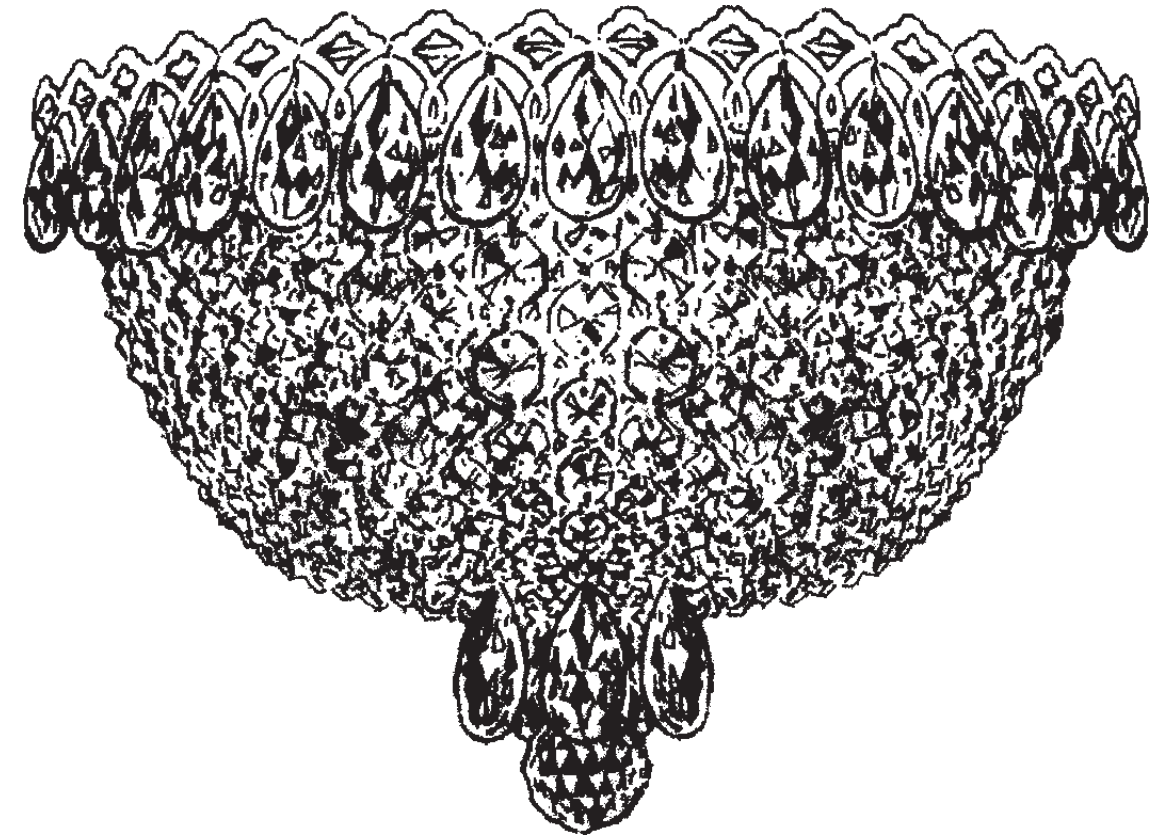




**SCHONBEK®**

**CAMELOT 2610- \_ \_**



**T**HIS DESIGN IS THE PROPRIETARY TRADE DRESS/TRADEMARK OF SWAROVSKILIGHTING, LTD.

2 Lights  
Diameter: 11-1/2"  
Body Length: 7-1/2"  
Extension: 5-1/2"  
Hanging Weight: 4 lbs.

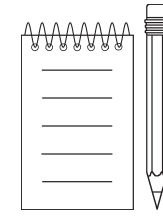
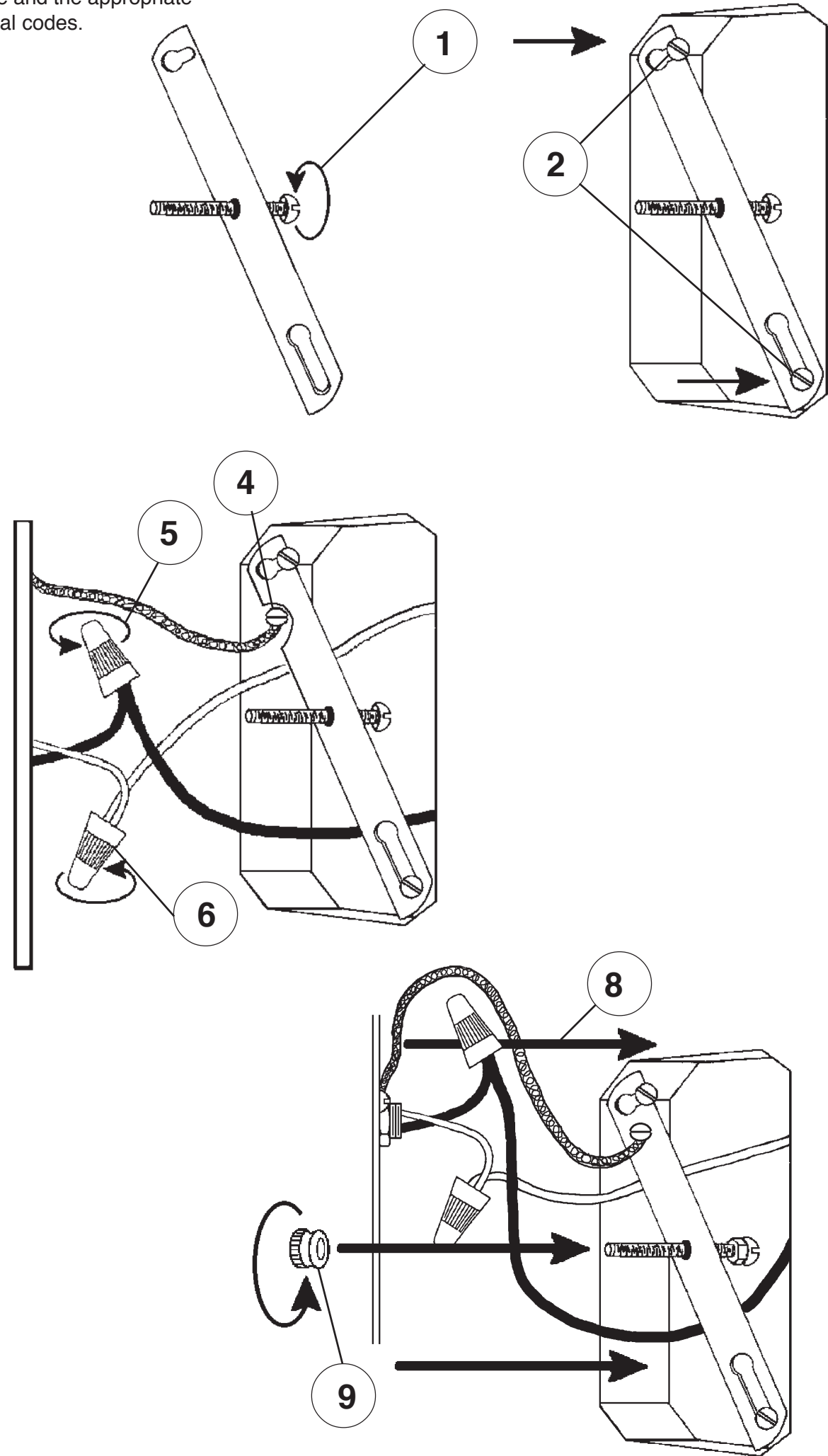


**SCHONBEK®**

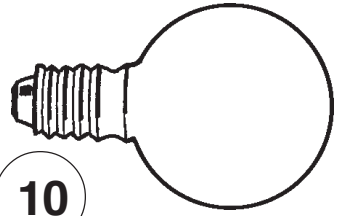
MAX <b>40</b> W		110-120 V						

SCHONBEK® is a member of the Swarovski group.

All electrical components must be installed by a licensed electrician in accordance with the National Electric Code and the appropriate local electrical codes.





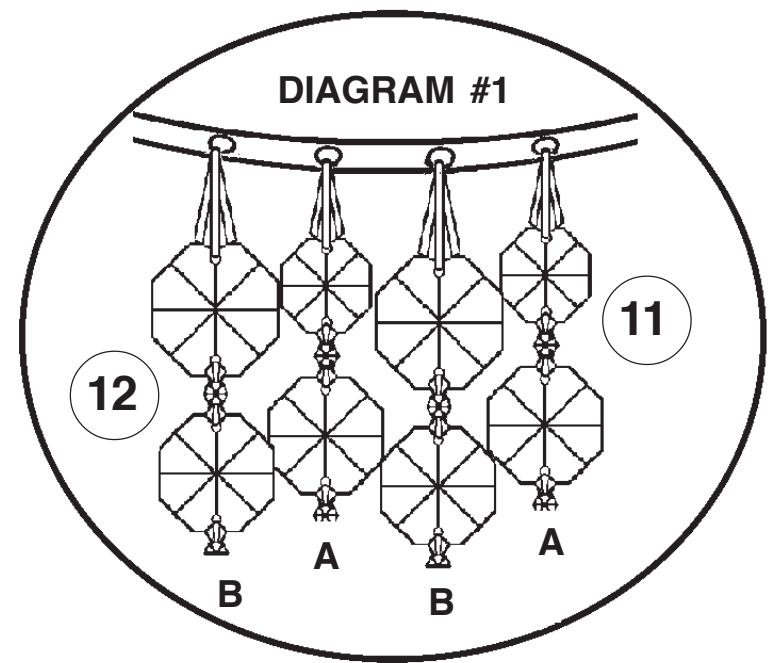
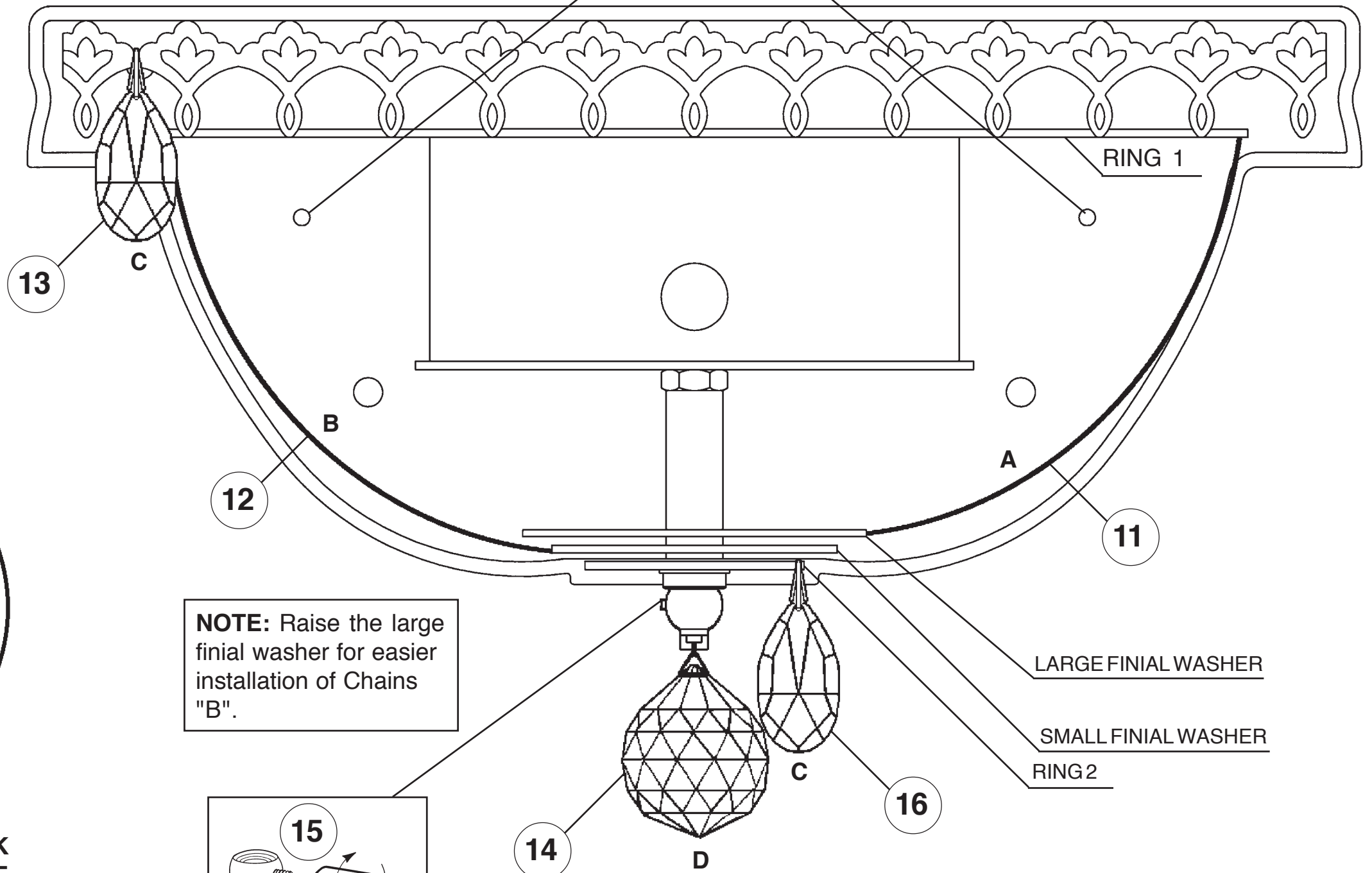


10

You will need 2 - G16-1/2  
25 Watts Recommended  
40 Watts Max

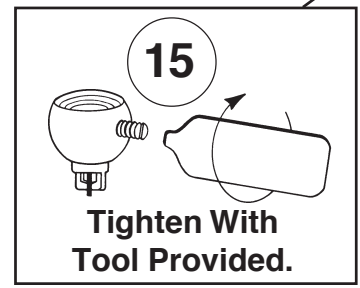
Install bulbs and be sure  
to test fixture BEFORE  
trimming.

INSTALL (2) WOOD  
SCREWS TO PREVENT  
WALL BRACKET FROM  
PIVOTING.



**NOTE:** Raise the large  
finial washer for easier  
installation of Chains  
"B".

**NOTE:** SKIP FIRST HOLE AND HOOK  
CHAINS "A" INTO SECOND HOLE OF  
RING #1 NEXT TO THE WALL.  
Larger jewels at top and graduates to  
smaller jewels toward bottom of chain.



15

Tighten With  
Tool Provided.

LARGE FINIAL WASHER

SMALL FINIAL WASHER

RING 2

