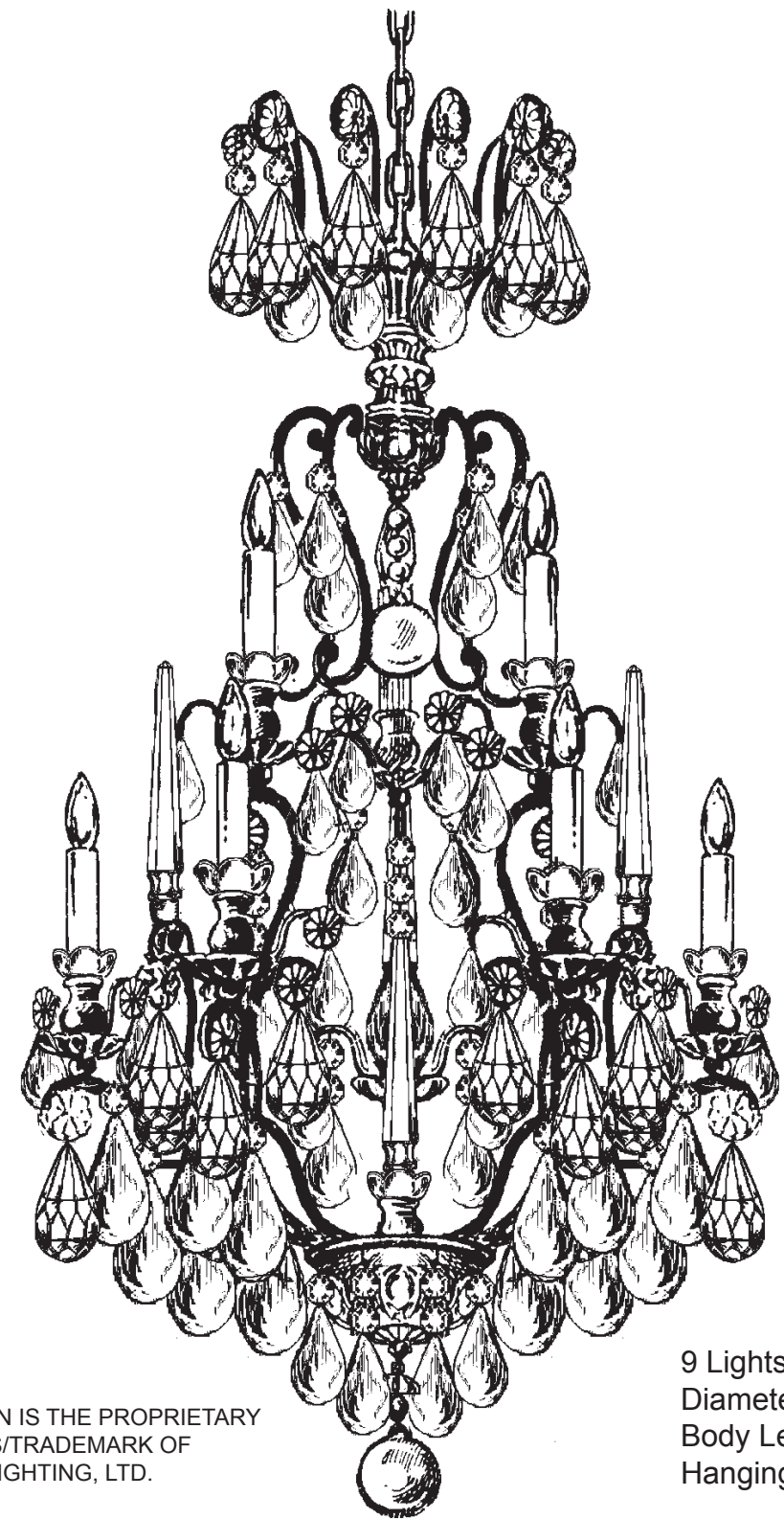


# SCHONBEK®

## CHANDELIER 2480-\_\_\_\_ TRIM DIAGRAM

(Finish Option)



THIS DESIGN IS THE PROPRIETARY TRADE DRESS/TRADemark OF SWAROVSKI LIGHTING, LTD.

9 Lights  
Diameter: 21"  
Body Length: 38"  
Hanging Weight: 30 lbs.

# SCHONBEK®

**Follow steps in exact order  
Save this trim diagram for future reference**

**1**

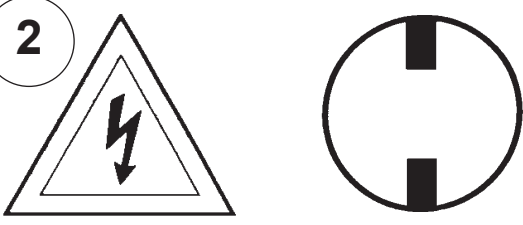
### IMPORTANT

*Person who opens carton should record the following information for future service.*

CODE # \_\_\_\_\_ Four-digit number on outside of carton.  
PACKER # \_\_\_\_\_ See crystal package label.  
ORDER # \_\_\_\_\_ See crystal package label.

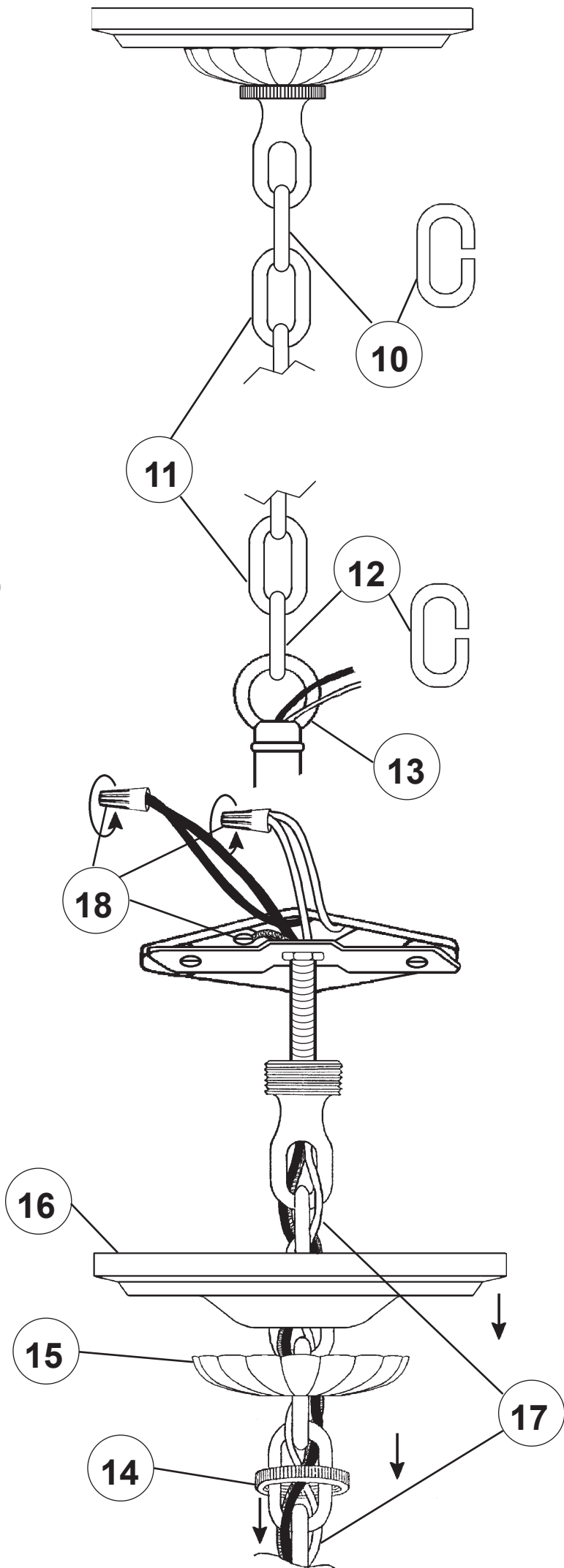
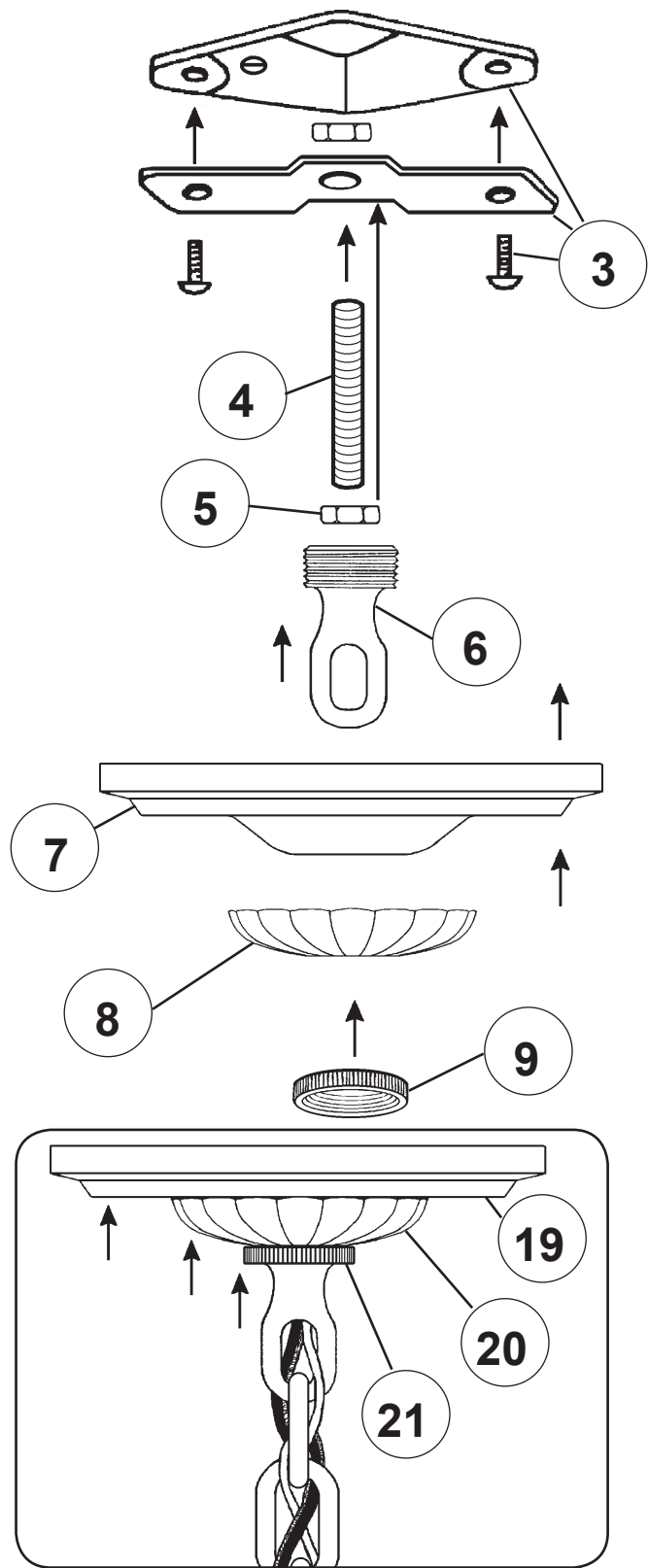
**Instructions for electrician**  
**STEPS 2 - 21**

**WARNING:**

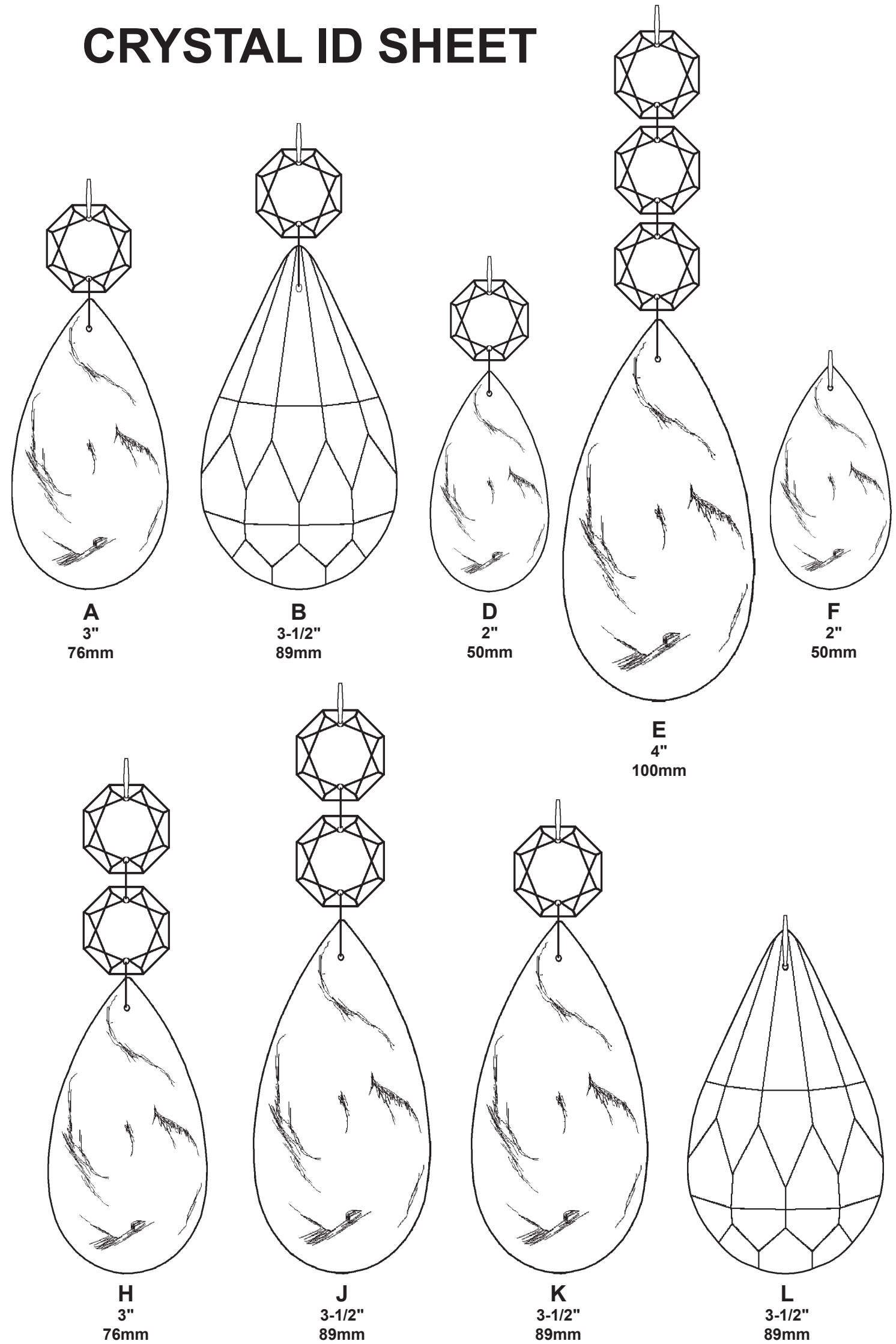
**2** 

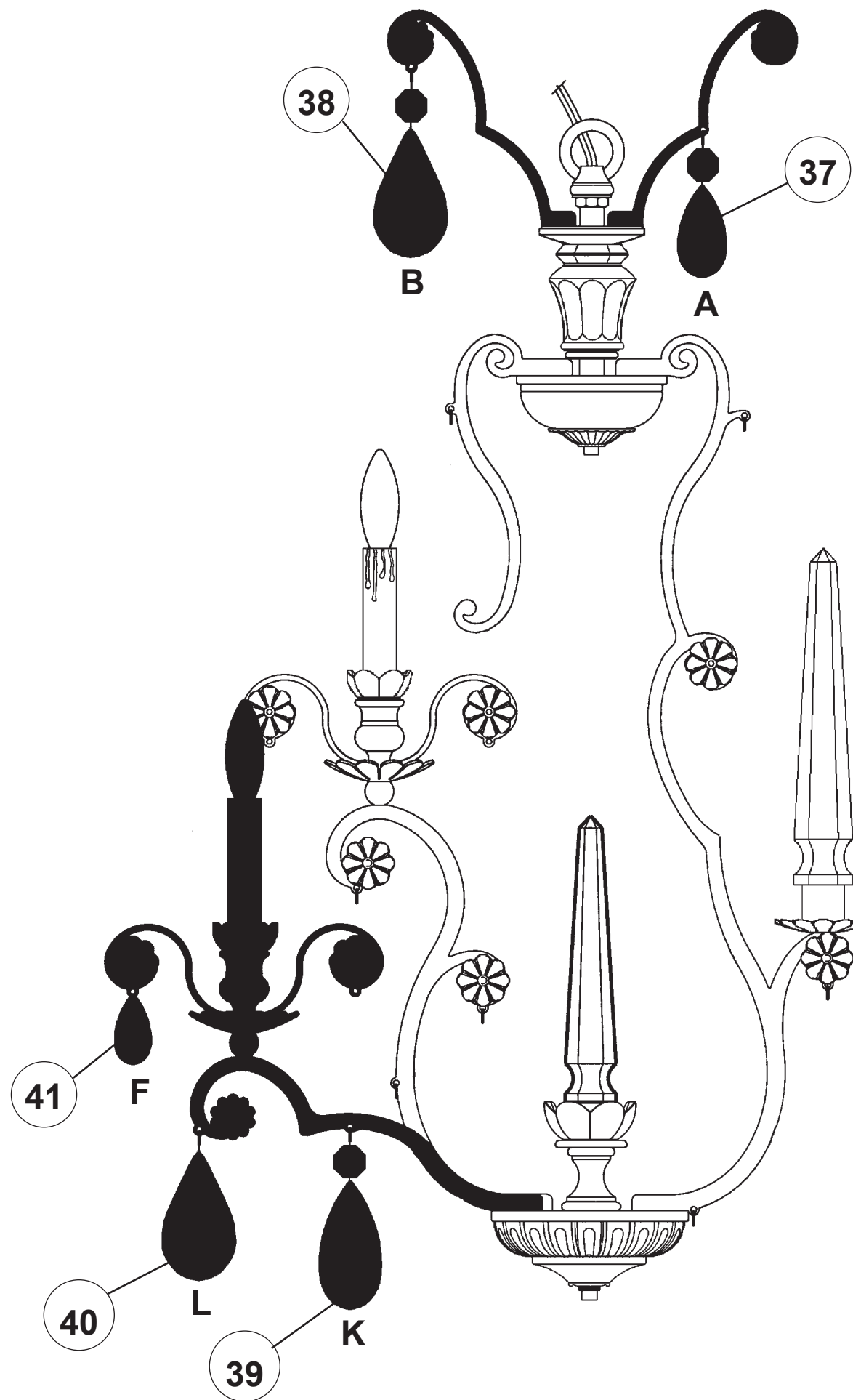
**Electrical Danger Turn Power Off**

All electrical components must be installed by a licensed electrician in accordance with the National Electric Code and the appropriate local electrical codes.

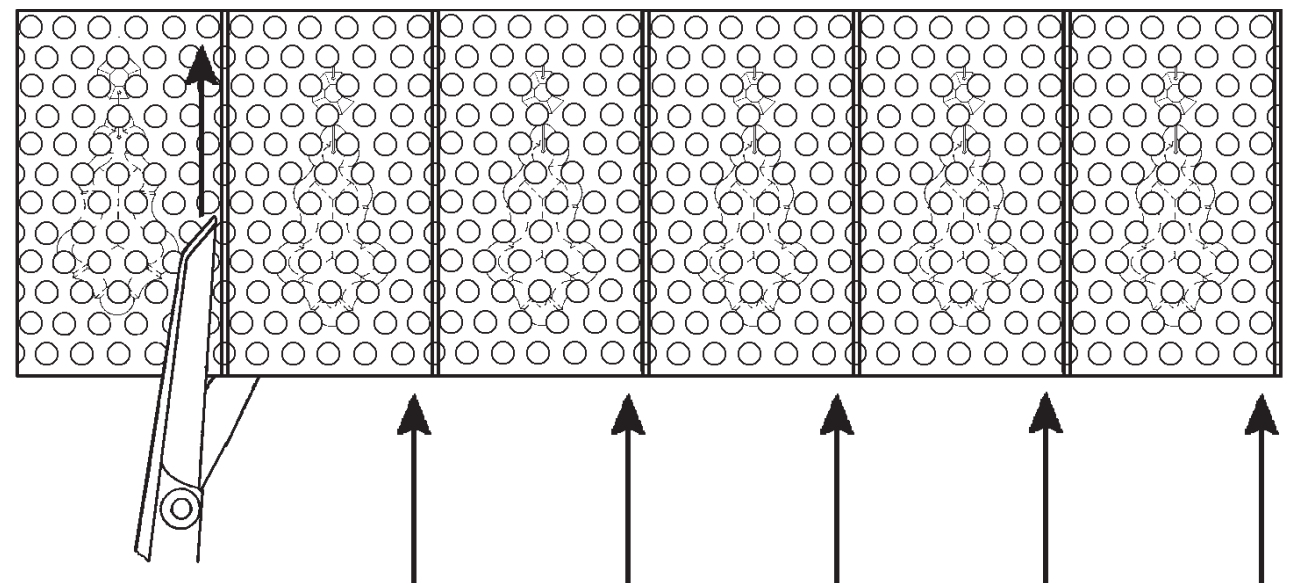


**CRYSTAL ID SHEET**



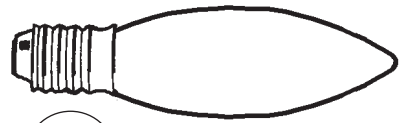


For easy removal of crystal from bubble pack, please cut along pouches on the inside of the seam. Gently remove crystal from the side of the pouch.



**NOTE:** Work on one crystal set at a time. Follow the black line from top to bottom according to the numbered steps on the trim diagram.

**Instructions for crystal trimming**  
**STEPS 22 - 41**



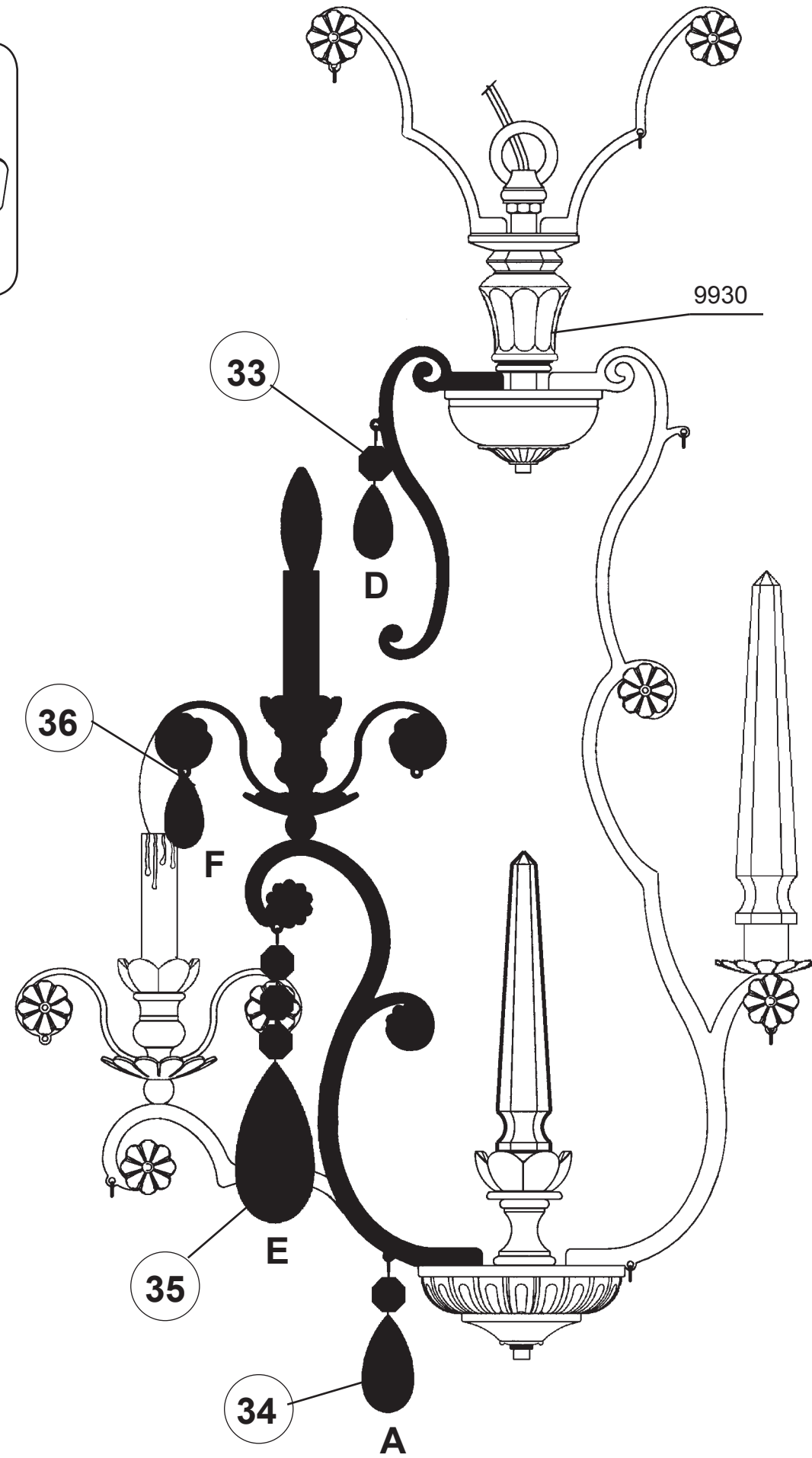
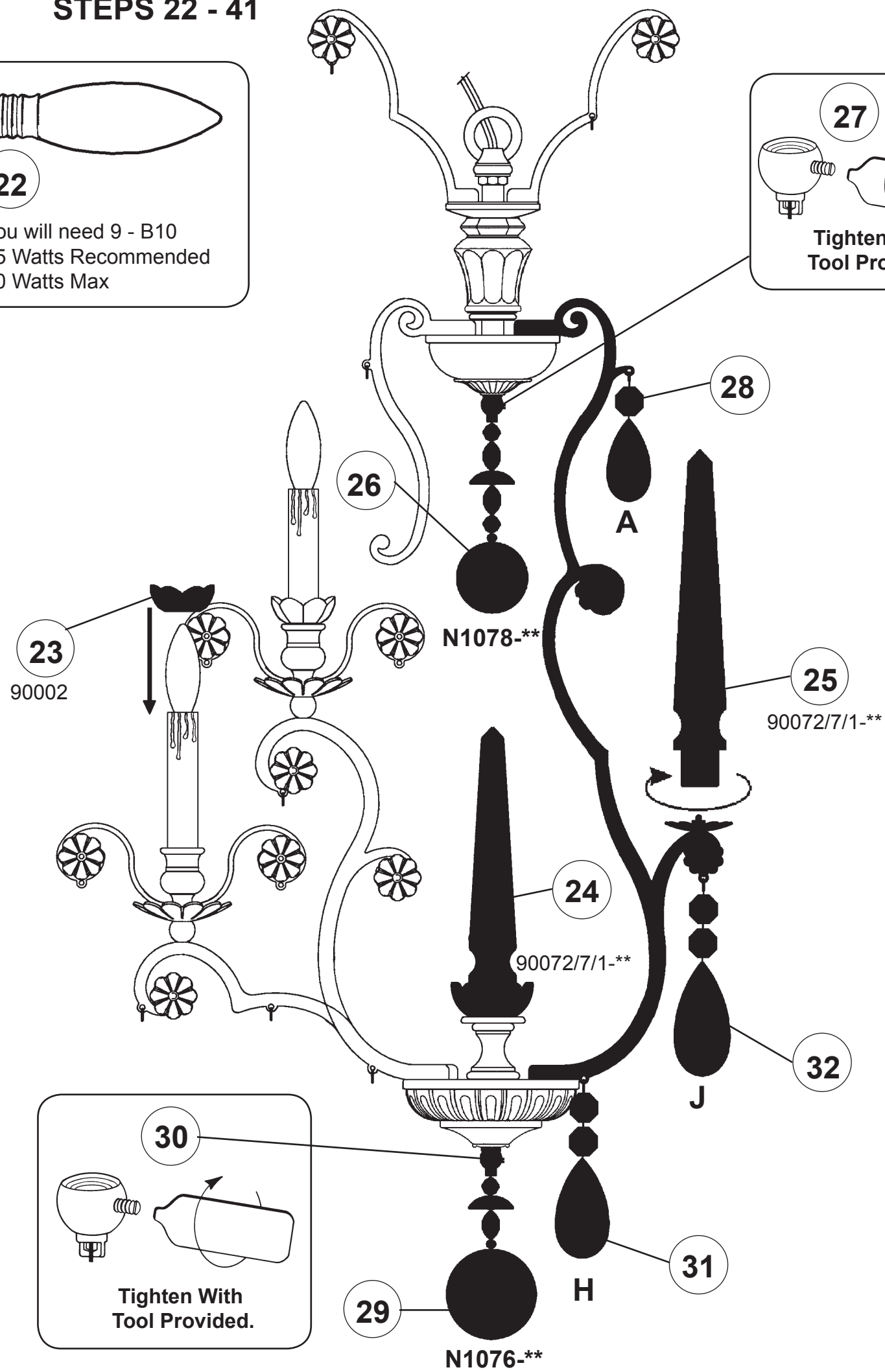
**22**

You will need 9 - B10  
 25 Watts Recommended  
 60 Watts Max



**27**

Tighten With  
 Tool Provided.



**SPARE PARTS KIT  
 PROVIDED.**