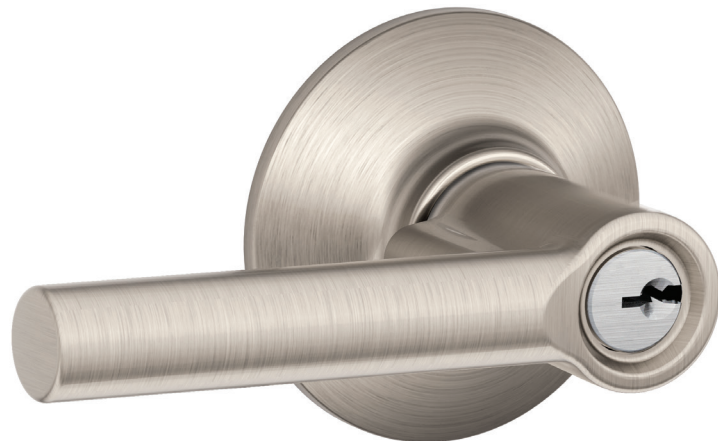
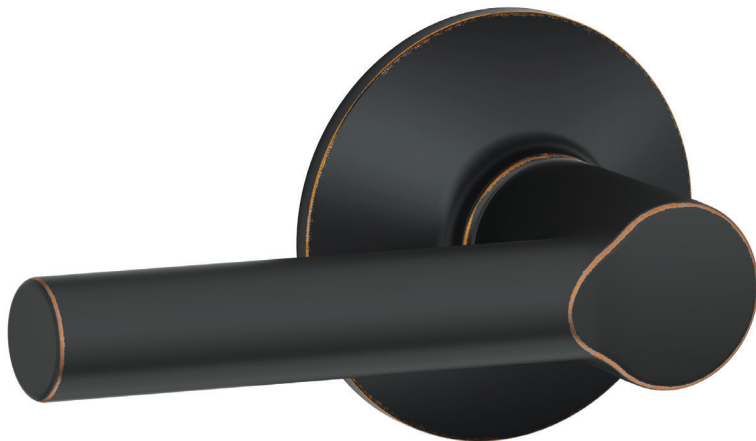




STRONG HAS A NAME.™



THEY OPEN EYES. AND DOORS.

# BROADWAY LEVER

From timeless elegance to striking modernity, our levers fit and accentuate virtually any décor. Naturally, they're also designed, crafted and tested to ensure durability.

- Grade 2 Higher Residential Security Rating
- Highest residential security for a lever product
- Lifetime finish and mechanical guarantee
- Guaranteed to fit on existing, standard pre-drilled doors
- Transitional design with a simple and sleek form to pair with both contemporary and modern styles



**Strong has a name.** It's who we are; it's what we do. And for more than 90 years, Schlage has brought uncommon strength to everything we design, build and test to keep you safe, sound and secure.

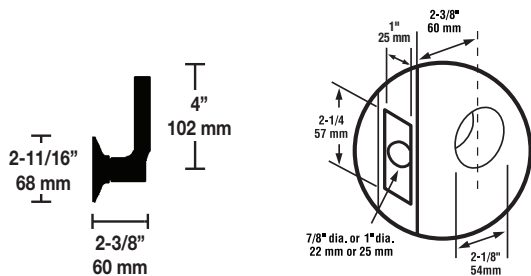
[schlage.com](https://www.schlage.com)



## F-SERIES LEVER SPECIFICATIONS

CERTIFICATION	ANSI/BHMA A156.2 Grade 2; available UL listed for 3-hour fire door
FINISH WARRANTY	Limited lifetime finish warranty*
MECHANICAL WARRANTY	Limited lifetime mechanical warranty
LATCH THROW	1/2"
CYLINDER	5-pin tumbler, C Keyway
DOOR THICKNESS	1 3/8" to 1 3/4"
CROSS BORE	2 1/8"
EDGE BORE	7/8"
LATCH / BACKSET	Universal latch fits 2 3/8" or 2 3/4" backset
LATCH FACEPLATE SIZE	1" x 2 1/4"
LATCH FACEPLATE OPTIONS	Round corner, square corner, drive-in, or Triple Option™
KEYS	2 per lock
DOOR HANDING	Symmetrical design for right or left handed doors
STRIKE	1 5/8" x 2 1/4" full lip
STRIKE OPTIONS	Specify round corner or square corner. Other options available
ADA COMPLIANT	Complies with ADA accessibility guidelines
FUNCTIONS	Passage, privacy, entry, storeroom and dummy

All finishes excluding Oil Rubbed Bronze (613), which is intended to patina and change over time



## AVAILABLE FINISHES



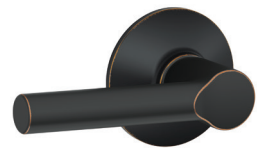
**619**  
Satin Nickel



**625**  
Bright Chrome



**626**  
Satin Chrome



**716**  
Aged Bronze

**DECORATIVE COLLECTIONS:** Featuring seven inspired designs, ranging from traditional to contemporary, the decorative collections coordinate with your Schlage handlesets.



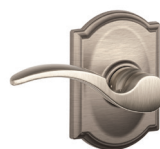
ADDISON



ANDOVER\*



BROOKSHIRE



CAMELOT



CENTURY



WAKEFIELD



GREENWICH\*\*

\* Andover features concealed screws

\*\* Greenwich will be available to order Summer 2013

