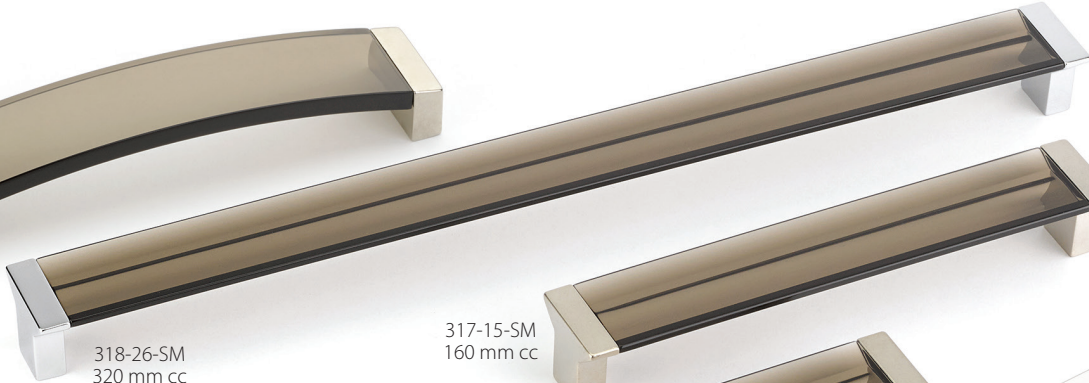


POSITANO

MADE IN



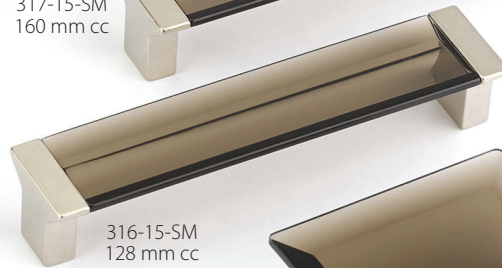
321-15-SM
160 mm cc



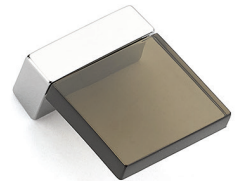
318-26-SM
320 mm cc



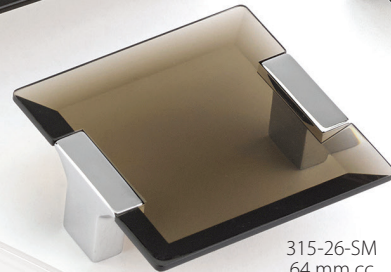
317-15-SM
160 mm cc



316-15-SM
128 mm cc



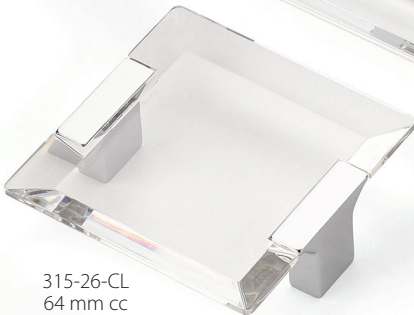
319-26-SM
16 mm cc



315-26-SM
64 mm cc



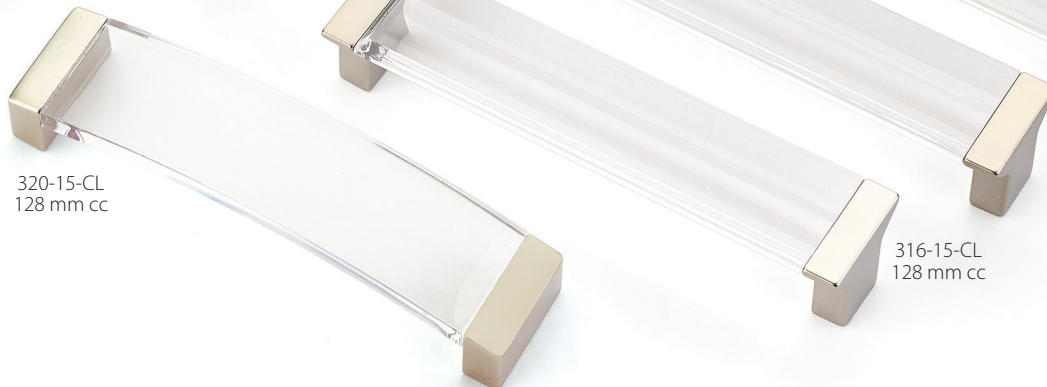
322-26-CL
224 mm cc



315-26-CL
64 mm cc



318-26-CL
320 mm cc



317-15-CL
160 mm cc



320-15-CL
128 mm cc

316-15-CL
128 mm cc

15-CL-Satin Nickel Clear • 15-SM-Satin Nickel Smoke
26-CL-Polished Chrome Clear • 26-SM-Polished Chrome Smoke

Items in this design group are not intended for use as appliance pulls.

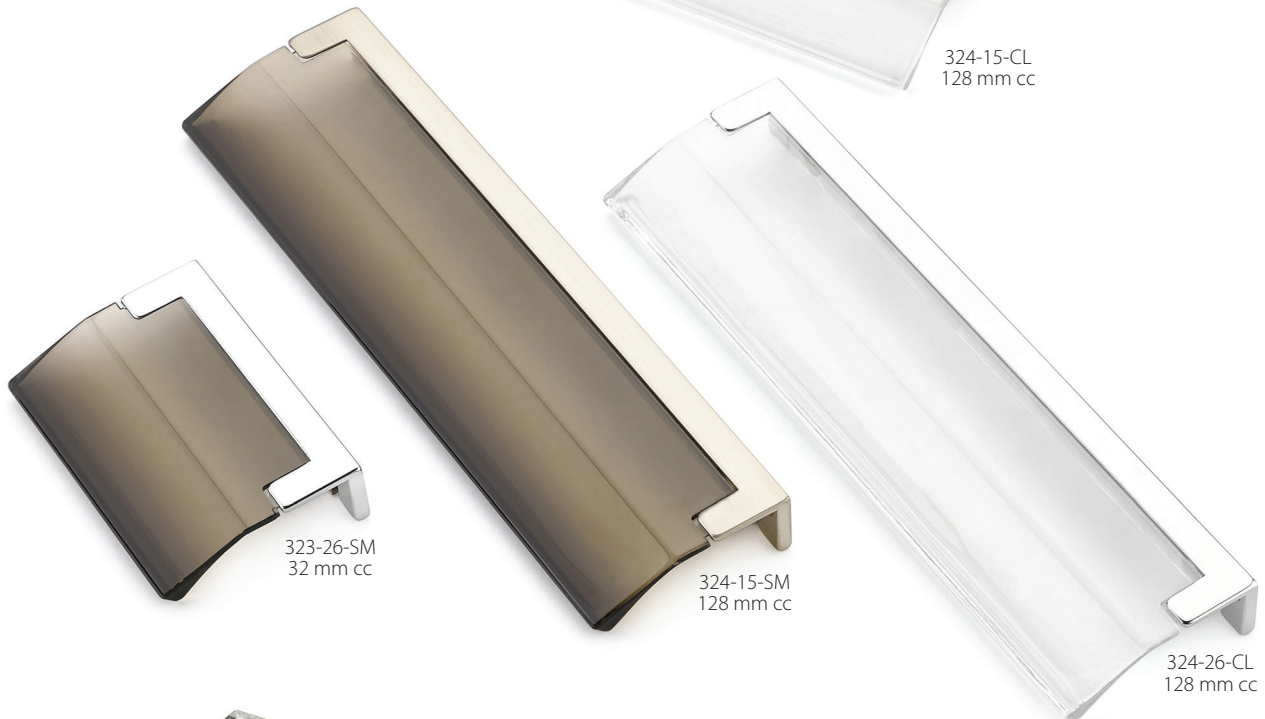
POSITANO

MADE IN
ITALY



324-26-SM
128 mm cc

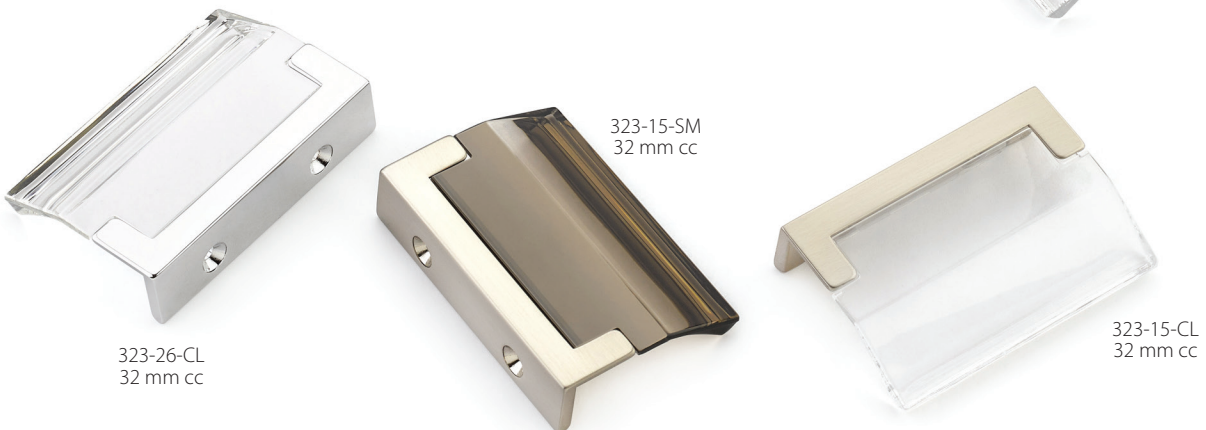
324-15-CL
128 mm cc



323-26-SM
32 mm cc

324-15-SM
128 mm cc

324-26-CL
128 mm cc

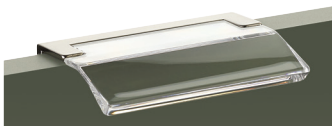


323-26-CL
32 mm cc

323-15-SM
32 mm cc

323-15-CL
32 mm cc

15-CL-Satin Nickel Clear • 15-SM-Satin Nickel Smoke
26-CL-Polished Chrome Clear • 26-SM-Polished Chrome Smoke



We recommend Positano edge pulls be installed on flat panel cabinets with a maximum thickness of 3/4" in order to achieve proper clearance. Edge pulls attach from inside drawer or cabinet face.