

A large, artistic photograph of a white microfiber filter, showing its intricate, tangled fibers. The filter is set against a dark background, creating a high-contrast, ethereal effect. The fibers are dense and appear to be in motion, with some parts in sharp focus and others blurred, giving a sense of depth and texture.

Microfiber filter

User manual

FT-MF

Safety information contains important information to keep the user safe and prevent property damage that may occur due to improper installation or misuse of the product. Read the safety information thoroughly before use.

SAMSUNG



Contents

Safety information	3
What you need to know about the safety instructions	3
Important safety symbols	3
Important safety precautions	4
CALIFORNIA PROPOSITION 65 WARNING	4
Critical electrical warnings	5
Critical installation warnings	5
Critical usage warnings	6
Critical cleaning warnings	6
Regulatory notice	7
FCC Notice	7
IC Notice	8
Installation	9
What's included	9
Installation requirements	11
Installing the Microfiber filter	12
Connecting the hoses	14
Operations	16
Buttons and indicators	16
SmartThings	18
Maintenance	19
Cleaning the mesh filter	19
Defrosting the Microfiber filter	20
Troubleshooting	21
Checkpoints	21
Appendixes	23
Specification sheet	23





Safety information

Congratulations on your new Samsung Microfiber filter. This manual contains important information on the installation, use and care of your Microfiber filter. Please take some time to read this manual to take full advantage of your Microfiber filter's many benefits and features.

What you need to know about the safety instructions

Please read this manual thoroughly to ensure that you know how to safely and efficiently operate the extensive features and functions of your new Microfiber filter. Please store the manual in a safe location close to the Microfiber filter for future reference. Use the Microfiber filter only for its intended purpose as described in this instruction manual.

Warnings and Important Safety Instructions in this manual do not cover all possible conditions and situations that may occur. It is your responsibility to use common sense, caution and care when installing, maintaining and operating your Microfiber filter.

Because the following operating instructions cover various models, the characteristics of your Microfiber filter may differ slightly from those described in this manual and not all warning signs may be applicable. If you have any questions or concerns, contact your nearest service center or find help and information online at www.samsung.com.

Important safety symbols

What the icons and signs in this user manual mean:

WARNING

Hazards or unsafe practices that may result in **severe personal injury, death and/or property damage.**

CAUTION

Hazards or unsafe practices that may result in **personal injury and/or property damage.**

NOTE

Indicates that a risk of personal injury or material damage exists.

Read the instructions

These warning signs are here to prevent injury to yourself and others.

Please follow them explicitly.

After reading this manual, store it in a safe place for future reference.

Read all instructions before using the Microfiber filter.

As with any equipment that uses electricity and moving parts, potential hazards exist. To safely operate the Microfiber filter, familiarize yourself with its operation and exercise care when using it.

SAVE THESE INSTRUCTIONS



Safety information

Important safety precautions

WARNING

To reduce the risk of fire, electric shock, or injury to persons when using your appliance, follow basic precautions, including the following:

1. Read all instructions before using the appliance.
2. Do not wash or dry articles that have been previously cleaned in, washed in, soaked in, or spotted with gasoline, dry-cleaning solvents, oils, other flammable or explosive substances as they give off vapors that could ignite or explode.
3. Do not allow children to play on or in the appliance. Close supervision of children is necessary when the appliance is used near children.
4. Before the appliance is removed from service or discarded, remove the door to the washing or drying compartment.
5. Do not reach into the appliance if the drum is moving.
6. Do not install or store this appliance where it will be exposed to weather, including wind, rain, or snow.
7. Do not tamper with controls.
8. Do not repair or replace any part of the appliance or attempt any servicing unless specifically recommended in the user-maintenance instructions or in published user repair instructions that you understand and have the skills and are qualified to carry out.
9. Do not add gasoline, dry-cleaning solvents, or other flammable or explosive substances to the wash water. These substances give off vapors that could ignite or explode.
10. Under certain conditions, hydrogen gas may be produced in a hot water system that has not been used for 2 weeks or more. HYDROGEN GAS IS EXPLOSIVE. If the hot water system has not been used for such a period, before using a washer or combination washer-dryer, turn on all hot water faucets and let the water flow from each for several minutes. This will release any accumulated hydrogen gas. As the gas is flammable, do not smoke or use an open flame during this time.

CALIFORNIA PROPOSITION 65 WARNING

WARNING

Cancer and Reproductive Harm - www.P65Warnings.ca.gov.

SAVE THESE INSTRUCTIONS

Critical electrical warnings

WARNING

Plug the power cord into a wall socket that meets local electrical specifications. Use the socket for this appliance only, and do not use an extension cord. If you plug the power cord into a power strip, make sure the power strip specification is 120 V / 16 A / 3600 W or higher.

- Ensure that the power voltage, frequency, and current are the same as those of the product specifications. Failure to do so may result in electric shock or fire.

Do not pull the power cord when unplugging the power plug. Unplug the power plug by holding the plug.

Remove all foreign substances such as dust or water from the power plug terminals and contact points using a dry cloth on a regular basis.

Plug the power plug into the wall socket so that the cord is running towards the floor. If you plug the power plug into the socket in the opposite direction, the electric wires within the cable may be damaged and this may result in electric shock or fire.

Do not pull or excessively bend the power cord. Do not twist or tie the power cord. Do not hook the power cord over a metal object, place a heavy object on the power cord, insert the power cord between objects, or push the power cord into the space behind the Microfiber filter.

Plug the power plug into the wall socket firmly. Do not use a damaged power plug, damaged power cord, or loose wall socket.

Unplug the power cord when the Microfiber filter is not being used for long periods of time or during a thunder or lightning storm.

Do not touch the power plug with wet hands.

Before cleaning or performing maintenance, unplug the Microfiber filter from the wall socket.

Unplug the power plug before disassembling or repairing the product.

Critical installation warnings

WARNING

Install the Microfiber filter on a solid and flat wall.

Do not install the Microfiber filter in a bathroom, in a location exposed to the elements, or splashing water.

Do not install the Microfiber filter near a heater or an flammable material, in a humid, oily, or dusty place, in a place exposed to direct sunlight and water, in a place where you might put a candle or mosquito repellent incense on the Microfiber filter, in a place where there is a risk of gas leak.

SAVE THESE INSTRUCTIONS



Safety information

Critical usage warnings

WARNING

The Microfiber filter is designed to capture micro plastic fibers released from clothes during washing and must not be used for other purposes.

Do not attempt to repair, disassemble, or modify the Microfiber filter yourself. Do not use a fuse (such as copper, steel wire, etc.) other than a standard fuse.

- When the Microfiber filter needs to be repaired or reinstalled, contact your nearest service center.
- This may result in electric shock, fire, problems with the Microfiber filter, or injury.

To avoid the risk of electric shock and fire, plug the power plug into the wall socket firmly. Do not use a damaged power plug, damaged power cord, or loose wall socket. Unplug the power plug when the Microfiber filter is not being used for long periods of time or during a thunder or lightning storm.

- Do not install the Microfiber filter in a RVs (recreational vehicles), ships, airplanes.

Keep the Microfiber filter away from children or pets.

Unplug the power plug when the Microfiber filter is not operating.

Do not press the buttons using sharp objects such as pins, knives, fingernails, etc.

- This may result in electric shock or injury.

If the Microfiber filter generates a strange noise, a burning smell, or smoke, unplug the power cord immediately and contact your nearest service center.

Do not remove the mesh filter while the Microfiber filter is operating. Water may overflow.

Critical cleaning warnings

WARNING

When the Microfiber filter is contaminated by a foreign substance such as detergent, dirt, food waste, etc., unplug the power plug and clean the Microfiber filter using a damp, soft cloth.

- Do not clean the Microfiber filter by spraying water directly onto it. Do not use benzene, thinner, or alcohol, to clean the Microfiber filter. Do not use a strong acidic cleaning agent.
- It may cause discoloration, deformation, product damage, rusting, electric shock, or fire.

Before cleaning or performing maintenance, unplug the Microfiber filter from the wall socket.

- This may result in electric shock or fire.

SAVE THESE INSTRUCTIONS



Regulatory notice

You may find the Open Source Announce information in the User Manual registered in the Samsung website.

FCC Notice

CAUTION

Any changes or modifications not expressly approved by the party responsible for compliance could void the user's authority to operate the equipment.

This device complies with Part 15 of FCC Rules. Operation is Subject to following two conditions:

1. This device may not cause harmful interference, and
2. This device must accept any interference received including interference that cause undesired operation.

For products sold in the US and Canadian markets, only channels 1–11 are available. You cannot select any other channels.

FCC STATEMENT:

This equipment has been tested and found to comply within the limits for a Class B digital device, pursuant to part 15 of the FCC Rules. These limits are designed to provide reasonable protection against harmful interference in a residential installation.

This equipment generates, uses, and can radiate radio frequency energy and, if not installed and used in accordance with the instructions, may cause harmful interference to radio communications. However, there is no guarantee that interference will not occur in a particular installation. If this equipment does cause harmful interference to radio or television reception, which can be determined by turning the equipment off and on, the user is encouraged to try to correct the interference by one or more of the following measures:

- Reorienting or relocating the receiving antenna
- Increasing the separation between the equipment and receiver
- Connecting the equipment to an outlet that is on a different circuit than the radio or TV.
- Consulting the dealer or an experienced radio/TV technician for help.

FCC RADIATION EXPOSURE STATEMENT:

This equipment complies with FCC radiation exposure limits set forth for an uncontrolled environment. This equipment should be installed and operated so there is at least 8 inches (20 cm) between the radiator and your body. This device and its antenna(s) must not be colocated or operated in conjunction with any other antenna or transmitter.

SAVE THESE INSTRUCTIONS



Regulatory notice

IC Notice

The term “IC” before the radio certification number only signifies that Industry Canada technical specifications were met. Operation is subject to the following two conditions:

1. This device may not cause interference, and
2. This device must accept any interference, including interference that may cause undesired operation of the device.

This Class B digital apparatus complies with Canadian ICES-003.

Cet appareil numérique de la classe B est conforme à la norme NMB-003 du Canada.

For products sold in the US and Canadian markets, only channels 1–11 are available. You cannot select any other channels.

IC RADIATION EXPOSURE STATEMENT:

This equipment complies with IC RSS-102 radiation exposure limits set forth for an uncontrolled environment. This equipment should be installed and operated so there is at least 8 inches (20 cm) between the radiator and your body. This device and its antenna(s) must not be colocated or operated in conjunction with any other antenna or transmitter.



SAVE THESE INSTRUCTIONS



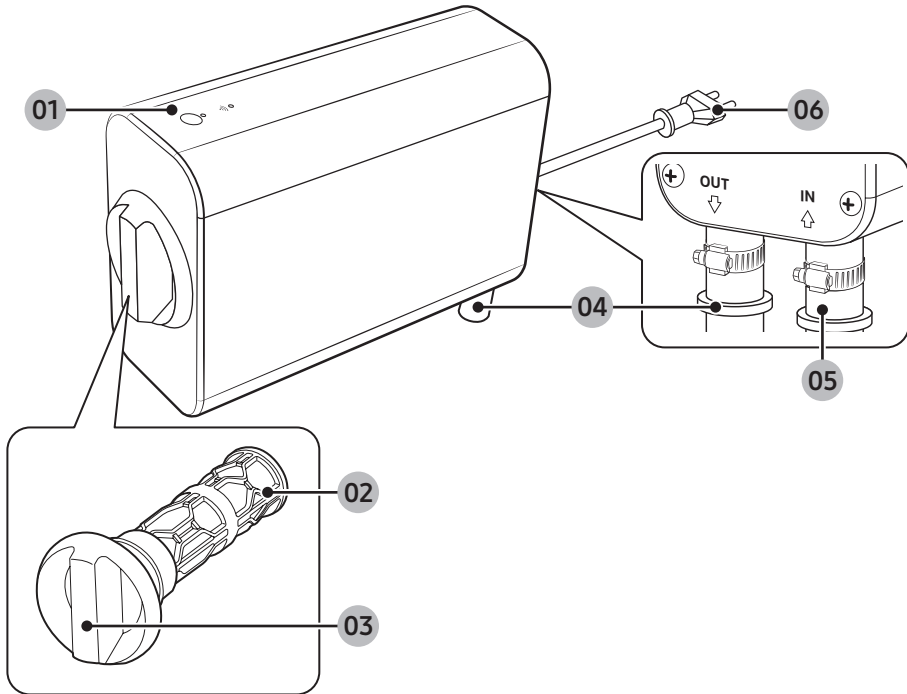
Installation

NOTE

- Remove the product packaging and check if there is any missing accessory.
- Packaging materials can be dangerous to children. Dispose all packaging material (plastic bags, polystyrene, etc.) out of children's reach.

What's included

Make sure all the parts are included in the product package. If you have a problem with the Microfiber filter or the parts, contact a local Samsung customer center or the retailer.



01 Buttons and indicators

02 Mesh filter

03 Mesh filter handle

04 Water outlet port (OUT)

05 Water inlet port (IN)

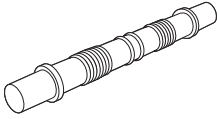
06 Power plug

* The design of the filter and/or hose differs with the model.

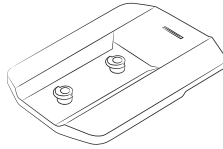
Installation

English

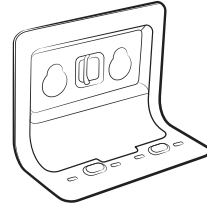
Accessories



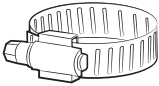
Drain hose



Cradle



Bracket



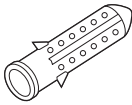
Hose clamp



Anti-slip pad



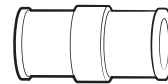
Long screw



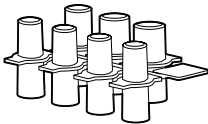
Anchor bolt



Short screw



Hose connector



Adaptor

Installation requirements

The Microfiber filter is optimized for Samsung household washing machines. If you are using a third-party washing machine, check the filter's specification and the washing machine's hose specification.

Location

- Away from direct sunlight
- Adequate room for ventilation
- The ambient temperature is always higher than the freezing point (0 °C)
- Away from a heat source

CAUTION

Do not install the Microfiber filter in areas where water may freeze. If the water remaining in the Microfiber filter freezes, it may cause damage to the Microfiber filter.

Electrical connection

- Install the Microfiber filter in a location near a wall socket to plug the power cord.
- Do not use an extension cord.

WARNING

- Use only the power cord that comes with the Microfiber filter.
- Do not modify the provided plug. If it does not fit the outlet, call a qualified electrician to install a suitable outlet.

Hose connection

Install the product in a location where you can connect your Samsung washing machine's drain hose to the Microfiber filter, and the drain hose to the drain system at the same time.

To reduce the risk of leaks:

- Use the provided hose clamps to firmly fix the hoses connected to the water inlet (IN) and outlet (OUT) ports.
- Regularly check the hose connections for leaks.

CAUTION

Before using the Microfiber filter for the first time, check all hose connections for leaks.

Wall (when mounted on a wall)

Install the Microfiber filter on a solid and flat wall. When installing the Microfiber filter on a wall, use a level and make sure it is level.

CAUTION

- Choose a wall where you can use the provided anchor bolt to fasten the bracket (such as a concrete or cement walls).
- If you install your Microfiber filter on a wall made of other kinds of material, use a proper anchor bolts and screws designed for that material.

Installation

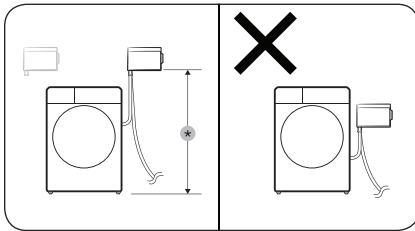
Installing the Microfiber filter

You must install the Microfiber filter in the upright position.

Installing on a wall

NOTE

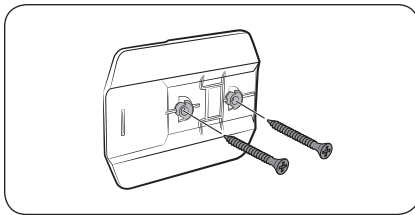
To install the Microfiber filter on a wall, you need a drill and a cross-head screwdriver. (Not provided)



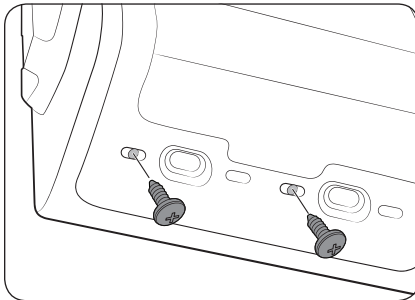
1. Decide where on the wall you want to install the Microfiber filter.
 - The minimum distance (*) from the floor to the bottom of the Microfiber filter must be 100 ± 5 cm.

CAUTION

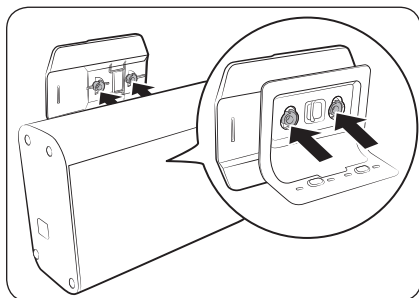
You must install the product higher than the washing machine, and the product's water outlet port (OUT) must point down.



2. Hold the cradle against the installation location and mark the spots where the screws will be fastened.
3. Drill holes in the spots you have marked in the previous step, and then insert the anchor bolts.
4. Attach the cradle to the wall with long screws.



5. Attach the bracket to the Microfiber filter. Use the short screws and fasten them at the bottom of the Microfiber filter.



- Align the holes on the bracket with the grooves on the cradle, and then mount the bracket.

⚠ CAUTION

- Be careful not to damage the Microfiber filter while attaching the bracket or mounting to the cradle.
- Make sure to check the Microfiber filter is securely fastened to the cradle

- Connect the hoses to the Microfiber filter according to the instructions in the **"Connecting the hoses"** section.

- Plug the power cord into a wall socket.

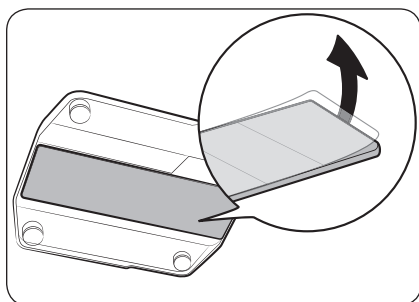
📖 NOTE

The power turns on and the Filter status indicator lights up when you plug the power cord into a wall socket.

Installing on a washing machine

📖 NOTE

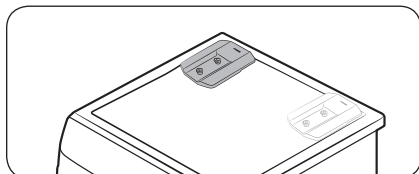
Before the installation, keep the top, sides, and rear of the washing machine clear of interfering objects.



- Remove the films on both sides of the anti-slip pad, and then attach the anti-slip pad to the bottom of the cradle.

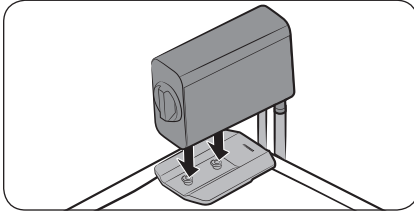
📖 NOTE

You must attach the smooth side of the anti-slip pad to the cradle.



- Attach the cradle on the rear-left or rear-right side of the washing machine's top surface.
- Connect the hoses to the Microfiber filter according to the instructions in the **"Connecting the hoses"** section.

Installation

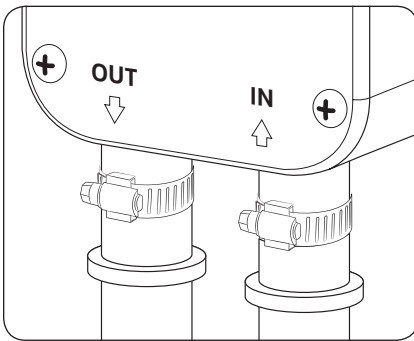


- Align the holes on the bottom of the Microfiber filter with the grooves on the cradle, and then mount the Microfiber filter.
- Plug the power cord into a wall socket.

NOTE

The power turns on and the Filter status indicator lights up when you plug the power cord into a wall socket.

Connecting the hoses



- Connect the washing machine's drain hose to the water inlet port (IN) of the Microfiber filter.

CAUTION

- Make sure the washing machine is off before connecting the washing machine's drain hose to the water inlet port (IN).
- Some water may remain in the washing machine's drain hose. Be careful when you connect it to the Microfiber filter.

- Connect the provided drain hose to the water outlet port (OUT).

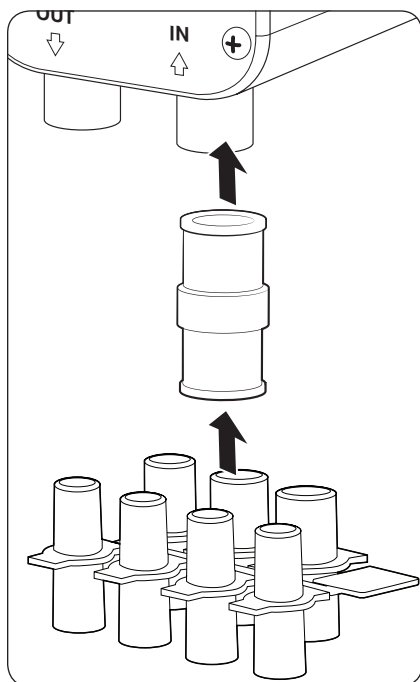
- Firmly fix the hoses with the provided hose clamps.

CAUTION

Do not stretch the drain hose by force. If the hose is too short, replace the hose with a longer, high-pressure hose.

Using the hose connector and adapter

If you cannot connect your washing machine's drain hose to the water inlet port (IN) because of the unmatching size, use the hose connector and adapter according to the following instruction.



1. Connect the hose connector to the water inlet port (IN).
2. Find the right-sized adapter for your washing machine's drain hose, and then connect it to the hose connector.
3. Firmly fix both ends of the hose connector with the provided hose clamps.
4. Connect your washing machine's drain hose to the adapter.
5. Operate the washing machine for one full cycle to check for water leaks.



Operations

English

⚠ WARNING

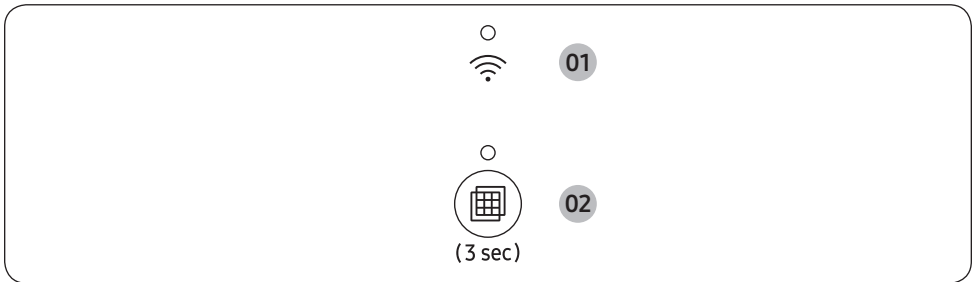
To reduce the risk of fire, electric shock, or injury to persons, read the Safety information before operating this appliance.

⚠ CAUTION

Do not remove the mesh filter while the Microfiber filter is operating.


Buttons and indicators

FT-MF



<p>01 Wi-Fi </p>	<p>The Wi-Fi indicator lights up when the Microfiber filter is connected to Wi-Fi.</p> <ul style="list-style-type: none"> • Press and hold the Filter Reset button for 7 seconds to turn on or off the Wi-Fi.
---	---



02 Filter status
indicator / Filter
Reset button 

The Filter status indicator lights up when the Microfiber filter is on.

- The power turns on when you plug the power cord into a wall socket.

⚠ CAUTION

Make sure to turn on the Microfiber filter before you operate your washing machine. If you operate the washing machine while the Microfiber filter is off, a drain error message may appear on your washing machine because the water cannot be drained properly through the Microfiber filter.

Press this button for 3 seconds to reset the status of the mesh filter after cleaning the mesh filter.

- Clean the mesh filter when the Filter status indicator icon blinks. (Refer to the “**Cleaning the mesh filter**” section on page 19.)

⚠ CAUTION

- Be careful when removing the mesh filter because there may be undrained water inside.
- If the Filter status indicator keeps blinking after resetting the filter, check if you have properly inserted the mesh filter.
- If your washing machine is experiencing a draining problem, turn it off and remove the filter.



Operations

SmartThings

Wi-Fi connection

On your smartphone or tablet, go to **Settings** and turn on the wireless connection and select an AP (Access Point).

- The Microfiber filter supports the Wi-Fi 2.4 GHz protocols.

Download

On an app market (Google Play Store, Apple App Store, Samsung Galaxy Apps), find the SmartThings app with a search term of "SmartThings". Download and install the app on your device.

NOTE

The app is subject to change without notice for improved performance.

Log in

You must first log into SmartThings with your Samsung account. To create a new Samsung account, follow the instructions on the app. You don't need a separate app to create your account.

NOTE

If you have a Samsung account, use the account to log in. A registered Samsung smartphone or tablet user automatically logs in.

To register your Microfiber filter to SmartThings

1. Make sure your smartphone or tablet is connected to a wireless network. If not, go to **Settings** and turn on the wireless connection and select an AP (Access Point).
2. Open **SmartThings** on your smartphone or tablet.
3. If a message of "A new device is found.," select **Add**.
4. If no message appears, select **+** and select your Microfiber filter in a list of devices available. If your Microfiber filter is not listed, select **Device Type** > **Specific Device Model**, and then add your Microfiber filter manually.
5. Register your Microfiber filter to the SmartThings app as follows.
 - a. Add your Microfiber filter to SmartThings. Make sure your Microfiber filter is connected to SmartThings.
 - b. When registration is complete, your Microfiber filter appears on your smartphone or tablet.



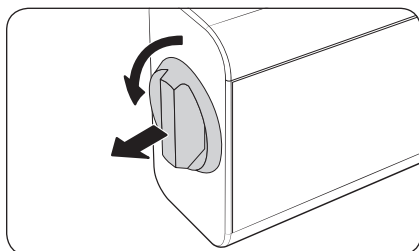
Maintenance

Cleaning the mesh filter

Clean the mesh filter when the Filter status indicator blinks.

⚠ CAUTION

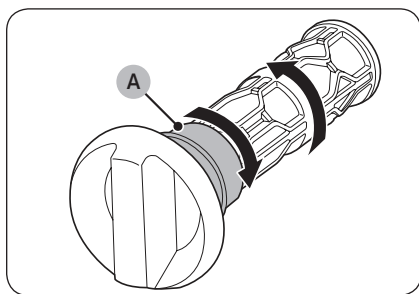
For the safety, turn off the Microfiber filter and the washing machine connected to it before removing the mesh filter.



1. Turn off the Microfiber filter and the washing machine connected to it.
2. Hold the mesh filter handle and turn it counterclockwise. Then, pull out to remove the mesh filter from the main unit.

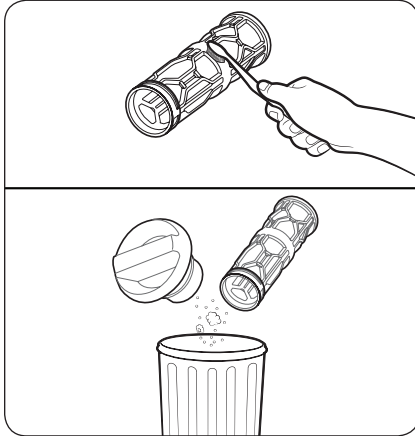
⚠ CAUTION

Be careful when removing the mesh filter because there may be undrained water inside.



3. Separate the mesh filter and the handle.
 - Hold the **part (A)** of the handle. Then turn the mesh filter in the direction of the arrow (as shown in the figure).

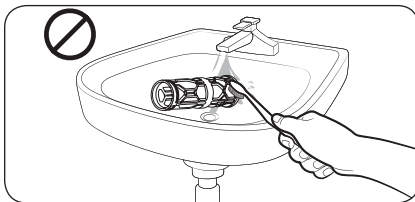
Maintenance



4. Clean the waste collected in the mesh filter using a soft brush.
 - Make sure to discard the collected waste into the waste bin.
5. Assemble the mesh filter and the handle.
6. Insert the cleaned mesh filter back into the main unit, and then turn it clockwise until the mark on the handle is pointing up.
7. Press and hold the **Filter Reset** button for 3 seconds to reset the status of the mesh filter.

⚠ CAUTION

- If the mesh filter is damaged, performance may degrade, or a drain error message may appear on your washing machine.
- If the Filter status indicator keeps blinking after resetting the filter, check if you have properly inserted the mesh filter.
- If the mesh filter is not inserted in the correct position, water may leak or performance may degrade. Furthermore, a drain error message may appear on your washing machine.



⚠ CAUTION

To continue using the Microfiber filter in an environmentally friendly way, avoid using water to clean the mesh filter. Instead, discard the collected waste in a waste bin.

Defrosting the Microfiber filter

Any water remaining inside the Microfiber filter may freeze when the temperature drops below 0 °C.

1. Turn off the Microfiber filter, and unplug the power cord.
2. Disconnect the two hoses connected to the Microfiber filter and soak them in warm water.
3. Detach the Microfiber filter from the cradle, and put it on a tray or a container. Then, move it to a warm place to defrost frozen water.
4. Mount the Microfiber filter onto the cradle, and connect the hoses back to it.

📖 NOTE

If the Microfiber filter still doesn't operate normally, repeat the above steps until it operates normally.

Troubleshooting

Checkpoints

⚠ CAUTION

Contact the service center if a problem persists, or if you encounter a problem that is not in this section.

Problem	Action
Does not operate.	<ul style="list-style-type: none">• Check if power is supplied properly.• Check and reset the circuit breaker.
Excessive vibration or makes noise.	<ul style="list-style-type: none">• Make sure the Microfiber filter is securely mounted on a solid wall.<ul style="list-style-type: none">- Use the provided accessories to securely fasten the cradle to the wall. Then, fasten the bracket to the Microfiber filter to mount the Microfiber filter to the cradle.• Make sure the Microfiber filter is not in contact with any other object.• The motor can cause noise during normal operation.
Does not drain.	<ul style="list-style-type: none">• Make sure the drain hose is straightened all the way to the drain system. If you encounter a drain problem, call for service.• Make sure the drain hose is not frozen or clogged.• Make sure the drain hose is connected to a drain system that is not clogged.• Make sure the hoses are properly connected to the water inlet (IN) and outlet (OUT) ports.• Make sure the drain hose is not kinked.• Clean the mesh filter.<ul style="list-style-type: none">- You must not remove the mesh filter while either the Microfiber filter or the washing machine connected to the Microfiber filter is operating. Before removing the mesh filter, turn off the Microfiber filter and the washing machine connected to it.• Check if there is a drain error on the washing machine connected to the Microfiber filter. Refer to the washing machine's user manual to resolve the drain error.
Leaks water.	<ul style="list-style-type: none">• Check if the mesh filter is inserted in the correct position.<ul style="list-style-type: none">- Turn off the Microfiber filter and the washing machine connected to it, and then remove the mesh filter. Insert the mesh filter back into the main unit, and then turn it clockwise until the mark on the handle is pointing up.• Make sure all hose connections are tight.• Make sure the end of the drain hose is correctly inserted and secured to the drain system.• Check the drain hose.<ul style="list-style-type: none">- Make sure the end of the drain hose is not placed on the floor.- Make sure the drain hose is not frozen or clogged.

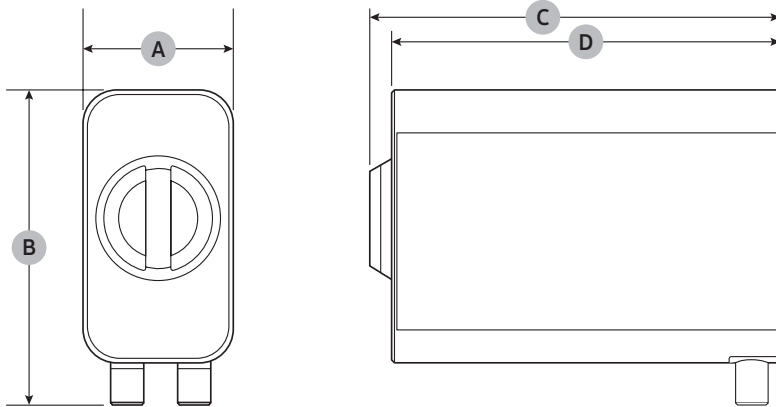
Troubleshooting

Problem	Action
The Filter status indicator is not turning off.	<ul style="list-style-type: none">• Press and hold the Filter Reset button for 3 seconds to reset the status of the mesh filter.• Clean the mesh filter.<ul style="list-style-type: none">- The Filter status indicator lights up after every 30 cycles (of washing machine) or every month, whichever comes first. Clean the mesh filter regularly for the best performance.• Check if the mesh filter is inserted in the correct position.<ul style="list-style-type: none">- Turn off the Microfiber filter and the washing machine connected to it, and then remove the mesh filter. Insert the mesh filter back into the main unit, and then turn it clockwise until the mark on the handle is pointing up. Then, press the Filter Reset button to reset the status of the mesh filter.
The Filter status and the Wi-Fi indicators are blinking simultaneously.	<ul style="list-style-type: none">• Check if the product is installed according to the installation guide.• Unmount the product from the wall or the washing machine, and then discard the remaining water inside the hose and the product. Then, re-install the product according to the installation instructions.• Press and hold the Filter Reset button for 3 seconds.

Appendixes

Specification sheet

English



Type		Microfiber filter
Model name		FT-MF
Dimensions	A (Width)	3.9 in. (100 mm)
	B (Height)	8.5 in. (215 mm)
	C (Depth with filter handle and rear cover)	11.1 in. (281 mm)
	D (Depth with rear cover)	10.4 in. (265 mm)
Net weight		4.4 lb. (2.0 kg)
Power consumption	AC 120 V / 60 Hz	0.1 A / 10 W

NOTE

- The design and specifications are subject to change without notice for quality improvement purposes.
- The dimensions stated here may differ slightly from the actual measurements depending on the measuring method.

LIMITED WARRANTY (U.S.A.)

LIMITED WARRANTY TO ORIGINAL CONSUMER PURCHASER WITH PROOF OF PURCHASE

This SAMSUNG brand product, as supplied and distributed by SAMSUNG ELECTRONICS AMERICA, INC. (SAMSUNG) and delivered new, in the original carton to the original consumer purchaser, is warranted by SAMSUNG against manufacturing defects in materials or workmanship for the limited warranty period, starting from the date of original purchase, of:

Parts and labor : One (1) year

This limited warranty is valid only on products purchased and used in the United States that have been installed, operated, and maintained according to the instructions attached to or furnished with the product. To receive warranty service, the purchaser must contact SAMSUNG at the address or phone number provided below for problem determination and service procedures. Warranty service can only be performed by a SAMSUNG authorized service center. The original dated bill of sale must be presented upon request as proof of purchase to SAMSUNG or SAMSUNG's authorized service center to receive warranty service.

SAMSUNG will provide in-home service within the contiguous United States during the warranty period at no charge, subject to availability of SAMSUNG authorized servicers within the customer's geographic area. If in-home service is not available, SAMSUNG may elect, at its option, to provide transportation of the product to and from an authorized service center. If the product is located in an area where service by a SAMSUNG authorized servicer is not available, you may be responsible for a trip charge or required to bring the product to a SAMSUNG authorized service center for service.

To receive in-home service, product must be unobstructed and accessible to the service agent.

During the applicable warranty period, a product will be repaired, replaced, or the purchase price refunded, at the sole option of SAMSUNG. SAMSUNG may use new or reconditioned parts in repairing a product, or replace the product with a new or reconditioned product. SAMSUNG may also replace any part covered by this warranty with a new or reconditioned part. Replacement parts and products are warranted for the remaining portion of the original product's warranty or ninety (90) days, whichever is longer. All replaced parts and products are the property of SAMSUNG and you must return them to SAMSUNG.

This limited warranty covers manufacturing defects in materials or workmanship encountered in normal household, noncommercial use of this product and shall not cover the following: damage that occurs in shipment, delivery, installation, and uses for which this product was not intended; damage caused by unauthorized modification or alteration of the product; product where the original factory serial numbers have been removed, defaced, changed in any way, or cannot be readily determined; cosmetic damage including scratches, dents, chips, and other damage to the product's finishes; damage caused by abuse, misuse, pest infestations, accident, fire, floods, or other acts of nature or God; damage caused by use of equipment, utilities, services, parts, supplies, accessories, applications, installations, repairs, external wiring or connectors not supplied or authorized by SAMSUNG; damage caused by incorrect electrical line current, voltage, fluctuations and surges; damage caused by failure to operate and maintain the product according to instructions; in-home instruction on how to use your product; and service to correct installation not in accordance with electrical or plumbing codes or correction of household electrical or plumbing (i.e., house wiring, fuses, or water inlet hoses). The cost of repair or replacement under these excluded circumstances shall be the customer's responsibility.

Visits by an authorized servicer to explain product functions, maintenance or installation are not covered by this limited warranty. Please contact SAMSUNG at the number below for assistance with any of these issues.

EXCLUSION OF IMPLIED WARRANTIES

IMPLIED WARRANTIES, INCLUDING THE IMPLIED WARRANTIES OF MERCHANTABILITY OR FITNESS FOR A PARTICULAR PURPOSE, ARE LIMITED TO ONE YEAR OR THE SHORTEST PERIOD ALLOWED BY LAW.

Some states do not allow limitations on how long an implied warranty lasts, so the above limitations or exclusions may not apply to you. This warranty gives you specific rights, and you may also have other rights, which vary from state to state.

LIMITATION OF REMEDIES

YOUR SOLE AND EXCLUSIVE REMEDY IS PRODUCT REPAIR, PRODUCT REPLACEMENT, OR REFUND OF THE PURCHASE PRICE AT SAMSUNG'S OPTION, AS PROVIDED IN THIS LIMITED WARRANTY. SAMSUNG SHALL NOT BE LIABLE FOR SPECIAL, INCIDENTAL OR CONSEQUENTIAL DAMAGES, INCLUDING BUT NOT LIMITED TO TIME AWAY FROM WORK, HOTELS AND/OR RESTAURANT MEALS, REMODELING EXPENSES, LOSS OF REVENUE OR PROFITS, FAILURE TO REALIZE SAVINGS OR OTHER BENEFITS REGARDLESS OF THE LEGAL THEORY ON WHICH THE CLAIM IS BASED, AND EVEN IF SAMSUNG HAS BEEN ADVISED OF THE POSSIBILITY OF SUCH DAMAGES. Some states do not allow exclusion or limitation of incidental or consequential damages, so the above limitations or exclusions may not apply to you. This warranty gives you specific rights, and you may also have other rights, which vary from state to state.

SAMSUNG does not warrant uninterrupted or error-free operation of the product. No warranty or guarantee given by any other person, firm, or corporation with respect to this product shall be binding on SAMSUNG.

To obtain warranty service, please contact SAMSUNG at:

Samsung Electronics America, Inc.

85 Challenger Road

Ridgefield Park, NJ 07660

1-800-SAMSUNG (726-7864)

www.samsung.com/us/support

Warranty (CANADA)

LIMITED WARRANTY TO ORIGINAL PURCHASER

This SAMSUNG brand product, as supplied and distributed by SAMSUNG ELECTRONICS CANADA, INC. (SAMSUNG) and delivered new, in the original carton to the original consumer purchaser, is warranted by SAMSUNG against manufacturing defects in materials and workmanship for a limited warranty period of:

Parts and labor : One (1) year

This limited warranty begins on the original date of purchase, and is valid only on products purchased and used in the Canada. To receive warranty service, the purchaser must contact SAMSUNG for problem determination and service procedures. Warranty service can only be performed by a SAMSUNG authorized service center. The original dated bill of sale must be presented upon request as proof of purchase to SAMSUNG or SAMSUNG's authorized service center. SAMSUNG will provide in-home service during the warranty period at no charge, subject to availability within the Canada. In-home service is not available in all areas.

To receive in-home service, product must be unobstructed and accessible to the service agent. If service is not available, SAMSUNG may elect to provide transportation of the product to and from an authorized service center.

SAMSUNG will repair, replace, or refund this product at our option and at no charge as stipulated herein, with new or reconditioned parts or products if found to be defective during the limited warranty period specified above. All replaced parts and products become the property of SAMSUNG and must be returned to SAMSUNG. Replacement parts and products assume the remaining original warranty, or ninety (90) days, whichever is longer. This limited warranty covers manufacturing defects in materials and workmanship encountered in normal, noncommercial use of this product and shall not apply to the following: damage that occurs in shipment; delivery and installation; applications and uses for which this product was not intended; altered product or serial numbers; cosmetic damage or exterior finish; accidents, abuse, neglect, fire, water, lightning, or other acts of nature or God; use of products, equipment, systems, utilities, services, parts, supplies, accessories, applications, installations, repairs, external wiring or connectors not supplied or authorized by SAMSUNG that damage this product or result in service problems; incorrect electrical line voltage, fluctuations and surges; customer adjustments and failure to follow operating instructions, maintenance and environmental instructions that are covered and prescribed in the instruction book; product removal and reinstallation; problems caused by pest infestations. This limited warranty does not cover problems resulting from incorrect electric current, voltage or supply, light bulbs, house fuses, house wiring, cost of a service call for instructions, or fixing installation errors. SAMSUNG does not warrant uninterrupted or error-free operation of the product.

EXCEPT AS SET FORTH HEREIN, THERE ARE NO WARRANTIES ON THIS PRODUCT EITHER EXPRESS OR IMPLIED, AND SAMSUNG DISCLAIMS ALL WARRANTIES INCLUDING, BUT NOT LIMITED TO, ANY IMPLIED WARRANTIES OF MERCHANTABILITY, INFRINGEMENT OR FITNESS FOR A PARTICULAR PURPOSE.

NO WARRANTY OR GUARANTEE GIVEN BY ANY PERSON, FIRM, OR CORPORATION WITH RESPECT TO THIS PRODUCT SHALL BE BINDING ON SAMSUNG. SAMSUNG SHALL NOT BE LIABLE FOR LOSS OF REVENUE OR PROFITS, FAILURE TO REALIZE SAVINGS OR OTHER BENEFITS, OR ANY OTHER SPECIAL, INCIDENTAL OR CONSEQUENTIAL DAMAGES CAUSED BY THE USE, MISUSE, OR INABILITY TO USE THIS PRODUCT, REGARDLESS OF THE LEGAL THEORY ON WHICH THE CLAIM IS BASED, AND EVEN IF SAMSUNG HAS BEEN ADVISED OF THE POSSIBILITY OF SUCH DAMAGES.

NOR SHALL RECOVERY OF ANY KIND AGAINST SAMSUNG BE GREATER IN AMOUNT THAN THE PURCHASE PRICE OF THE PRODUCT SOLD BY SAMSUNG AND CAUSING THE ALLEGED DAMAGE. WITHOUT LIMITING THE FOREGOING, PURCHASER ASSUMES ALL RISK AND LIABILITY FOR LOSS, DAMAGE, OR INJURY TO PURCHASER AND PURCHASER'S PROPERTY AND TO OTHERS AND THEIR PROPERTY ARISING OUT OF THE USE, MISUSE, OR INABILITY TO USE THIS PRODUCT. THIS LIMITED WARRANTY SHALL NOT EXTEND TO ANYONE OTHER THAN THE ORIGINAL PURCHASER OF THIS PRODUCT, IS NONTRANSFERABLE AND STATES YOUR EXCLUSIVE REMEDY.

Some provinces do not allow limitations on how long an implied warranty lasts, or the exclusion or limitation of incidental or consequential damages, so the above limitations or exclusions may not apply to you.

This warranty gives you specific rights, and you may also have other rights, which vary from province to province.

To obtain warranty service, please contact SAMSUNG at:

Samsung Electronics Canada Inc.

2050 Derry Road West,

Mississauga, Ontario L5N 0B9 Canada

1-800-SAMSUNG (726-7864)

www.samsung.com/ca/support (English)

www.samsung.com/ca_fr/support (French)

FAX : 1-866-436-4617

Visits by a Service Engineer to explain functions, maintenance, or installation are not covered by warranty.

Please contact your Samsung call agent for help with any of these issues.

SAMSUNG



DC68-04471E-00