

RVL2484

FIRECLAY FARMHOUSE SINK

RUVATI®
SPECIFICATION SHEET

MATERIAL

- True Fireclay - Made in UAE.
- 1/2-inch thick solid fireclay.
- Fired at 2900F for extreme strength.

FEATURES

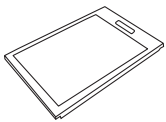
- Compatible with optional Ledge-Fit accessories.
- Large deep bowl.
- Rounded inside corners.
- Glossy enamel surface resistant to stains and scratches.



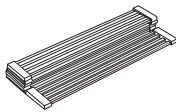
COLOR OPTIONS

WH: White

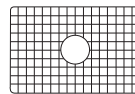
IN THE BOX



Cutting Board
[RVA1217]



Folding Rack
[RVA1395]



Rinse Grid
[RVA62484]

NOMINAL DIMENSIONS

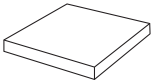
Exterior: 24" (wide) x 18" (front-to-back)
Interior Bowl: 23" (wide) x 17" (front-to-back)
Bowl Depth: 9"
Minimum Cabinet Size: 27" wide
Drain Hole Size: 3½"

Installation Type:
Farmhouse
Inside Corners:
Rounded
Drain Location:
Center

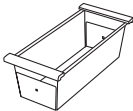
RUVATI USA
www.ruvati.com

Phone: 1.855.478.8284
Email: support@ruvati.com

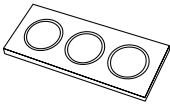
OPTIONAL ACCESSORIES (SOLD SEPARATELY)



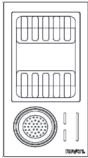
Butcher Block
[RVA2445ACA]



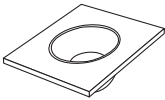
Colander
[RVA1317]



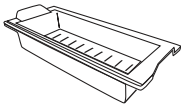
Condiment
Serving Tray
[RVA1377]



Caddy Drying Rack
[RVA1542BWC]



Mixing Bowl
and Platform
[RVA1288]



Colander
[RVA1367BLK]

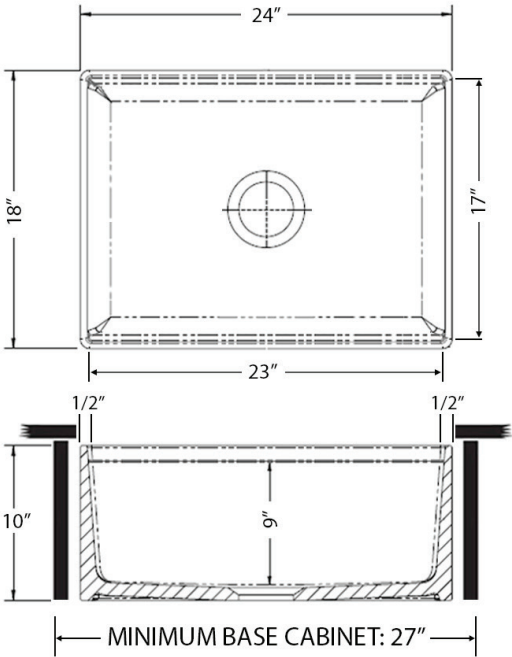


Basket Strainer
[RVA1039ST]



Deep Basket
Disposal Flange/Stopper
[RVA1052ST]

DIMENSIONS



cUPC certified by IAPMO
to meet US and Canada
plumbing standards.



SCAN TO REGISTER
YOUR WARRANTY

or visit
ruvati.com/register