

RVL2387

FIRECLAY FARMHOUSE SINK

RUVATI[®]
SPECIFICATION SHEET

MATERIAL

- True Italian Fireclay - Made in ITALY.
- 1-inch thick solid fireclay.
- Fired at 2900F for extreme strength.



FEATURES

- Large deep bowl.
- Rounded inside corners.
- Glossy enamel surface resistant to stains and scratches.

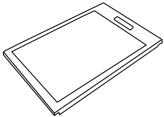


COLOR OPTIONS

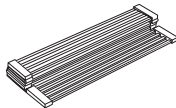
BK: Glossy Black
WH: White

BS: Biscuit
EG: Emerald Green

IN THE BOX



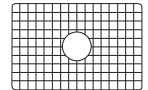
Cutting Board
[RVA1217]



Folding Rack
[RVA1395]



Basket Strainer
[RVA1039ST]



Rinse Grid
[RVA62387]

NOMINAL DIMENSIONS

Exterior: 33" (wide) x 18-1/3" (front-to-back)
Interior Bowl: 32" (wide) x 17-1/2" (front-to-back)
Bowl Depth: 9"
Minimum Cabinet Size: 36" wide
Drain Hole Size: 3 1/2"

Installation Type:
Farmhouse
Inside Corners:
Rounded
Drain Location:
Center

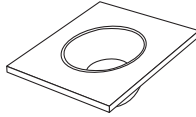
RUVATI USA
www.ruvati.com

Phone: 1.855.478.8284
Email: support@ruvati.com

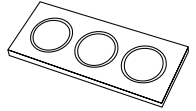
OPTIONAL ACCESSORIES (SOLD SEPARATELY)



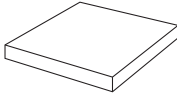
Deep Basket
Disposal Flange
[RVA1049ST]



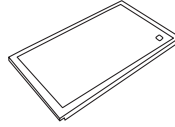
Mixing Bowl
and Platform
[RVA1288]



Condiment
Serving Tray
[RVA1377]

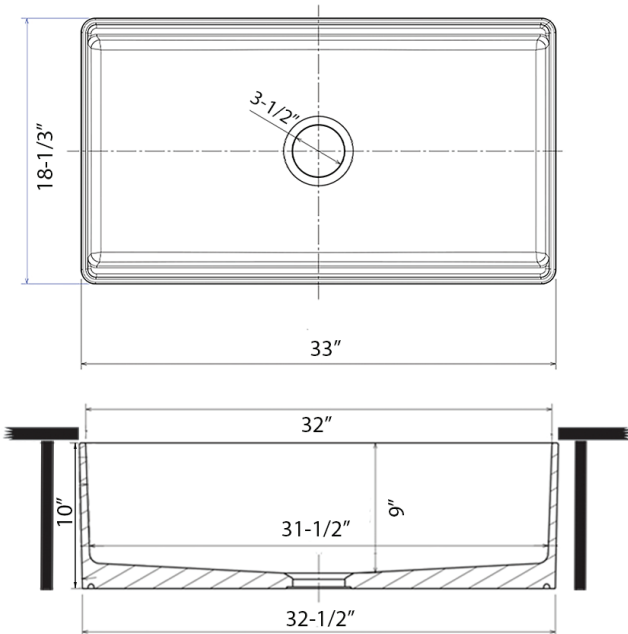


Butcher Block
[RVA2445ACA]



Black Plastic
Cutting Board
[RVA1217BLK]

DIMENSIONS



NOTE: Dimensions provided as a guide only. Use actual sink for cutout measurements.

Register your product at www.ruvati.com/register.