

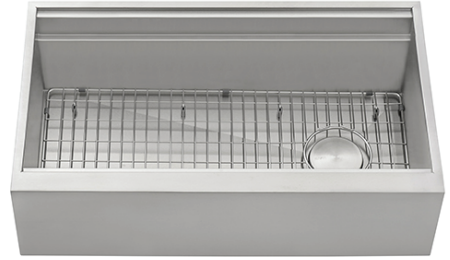
RVH9333

APRON-FRONT WORKSTATION SINK

RUVATI[®]
SPECIFICATION SHEET

MATERIAL

True 16 Gauge Thickness
Premium T304 Grade Stainless Steel
18/10 Chromium/Nickel Content
Commercial Brushed Finish

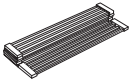


FEATURES

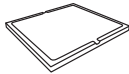
- Heavy duty sound guard padding and undercoating
- Slanted bottom with elegant drain grooves for easy draining
- Dual-Tier Ledge for Accessories



IN THE BOX



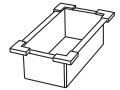
Folding Rack
[RVA1395]



Cutting Board
[RVA1233]



Mixing Bowl and Platform
[RVA1288]



Collander
[RVA1310]



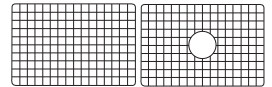
Basket Strainer
[RVA1025]



Drain Cover
[RVA1035]



Condiment
Serving Tray
[RVA1377]



Rinse Grid
[RVA68333]

NOMINAL DIMENSIONS

Exterior: 45" (wide) x 20-1/8" (front-to-back)
Interior Bowl: 43-3/8" (wide) x 14-5/8" (front-to-back)
Bowl Depth: 10"
Minimum Cabinet Size: 48" wide
Drain Hole Size: 3 1/2"

Installation Type:
Apron-Front

Inside Corners:
Zero Radius

Drain Location:
Offset

RUVATI USA

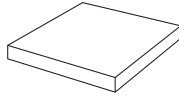
www.ruvati.com

Phone: 1.855.478.8284
Email: support@ruvati.com

OPTIONAL ACCESSORIES (SOLD SEPARATELY)

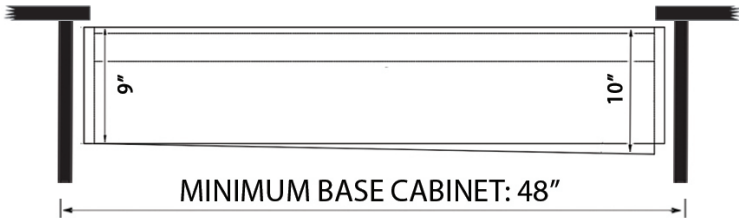
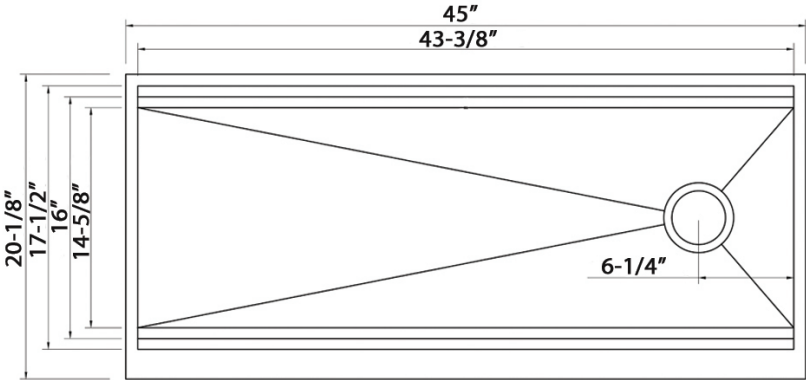


Deep Basket
Disposal Flange
[RVA1049ST]



Butcher Block
[RVA2445ACA]

DIMENSIONS



Register your product at www.ruvati.com/register.