



PARTS LIST / LISTE DES PIÈCES / LISTA DE PIEZAS

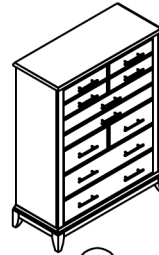
DESCRIPTION / LA DESCRIPCION / DESCRIPCIÓN : DRAWER CHEST-COMMODE À TIROIRS-CÓMODA

⚠ WARNING

Children have died from furniture tip-over. To reduce the risk of furniture tip-over:

- ALWAYS install tip-over restraint provided.
- NEVER put a TV on this product.
- NEVER allow children to stand, climb or hang on drawers, doors, or shelves.
- NEVER open more than one drawer at a time.
- Place heaviest items in the lowest drawers.

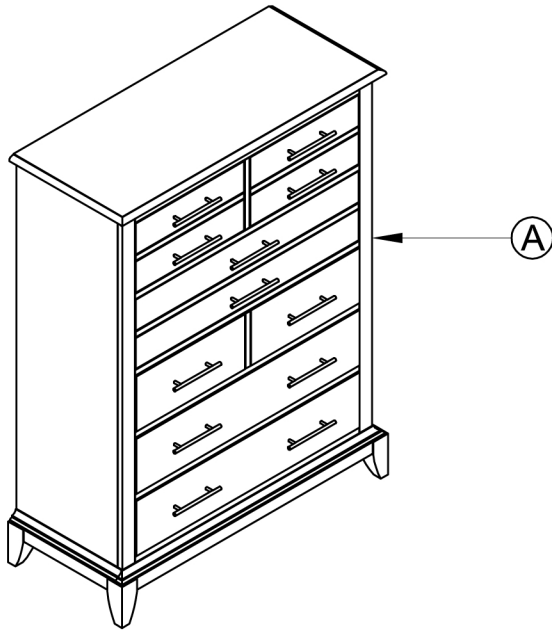
This is a permanent label. Do not remove!



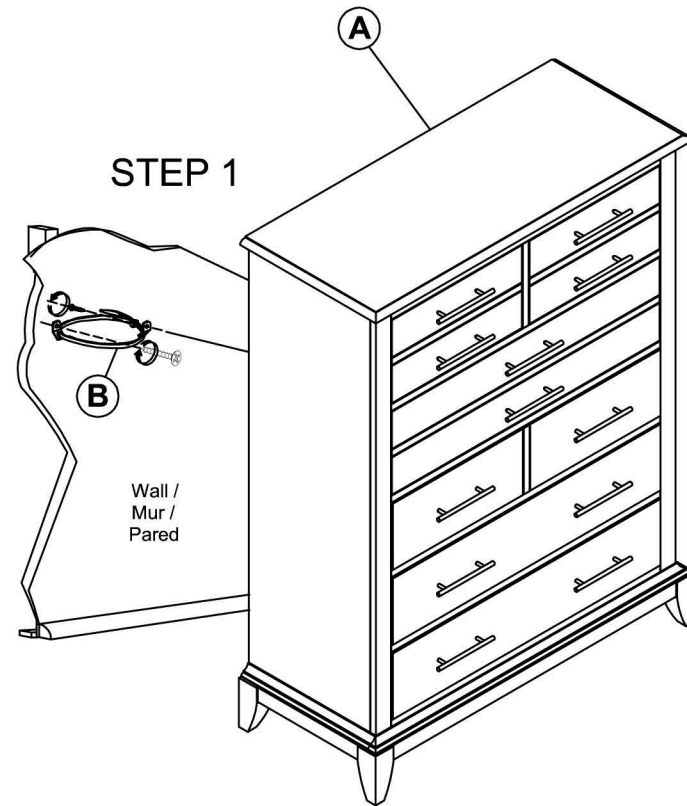
x1 Chest
x1 Commode
x1 Cómoda



x1 Furniture tipping restraint *
x1 Système antibasculement
x1 Control para evitar vuelcos



* Replaceable Part

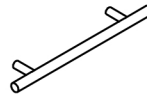
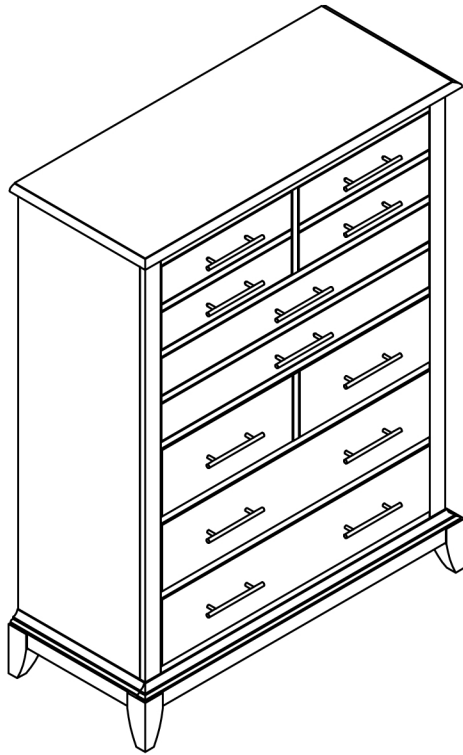


* Replaceable Part



REPLACEABLE PART/ PARTIE REMPLACABLE/ PARTE REEMPLAZABLE

DESCRIPTION / LA DESCRIPCION / DESCRIPCIÓN : DRAWER CHEST-COMMODE À TIROIRS-CÓMODA



x12 RS838-010- Pull - Pull with Screw*
Tirer et vis
Tire y Tornillo



x6 COMGLIDE 12-35 Glide 12inch 35mm*
Glissière
Carril de deslizamiento



x4 RC-BL-NAIL-Black Plastic Nail*
Clou en plastique
Clavo de plástico



x1 RC-ANTI-TIP Anti-tipping Restraint*
Liste des pièces de quincaillerie antibasculement
Lista del kit de materiales antivuelco

* Replaceable Part