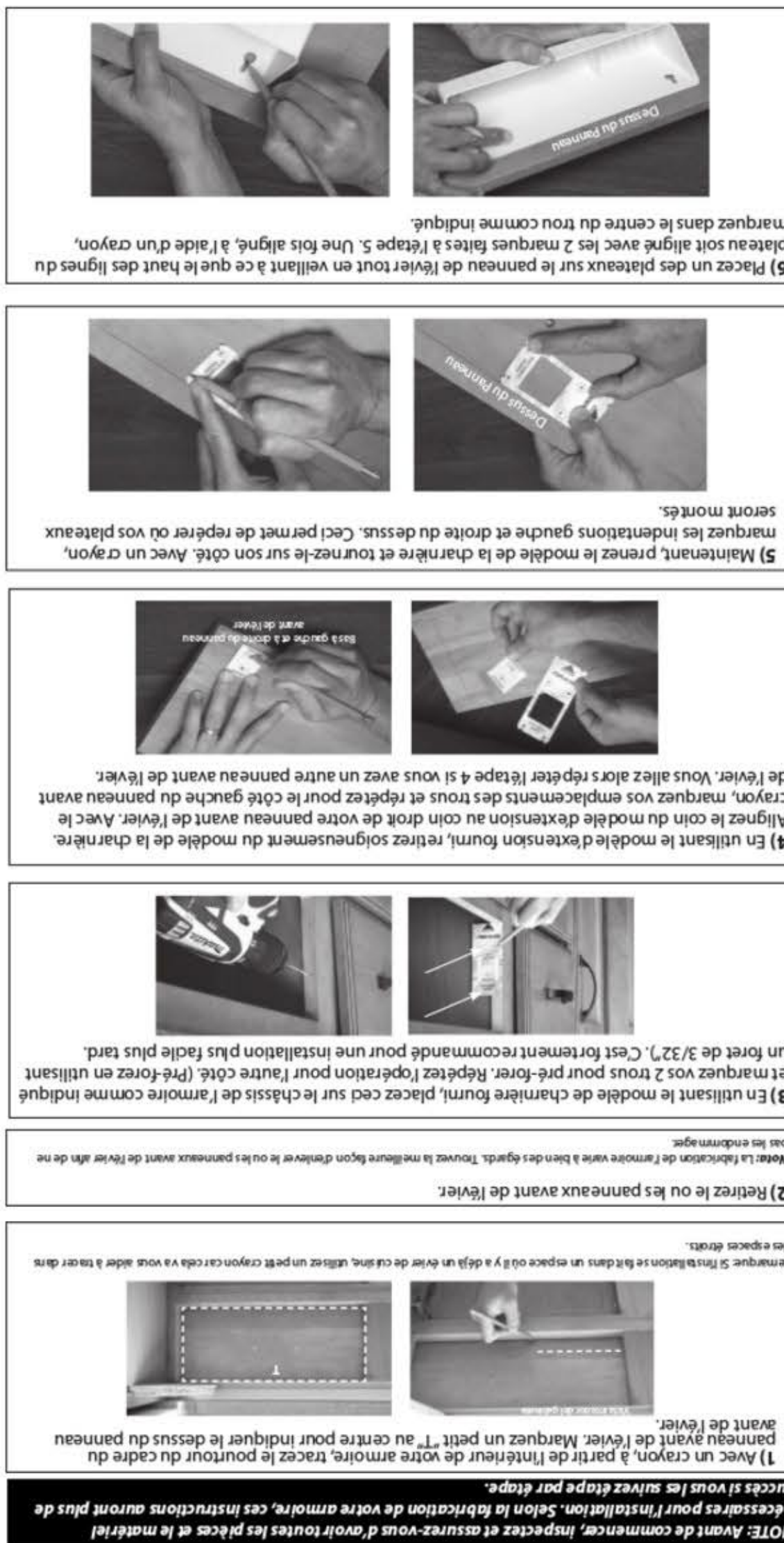


Euro Hinge



DE LA CHARNIÈRE EUROPÉENNE



DES CHARNIÈRES
SELF-HOLDIN' ET 45°

Outils requis:  3/32"

DE ENSEMBLE: 30 MIN

ENTRETIEN ET MAINTENANCE: NETTOYER AVEC UN LINGE HUMIDE ET SÈCHER LES PIÈCES COMPLÈTEMENT.

INSTRUCTIONS D'INSTALLATION

REV-A-SHELF

12400 East Jones Way, Louisville, KY 40299
 (800) 626-1126 | www.rev-a-shelf.com

REV-A-SHELF

12400 East Jones Way, Louisville, KY 40299
 (800) 626-1126 | www.rev-a-shelf.com

TOOLS REQUIRED:  3/32"

ESTIMATED ASSEMBLY TIME: 30 MIN

CARE AND MAINTENANCE: Clean with a damp cloth and wipe parts dry.

Self-Holdin' Hinge
Soft-Close and 45° Hinge



NOTE: Before you begin inspect and make sure you have all the individual parts and hardware necessary for installation. Depending on your cabinet construction, these instructions will have the highest success if you follow step-by-step.

1) Using a pencil, from the inside of your cabinet, trace around the frame perimeter of the sink front panel. Mark a small "T" in the center to indicate the top of the sink front panel.

2) Remove the sink front panel(s).
 Note: Cabinet construction all vary in many ways, find the best way to remove your sink front panel(s) so not to damage them.

3) Using the provided hinge template, place this on the frame of the cabinet as shown and mark your (2) holes for pre-drilling. Repeat for the other side. (Pre-drill using 3/32" drill bit) This is highly recommended for easier installation later.

4) Using the provided extension template, carefully remove from the hinge template. Align the corner of the extension template to the right corner of your sink front panel. Using the pencil mark your hole locations and repeat for the left side of the sink front panel. You will then repeat step 4 if you have another sink front panel.

5) Now take the hinge template and turn on its side. Using a pencil mark the left and right top indentations. This will locate where your trays will mount.

6) Lay one of the trays on the sink panel while making sure that the top of the tray lines up with the (2) marks you made in step 5. Once lined up, using a pencil, mark in the center of the hole as shown.

7) Now that all holes are marked, using a 3/32 drill bit, carefully drill all of the marked locations. Be very careful to NOT drill thru your panel.

8) Using the provided (4) truss head screws attach the hinge to your sink front panel. Paying attention that there is a left and right hinge. Repeat if you have a second sink front panel.

9) Using (2) truss head screws attach as shown, but do not tighten all the way down as you will need to attach your sink tray(s) to these.

10) Take the entire sink front panel and line it up with your cabinet opening while extending the hinge. Attach hinge to face frame using provided flat head screws.

11) Repeat for other side of sink front panel. Finally attach your trays and tighten down.

NOTE: the hinges have slotted holes in case you need to micro-adjust sink panel left or right

NOTE: Using a screwdriver is recommended, but a drill is acceptable if holes are properly pre-drilled.