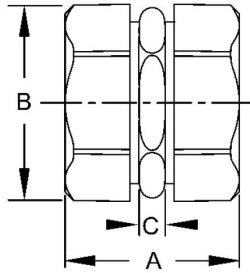




**EMT COMPRESSION COUPLINGS - DIE CAST ZINC**

Compression Couplings Die Cast Zinc  
N/A

**B14**



Catalog #: 2822

**APPLICATIONS**

For use to couple two ends of EMT conduit.  
RACO Compression couplings are suitable for applications above 600V

**PRODUCT FEATURES**

1/2 in. to 4 in. couplings provide concrete-tight connections  
Rugged metallic construction provides mechanical protection for the raceway  
Hex compression nuts assure easy wrench installation  
N/A

**UL LISTED**

File E195970

**CSA**

C22.2 No. 18

**GENERAL PRODUCT INFORMATION**

Trade Size: 1/2 in.

**DRAWING DIMENSIONS**

Dimension A: 1-45/64 in.  
Dimension B: 29/32 in.  
Dimension C: 21/64 in.

**PACKAGING**

Package Type: Carton  
Std. Pkg.: 50  
Ship Carton Qty.: 500  
Product UPC-A Labeled: No  
Weight (Lbs. Per/C): 10.60  
Ship Carton Length (in.): 19.00  
Ship Carton Width (in.): 10.95  
Ship Carton Height (in.): 8.00  
Ctn Weight (Lbs.): 53.00  
UPC Number: 050169028223  
I2of5: 50050169028228