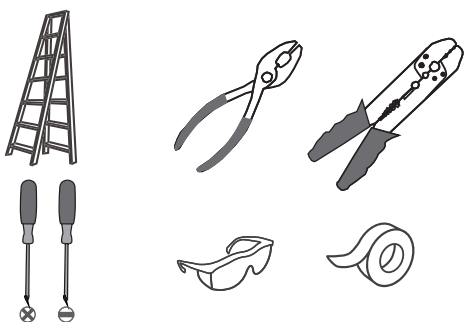
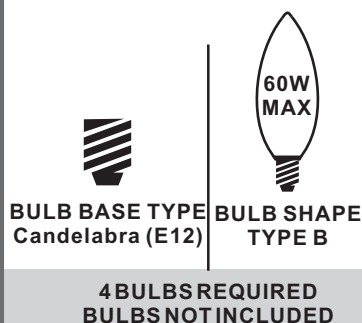


### Tools Required



### Light Source



### Fixture Height Adjustable 12.75" to 50.75"

#### ⚠ Warnings and Cautions

Turn off the electricity at the circuit breaker before installation. Consult a licensed electrician if in doubt about installation.

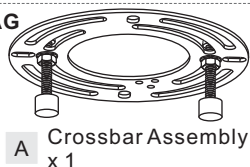
Turn off power to the fixture and allow the bulbs to cool before replacing.

### Package Contents

**Preparation:** Identify and inspect all parts before beginning the installation.

Missing or damaged parts? Contact your original place of purchase.

#### PARTS BAG



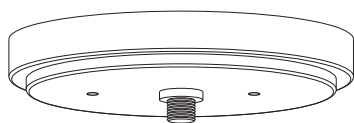
**A** Crossbar Assembly  
x 1



**B** Outlet Box Screw  
x 2



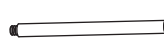
**C** Wire Connector  
x 3



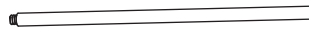
**D** Ceiling  
Canopy  
x 1



**E** Swivel  
x 1

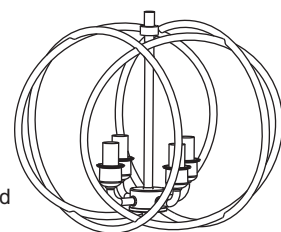


**G** 6" L Rod  
x 2



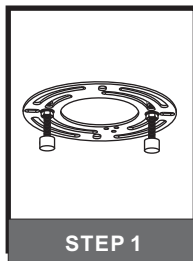
**H** 12" L Rod  
x 2

**F** Fixture Body  
x 1



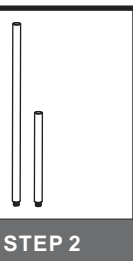
### Table of Contents

#### Crossbar Assembly



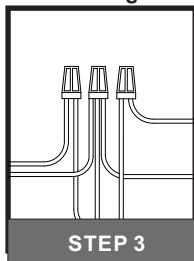
STEP 1

#### Downrod



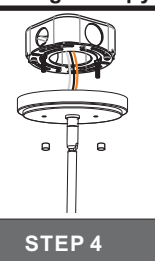
STEP 2

#### Wiring



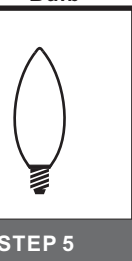
STEP 3

#### Ceiling Canopy



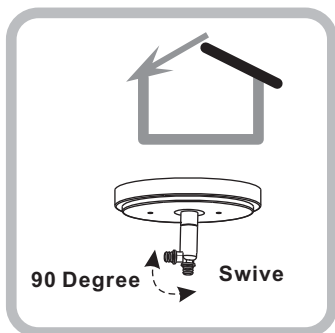
STEP 4

#### Bulb



STEP 5

### STEP 1

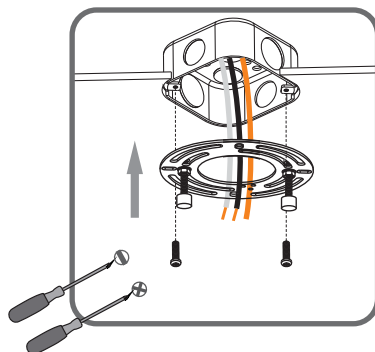


90 Degree Swive

For angled ceilings,  
Swivel opening towards wall.

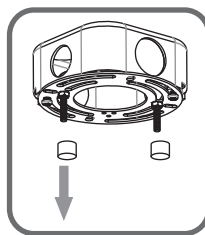
1

Step 1  
Install crossbar assembly

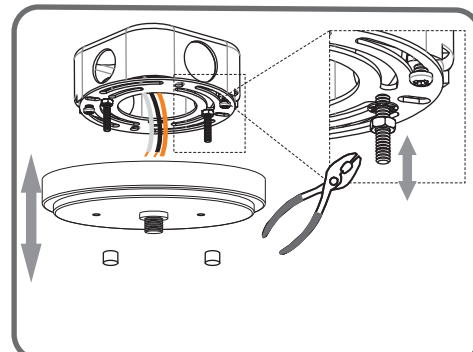


2

Step 2 - 3  
Test fitting ceiling canopy to  
mounting screws



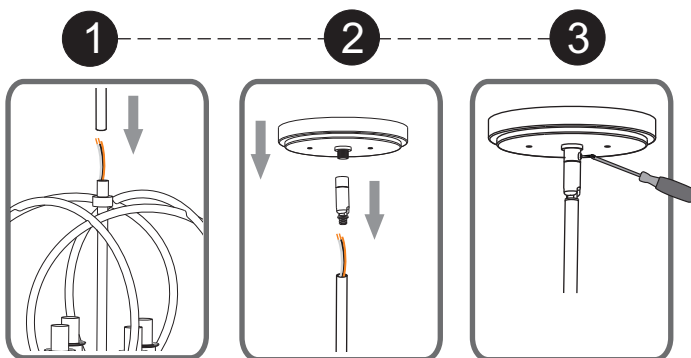
3



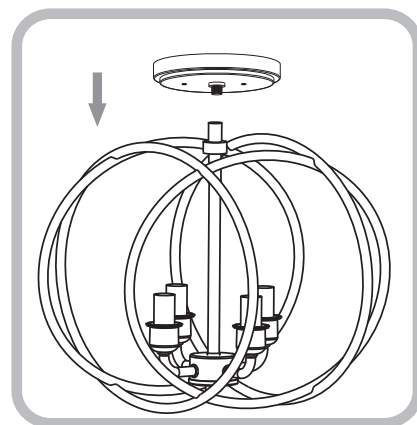
## STEP 2

### Optional Rods

8' ceiling:  
(1) 6"L + (1) 12"L  
rods  
9' ceiling:  
(1) 6"L + (2) 12"L  
rods

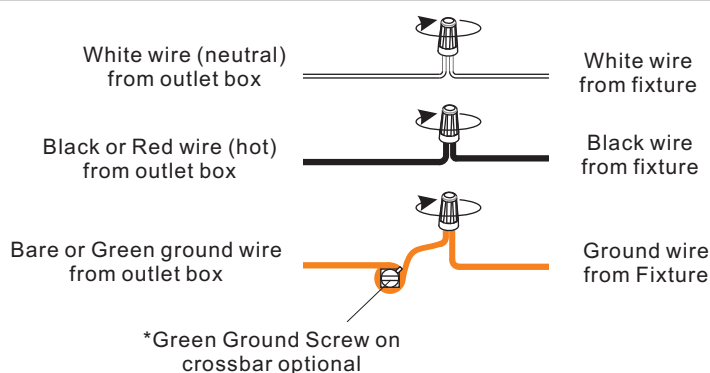


OPTION 1

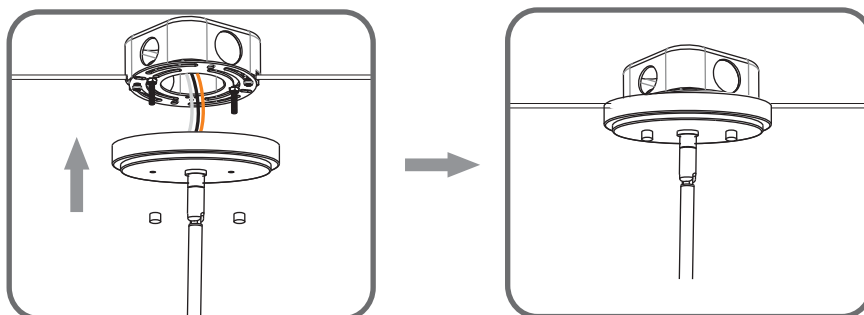


OPTION 2

## STEP 3



## STEP 4



## STEP 5

OPTION 1

OPTION 2

