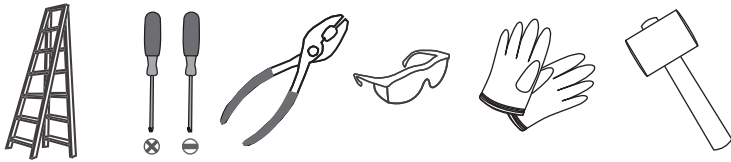


Tools Required



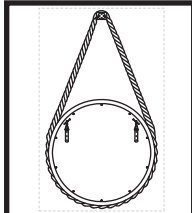
⚠ Warnings and Cautions

These instructions are provided for your safety. It is very important you read them completely before installing the mirror.

Quoizel recommends 2 people for each step during assembly.

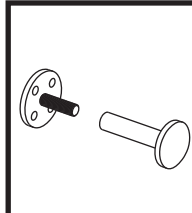
Table of Contents

Mirror Template



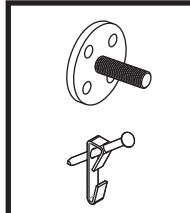
STEP 1

Separate Rope Peg



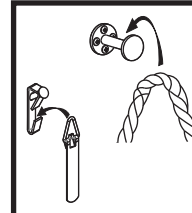
STEP 2

Install Hanger & Rope Peg Base



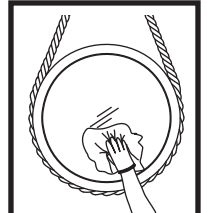
STEP 3

Install Mirror



STEP 4

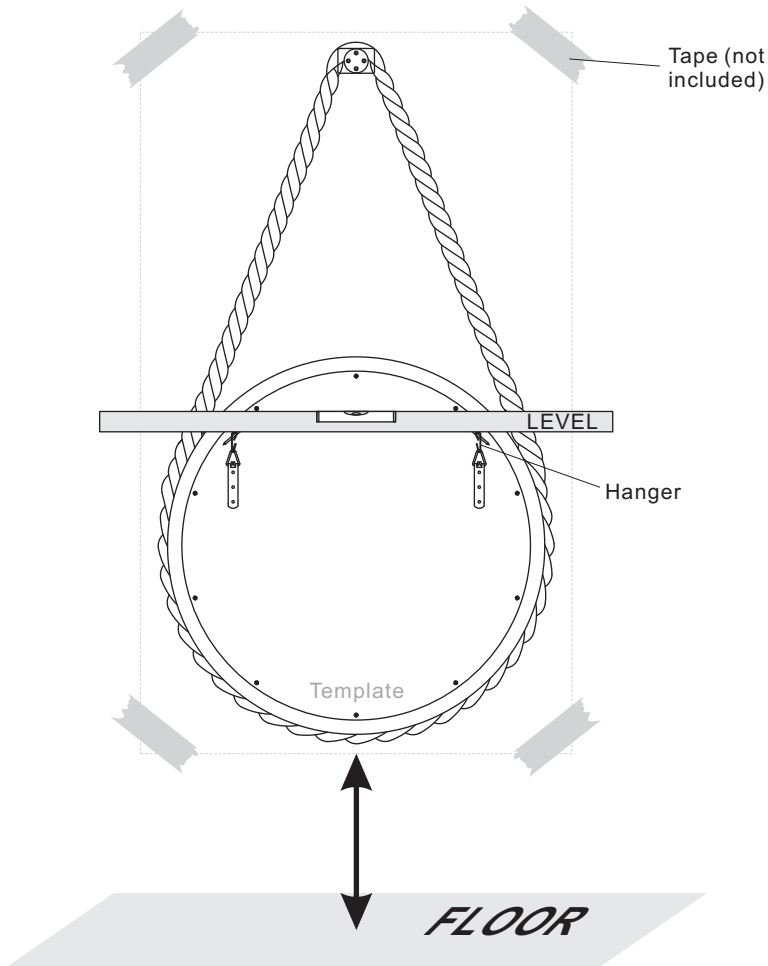
Clean



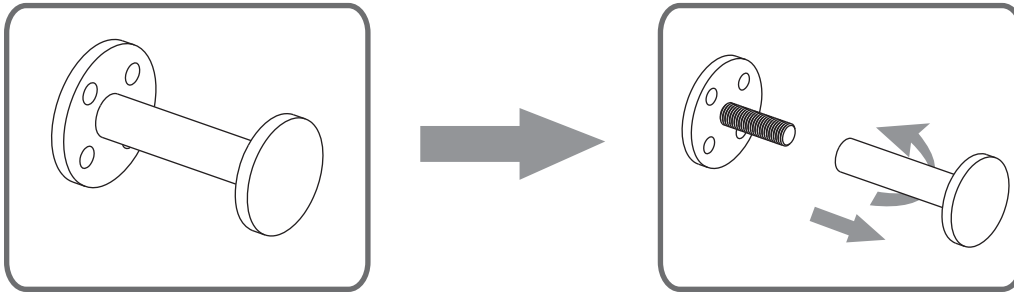
STEP 5

STEP 1

Temporarily attach the mirror template on the wall in the desired mirror hanging location.

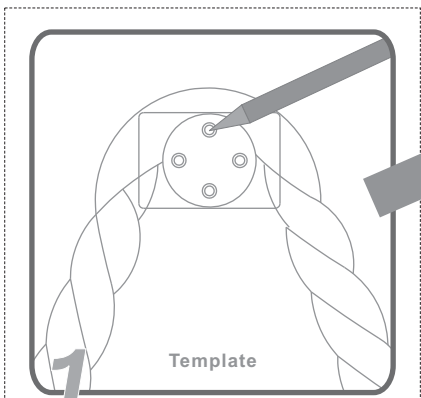


STEP 2



STEP 3

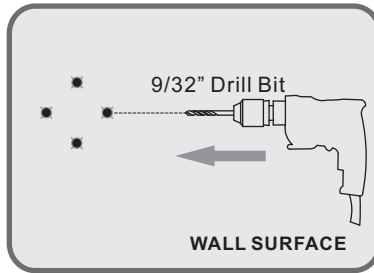
Poke and Mark Points on the Wall



Remove Mirror Template

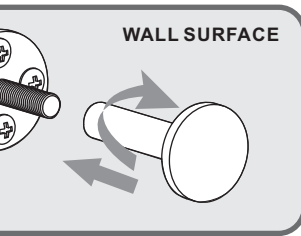
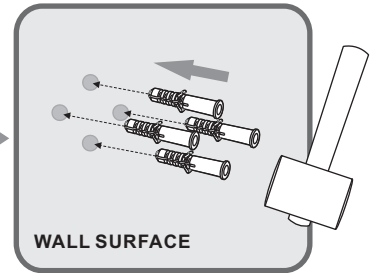
1

Drill Hole

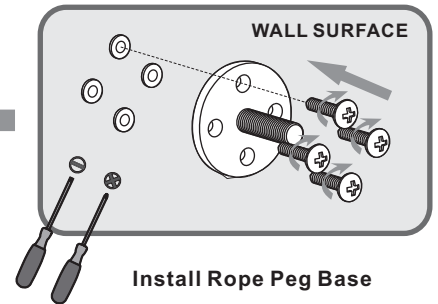


2

Insert Wall Anchors



Install Rope Peg

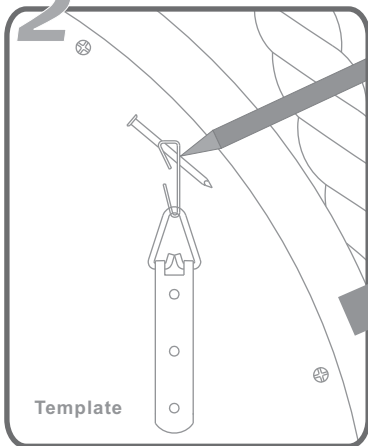


Install Rope Peg Base

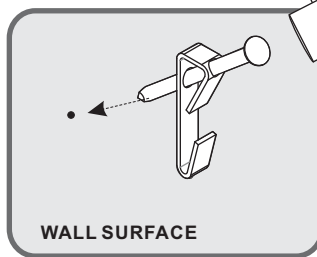
4

3

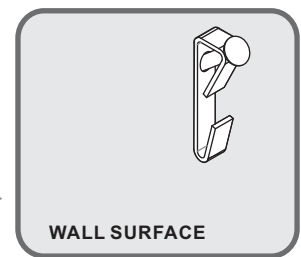
2



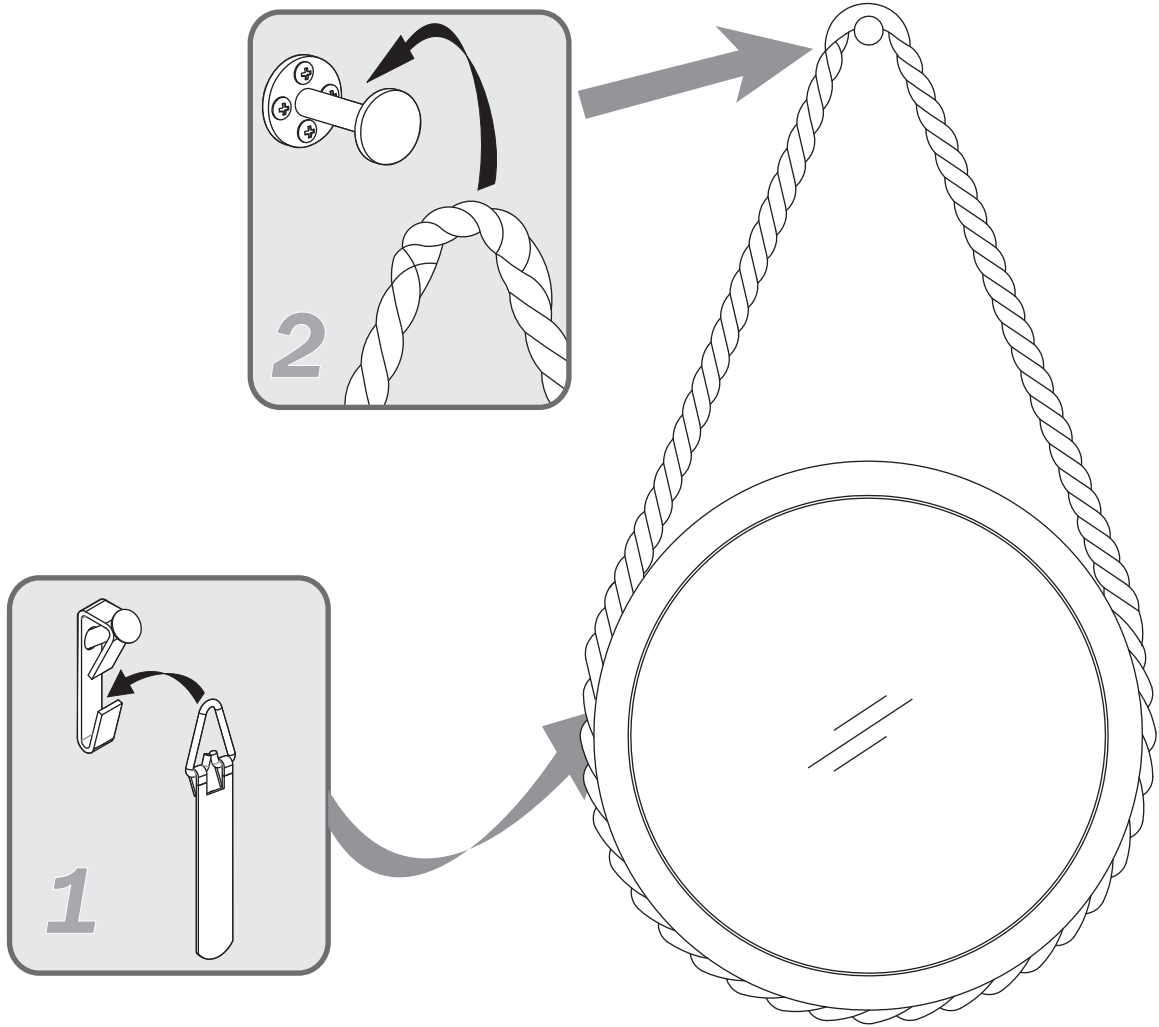
Remove Mirror Template



Hammer the Nail



STEP 4



STEP 5

