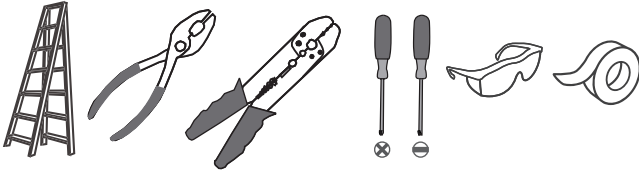


**Tools Required**



**Light Source**

22W  
**LED**

**Warnings and Cautions**

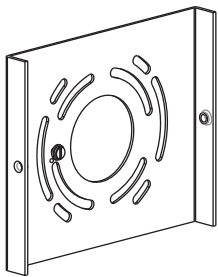
Turn off the electricity at the circuit breaker before installation. Consult a licensed electrician if in doubt about installation.

**Package Contents**

**Preparation:** Identify and inspect all parts before beginning the installation.

Missing or damaged parts? Contact your original place of purchase.

**PARTS BAG**

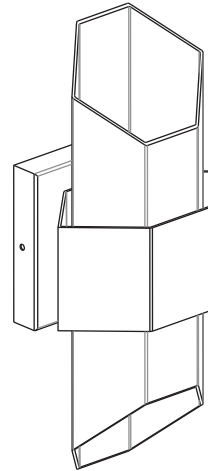


**A** Inner Backplate  
x 1

**B** Lock Screw  
x 2

**C** Outlet Box Screw  
x 2

**D** Wire Connector  
x 3

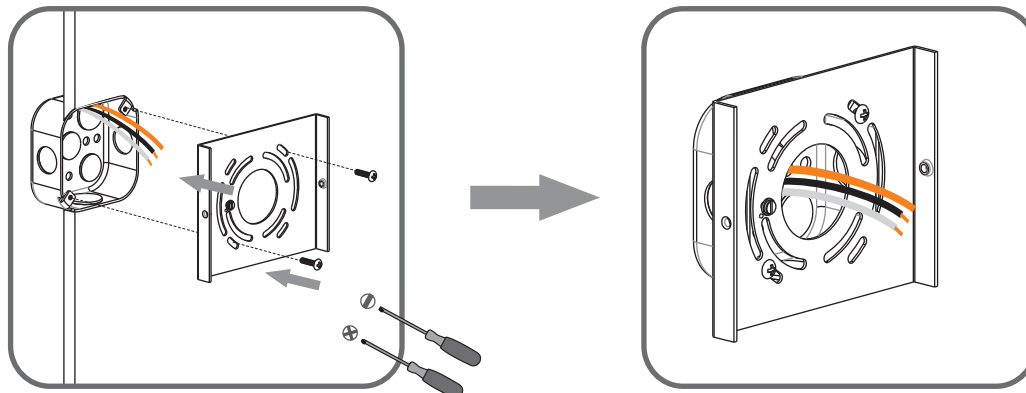


**E** Fixture Body  
x 1

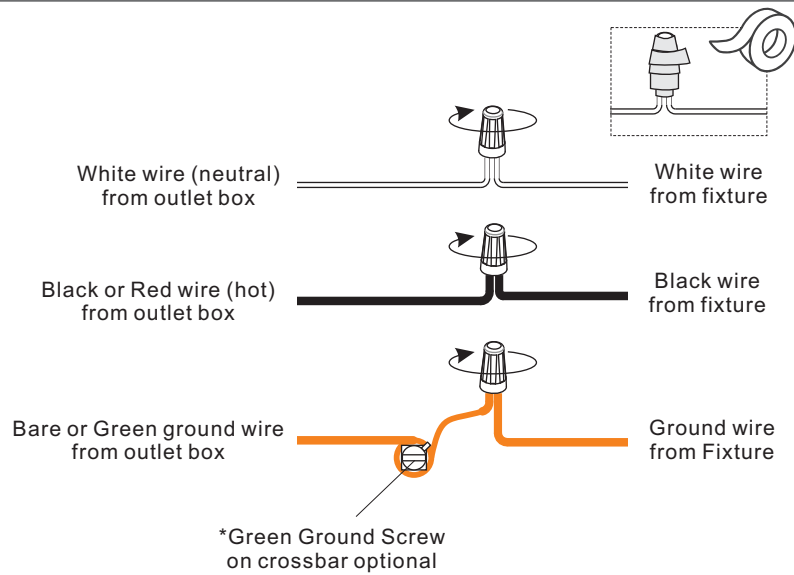
**Table of Contents**

Inner Backplate	Wiring	Fixture Body	Caulk
STEP 1	STEP 2	STEP 3	STEP 4

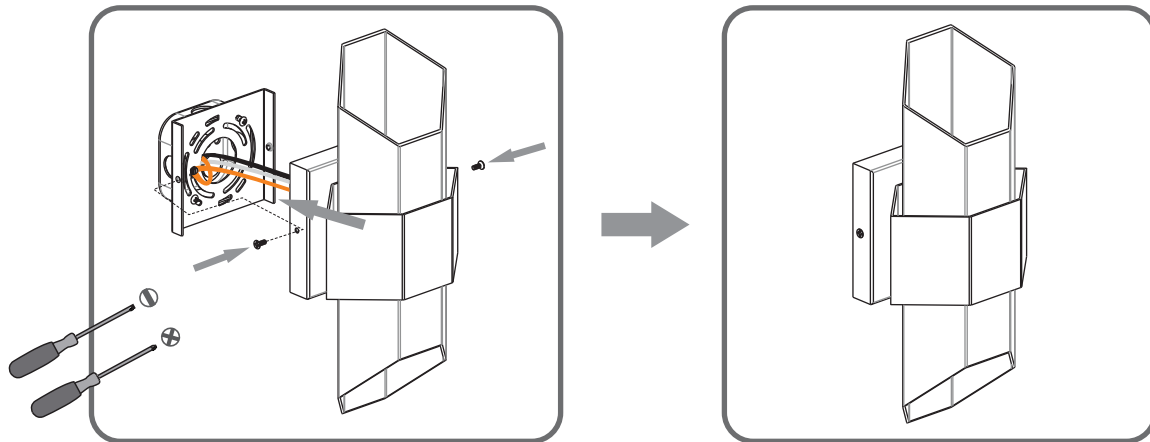
**STEP 1**



## STEP 2



## STEP 3



## STEP 4

