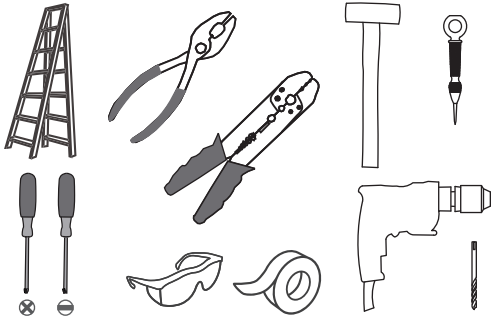
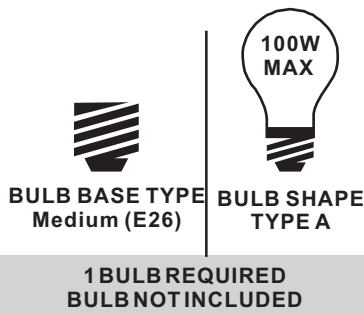


Tools Required



Light Source



Warnings and Cautions

Turn off the electricity at the circuit breaker before installation. Consult a licensed electrician if in doubt about installation.



Turn off power to the fixture and allow the bulbs to cool before replacing.

Package Contents

Preparation: Identify and inspect all parts before beginning the installation.

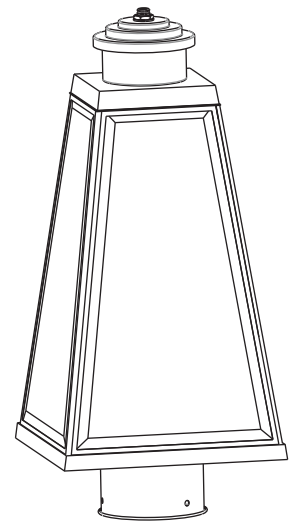
Missing or damaged parts? Contact your original place of purchase.

PARTS BAG

-  **A** Mounting Screw x 3
-  **B** Wire Connector x 3


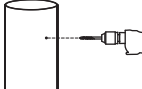
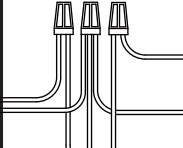




C Fixture Loop x 1

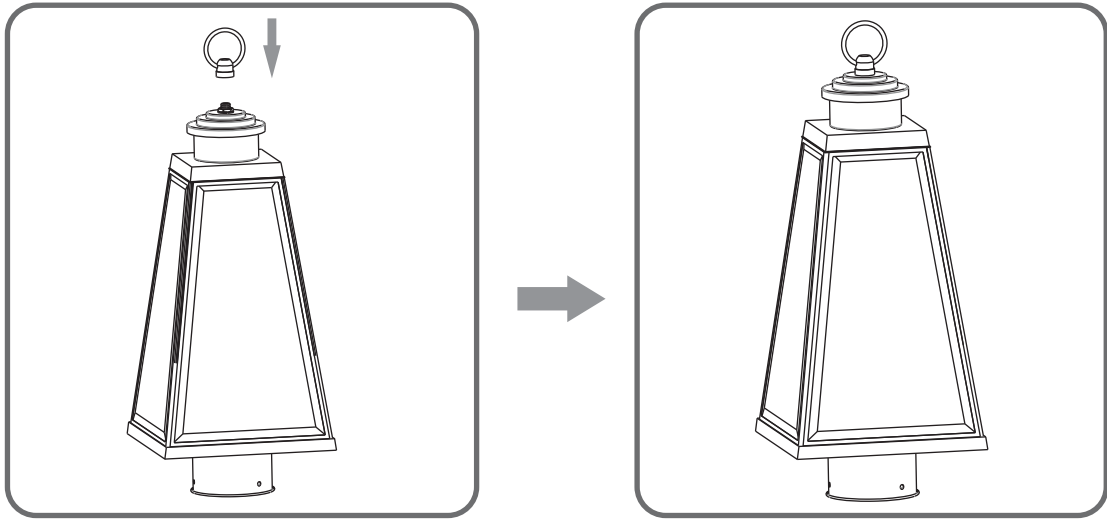


Fixture Body x 1 **D**

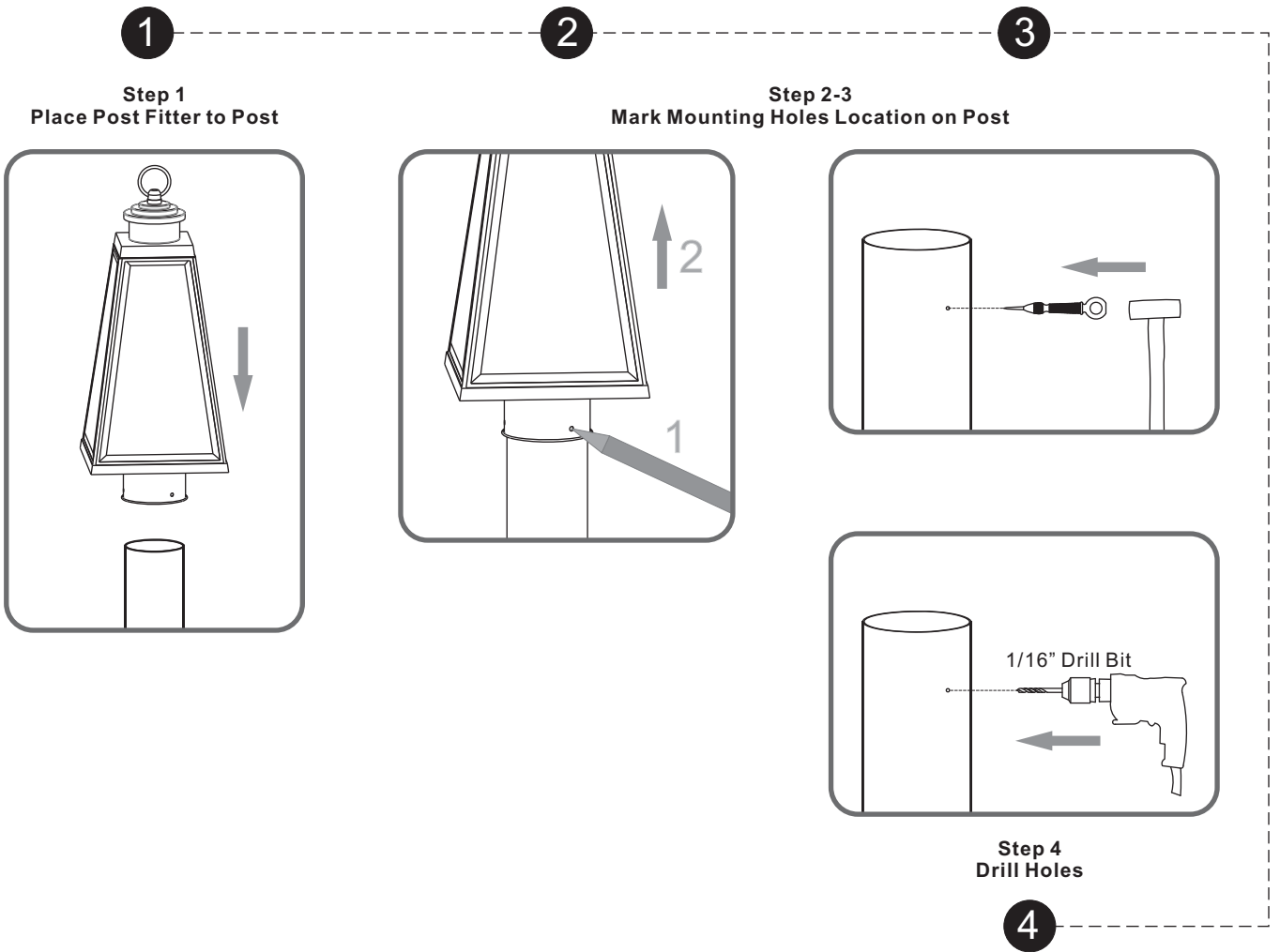
Table of Contents

Fixture Loop	Drill Holes	Wiring	Fixture Body	Bulb
				
STEP 1	STEP 2	STEP 3	STEP 4	STEP 5

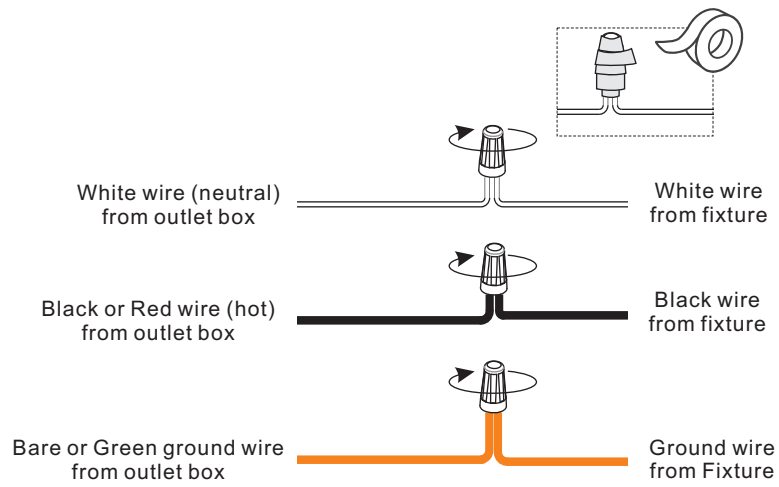
STEP 1



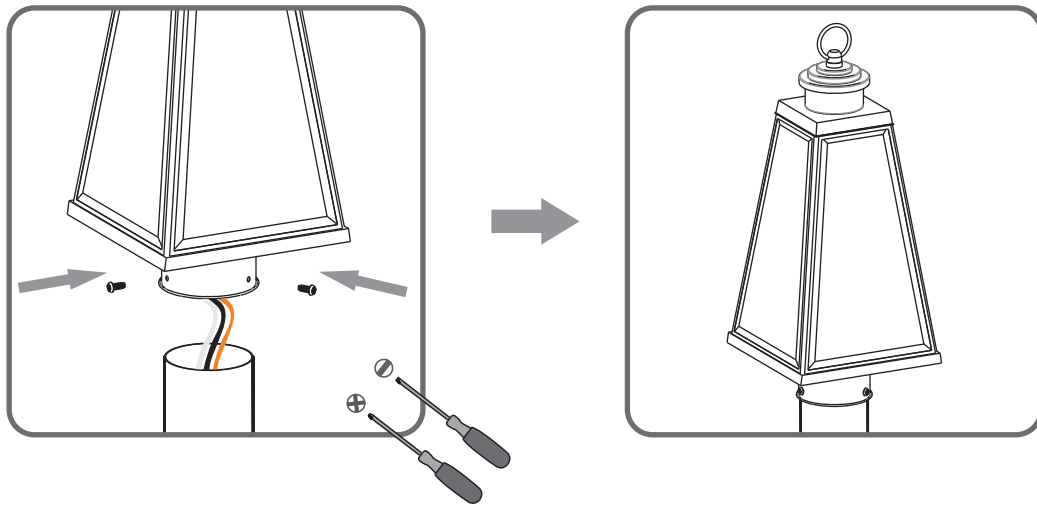
STEP 2



STEP 3



STEP 4



STEP 5

