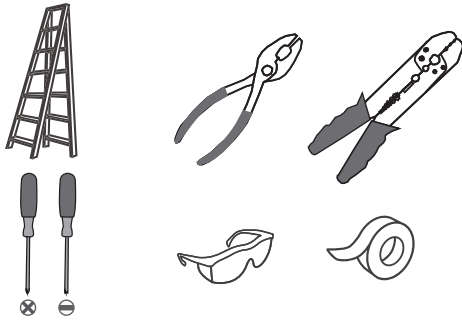
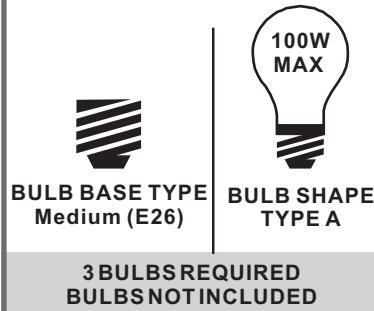


**Tools Required**



**Light Source**



**Warnings and Cautions**

Turn off the electricity at the circuit breaker before installation. Consult a licensed electrician if in doubt about installation.

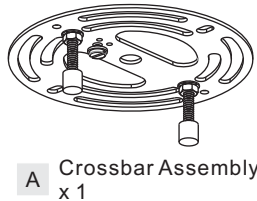
Turn off power to the fixture and allow the bulbs to cool before replacing.

**Package Contents**

**Preparation:** Identify and inspect all parts before beginning the installation.

Missing or damaged parts? Contact your original place of purchase.

**PARTS BAG**



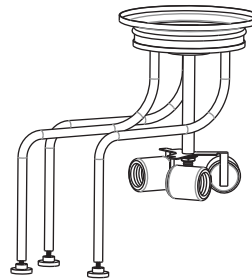
**A** Crossbar Assembly x 1



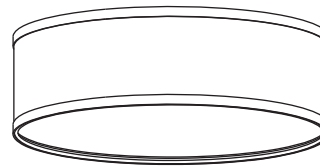
**B** Outlet Box Screw x 2



**C** Wire Connector x 3



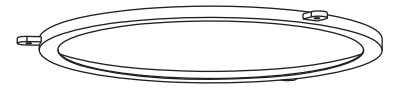
**D** Fixture Body x 1



**E** Shade x 1



**F** Diffuser x 1

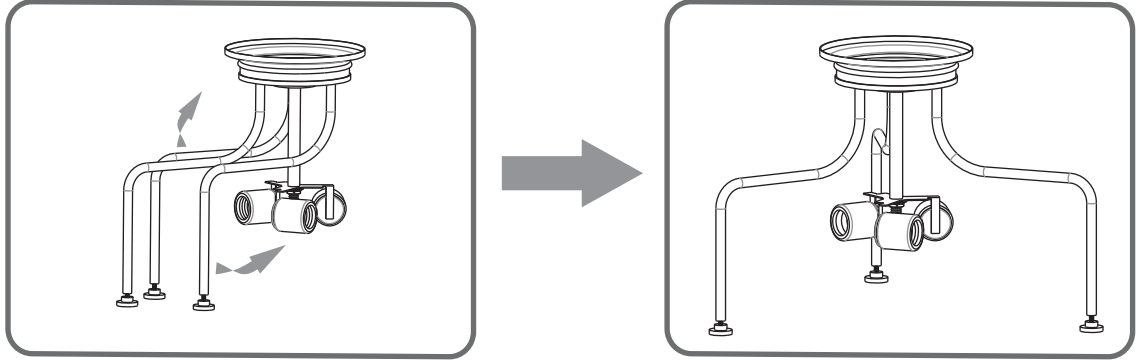


**G** Shade Holder x 1

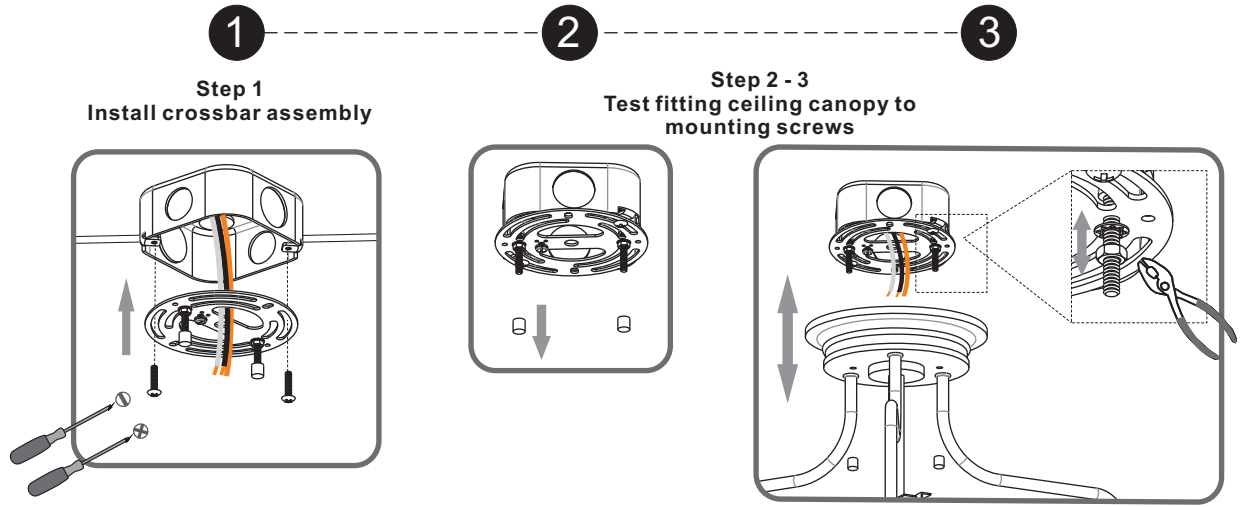
**Table of Contents**

Unfold Arms	Crossbar Assembly	Shade, Diffuser, Shade Holder	Wiring	Fixture Body	Bulb
<b>STEP 1</b>	<b>STEP 2</b>	<b>STEP 3</b>	<b>STEP 4</b>	<b>STEP 5</b>	<b>STEP 6</b>

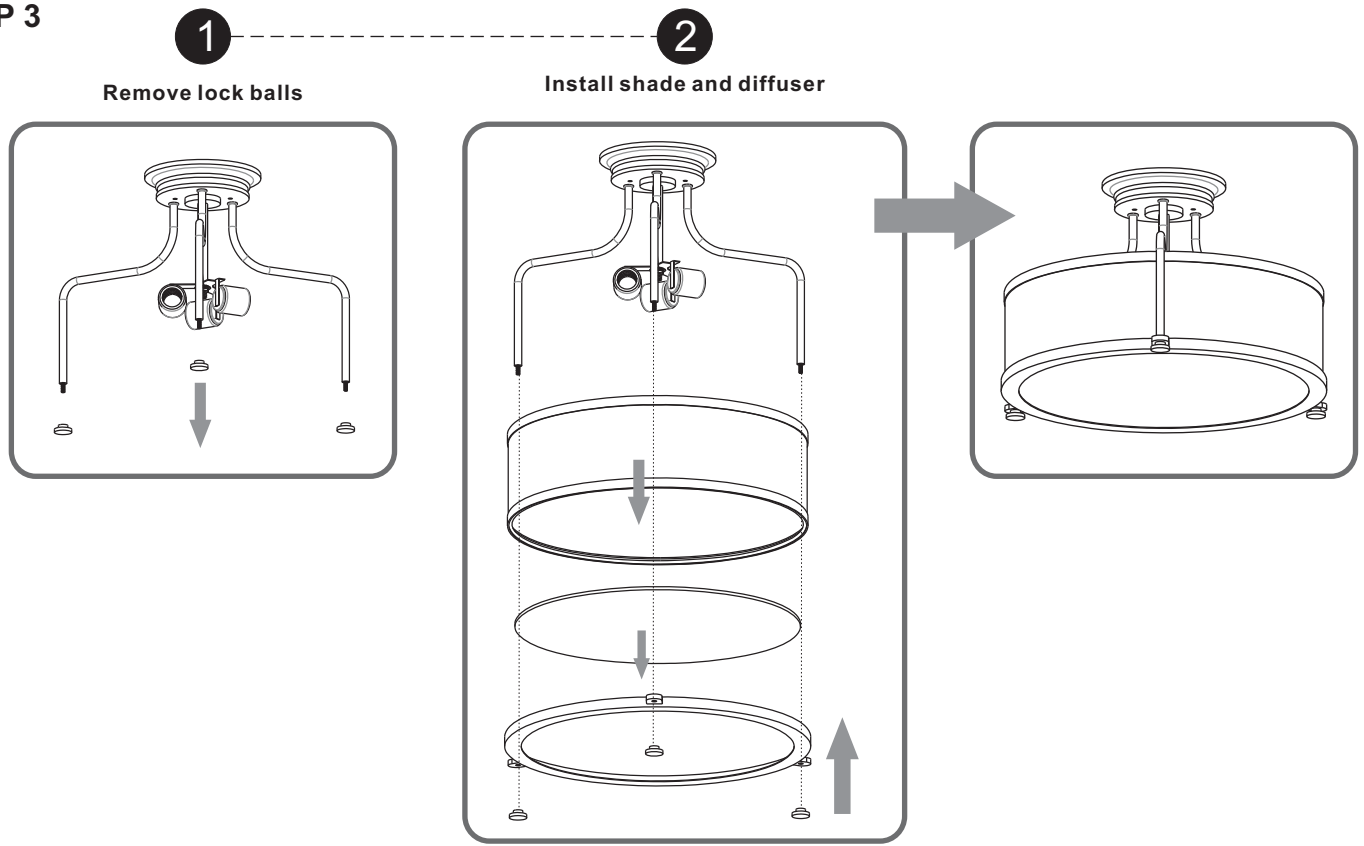
**STEP 1**



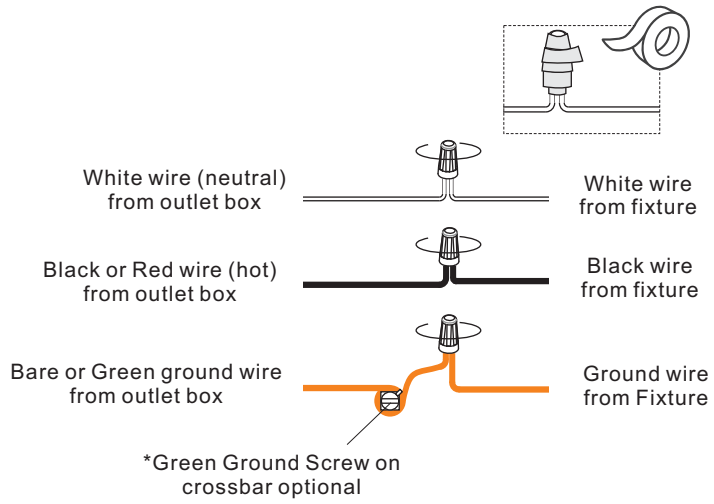
**STEP 2**



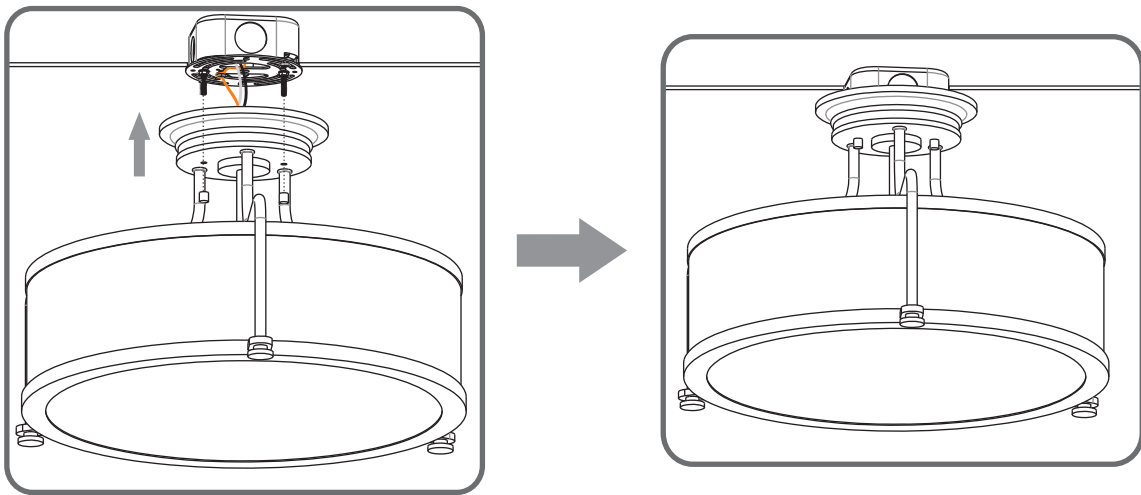
**STEP 3**



## STEP 4



## STEP 5



## STEP 6

