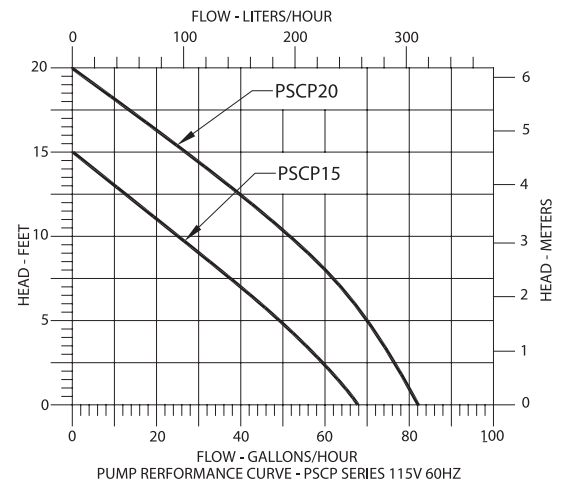
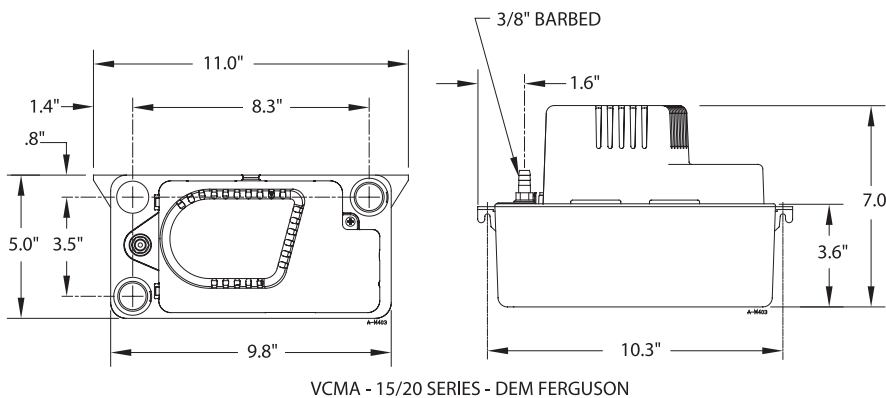


HVAC CONDENSATE REMOVAL SYSTEM

Series Specifications

- ABS tank, motor cover and volute
- 1/2 gal rust-proof ABS tank capacity
- Stainless steel shaft
- Automatic snap-action switch
- Removable 3/8" (9.5 mm) barbed check valve
- Reversible tank cover with 3 inlet drain holes for flexible installation
- Intermittent liquid temperature up to 140°F
- Thermal overload protection
- Includes 20' (6.1 m) of 3/8" ID (9.5 mm) tubing (PSCP15WS20T and PSCP20WS20T only)
- Safety switch
- 6' power cord with 3-prong molded plug

**PSCP15
PSCP15WS
PSCP15WS20T
PSCP20WS
PSCP20WS20T
PSCP20WS230**



Model	Listing(s)	HP	Volts	Hz	Amps	Running Watts	Gallons per Hour at Height				Shutoff	Weight (lbs)
							1'	5'	9'	15'		
PSCP15	UL/CSA	1/50	115	60	1	60	65	50	30	—	15'	4.4
PSCP15WS	UL/CSA	1/50	115	60	1	60	65	50	30	—	15'	4.4
PSCP15WS20T*	UL/CSA	1/50	115	60	1	60	65	50	30	—	15'	5.5
PSCP20WS	UL/CSA	1/30	115	60	1.5	73	80	70	55	25	20'	5.0
PSCP20WS20T*	UL/CSA	1/30	115	60	1.5	73	80	70	55	25	20'	5.0
PSCP20WS230	UL/CSA	1/30	230	50/60	0.5	75	80	70	55	25	20'	6.0

*Includes 20' of 3/8" ID vinyl tubing

Warranty and Codes

This PROSELECT product carries a 1-year limited warranty.
This product is NSF/ANSI Std. 61 compliant



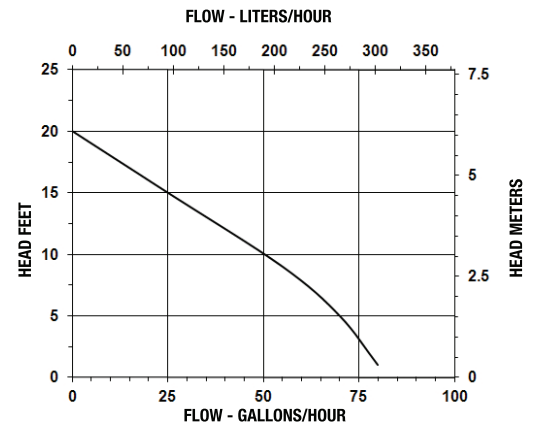
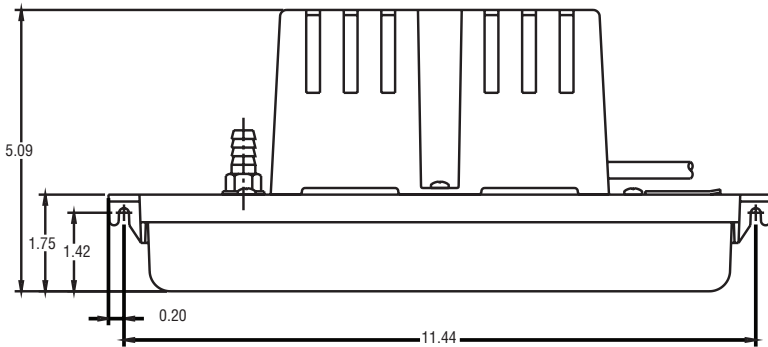
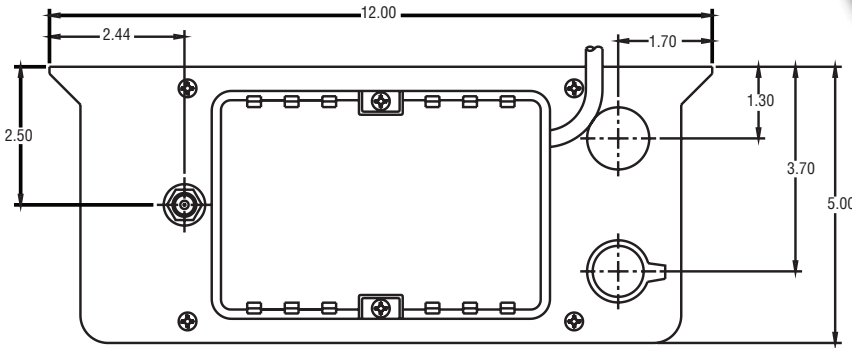


HVAC CONDENSATE REMOVAL SYSTEM

Series Specifications

- Low profile for limited space applications
- ABS tank, motor cover and volute
- 3/10 gal tank capacity
- Stainless steel shaft
- Removable 3/8" (9.5 mm) barbed check valve
- Thermal overload protection
- Safety switch
- 6' power cord with 3-prong molded plug

PSCP20LPWS



Item Number	Volts	Hertz	Amps	Watts	Gallons/Liters Per Hour at Height			Cord	Shutoff	Weight lbs/kg
					1' .3 m	3' .9 m	15' 4.6 m			
PSCP20LPWS	115	60	1.5	93	80 gph 303 lpm/5.0 lpm	70 gph 265 lpm/5.0 lpm	25 gph 95 lpm/1.6 lpm	6' 1.8m	20' 6.1m	5.4 2.5

Warranty and Codes

This PROSELECT product carries a 1-year limited warranty. This product is NSF/ANSI Std. 61 compliant



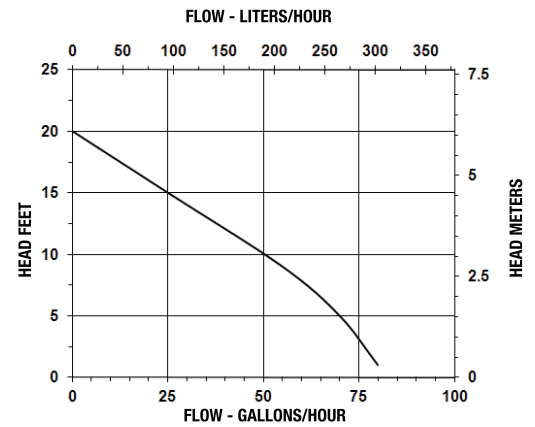
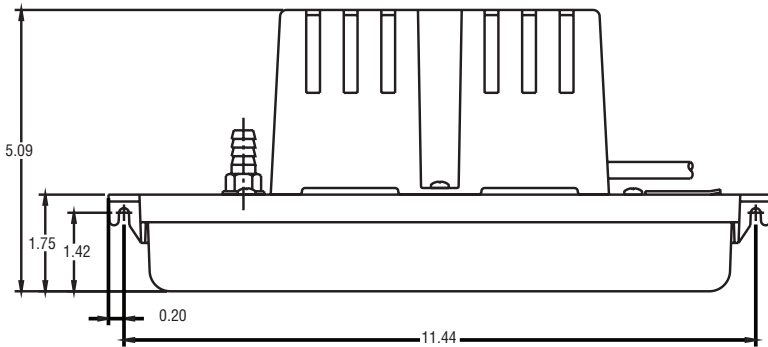
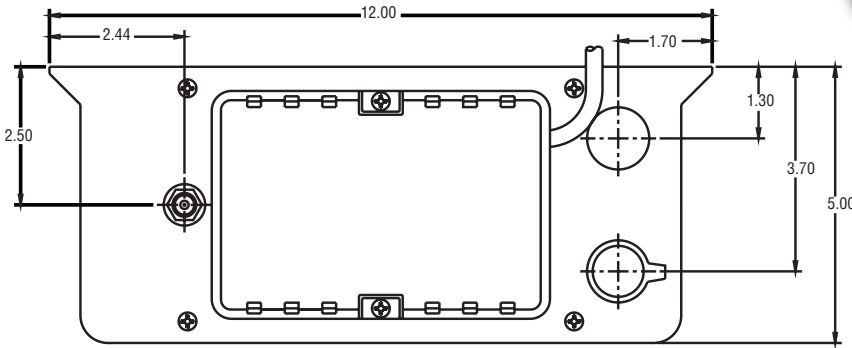
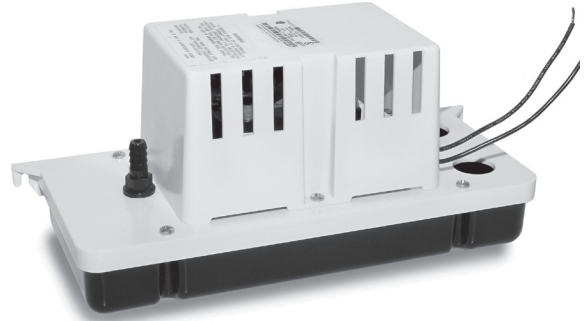


HVAC CONDENSATE REMOVAL SYSTEM

Series Specifications

- Low profile for limited space applications
- ABS tank, motor cover and volute
- 3/10 gal tank capacity
- Stainless steel shaft
- Removable 3/8" (9.5 mm) barbed check valve
- Thermal overload protection
- Safety switch
- 6' power cord with 3-prong molded plug

PSCP20LPWS



Item Number	Volts	Hertz	Amps	Watts	Gallons/Liters Per Hour at Height			Cord	Shutoff	Weight lbs/kg
					1' .3 m	3' .9 m	15' 4.6 m			
PSCP20LPWS	115	60	1.5	93	80 gph 303 lpm/5.0 lpm	70 gph 265 lpm/5.0 lpm	25 gph 95 lpm/1.6 lpm	6' 1.8m	20' 6.1m	5.4 2.5

Warranty and Codes

This PROSELECT product carries a 1-year limited warranty. This product is NSF/ANSI Std. 61 compliant

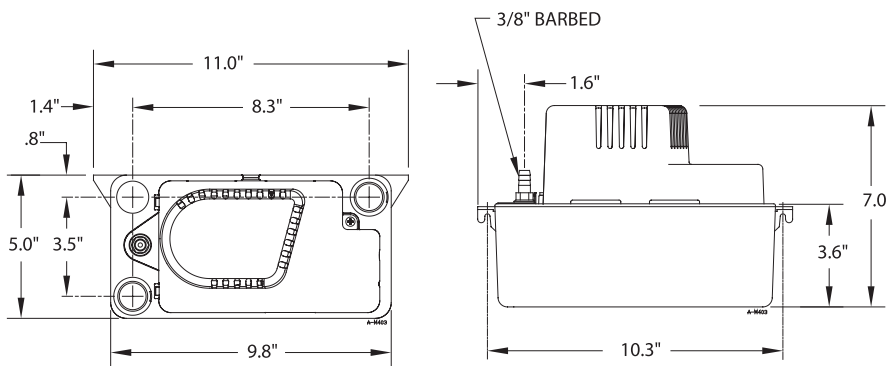
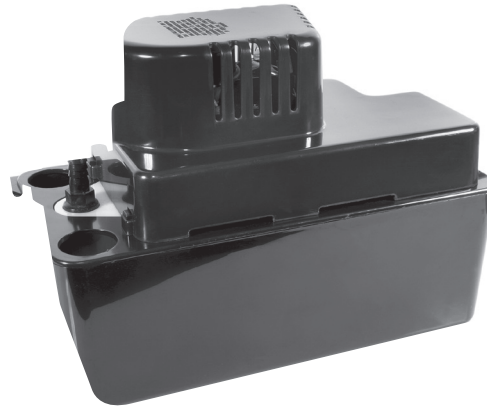


HVAC CONDENSATE REMOVAL SYSTEM

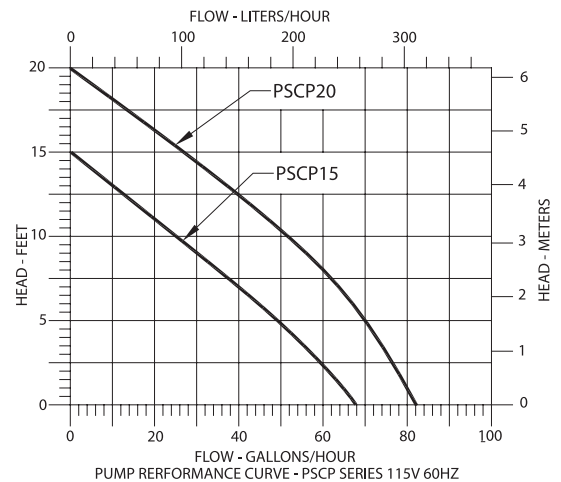
Series Specifications

- ABS tank, motor cover and volute
- 1/2 gal rust-proof ABS tank capacity
- Stainless steel shaft
- Automatic snap-action switch
- Removable 3/8" (9.5 mm) barbed check valve
- Reversible tank cover with 3 inlet drain holes for flexible installation
- Intermittent liquid temperature up to 140°F
- Thermal overload protection
- Includes 20' (6.1 m) of 3/8" ID (9.5 mm) tubing (PSCP15WS20T and PSCP20WS20T only)
- Safety switch
- 6' power cord with 3-prong molded plug

**PSCP15
PSCP15WS
PSCP15WS20T
PSCP20WS
PSCP20WS20T
PSCP20WS230**



VCMA - 15/20 SERIES - DEM FERGUSON



Model	Listing(s)	HP	Volts	Hz	Amps	Running Watts	Gallons per Hour at Height				Shutoff	Weight (lbs)
							1'	5'	9'	15'		
PSCP15	UL/CSA	1/50	115	60	1	60	65	50	30	—	15'	4.4
PSCP15WS	UL/CSA	1/50	115	60	1	60	65	50	30	—	15'	4.4
PSCP15WS20T*	UL/CSA	1/50	115	60	1	60	65	50	30	—	15'	5.5
PSCP20WS	UL/CSA	1/30	115	60	1.5	73	80	70	55	25	20'	5.0
PSCP20WS20T*	UL/CSA	1/30	115	60	1.5	73	80	70	55	25	20'	5.0
PSCP20WS230	UL/CSA	1/30	230	50/60	0.5	75	80	70	55	25	20'	6.0

*Includes 20' of 3/8" ID vinyl tubing

Warranty and Codes

This PROSELECT product carries a 1-year limited warranty.
This product is NSF/ANSI Std. 61 compliant



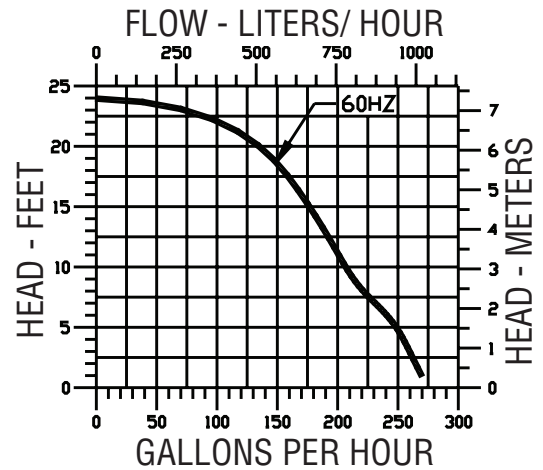
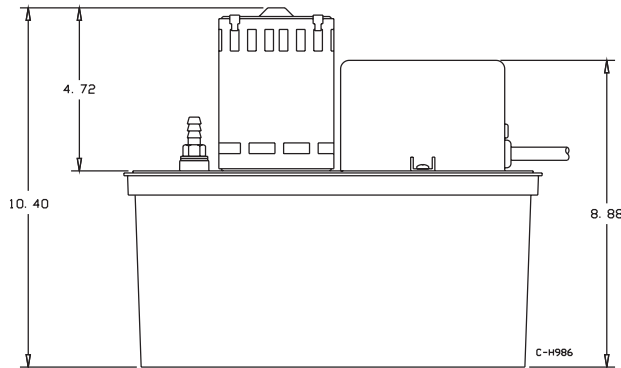
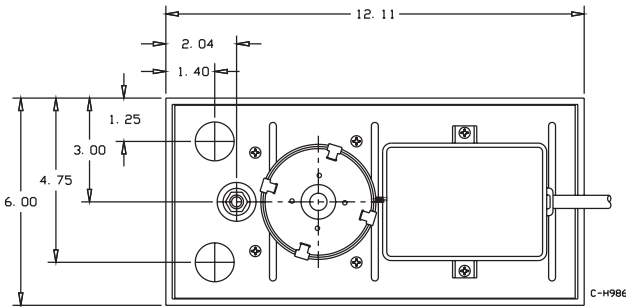


HVAC CONDENSATE REMOVAL SYSTEM

Series Specifications

- Galvanized steel tank cover
- ABS tank, volute and switch cover
- 1 gal tank capacity
- Stainless steel shaft
- Snap-action switch
- Safety switch
- Thermal overload protection
- 6' power cord with 3-prong molded plug

PSCP24WS



Item Number	Volts	Hertz	Amps	Watts	Gallons/Liters Per Hour at Height					Cord	Shutoff	Weight lbs/kg
					1' .3 m	3' .3 m	5' 1.5 m	7' .3 m	9' 2.75 m			
PSCP24WS	115	60	2.5	148	270 gph 1022 lpm	260 gph 984 lpm	250 gph 946 lpm	230 gph 871 lpm	210 gph 795 lpm	6' 1.83m	24' 7.32m	8.2 3.72

Warranty and Codes

This PROSELECT product carries a 1-year limited warranty.
 This product is NSF/ANSI Std. 61 compliant



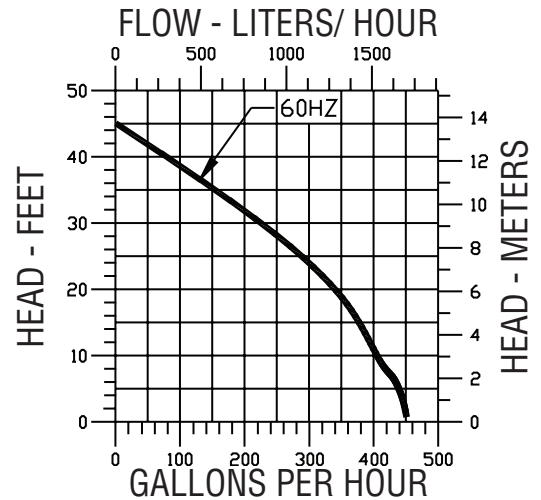
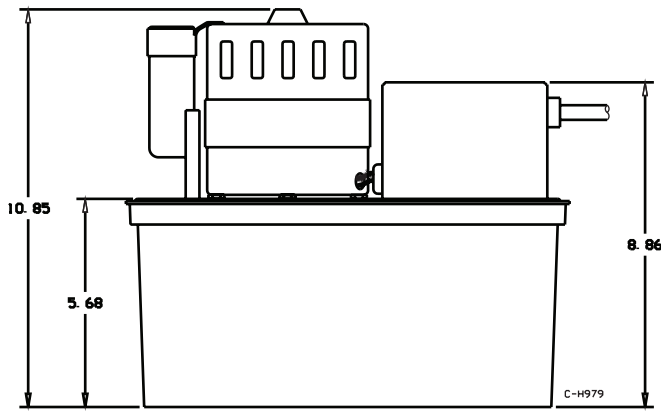
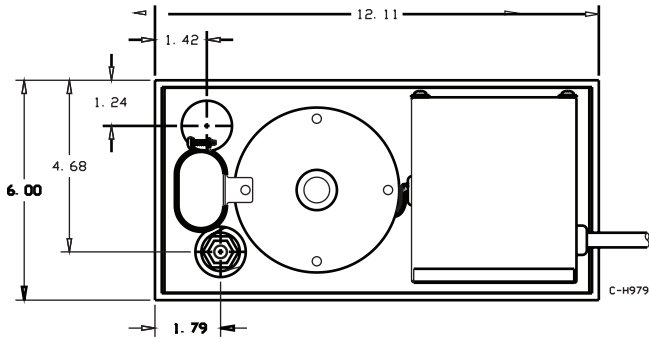
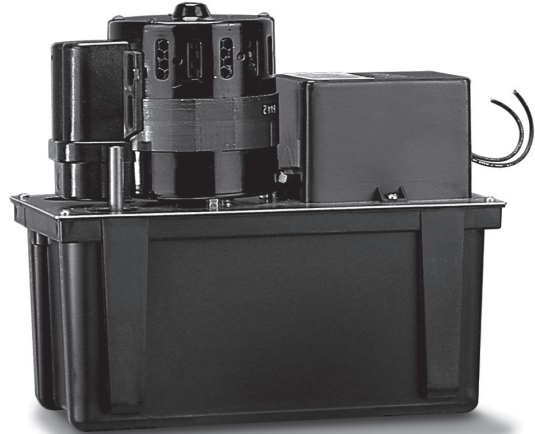


HVAC CONDENSATE REMOVAL SYSTEM

Series Specifications

- Galvanized steel tank cover
- ABS tank, volute and switch cover
- 1 gal tank capacity
- Stainless steel shaft
- Snap-action switch
- Safety switch
- Thermal overload protection
- 3/8" (9.5 mm) discharge copper tube
- 6' power cord with 3-prong molded plug

PSCP45WS



Item Number	Volts	Hertz	Amps	Watts	Gallons/Liters Per Hour at Height					Cord	Shutoff	Weight lbs/kg
					1' .3 m	3' .3 m	5' 1.5 m	7' .3 m	9' 2.75 m			
PSCP45WS	115	60	3.5	185	450 gph 1704 lpm	445 gph 1685 lpm	440 gph 1666 lpm	425 gph 1609 lpm	415 gph 1571 lpm	6' 1.83m	45' 13.7m	13 5.9

Warranty and Codes

This PROSELECT product carries a 1-year limited warranty.
This product is NSF/ANSI Std. 61 compliant





HVAC CONDENSATE REMOVAL SYSTEM

PSCP720FSS

Installs in the condensate drain pan of air conditioning or refrigeration units; reliable equipment shutdown when overflow conditions are detected.

Series Specifications

- Can install switch to activate audible and/or visual alarm
- ABS housing
- Polyethylene float
- Low voltage
- 72" leads
- Lead wires



Warranty and Codes

This PROSELECT product carries a 1-year limited warranty.
This product is NSF/ANSI Std. 61 compliant



HVAC CONDENSATE REMOVAL SYSTEM

Removes condensate from wall-mounted, ceiling and cassette split system air conditioning.

Series Specifications

- For intermittent operation, maximum 50% duty cycle
- Condensate produced in application must be no more than half the pump's flow rate for any given head
- Use with most mini-split air conditioning units up to 25,000 BTU/hr
- Self-priming pump can be placed up to 3' (.9 m) above reservoir
- Kit includes suction tubing, vent tubing, drain tubing, tubing adaptor and safety switch

PSCPMS115
PSCPMS230



Warranty and Codes

This PROSELECT product carries a 1-year limited warranty.
This product is NSF/ANSI Std. 61 compliant

HVAC CONDENSATE REMOVAL SYSTEM

Removes condensate from wall-mounted, ceiling and cassette split system air conditioning.

Series Specifications

- For intermittent operation, maximum 50% duty cycle
- Condensate produced in application must be no more than half the pump's flow rate for any given head
- Use with most mini-split air conditioning units up to 25,000 BTU/hr
- Self-priming pump can be placed up to 3' (.9 m) above reservoir
- Kit includes suction tubing, vent tubing, drain tubing, tubing adaptor and safety switch



PSCPMS115
PSCPMS230

Warranty and Codes

This PROSELECT product carries a 1-year limited warranty.
This product is NSF/ANSI Std. 61 compliant



HVAC CONDENSATE REMOVAL SYSTEM

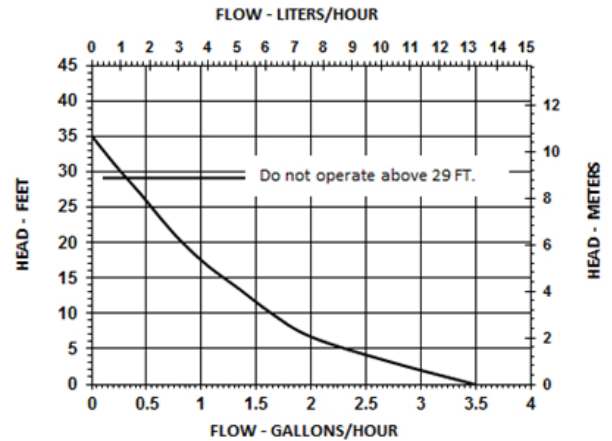
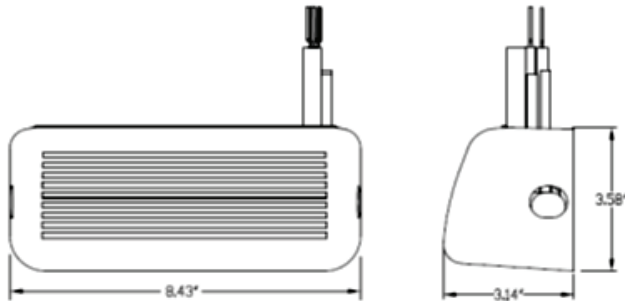
PSCPMSOP230

Series Specifications

- Removes condensate from wall mount air conditioners up to 34,000 BTU
- Mounts on wall underneath air handler
- Clear, extra-large reservoir for easy, visual inspection
- Safety alarm ready
- Easy to install under wall mount air handler using included mounting bracket
- Easy-to-remove cover hides pump
- Easy to service
- Quieter than most mini-split A/C condensate pumps
- Requires no tools to service
- Includes 5/16" inlet tubing and universal-fit drain hose adapter
- Includes 5/32" discharge tubing with 1/4" ID tubing adapter
- 6' power and safety overflow connection cables



Model	Listing(s)	Volts	Hz	Amps	Running Watts	Performance GPH @ Height						Shutoff	PSI	Weight (lbs)
						2'	4'	6'	8'	12'	20'			
PSCPMSOP230	cCSAus	230V	50/60	0.1	20	3.6	3.3	3.0	2.7	2.0	1.2	34.8'	15.2	3.0



Warranty and Codes

This PROSELECT product carries a 1-year limited warranty.

