

Project: \_\_\_\_\_

Fixture Type: \_\_\_\_\_

Location: \_\_\_\_\_

Contact: \_\_\_\_\_

## P400226-009 Chadwick

Stick with simple geometric forms and clean crisp lines with this modern wall bracket. Beautiful opal glass shades visually calm the sharp edges of the boxy frame in a masterful stroke of design excellence. The frame is coated in a classic brushed nickel finish that contrasts the light shades. The light fixture is just right for spaces in need of a subtle, feminine touch.

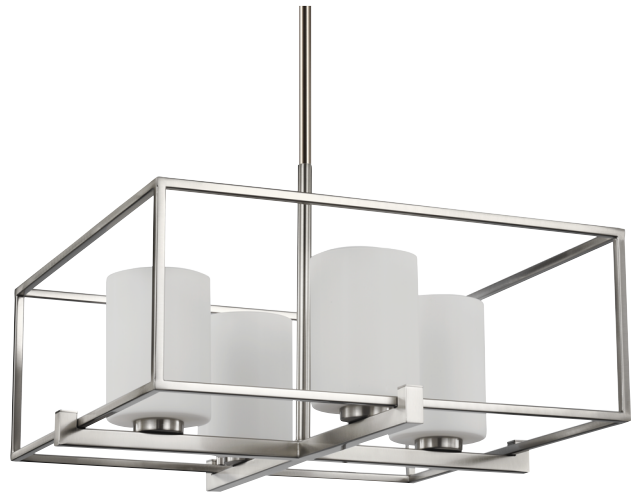
- Beautiful opal glass shades visually calm the sharp edges of the boxy frame in a masterful stroke of design excellence.
- The frame is coated in a classic brushed nickel finish that contrasts the light shades.
- The light fixture is just right for spaces in need of a subtle, feminine touch.
- Ideal for any dining room or kitchen.
- Perfect for transitional, modern, and contemporary settings.
- Measures 21-5/8-inch width by 12-7/8-inch height.
- Uses four medium base bulbs that are sold separately (100w max - LED or incandescent).
- Able to be fully dimmable with dimmable bulbs.
- Includes installation instructions and mounting hardware.
- Progress Lighting products are designed for exceptional quality, reliability, and functionality.

**Category:** Chandeliers

**Finish:** Brushed Nickel (Plated)

**Construction:** Steel Construction

**Glass/Shade:** Etched Opal glass Cylindrical Shade



Square: 21-5/8 in  
Height: 12-7/8 in  
Overall Ht. W/Stem: 70 in

Etched Opal glass Cylindrical Shade  
Width: 4-5/16 in  
Height: 6-1/8 in

MOUNTING	ELECTRICAL	LAMPING	ADDITIONAL INFORMATION
Ceiling stem hung with swivel mounted	Prewired	Quantity:	CULus Dry Location Listed
Mounting plate for outlet box included	15 feet of wire supplied	Four 100 W max. Medium Base or LED equivalent	1-year Limited Warranty
One 6", four 12" lengths of stem included	120 V	E26 base Porcelain sockets	
Canopy covers a standard 4" recessed outlet box: 4.5" W., 0.812" ht., 4.5" depth			