

Project: \_\_\_\_\_

Fixture Type: \_\_\_\_\_

Location: \_\_\_\_\_

Contact: \_\_\_\_\_

**Product #:**

PHGH Series  
Glass Wallpacks

**Specifications:**

**Description:**

**INTENDED USAGE**

- Perimeter lighting for safety and security. Use on factories, warehouses, self storage, commercial buildings, etc.

**CONSTRUCTION**

- Borosilicate glass refractor softens lamp image and provides uniform distribution – 4 times spacing to mounting height.
- Cast aluminum frame holds lens and seals to housing gasket with two stainless steel screws.
- Door assembly hinges to side on mid-size units; hinges down on large units
- Cast aluminum housing with 1/2" conduit entries, button photocontrol can be field installed
- All units have dark bronze powder paint finish, Quad-Tap® ballasts and lamps included

**ELECTRICAL**

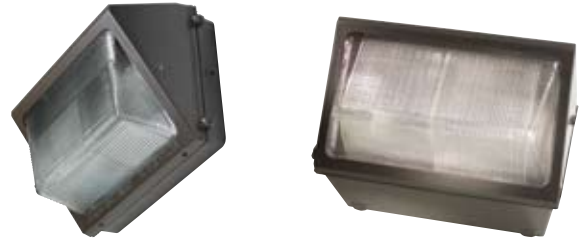
- WGH mid-size is 150w HPS/PS and 84w CFL; large size handles 250-400w PS and HPS; 150P unit includes medium base lamp; All other HID units include mogul base lamp
- 84w (2x42wCFL) is available with 180° motion sensor factory wired to control one lamp providing 50% energy savings

**LISTINGS**

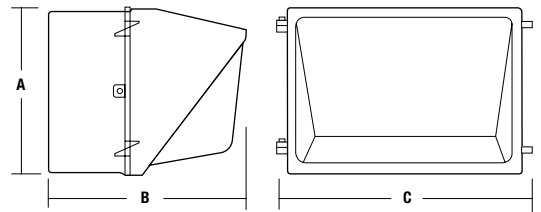
- Listed to UL 1598 for use in wet locations



**Images:**



**Dimensions:**



	A	B	C	D	E
<b>MID-SIZE</b>	9"	7 1/4"	13"	6.5"	2.5"
	229 mm	184 mm	330 mm	165mm	63.5mm
<b>LARGE</b>	9"	13"	17"	-	-
	229 mm	330 mm	432 mm	-	-

**Catalog number:**

Catalog Number <sup>1</sup>	Wattage/Source	Voltage	Finish	Weight	
				lbs	kg
<b>MID-SIZE SERIES</b>					
PHGH-150P-B	150w/PS	120, 208, 240, 277V	Bronze	19	8.6
PHGH-100P-B	100w/PS	120, 208, 240, 277V	Bronze	11	4.9
<b>LARGE SERIES</b>					
PHGH-250P-B	250w/PS	120, 208, 240, 277V	Bronze	34	15.4

<sup>1</sup> Lamp included on all units.  
<sup>2</sup> Lamps are 3500K 4-Pin (single two lamp ballast).  
<sup>3</sup> Unit has individual lamp ballasts, lamps are 3500K, can be easily wired for motion control of both lamps if desired. Sensor has 180° detection range with adjustable time-on and sensitivity settings.