



LED

# 4" Pro-Optic® LED New Construction Downlight 120-277V 0-10V Dimming

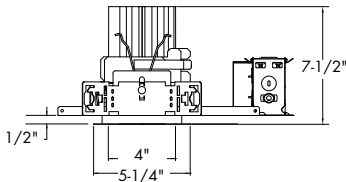
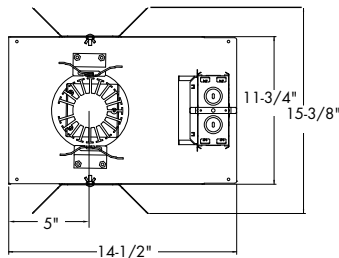
Recessed

Type \_\_\_\_\_  
-EB  
P8064

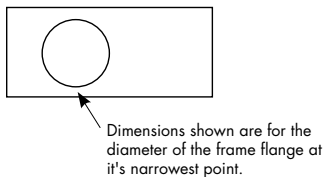
All Items **MTO**

Ceiling Cutout: see guide

Maximum Ceiling Thickness: 1-1/4"



Notes:  
To order proper housing:  
1. Measure existing plaster frame aperture  
2. Use Compatibility Guide for selecting hsg



Dimensions shown are for the diameter of the frame flange at its narrowest point.

LED Housing Catalog No.	Description	Lamping
P8064-EB	4" LED New Construction 120 - 277V Housing	

LED Trim Catalog No.	Reflector Finish	LED Color Temp
<input type="checkbox"/> P8067 4" 1100 lm module	<input type="checkbox"/> -21A Clear Alzak®	<input type="checkbox"/> /30K 3000 Kelvin
<input type="checkbox"/> P8206 4" 2000 lm module	<input type="checkbox"/> -22A Gold Alzak®	<input type="checkbox"/> /35K 3500 Kelvin
	<input type="checkbox"/> -28 White	<input type="checkbox"/> /40K 4000 Kelvin

Example: P8067-21A/30K (Ordered separately)

### Specifications:

#### General

- 4" commercial grade LED downlight utilizing remote phosphor technology to obtain color consistency, energy savings, and low maintenance costs
- 50,000 hours minimum life up to 35°C (95° F) in open plenum applications

#### Housing

- One-piece 22 gauge non-corrosive steel platform
- Pre-wired J-box with snap-on cover for easy access
- Snap-in connection from driver compartment allows easy installation of light engine/trim assembly without tools above or below the ceiling and can be upgraded to accommodate technology improvements
- Approved for 8 (4 in/4 out) No. 12 AWG conductors rated for 90°C through wiring

#### Reflector

- High purity aluminum Alzak, iridescence suppressed, semi-diffuse reflector
- Self-flanged trim standard
- White painted self-flanged trim (-28) option available

#### LED Light Engine

- The P8064 uses the Philips Fortimo DLM LED Module with remote phosphor technology.

This technology provides controlled color consistency from fixture to fixture

- The system is designed for optimal life and lumen maintenance (50,000 hours at 70% lumen maintenance)
- Both reflector and light engine assembly are mechanically retained to housing. The light engine comes standard with 80 CRI for all CCT's

#### LED Driver

- Driver is designed to match the 50,000 hour minimum life expectancy of the system
- Meets UL Class 2, inherent short circuit protection, self limited, overload protected
- Integrated thermal feedback loop will gradually reduce current to protect system life
- Universal driver 120V-277V

#### Dimming

- Flicker-free 0 – 10V dimming to 10%

#### Labeling

- cCSAus certified to US and Canadian standards
- Suitable for wet locations
- 5 year warranty

Progress Lighting  
701 Millennium Blvd.  
Greenville, South Carolina  
29607

www.progresslighting.com



LED

**4" Pro-Optic® LED**  
**New Construction Downlight**  
**P8064/P8067/P8206**

**Recessed**

DRIVER DATA	P8067 30K	P8067 35K	P8067 40K	P8206 30K	P8206 35K	P8206 40K
Input Voltage	120 - 277V	120 - 277V	120 - 277V	120 - 277V	120 - 277V	120 - 277V
Input Frequency	50 / 60 Hz	50 / 60 Hz	50 / 60 Hz	50 / 60 Hz	50 / 60 Hz	50 / 60 Hz
Input Current	0.146A (120V) 0.063 (277V)	0.156A (120V) 0.067 (277V)	0.137A (120V) 0.059 (277V)	0.30A (120V) 0.13 (277V)	0.28A (120V) 0.12 (277V)	0.28A (120V) 0.12 (277V)
Input Power	17.3W	18.5W	16.3W	36W	34W	33W
Constant Current Output	200 – 700 mA	200 – 700 mA	200 – 700 mA	200 – 700 mA	200 – 700 mA	200 – 700 mA
Power Factor	≥0.90	≥0.90	≥0.90	≥0.90	≥0.90	≥0.90
THD	<20%	<20%	<20%	<20%	<20%	<20%
EMI Filtering	FCC 47CFR Part15, Class A	FCC 47CFR Part15, Class A	FCC 47CFR Part15, Class A	FCC 47CFR Part15, Class A	FCC 47CFR Part15, Class A	FCC 47CFR Part15, Class A
Operating Temperature	-20°C to 55°C	-20°C to 55°C	20°C to 55°C	-20°C to 55°C	20°C to 55°C	-20°C to 55°C
Dimming	0-10V	0-10V	0-10V	0-10V	0-10V	0-10V

Dimming 0-10V 100% to 10%

Pro-Optic LED driver is compatible with 0-10V type dimming controls. Recommended dimming controls are listed below.

Control Manufacturer	Wallbox Dimmer	Power Booster Available
Douglas Lighting controls	WPC 5721	
Entertainment Technology	Tap Glide TG600FAM120 (120V) Tap Glide Heatsink TGH1500FAM120 (120V) Oasis OA2000FAMU (120/277V)	
Honeywell, Inc.	EL 7315A1019 and EL7315A1009	EL7305A1010
HUNT Dimming	Preset Slide: PS-010-IV-120V and PS-010-WH-120V Preset Slide: PS-010-3W-IV-120V and PS-010-3W-WH-120V Preset Slide: PS-010-IV-277V and PS-010-WH-277V Preset Slide: PS-010-3W-IV-277V and PS-010-3W-WH-277V Preset Slide, controls FD-010: PS-IFC-010-IV- and PS-IFC-010-WH-120/277V Preset Slide, controls FD-010: PS-IFC-010-3W-IV- and PS-IFC-010-3W-WH-120/277V Remoted mounted unit: FD-010-120V and FD-010-277V	
Lehigh Electric Products Co.	Solitaire	PBX
Leviton Lighting Controls Div.	Leviton Centura Fluorescent Control System IllumaTech™ IP7 Series	CN100 PE300
Lutron Electronics Co., Inc.	Visit <a href="http://www.lutron.com/advance">www.lutron.com/advance</a> for the latest control information and selection	
PDM Electrical products	WPC-5721	
Starfield Controls	TR61 with DALI interface port	RT03 DAL Inet router
The Watt Stopper, Inc.	LS4 used with LCD-101 and LCD-103	





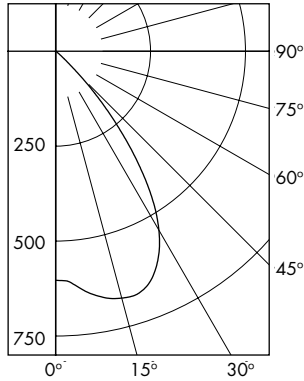
LED

**4" Pro-Optic® LED**  
**New Construction Downlight**  
**P8064/P8067/P8206**

**Recessed**

**P8064-EB P8067-21A/35K**

LED Light Engine: 3500K, 80 CRI  
 System Wattage: 17.3W  
 Fixture Delivered Lumens: 877  
 Fixture Efficacy: 51  
 Spacing Criteria: 1.2



CANDELA DISTRIBUTION		
DEG	CANDELA	LUMENS
0	603	
5	620	60
15	673	191
25	627	287
35	412	253
45	94	78
55	5	6
65	2	1
75	0	0
85	0	0
90	0	

Test No. 3739  
 Tested at 25°C Ambient in accordance to IESNA LM-79-2008

**ZONAL LUMEN SUMMARY**

ZONE	LUMENS	%LUMINAIRE
0-30	538	61.3
0-40	791	90.2
0-60	875	99.8
0-90	877	100.0
90-180	0	0.0
0-180	877	100.0

**LUMINANCE DATA IN CANDELA/SQ. METER**

Angle in Vertical	Average - 0°
45°	16391
55°	1075
65°	584
75°	0
85°	0

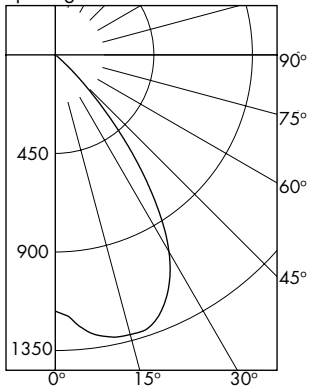
**COEFFICIENTS OF UTILIZATION**

Room Cavity Ratio	% Effective Ceiling Cavity Reflectance																				
	80%				70%				50%				30%				10%				
	70	50	30	10	70	50	30	10	70	50	30	10	70	50	30	10	70	50	30	10	
1	113	110	108	105	111	108	106	104	104	102	101	100	99	98	97	96	95				
2	107	102	98	94	105	100	96	93	97	94	91	94	91	89	91	89	87				
3	101	94	89	85	99	93	88	84	90	86	83	88	85	82	86	83	80				
4	96	88	82	77	94	86	81	77	84	80	76	82	78	75	80	77	74				
5	90	81	75	71	89	80	75	70	79	73	70	77	72	69	75	71	68				
6	85	76	69	65	84	75	69	64	73	68	64	72	67	64	71	66	63				
7	80	71	64	60	79	70	64	59	69	63	59	67	62	59	66	62	58				
8	76	66	59	55	75	65	59	55	64	59	55	63	58	54	62	58	54				
9	72	62	55	51	71	61	55	51	60	55	51	59	54	51	58	54	50				
10	68	58	52	47	67	57	51	47	56	51	47	56	51	47	55	50	47				

P8064-EB P8067-21A/35K Test No. 3739

**P8064-EB P8206-21A/35K**

LED Light Engine: 3500K, 80 CRI  
 System Wattage: 32.9W  
 Fixture Delivered Lumens: 1673  
 Fixture Efficacy: 50  
 Spacing Criteria: 1.1



CANDELA DISTRIBUTION		
DEG	CANDELA	LUMENS
0	1170	
5	1242	120
15	1322	375
25	1208	552
35	766	472
45	172	141
55	9	10
65	3	2
75	1	1
85	1	0
90	0	

Test No. 4149  
 Tested at 25°C Ambient in accordance to IESNA LM-79-2008

**ZONAL LUMEN SUMMARY**

ZONE	LUMENS	%LUMINAIRE
0-30	1047	62.6
0-40	1519	90.8
0-60	1670	99.8
0-90	1673	100.0
90-180	0	0.0
0-180	1673	100.0

**LUMINANCE DATA IN CANDELA/SQ. METER**

Angle in Vertical	Average - 0°
45°	13330
55°	860
65°	389
75°	212
85°	629

**COEFFICIENTS OF UTILIZATION**

Room Cavity Ratio	% Effective Ceiling Cavity Reflectance																				
	80%				70%				50%				30%				10%				
	70	50	30	10	70	50	30	10	70	50	30	10	70	50	30	10	70	50	30	10	
1	113	110	108	105	111	108	106	104	104	102	101	100	99	98	97	96	95				
2	107	102	98	94	105	100	97	93	97	94	91	94	92	89	91	89	87				
3	101	95	89	85	99	93	88	85	91	87	83	88	85	82	86	83	81				
4	96	88	82	78	94	87	81	77	85	80	76	82	78	75	81	77	74				
5	91	82	75	71	89	81	75	71	79	74	70	77	73	69	76	72	69				
6	86	76	70	65	84	75	69	65	74	68	64	72	68	64	71	67	64				
7	81	71	65	60	79	70	64	60	69	64	60	68	63	59	67	62	59				
8	76	66	60	56	75	66	60	55	65	59	55	64	59	55	63	63	55				
9	72	62	56	52	71	62	56	51	61	55	51	60	55	51	59	59	51				
10	69	58	52	48	68	58	52	48	57	52	48	56	51	48	55	55	47				

P8064-EB P8206-21A/35K Test No. 4149v

