

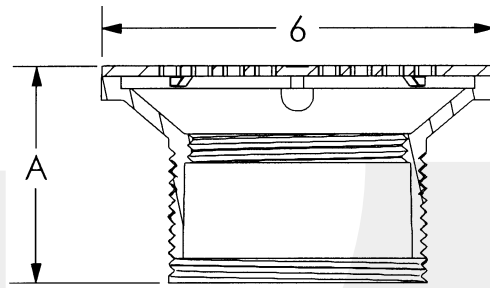


**SUBMITTAL SPECIFICATION**

**Engineering Specification:** ProFlo general purpose floor drains are used for general service in restaurants, restrooms and other commercial applications where traffic is expected. Barrel assembly is completely adjustable to meet the finished floor height.

Job Reference

**Adjustable Drain Tops Without Rings**



• Barrel diameter is 3-1/2 in. IPS thread.

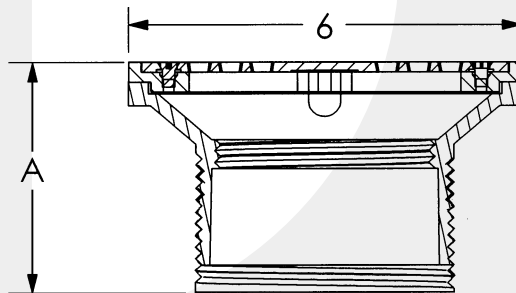
✓	Socket Size	Grate Finish	Part Number
	3 1/2 in. IPS Plastic Barrel With 6 in. Grate	Stainless	PF42847
	3 1/2 in. IPS Plastic Barrel With 6 in. Grate	Brass	PF42846
	3 1/2 in. IPS Plastic Barrel With 6 in. Grate	Nickel	PF42889
	3 1/2 in. IPS Plastic Barrel With 6 in. Grate	Chrome	PF42845

Dimensional Data	
A	
3.00 in.	

Grate Properties		
Finish	Open Area	Load*
300 Series Stainless Steel	7.10 in. <sup>2</sup>	Light
Brass	7.10 in. <sup>2</sup>	Medium
Nickel	7.10 in. <sup>2</sup>	Medium
Chrome	7.10 in. <sup>2</sup>	Medium

\*Load is defined by ASME A112.21.1M-1991.  
 Light Duty – Safe live load under 2000 lbs.  
 Medium Duty – Safe live load between 2000 lbs. and 4999 lbs.

**Adjustable Drain Tops With Rings**



• Barrel diameter is 3-1/2 in. IPS thread.

✓	Socket Size	Grate Finish	Part Number
	3 1/2 in. IPS Plastic Barrel With 5 3/4 in. Grate with 6 in. Metal Ring	Brass	PF42848
	3 1/2 in. IPS Plastic Barrel With 5 3/4 in. Grate with 6 in. Metal Ring	Nickel	PF42890

Dimensional Data	
A	
3.25 in.	

Grate Properties		
Finish	Open Area	Load*
Brass	9.59 in. <sup>2</sup>	Medium
Nickel	9.59 in. <sup>2</sup>	Medium

\*Load is defined by ASME A112.21.1M-1991.  
 Light Duty – Safe live load under 2000 lbs.  
 Medium Duty – Safe live load between 2000 lbs. and 4999 lbs.

Data is subject to manufacturing tolerances.



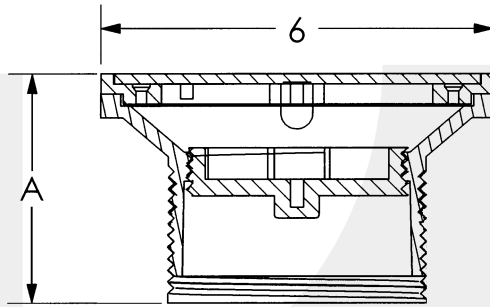
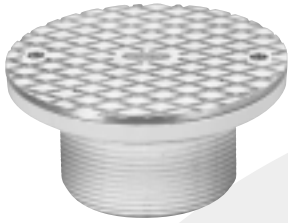
©2001 Marketfocus Communications, Inc.

**SUBMITTAL SPECIFICATION**

**Engineering Specification:** ProFlo adjustable floor cleanouts are used for general service in restaurants, restrooms and other commercial applications where traffic is expected. Barrel assembly is completely adjustable to meet the finished floor height.

Job Reference

**Cleanouts**



• Barrel diameter is 3-1/2 in. IPS thread.

✓	Socket Size	Cover Finish	Part Number
	3 1/2 in. IPS Plastic Barrel With 6 in. Cover	Brass	PF42816
	3 1/2 in. IPS Plastic Barrel With 5 3/4 in. Brass Cover With 6 in. Metal Ring	Brass	PF42817

Dimensional Data	
<b>A</b>	
3.25 in.	

Cover Properties	
Finish	Load*
Brass	Medium

\*Load is defined by ASME A112.21.1M-1991.  
 Light Duty – Safe live load under 2000 lbs.  
 Medium Duty – Safe live load between 2000 lbs. and 4999 lbs.

Data is subject to manufacturing tolerances.