

# Enameled Steel Soaking Tubs

## 60" x 30"

### S2-Series



#### Product Features

- Chemically Bonded enameled steel bathtub
- 60" x 30" x 14-1/4"
- 60" x 30" x 16-5/8" AFR
- High-density molded backing deadens noise, retains heat and resists impact damage
- Full length tile flange
- Standard and above floor rough-in
- High gloss, stain resistant porcelain finish
- Non-skid bottom surface
- Available in white, bone, biscuit
- Integral molded leveling feet
- Weight: 90 lbs



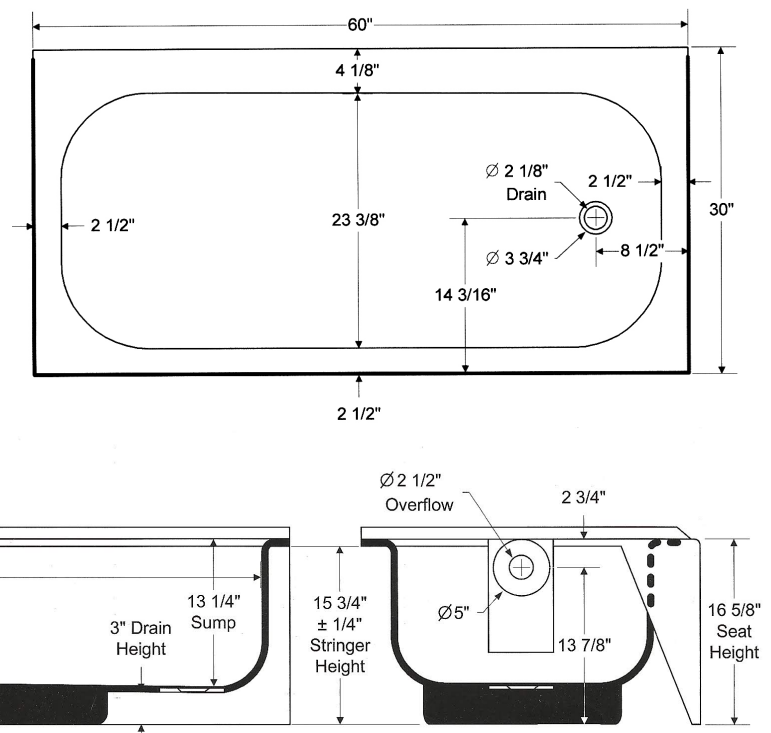
**PFB14RS2WH**

#### Model Numbers

- PFB14RS2** 60" x 30" x 14-1/4" bathtub - RH
- PFB14LS2** 60" x 30" x 14-5/8" bathtub - LH
- PFB16RS2** 60" x 30" x 16-5/8" bathtub - RH above floor RI
- PFB16LS2** 60" x 30" x 16-5/8" bathtub - LH above floor RI

#### Available Colors

- White (WH)
- Bone (BO)
- Biscuit (BS)



#### Warranty and Codes

These products come complete with installation, operating, care and maintenance instructions. PROFLO S2 Series Enameled Steel baths carry a limited lifetime warranty. These products meet or exceed ASME/ANSI A112.19.4M.

