

PF1807

Rear Outlet Urinal Siphon-jet



Product Features

- Vitreous china
- Siphon jet flushing (1.0 gpf/3.8 Lpf)
- 3/4" top inlet spud
- Integral flushing rim
- Integral trap
- Hanging brackets included
- Flush valve not included



PF1807WH

Codes and Standards

- ADA
- IAPMO/UPC
- ASME A112.19.2
- CSA

Technical Information

Fixture:	
Configuration	siphon-jet urinal, rear outlet
Water per flush	1.0 gpf/3.8 lpf
Spud size	3/4" top
Passageway	2" female outlet
Water area	
Water depth from rim	
Seat post hole centers	NA

Included Components

- Mounting brackets

Specified Model

Model	Model Description	Color Finishes
PF1807	Siphon-jet 3/4" top spud	○ White



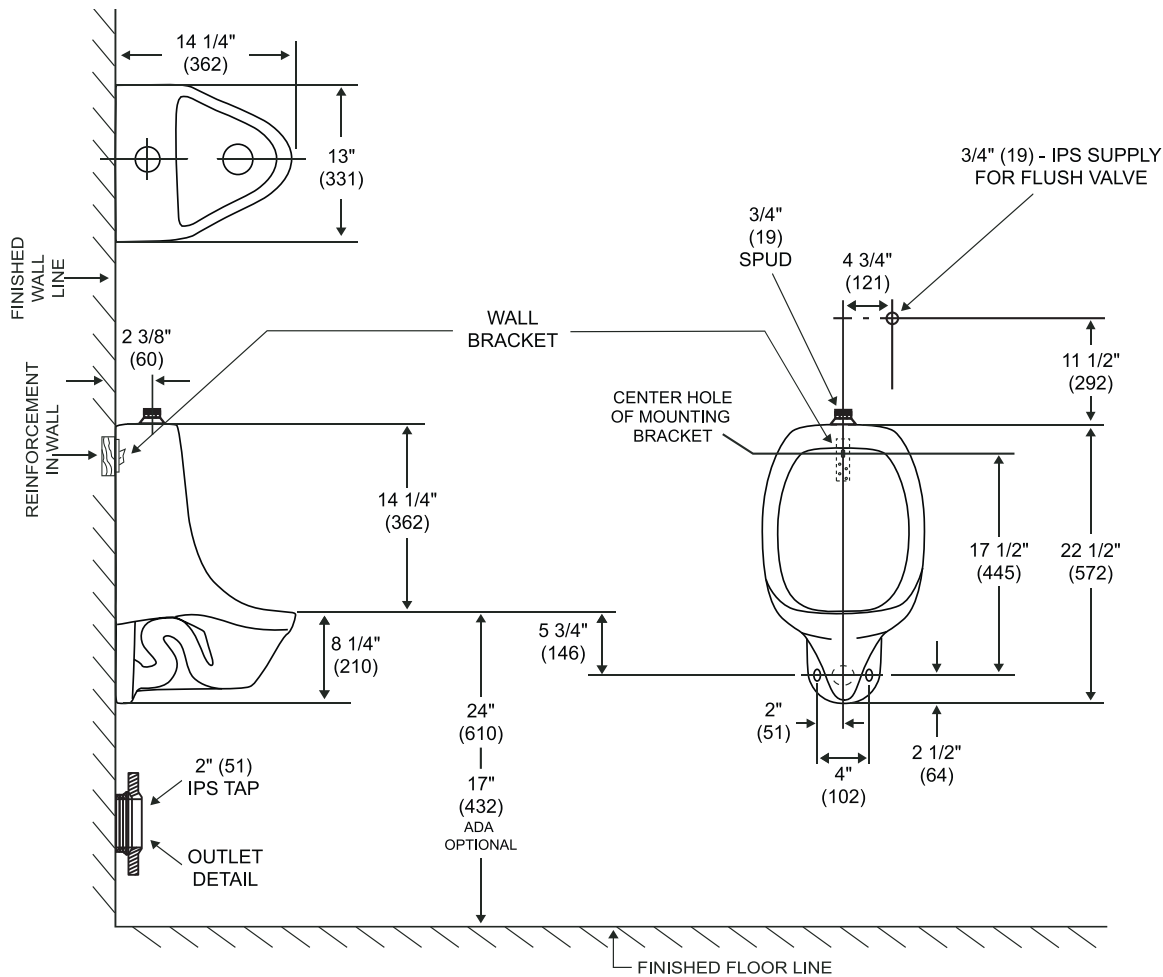
PF1807

Rear Outlet Urinal Siphon-jet



Product Specification:

Siphon jet urinal shall be made of vitreous china with a 3/4" top spud. Urinal shall include inlet spud and brackets. Urinal shall use 1 gpf (3.8 lpf). Urinal shall be PROFLO model PF1807.



Warranty and Codes:

This product comes complete with installation, operating, care and maintenance instructions. All PROFLO fixtures carry a 1-year limited warranty. This product meets or exceeds ASME/ANSI A112.19.2M. In an effort to continually improve our products, we will make design changes from time to time. We reserve the right to ship newly designed product to fill any order unless we agree in writing to do otherwise.

