

PF1119LF

TWO HANDLE WALL MOUNT SERVICE SINK FAUCET



Product Features

- 8" fixed centers with adjustable 7-5/8" ~ 8-3/8" range
- Metal lever handle
- Ceramic Disc Cartridges
- Integral stops
- 3/4" hose thread on spout
- Solid brass waterways

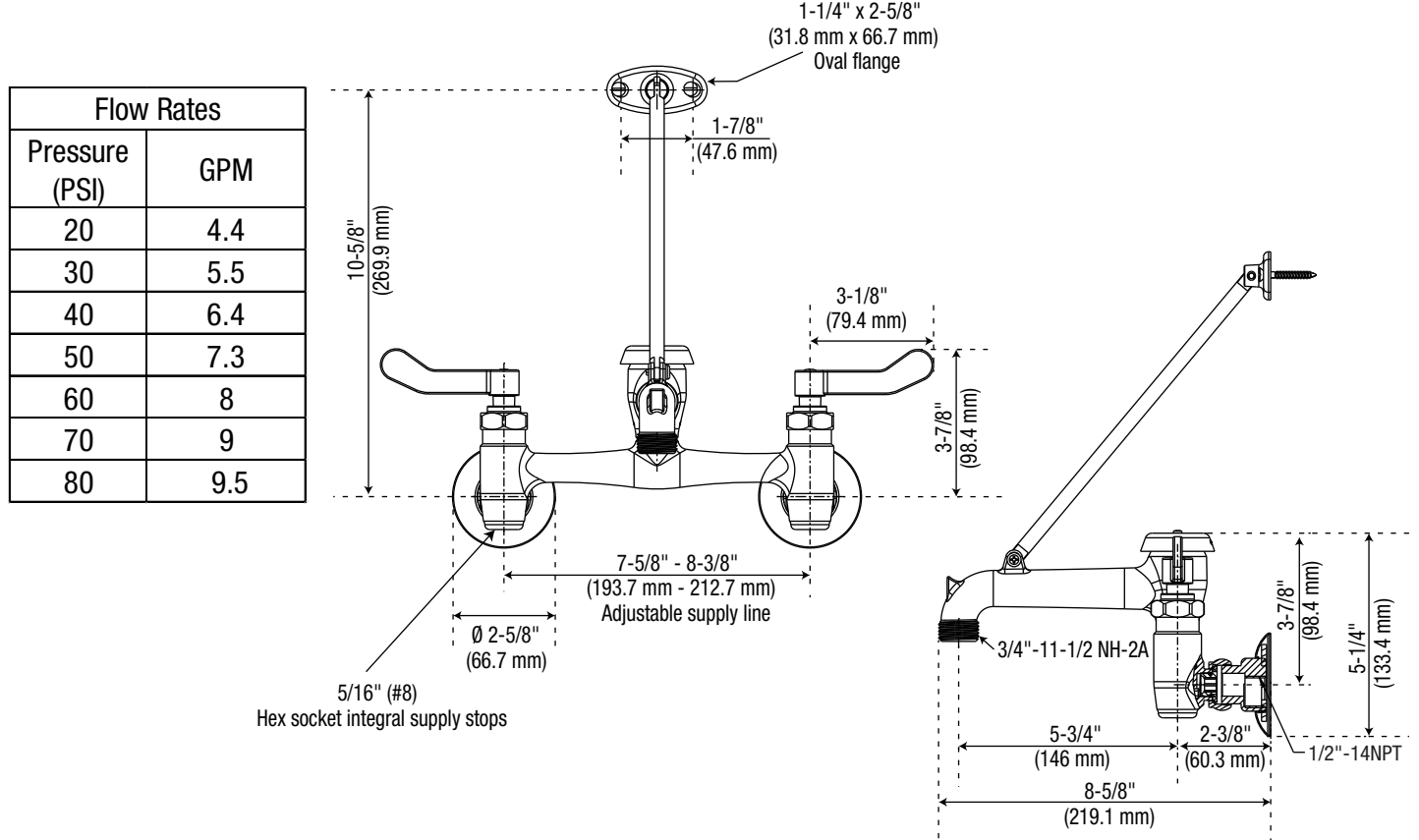
Codes and Certifications



- Certified to ASME A112.18.1 / CSA B125.1
- cUPC/IAPMO listed
- ADA compliant
- NSF/ANSI/CAN61: Q ≤ 1
- ASSE 1001 vacuum breaker - backflow prevention



PF1119LF



For detailed warranty information, visit ferguson.com/proflo-faucet-warranty.