

Specifications

PF651ABS

ABS Freestanding Tub Drain Rough-In Kit



Product Features

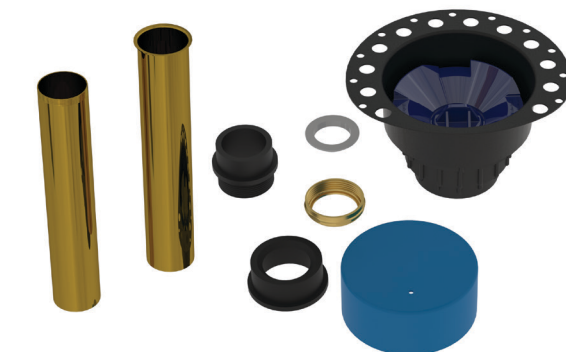
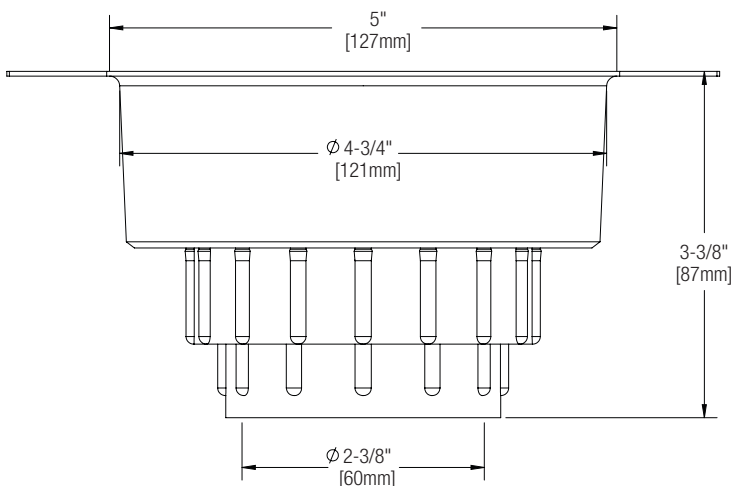
- Universally designed to fit all freestanding bath tubs
- Asymmetrical 18-gauge epoxy coated metal deck flange—makes installation in tight spaces easier
- Built-in snap-off test cap—allows for water/air/smoke testing
- Low-profile design allows for installation in 8" joist space or greater
- 2X brass tailpieces (fine thread and flanged)
- ABS adapter kit (attaches rough-in to ABS bath wastes)
- Rough-in assembly with 2" ABS DWV hub outlet
- 2" x 1-1/2" ABS hub outlet reducing bushing
- Substrate cutting template
- Mortar/Tile guard

NOTE: This product is NOT FOR USE with liquid applied or sheet membranes. This product must be installed in a dry area with no potential of water contact.

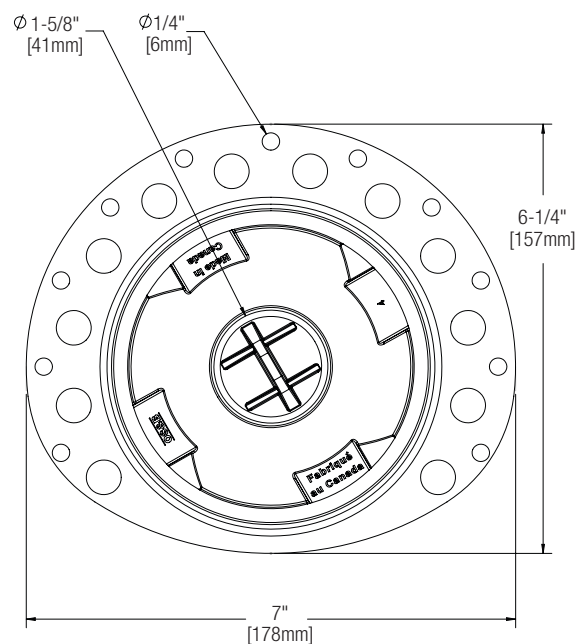
Item/Material Type

PF651ABS

ABS



PF651ABS



Warranty and Codes

This product comes complete with installation, operating, care and maintenance instructions. This PROFLO faucet carries a limited lifetime warranty when installed in residential applications. The warranty is five years in commercial applications. This product meets UPC.

Certification*

Mod# ITD35



C US

Meets UPC

File# 33062

*The "cSAus Meets UPC" mark means the product conforms to the requirements of the NPC, UPC, IPC and IRC.