

PLUM 

Serving wine, just as the  
winemaker intended



# PLUM Trim Kit Installation Manual

PLUM 



# Index

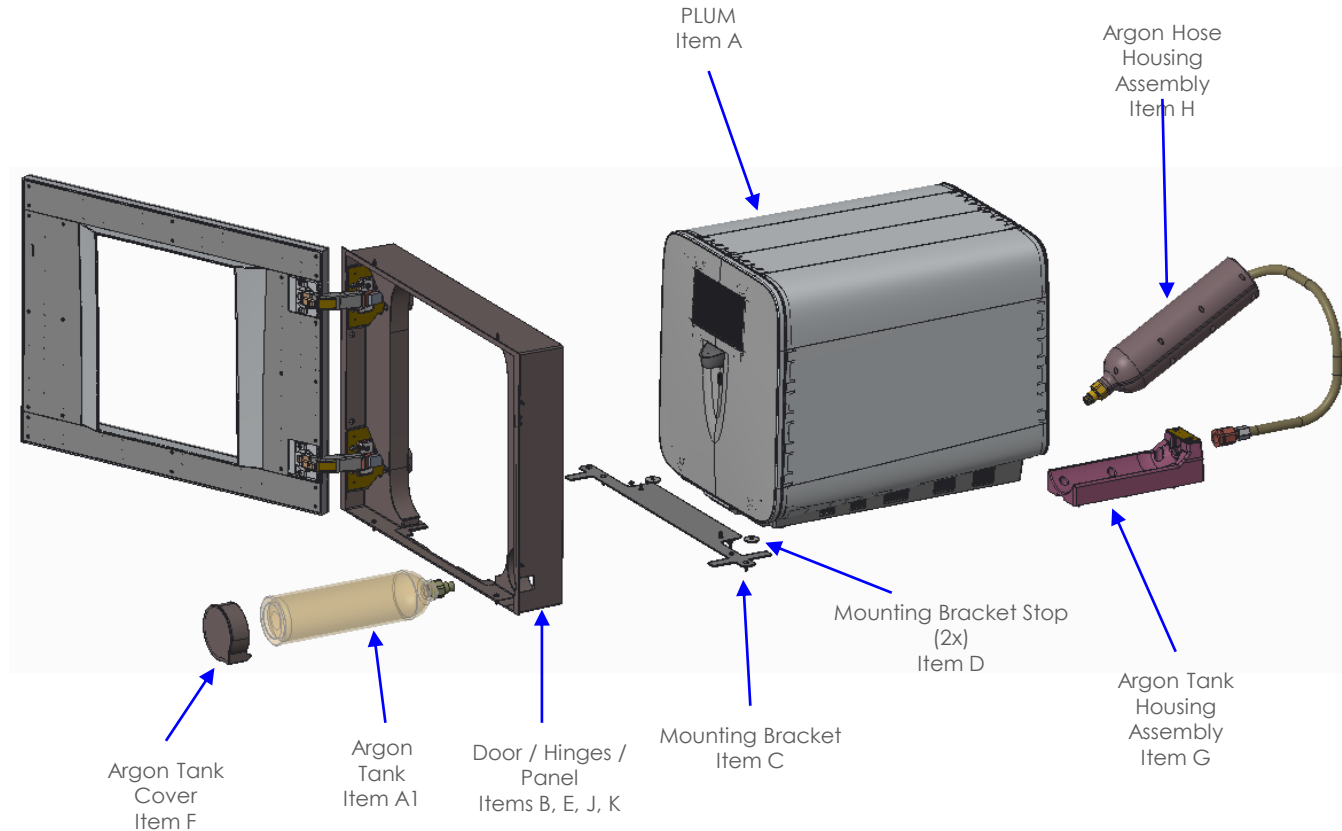


---

Section 1 - Exploded View.....	Page 3
Section 2 - Bill of Materials.....	Page 4
Section 3 - Cabinet / Plum / TrimKit.....	Page 5
Section 4 - Cabinet Ventilation Requirements.....	Page 6
Section 5 - Trim-Kit Location Requirement (when placed near wall).....	Page 7
Section 6 - Tools Required.....	Page 8
Section 7 - Stop Washer assembly (Item C, D, L and T).....	Page 9,10
Section 8 - PLUM Mounting Bracket install (Item C).....	Page 11
Section 5 - Hinge Plate Assembly.....	Page 10
Section 6 - Fan Bracket Assembly.....	Page 10
Section 7 - Drilling Pilot Holes.....	Page 11
Section 8 - Assembled Plates and Fans.....	Page 12
Section 9 - Plum Mounting Plate Assembly.....	Page 15
Section 10 - Panel Assembly Mounting Screw hole location transfer.....	Page 16
Section 11 - Sliding PLUM (with mounting plate) into Cabinet Mounting Brackets.....	Page 17
Section 12 - Panel Assembly.....	Page 18
Section 13 - Door Hinge Assembly.....	Page 19
Section 14 - Door Assembly.....	Page 20
Section 15 - Packaging Breakdown.....	Page 22

# Trim Kit - Assembly Process

## Section 1 - Exploded View



# Trim Kit - Assembly Process

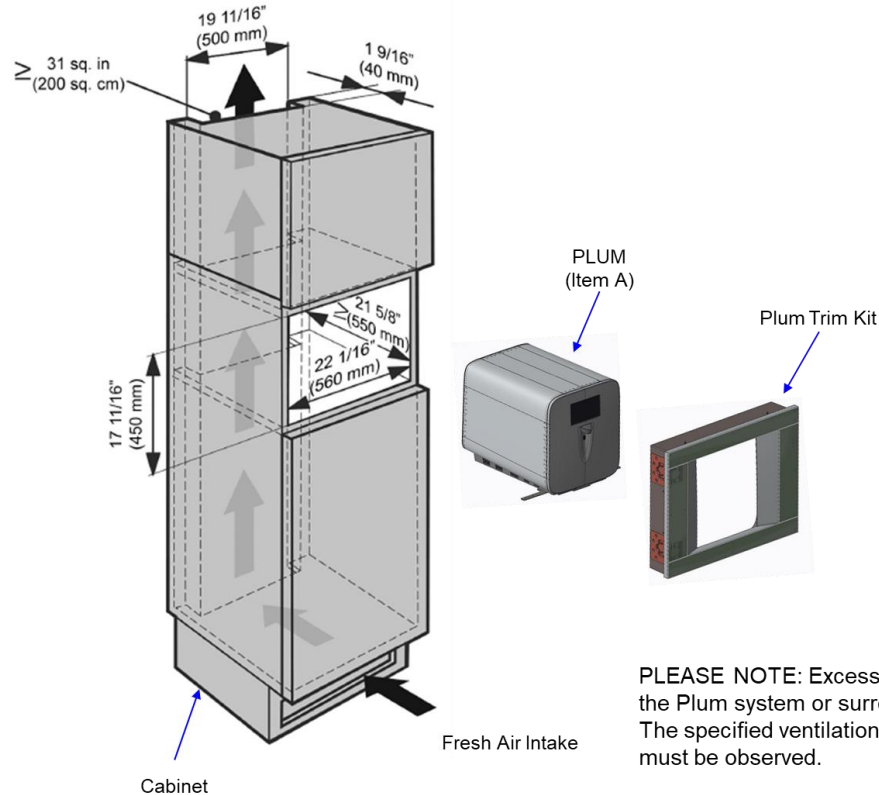
## Section 2 - Bill of Materials

Item	Image	Description	QTY
A		PLUM	1
A1		Argon Tank	1
B		Panel Assembly	1
C		Mounting Bracket	1
D		Stop Washer (mounting bracket)	2
E		Door	1
F		Argon Tank Cover	1
G		Argon Tank Housing Assembly	1
H		Argon Hose Housing Assembly	1
J		Hinge Plate Blum Part Number BH173H7100 Clip Cam Mounting Plate 0mm	2
K		Hinge BLUM Part Number B071B7550 BLK CLIP TOP 155° ZERO PROTRUSION CONCEALED HINGE SOFT CLOSE BLACK ONYX (SHEET #2)	2

Item	Image	Description	QTY
L		Ultra-Low-Profile Socket Head Screw 10-24 Thread Size, 3/8 inch Long (Mounting Plate)	2
M		Phillips Wood Screw #10 x 5/8 inch Coarse Deep Thread Pan Head Black (Mount brkt, Mount plate, Panel)	30
N		Phillips Oval Head Machine Screw Stainless Steel #8-32 x 1/2 inch (Hinge Door)	4
O		Phillips Oval Head Machine Screw Stainless Steel #8-32 x 3/8 inch (Hinge Panel)	4
P		Button Head Torx Screw M3 x 0.5 mm Thread, 6 mm Long (Hinge Plate)	12
Q		Torx Flat Head Plastite Screw #4 x 1/2 inch (Door)	24
R		Phillips Rounded Head Plastite Screw #8 x 3/4 inch (Argon Extend Housing)	8
S		Phillips Button Head Machine Screw #8-32 x 1/2 inch (Argon Cradle)	2
T		Stop Washer Template	1

# Trim Kit - Assembly Process

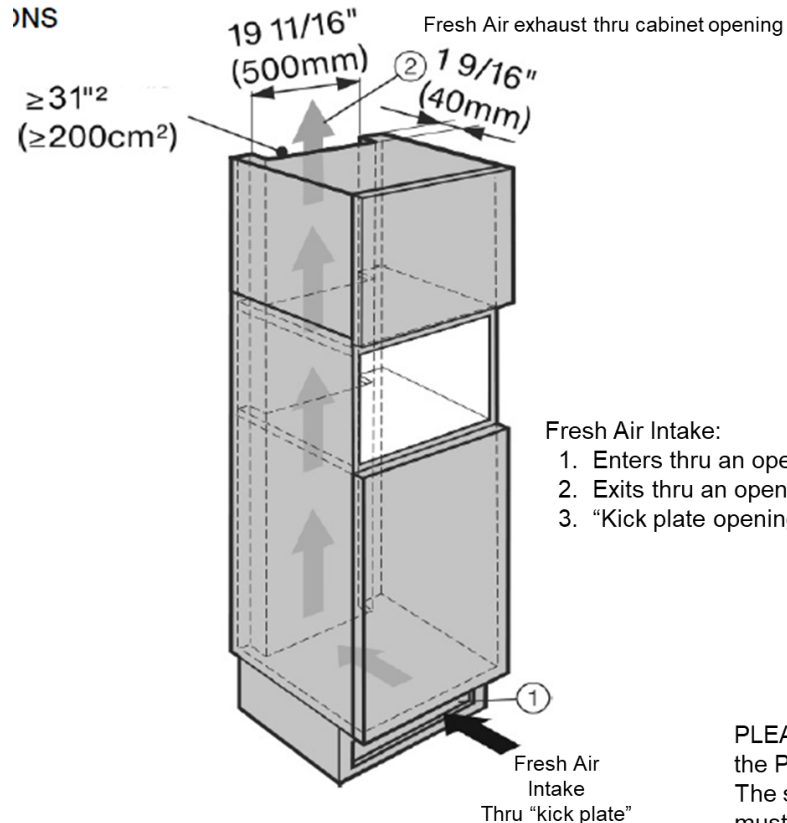
## Section 3 - Cabinet / Plum / TrimKit



PLEASE NOTE: Excessive hot air can damage the Plum system or surrounding cabinets. The specified ventilation cross-sections absolutely must be observed.

# Trim Kit - Assembly Process

## Section 4 - Cabinet Ventilation Requirements



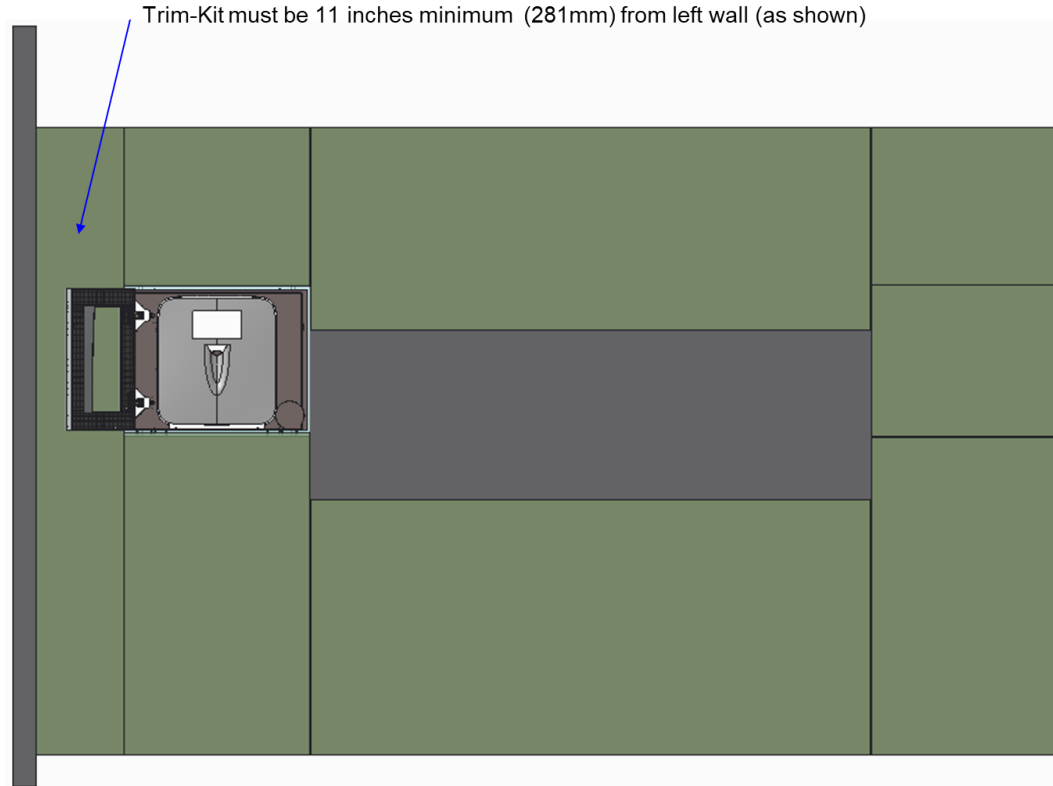
### Fresh Air Intake:

1. Enters thru an opening in the "kick plate" at the bottom of cabinet.
2. Exits thru an opening at the top rear of cabinet.
3. "Kick plate opening" and "cabinet opening" must be 200cm sq min.

PLEASE NOTE: Excessive hot air can damage the Plum system or surrounding cabinets. The specified ventilation cross-sections absolutely must be observed.

# Trim Kit - Assembly Process

## Section 5 - Trim-Kit Location Requirement (when placed near wall) PLUM





# Trim Kit - Assembly Process

## Section 6 - Tools Required

Philips Screw Driver

Hex Screw Driver

Scissors

Center Punch

Hammer (Little)

Tape Measure

Scotch Tape

Dremel  
with  
1.5mm Drill Bit  
(taped to Dremel)

“Door Open” Thumb Drive

Tool bag

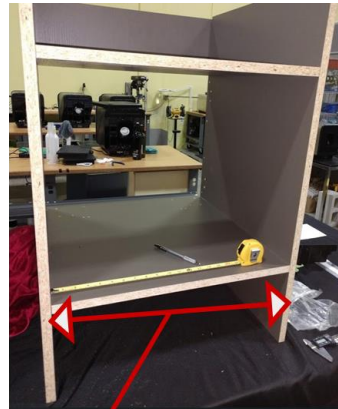
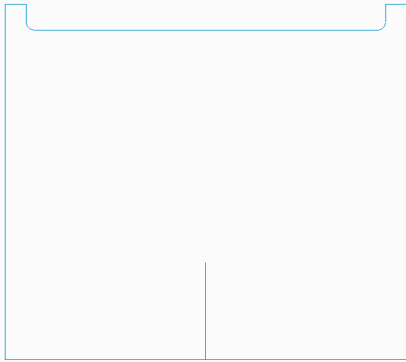


# Trim Kit - Assembly Process

## Section 7 - Stop Washer assembly (Item C, D, L and T)



### Step 1



Step 1A

Measure inside width of the cabinet



Step 1B



1A - Find the center of the cabinet floor

1B - Draw a straight line in the center, perpendicular to cabinet face..

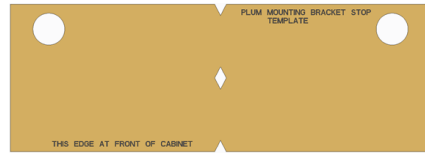
Note: This will be used in the next steps to help you locate the mounting bracket template correctly

Cabinet Floor

# Trim Kit - Assembly Process

## Section 7 - Stop Washer assembly (Item C, D, L and T)

### Step 2



Step 2A

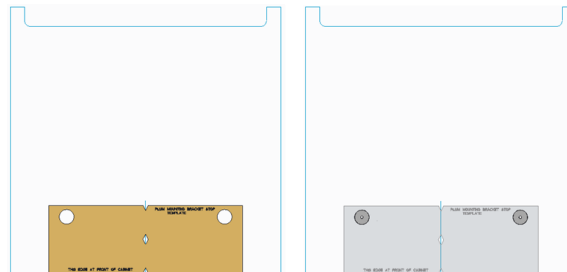


2A - Use Stop Washer Template T212A (Item T) to locate the Stop Washers (2x) (Item D).

- 2B - Center the template using template diamonds and line it up with line drawn in section 3 - step 1
- Make sure edge of the template lines up with edge of the cabinet as show in the picture.
  - Place Stop Washers (2x) (Item D) in holes of template.
  - Mark 2 holes in center of holes of the Stop Washers in the cabinet, using a sharp tool or punch.
  - Use a drill bit of 1mm (0.04inch) or 1.5mm (0.0625inch or 1/16 inch) diameter to create pilot holes.
  - Fasten stop washers to cabinet with 1 screw each. (item M)
    - Remove Stop Washer Template.

Note: These Stop Washers will align PLUM in the center of the cabinet and at the correct depth into the cabinet.

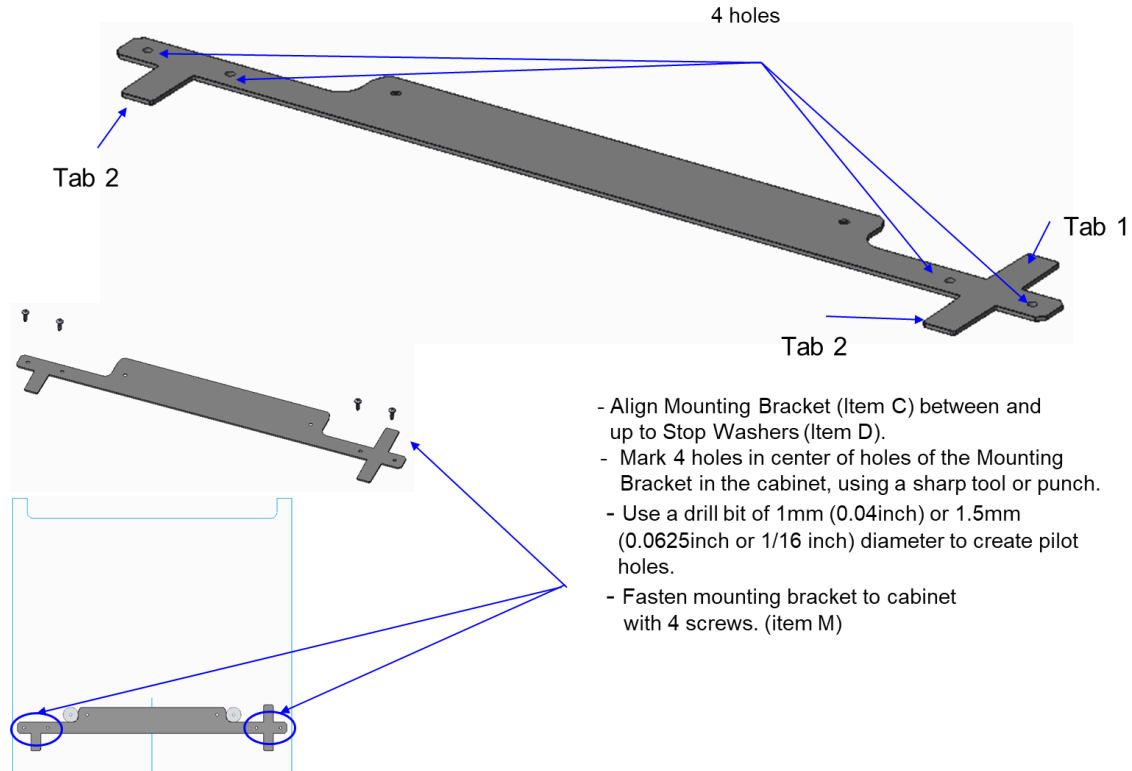
- Note: For panel install on page 12.
- Measure inside width of cabinet.
  - Euro style cabinet should measure 560mm.
  - American style cabinet should measure 22.5".
- Note: With cabinet measuring 22.5"  
Use panel screw shim (item ZZ) at all panel screws.



# Trim Kit - Assembly Process

## Section 8 - PLUM Mounting Bracket install (Item C) **PLUM**

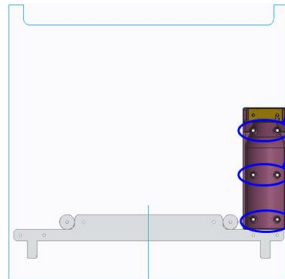
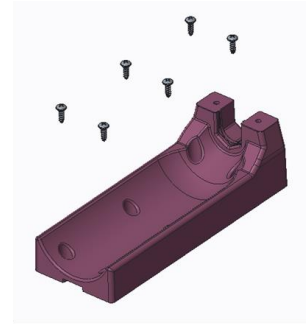
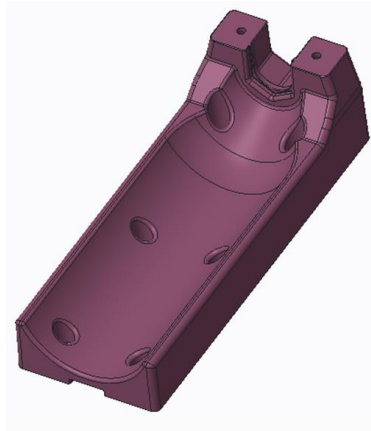
### Step 1



# Trim Kit - Assembly Process

## Section 7 - PLUM Argon Tank Housing (Item G)

### Step 1

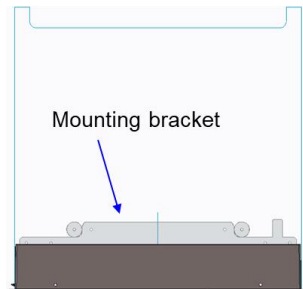
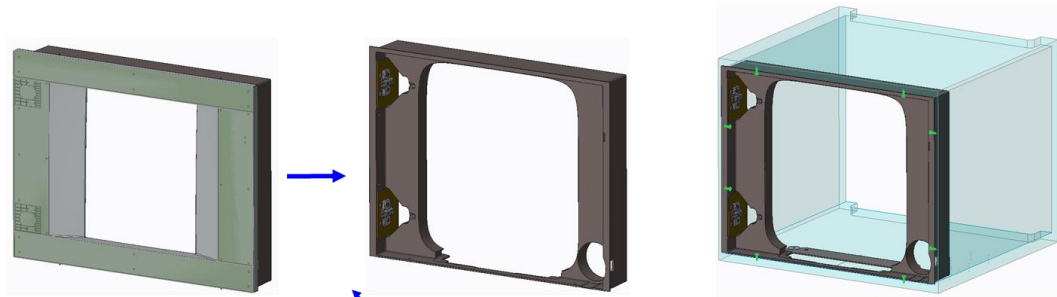


- Place Argon Tank Housing (Item G) against Mounting Bracket (Item C) aligning to "tab 1" (see slide 10).
- Mark 6 holes in center of holes of the Argon Tank Housing in the cabinet, using a sharp tool or punch.
- Remove Argon Tank Housing..
- Use a drill bit of 1mm (0.04inch) or 1.5mm (0.0625inch or 1/16 inch) diameter to create pilot Holes.
- Re-install tank hsg with the 6 screws (item M).  
(it is easier to fully seat screws without Plum)
- Remove screws and Argon Tank Housing..

# Trim Kit - Assembly Process

## Section 7 - PLUM Door, Panel and Hinges (Item E, B, J and K)

### Step 1



Panel aligns to mounting bracket

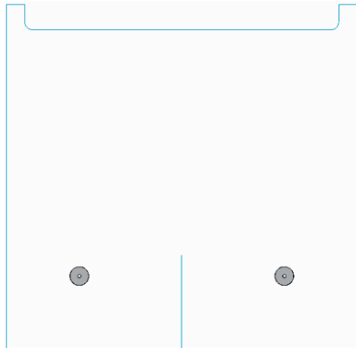
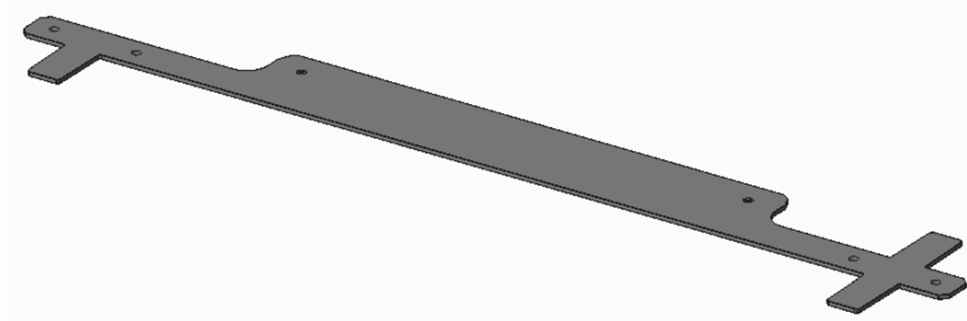
- 1A - Remove Door (Item E) from Panel (Item B).  
(unsnap hinge... see section 14 step 1)
- 1B- Align Panel (Item B) to Mounting Bracket (Item C) aligning to "tab 2" (2x) (see slide 10).
  - Check fit to Cabinet.
  - Mark 8 holes in center of holes of Panel in the cabinet (shown in Green), using a sharp tool or punch.
  - Remove Panel
  - Use a drill bit of 1mm (0.04inch) or 1.5mm (0.0625inch or 1/16 inch) diameter to create pilot Holes.
  - Re-install panel with the 8 screws (item M).  
(it is easier to fully seat screws without Plum)
  - Remove screws and panel.

# Trim Kit - Assembly Process

## Section 7 - Remove Mounting Bracket Assembly (Item C)



### Step 1

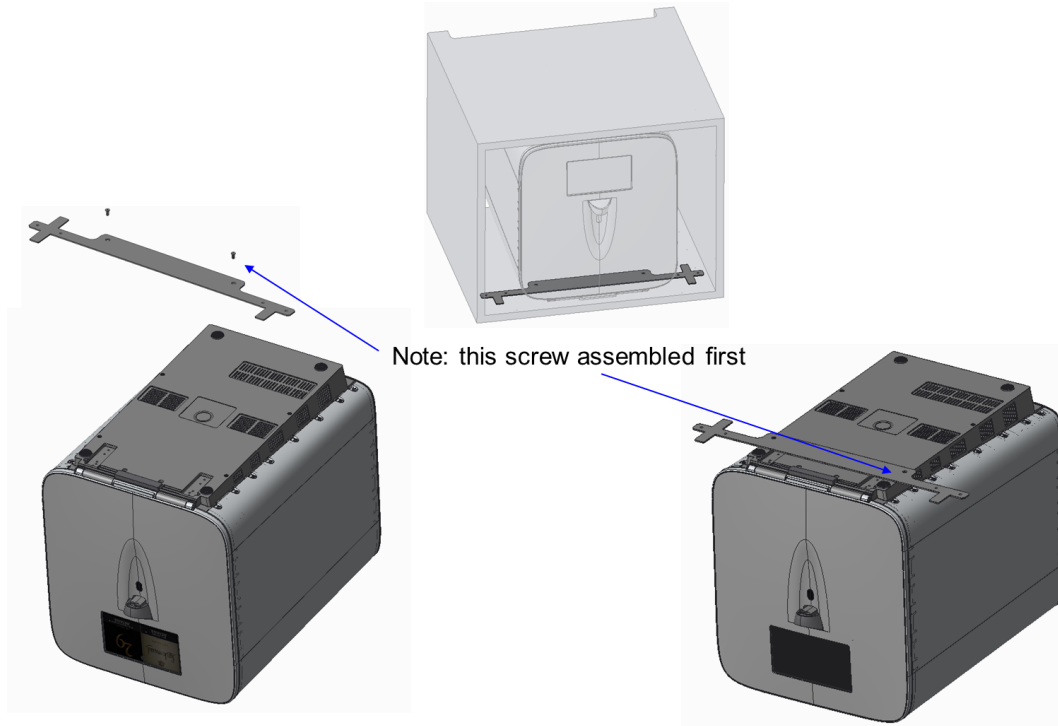


- Remove screws from Mounting Bracket (Item C).
- Remove Mounting Bracket (Item C).
- Assemble Mounting Bracket to Plum (Item A) (see slides 15 and 16)

# Trim Kit - Assembly Process

## Mounting Bracket Assembly (Item C and L)

### Step 2

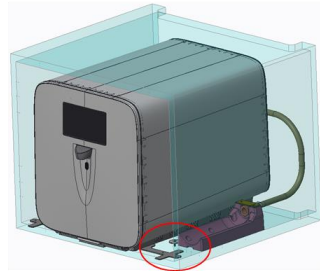




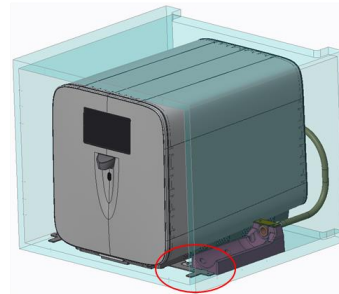
# Trim Kit - Assembly Process

## Section 11 - Sliding PLUM (with mounting plate) to engage into Cabinet Stop Washers

### Step 1



Step 1A



Step 1B  
Step 1C

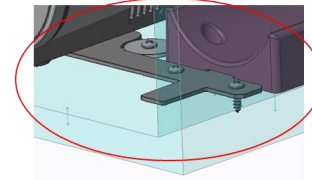
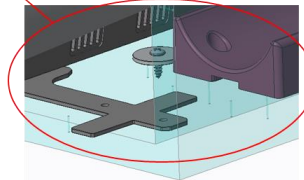
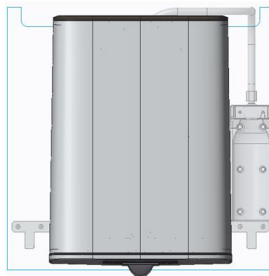
1A - Slide PLUM (Item A) with Mounting Bracket (Item C), into cabinet Stop Washers (Item D).

1B - Aligning to and stopping at Stop Washers (screw into place).

1C - Align Argon Tank Housing Assembly (Item G) to tab 1 (see page 10) of Mounting Bracket

Note: Use 4 wood screws (2 per side) (Item M) to fix PLUM to cabinet using Mounting Bracket.

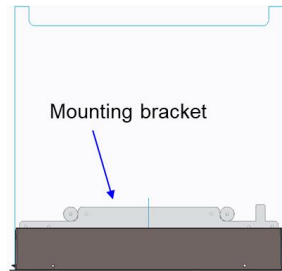
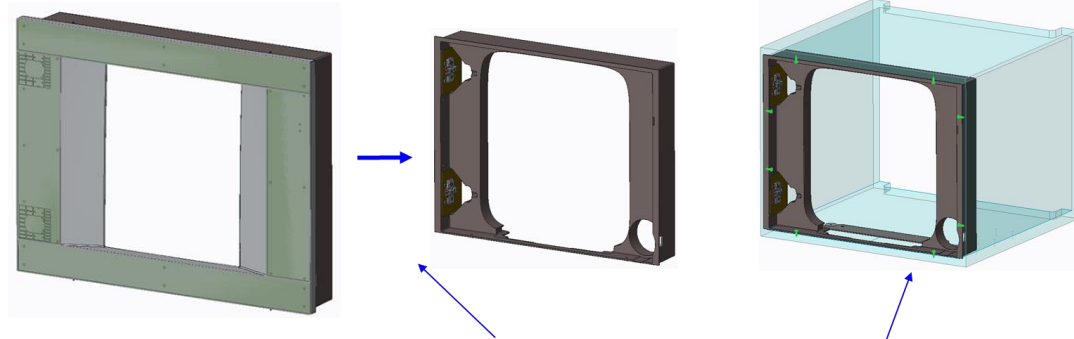
Note: Use 6 wood screws (Item M) to fix Argon Tank Housing Assembly to cabinet.



# Trim Kit - Assembly Process

## Section 7 - PLUM Door, Panel and Hinges (Item E, B, J and K)

### Step 1



Panel aligns to mounting bracket

- 1A - Remove Door (Item E) from Panel (Item B).  
(unsnap hinge... see section 14 step 1)
- 1B- Align Panel (Item B) to Mounting Bracket  
(Item C) aligning to "tab 2" (2x) (see slide 10).
- Check fit to Cabinet.
- Mark 8 holes in center of holes of Panel in the cabinet (shown in Green), using a sharp tool or punch.
- Remove Panel
- Use a drill bit of 1mm (0.04inch) or 1.5mm (0.0625inch or 1/16 inch) diameter to create pilot Holes.
- Re-install panel with the 8 screws (item M).  
(it is easier to fully seat screws without Plum)
- Remove screws and panel.

# Trim Kit - Assembly Process

## Section 14 - Door Assembly and Adjustment

### Step 1- Door Mounting



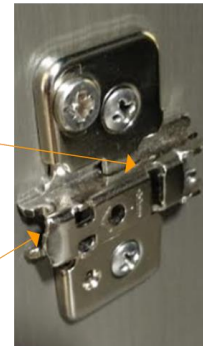
- 1 - Assemble the Door into cabinet  
(BLUM hinges will snap in place onto the hinge plates)

Note:

- Make sure to align the hinges to the hinges plates carefully to avoid any scratches.
- To Remove door: Un-snap hinges from the rear of the cabinet using a screwdriver.



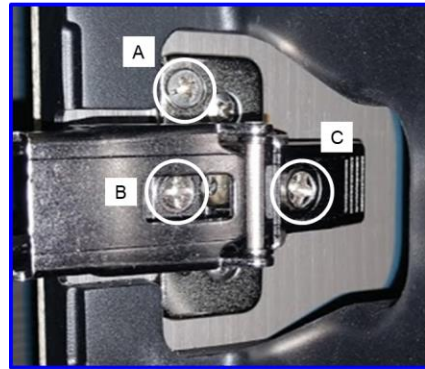
snap



hook

## Step 2 - Door/Hinge Screw Adjustment

### 2 - Hinge Screw Adjustment



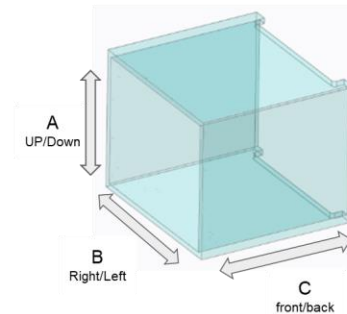
A - Screw moves the door up/down.  
Clockwise moves up.  
CCW moves down.

B - Screw moves the door right/left.  
Clockwise moves ?right?.  
CCW moves ?left?.

C - Screw moves the door front/back  
Clockwise moves back.  
CCW moves forward.



Step 2



Screw Movement Guide

# Trim Kit - Assembly Process

## Section 14 - Door Assembly and Adjustment

### Step 1- Door Mounting



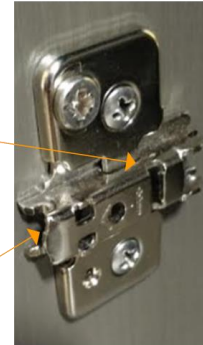
- 1 - Assemble the Door into cabinet (BLUM hinges will snap in place onto the hinge plates)

Note:

- Make sure to align the hinges to the hinges plates carefully to avoid any scratches.
- To Remove door: Un-snap hinges from the rear of the cabinet using a screwdriver.



snap



hook