



INSTALLATION

PIONEER INDUSTRIES, INC.
 3325 S. Garfield Ave.
 Commerce, CA 90040
 (800) 338-9468
 www.pioneerind.com

Tools:



Adjustable Wrench Plumbers Putty Teflon Tape Rags

Model Number: 3PR210, 3PR212

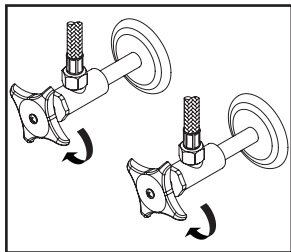


Warnings and Notes:

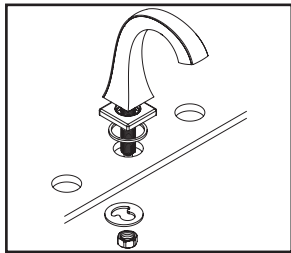
Check with local plumbing code requirements before installation.
 This product should be installed by a local listed plumber.
Do not use plumbers putty on threads.

Installation Steps:

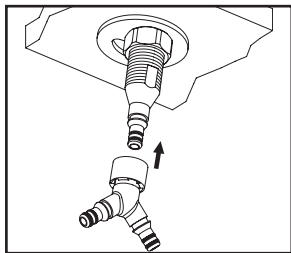
Two Handle Lavatory Widespread Faucet



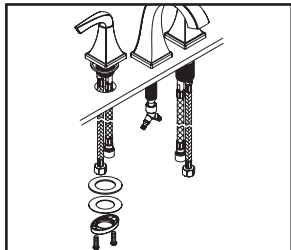
(1) Shut off the water supply. Remove old faucet. Clean mounting surface in preparation for new faucet.



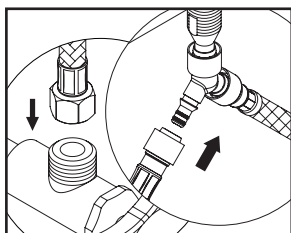
(2) Make sure gasket is under spout. Place spout in position on the sink, slide mounting bracket through spout shank from underneath the sink, thread mounting nut onto spout shank and tighten the mounting nut.



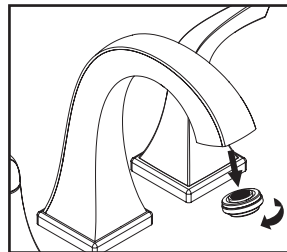
(3) Insert Y connector into the end of quick connect adapter on the inlet end of the spout shank. Push until a "click" sound is heard. Pull down the Y connector to test engagement.



(4) Place cold and hot side valves in position on the sink, ensure handles operate in correct direction. From underneath the sink, hand-tighten locknut to the side valve. Position side valve to desired location from top. Tighten screws on locknut with the help of Phillips head screwdriver to secure side valve.

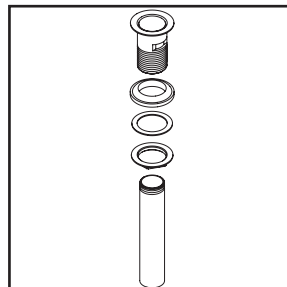


(5) Insert outlet hose of the side valve into the end of quick connect on the Y connector, push until a "click" sound is heard. Pull down the outlet hose of both side valves to test engagement.



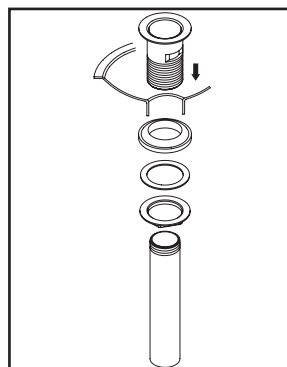
(6) Important: After installation is complete, remove the aerator. Turn on the water and allow both hot and cold water to run for at least one minute each. While water is running, check for leaks. Turn off the water and replace the aerator when finished.

Push-Down Drain Installation:



(1) a. For brass pop-up: Remove flange from drain body.

b. For 50/50 type pop-up: Remove rubber gasket, flat washer, and lock nut from metal drain body.



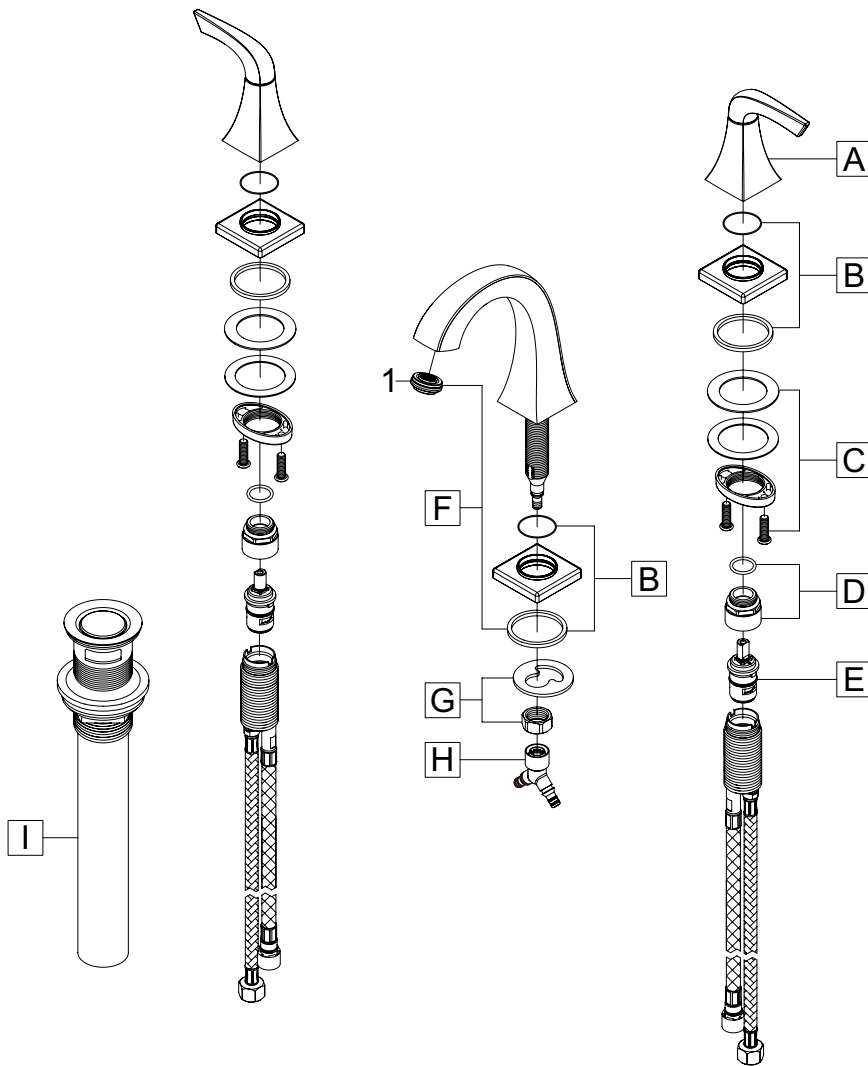
(2) a. For brass pop-up: Place a ring of plumbers putty on the bottom of the flange and apply Teflon tape on threaded tailpiece. Thread tailpiece to drain body. Insert flange through drain hole and attach drain body to flange from underneath the sink.

b. For 50/50 type pop-up: Place a ring of plumbers putty on the bottom of the flange. Insert drain body through drain hole. Thread rubber gasket, flat washer, and lock nut onto drain body. Apply Teflon tape only on the threaded area and attach tailpiece to drain body. **Please Note: Use Teflon tape only on all thread connection areas. Using pipe thread sealant might weaken material structure and cause leaks.**

Exploded Drawing :

* Note: Please specify finish/color when ordering.

	ITEM #	DESCRIPTION
A	X-1300022*	Lever Handle
B	X-4300094*	Valve Escutcheon & Gasket
C	OP-530006	Valve Mounting Kit
D	X-4900131	Bonnet Nut & O-Ring
E	OP-330002C, H	Ceramic Stem-Cold, Hot
F	X-2300032*	Spout
G	X-5300003	Spout Mounting Kit
H	X-4300101	'Y' Connector
I	OP-630007*	Push-Down Drain With Overflow (For 3PR210)
I	OP-630011*	50/50 Push-Down Drain With Overflow (For 3PR212)
1	OP-430040	1.2 GPM Aerator



For more care information or trouble shooting inquiries about your Pioneer product, please call:

Pioneer Industries, Inc. (800) 338-9468

Monday-Friday 8 AM to 8 PM EST (5 AM to 5 PM PST)

www.pioneerind.com

Oct. 06. 23