



# INSTALLATION

**PIONEER INDUSTRIES, INC.**  
 3325 S. Garfield Ave.  
 Commerce, CA 90040  
 (800) 338-9468  
 www.pioneerind.com

### Tools:



Screwdriver



Power Drill



Silicone Sealant



Rags

## Model Number: 3MO800

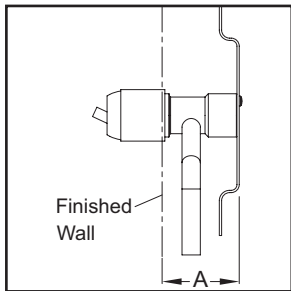


### Warnings and Notes:

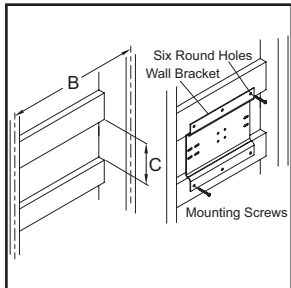
Check with local plumbing code requirements before installation.  
 This product should be installed by a local listed plumber.  
**Do not use plumbers putty on threads.**

## Installation Steps:

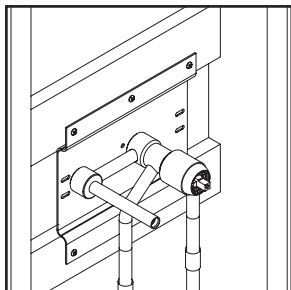
### Single Handle Lavatory Wall Mount Vessel Filler



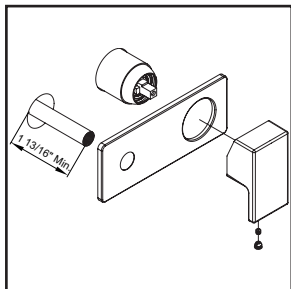
Note: - The wall bracket requires special framing and support considerations. Please pay special attention to minimum and maximum dimension recommendations noted.  
 (1) Refer to recommended installation distance, improper installation may result in performance and aesthetic issues with the product.  
 ※ "A" installation distance: 2 5/8" Min to 3 5/8" Max.



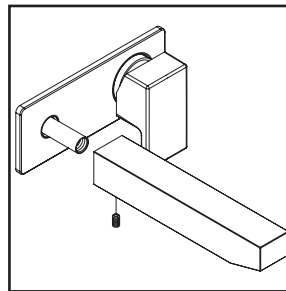
(2) A suggested framing example is shown. Each installation may have different framing requirements than shown. Construct the framing for your installation.  
 ※ "B" framing distance: 16"  
 ※ "C" framing distance: 5 3/8"



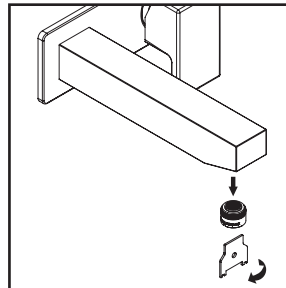
(3) Attach the wall bracket to the framing with six mounting screws provided with the wall bracket. Verify that the installation is correct and leveled. Also verify the wall bracket is firmly secured to the framing.  
 Important note: A minimum exposed copper outlet pipe length of 1-13/16" measured from the finished wall is required to avoid water leakage. If the outlet pipe is less than the minimum length requirement, the extension kit X-4900125(sold separately) is necessary.



(4) Slide face plate through valve sleeve against the finished wall, attach handle to the cartridge and tighten with Allen screw, put hole cover on the handle.



(5) Push the spout through the copper tube against face plate then tighten the Allen screw on the spout. Use silicon to caulk around face plate to form water tight seal.



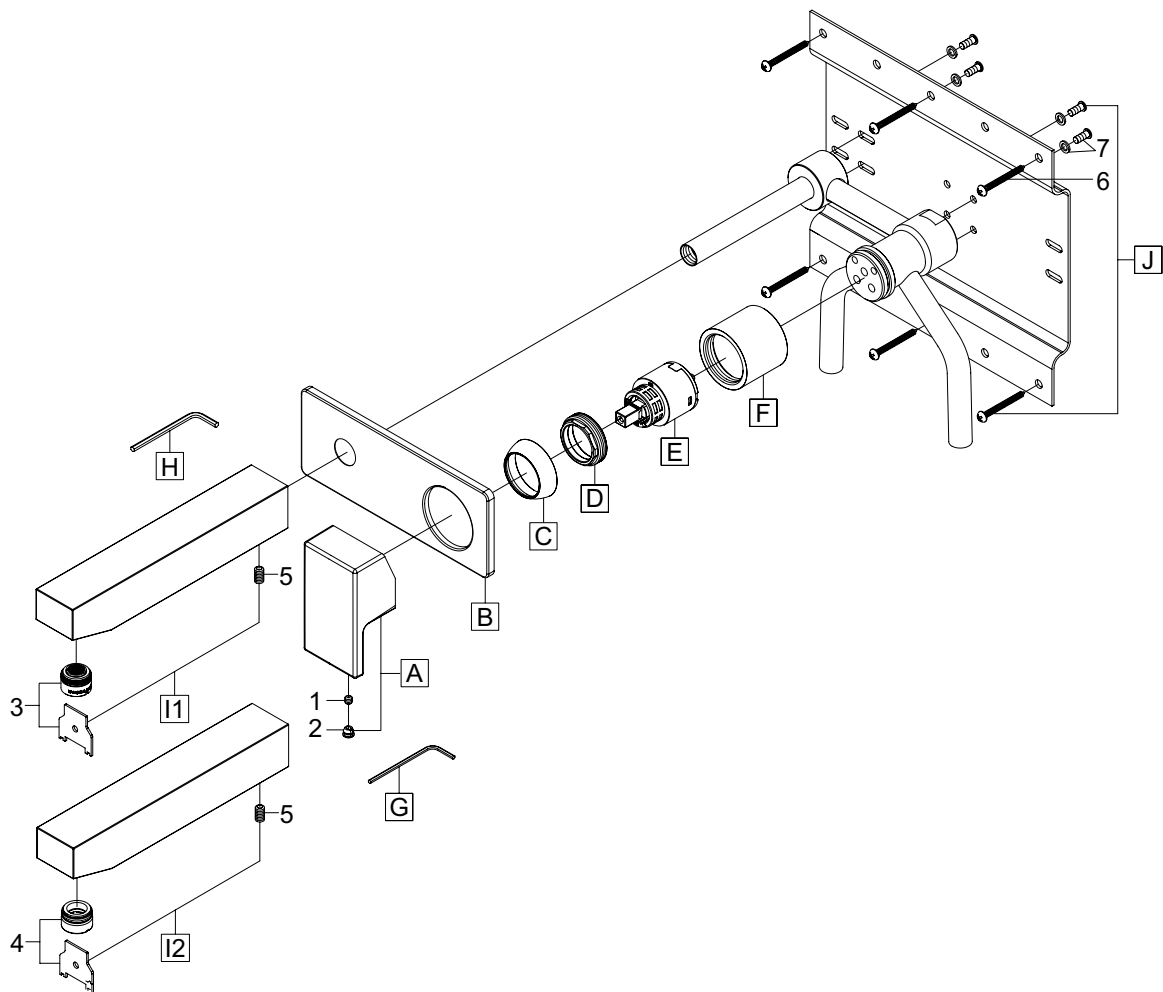
(6) Important: After installation is complete, remove aerator. Turn on the water and allow both hot and cold water to run for at least one minute each. While water is running, check for leaks. Turn off the water and replace aerator when done.

# Exploded Drawing :

\* Note: Please specify finish/color when ordering.

	ITEM #	DESCRIPTION
A	X-1900019*	Metal Lever Handle
B	X-4900132*	Face Plate
C	X-4900017*	Cap
D	X-4900018	Retainer Nut
E	X-3900001	Ceramic Disc Cartridge
F	X-4200091*	Valve Sleeve
G	X-4900024	3/32" Allen Wrench
H	X-4900026	1/8" Allen Wrench
I1	X-2300033*	Mod Spout (For Lavatory)
I2	X-2400025*	Mod Spout (For Roman Tub Filler)

	ITEM #	DESCRIPTION
J	X-4900054	Mounting Bracket With Screws
1	X-4900002	3/32" Allen Screw
2	X-4900044*	Hole Cover
3	OP-490062*	1.2 GPM Aerator & Tool (For Lavatory)
4	X-4400131	Flow Streamer (For Roman Tub Filler)
5	X-4400001	1/8" Allen Screw
6	X-4900055	Mounting Bracket Screws
7	X-4900056	Washers and Bolts



For more care information or trouble shooting inquiries  
 about your Pioneer product, please call:  
**Pioneer Industries, Inc.** (800) 338-9468  
 Monday-Friday 8 AM to 8 PM EST (5 AM to 5 PM PST)  
[www.pioneerind.com](http://www.pioneerind.com)