



INSTALLATION

PIONEER INDUSTRIES, INC.
3325 S. Garfield Ave.
Commerce, CA 90040
(800) 338-9468
www.pioneerind.com

Tools:



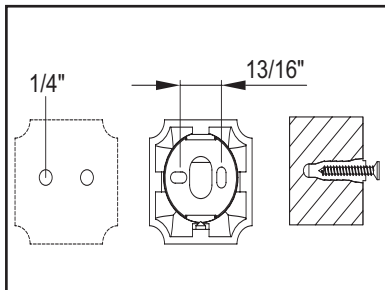
Power Drill Philips ScrewDriver Tape Measure Level Rags

Model Number: 7PR030, 7PR031, 7PR032,
7PR033, 7PR034

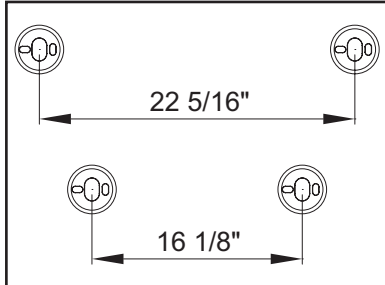


Installation Steps:

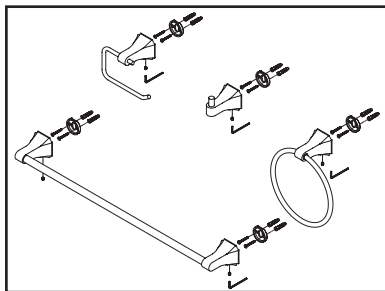
Bathroom Hardware



(1) Determine the installation location for the bathroom hardware. Drill 1/4" diameter hole approximate 13/16" apart. Place plastic anchors into the drilled holes, use hammer to tap it in flush with the wall. Place the mounting plate and secure them to the wall with the help of mounting screws.



(2) For 7PR030 & 7PR031 Install the mounting plate 22-5/16" & 16-1/8" apart respectively.



(3) Secure the bathroom hardware with the screw at the bottom. Do not overtighten.



For more care information or trouble shooting inquiries about your Pioneer product, please call:
Pioneer Industries, Inc. (800) 338-9468
Monday-Friday 8 AM to 8 PM EST (5 AM to 5 PM PST)
www.pioneerind.com