



# ENGINEERING EXCELLENCE

## Mod Series #4MO611 PARTS BREAKDOWN SHEET

### DESCRIPTION

- Two Handle Roman Tub Set With Handheld Showerhead
- Metal Lever Handles
- Rigid Spout
- 6-5/8" Reach
- Ceramic Disc Cartridges
- 4-Hole 8" to 16" Installation
- Includes Integral Diverter Valve
- Single Function Handheld Showerhead
- With 1.75 GPM Flow Rate

### FINISHES

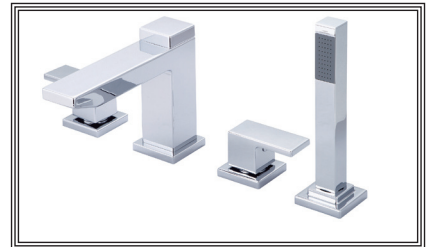
- PC Polished Chrome
- BN PVD Brushed Nickel

### Note:-

Rough-in valve included.

### FLOW

- Handheld Showerhead Limited to 1.75 GPM



#4MO611 SHOWN \* ADA 

### STANDARDS APPLICABLE

- ASME A112.18.1
- ANSI A117.1
- CUPC / IAPMO LISTED / ADA COMPLIANT

Model #: \_\_\_\_\_

Specific Features: \_\_\_\_\_

Project Name: \_\_\_\_\_

Submitted For: \_\_\_\_\_

Model	Description	Finishes	
#4MO611	Two Handle Roman Tub Set With Handheld Showerhead	<input type="checkbox"/> PC	<input type="checkbox"/> Other____

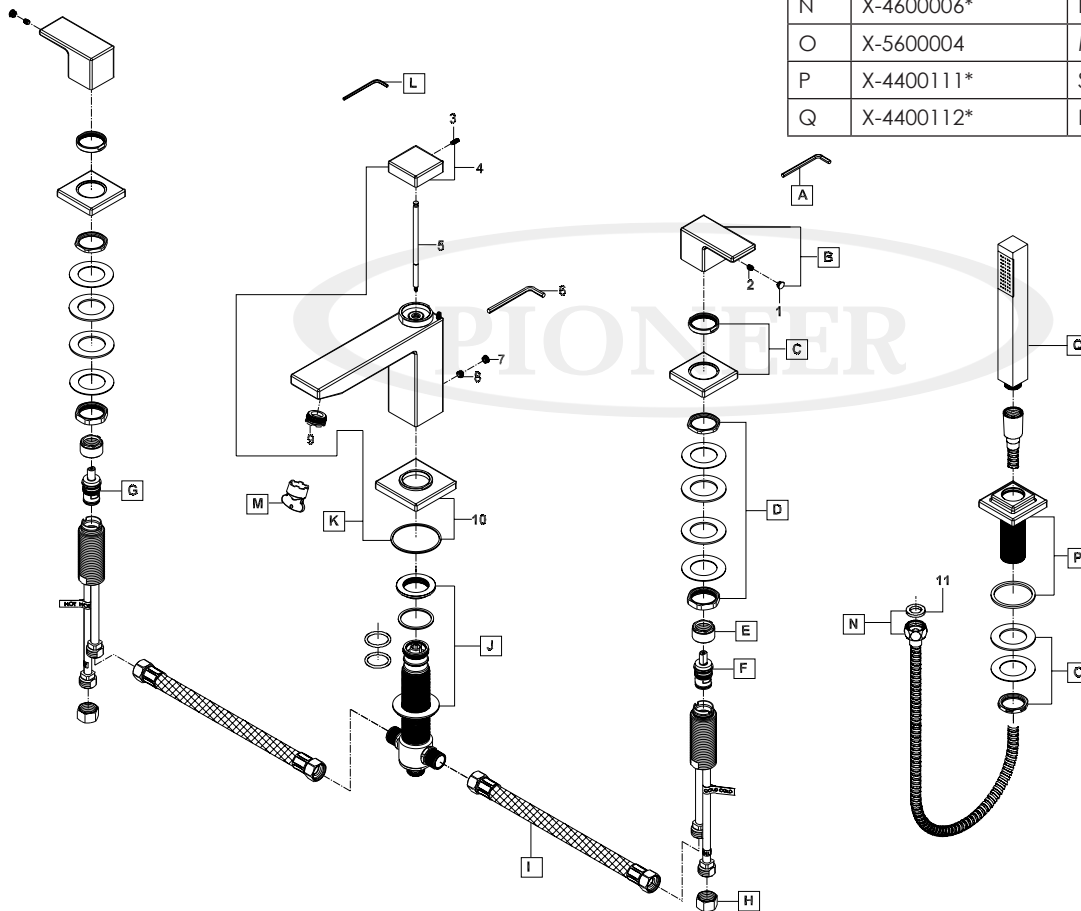


ENGINEERING EXCELLENCE

Pioneer:1-800-338-9468  
 Commerce, CA 90040  
 www.pioneerind.com  
 Pioneer Industries, Inc. © 2016

ITEM #	DESCRIPTION	ITEM #	DESCRIPTION
1	X-4900044* Hole Cover	A	X-4900024 3/32" Allen Wrench
2	X-4900002 3/32" Allen Screw	B	X-1400044* Metal Lever Handle
3	X-5700001 5/64" Allen Screw	C	X-4400108* Valve Escutcheon & Sleeve
4	X-4400113* Pull Rod Flange	D	X-5400003 Mounting Kit
5	X-4400114* Diverter Pull Rod	E	X-4900022 Bonnet Nut
6	X-4400058 5/16" Allen Wrench	F	X-3900002C Ceramic Disc Cartridge-Cold
7	X-4400073* Hole Cover	G	X-3900002H Ceramic Disc Cartridge-Hot
8	X-4400028 5/16" Allen Screw	H	X-4900004 Supply Nut
9	X-4400102 Flow Streamer	I	X-4400063 Flex Hose Connector
10	X-4400109* Spout Escutcheon	J	X-3400004 Diverter Valve
11	X-4900047 Washer	K	X-2400020* Rigid Diverter Spout
		L	X-4400110 5/64" Allen Wrench
		M	X-4400071 Flow Streamer Tool
		N	X-4600006* Handheld Showerhead Hose
		O	X-5600004 Mounting Kit
		P	X-4400111* Showerhead Holder
		Q	X-4400112* Handheld Showerhead

\* Note: Please specify finish/color when ordering.



Product Diagram



ENGINEERING EXCELLENCE

Pioneer: 1-800-338-9468

Commerce, CA 90040

www.pioneerind.com

Pioneer Industries, Inc. © 2016