



ENGINEERING EXCELLENCE

Motegi Series #3MT500 PARTS BREAKDOWN SHEET

DESCRIPTION

- Two Handle Lavatory Wide-spread Faucet
- Metal Lever Handles
- Bent Nose Spout
- 6-1/2" Reach, 1-3/4" from Deck to Aerator
- Ceramic Disc Cartridges
- 3-Hole 6" to 16" Installation
- Brass Pop-Up Drain Assembly
- Includes Spout and Valve Escutcheon

FINISHES

- PC PVD Polished Chrome
- BN PVD Brushed Nickel



#3MT500 SHOWN * ADA 

STANDARDS APPLICABLE

- ASME A112.18.1
- ANSI A117.1
- ANSI / NSF 61, SECTION 9
- CUPC / IAPMO LISTED / ADA COMPLIANT
- CONTAINS NO MORE THAN 0.25% WEIGHTED AVERAGE LEAD CONTENT

FLOW

- Aerator Limited to 1.5 GPM

Model #: _____

Specific Features: _____

Project Name: _____

Submitted For: _____

Model	Description	Finishes	
#3MT500	Two Handle Lavatory Widespread Faucet	<input type="checkbox"/> PC	<input type="checkbox"/> Other__

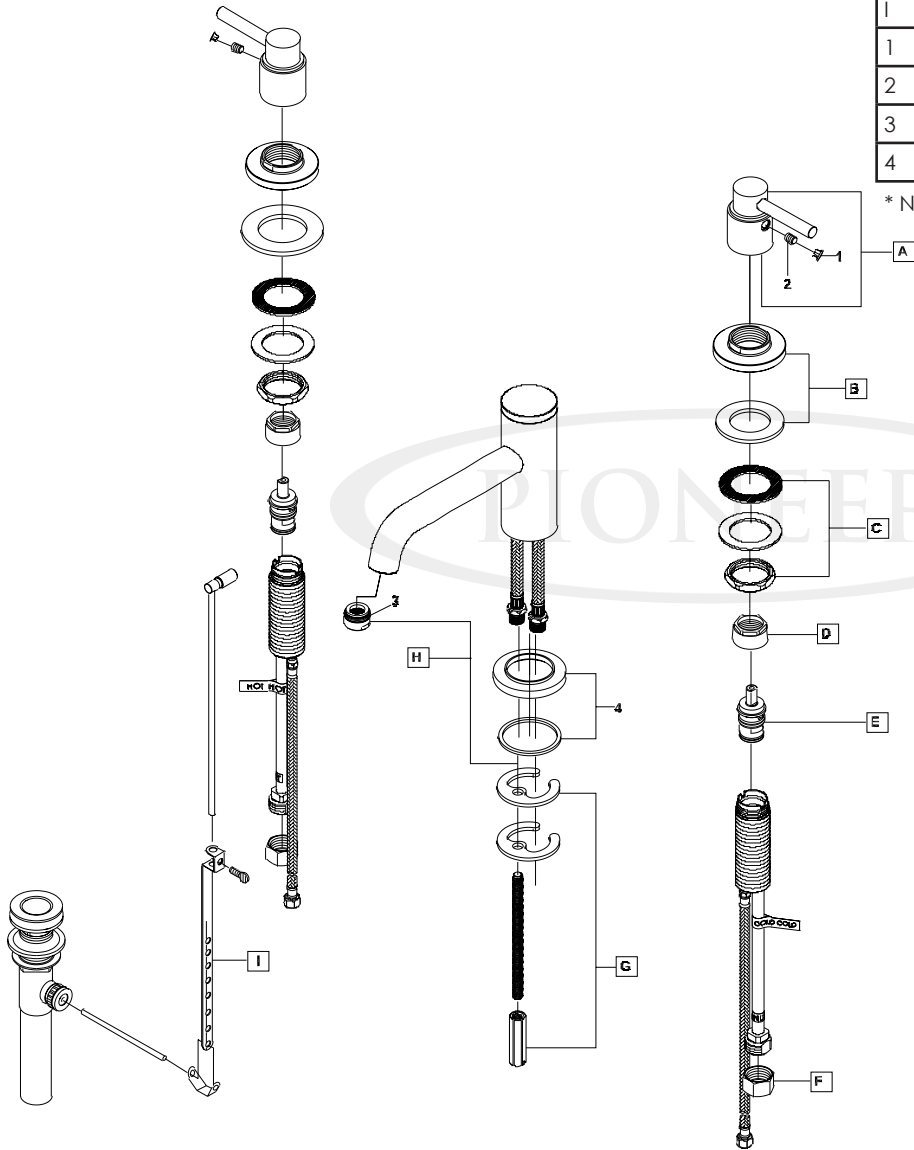


ENGINEERING EXCELLENCE

Pioneer:1-800-338-9468
 Commerce, CA 90040
 www.pioneerind.com
 Pioneer Industries, Inc. © 2013

	ITEM#	DESCRIPTION
A	X-1300006*	Motegi Lever Handle
B	X-4200068*	Valve Escutcheon
C	X-5900001	Valve Mounting Kit
D	X-4900022	Bonnet Nut
E	X-3900002C,H	Ceramic Cartridge-Cold,Hot
F	X-4900004	Supply Nut
G	X-5300012	Spout Mounting Kit
H	X-2300019*	Bent Nose Spout
I	X-4300043*	Brass Pop-Up Drain Assembly
1	X-4900044*	Hole Cover
2	X-4900002	3/32" Allen Screw
3	X-4900089*	1.5 GPM Aerator
4	X-4300084*	Spout Escutcheon

* Note: Please specify finish/color when ordering.



Product Diagram



ENGINEERING EXCELLENCE

Pioneer: 1-800-338-9468
 Commerce, CA 90040
 www.pioneerind.com
 Pioneer Industries, Inc. © 2013