



PIONEER INDUSTRIES, INC.
 3325 S. Garfield Ave.
 Commerce, CA 90040
 (800) 338-9468
 www.pioneerind.com

INSTALLATION

Tools:



Adjustable Wrench



Plumbers Putty



Teflon Tape



Rags



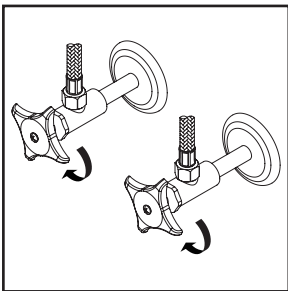
Model Number: 2LG260, 2LG261

Warnings and Notes:

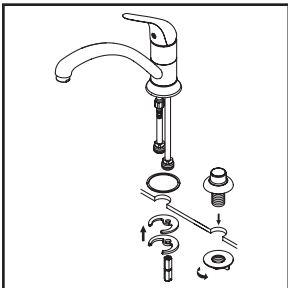
Check with local plumbing code requirements before installation.
 This product should be installed by a local listed plumber.
Do not use plumbers putty on threads.

Installation Steps:

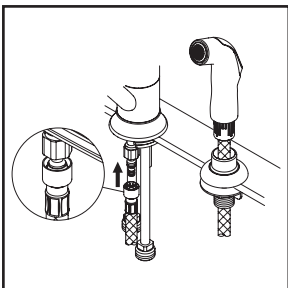
Single Handle Kitchen Faucet



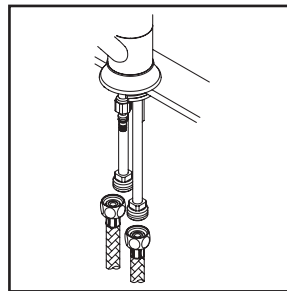
(1) Shut off the water supply. Remove old faucet. Clean mounting surface in preparation for new faucet.



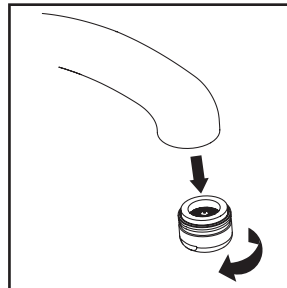
(2) Make sure gasket is under escutcheon. Insert faucet through mounting hole. Slide mounting plates through two inlet tubes and tighten locknut to the mounting bolt from underneath the sink. Go to step (4) if faucet is without side spray. Place side spray holder on mounting hole. Tighten locknut from underneath the sink to secure the side spray holder.



(3) Guide the side spray hose through the side spray holder. Insert the side spray hose quick connect adapter into faucet outlet end, push until a "click" is heard. Pull side spray hose downward to test engagement.



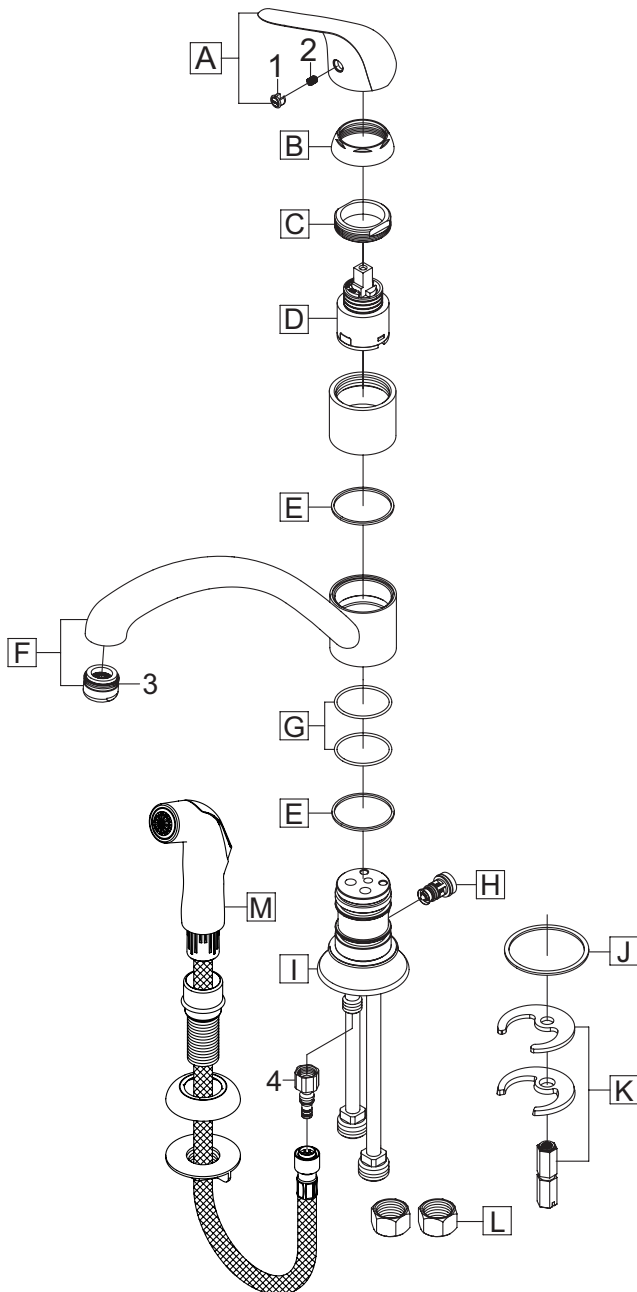
(4) When using stainless steel braided faucet supply hoses; one end of the supply hose is required to have a 1/2" female IPS connection. The other end of this supply hose must match the thread on the water supply valve under your sink. Once you've identified the required size, carefully follow the manufacturer's installation instructions for each hose.



(5) Important: After installation is complete, remove the aerator. Turn on the water and allow both hot and cold water to run for at least one minute each. While water is running, check for leaks. Turn off the water and replace the aerator when finished.

Exploded Drawing :

* Note: Please specify finish/color when ordering.



	ITEM #	DESCRIPTION
A	X-1200001*	Legacy Lever Handle
B	X-4200001*	Cap
C	X-4200002	Retainer Nut
D	X-3900001	Ceramic Disc Cartridge
E	X-4200003	Spout Gasket
F	X-2200001*	Legacy Spout
G	X-4200004	O-Ring
H	X-4200007	Diverter Piston (For 2LG261)
I	X-4200109*	Escutcheon
J	X-4200110	Gasket
K	X-5200015	Mounting Kit
L	X-4900004	Supply Nut
M	OP-420077*	Side Spray Assembly (For 2LG261)
1	X-4900001	Button
2	X-4900002	Allen Screw
3	X-4900081*	1.5 GPM Aerator
4	OP-420083	Quick Connect Adapter



For more care information or trouble shooting inquiries about your Pioneer product, please call:
Pioneer Industries, Inc. (800) 338-9468
 Monday-Friday 8 AM to 8 PM EST (5 AM to 5 PM PST)
www.pioneerind.com