



**PIONEER INDUSTRIES, INC.**  
 3325 S. Garfield Ave.  
 Commerce, CA 90040  
 (800) 338-9468  
 www.pioneerind.com

# INSTALLATION

**Tools:**



Adjustable Wrench



Plumbers Putty



Teflon Tape



Rags



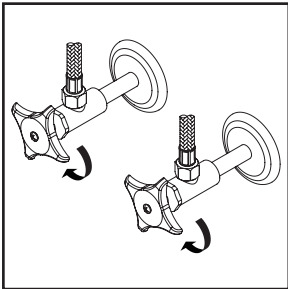
**Model Number: 2AM400, 2AM401**

**Warnings and Notes:**

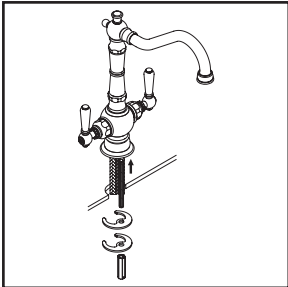
Check with local plumbing code requirements before installation.  
 This product should be installed by a local listed plumber.  
**Do not use plumbers putty on threads.**

**Installation Steps:**

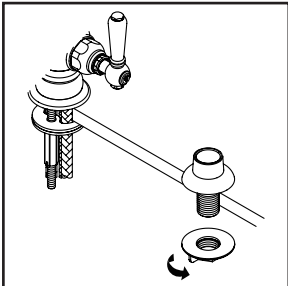
Two Handle Kitchen Faucet



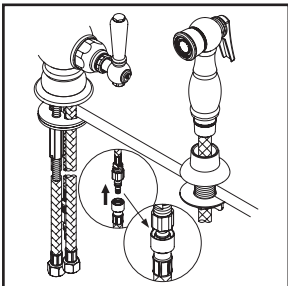
(1) Shut off the water supply. Remove old faucet. Clean mounting surface in preparation for new faucet.



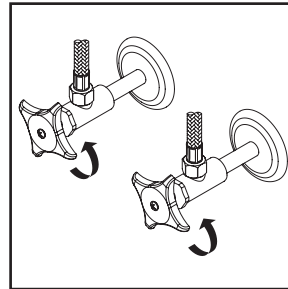
(2) Thread and tighten mounting bolt to the bottom of faucet, place escutcheon with washer under the faucet, insert faucet through mounting hole. Slide mounting washers to the mounting bolt and tighten mounting nut to mounting bolt from underneath the sink. Go to step (5) if faucet is without side spray.



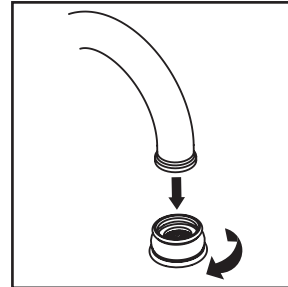
(3) For faucet with side spray, place side spray holder on mounting hole. Tighten locknut from underneath the sink to secure side spray holder.



(4) Guide the side spray hose through the side spray holder. Insert the side spray hose quick connect adapter into the faucet outlet hose end, push until a "click" is heard. Pull side spray hose downward to test engagement.



(5) Connect hot and cold inlet supply hoses to supply stops. For 1/2" connection; use 3/8" male to 1/2" female adapter for installation. Adapters are optional and not provided with the faucet. Turn on both sides of the supply stop.

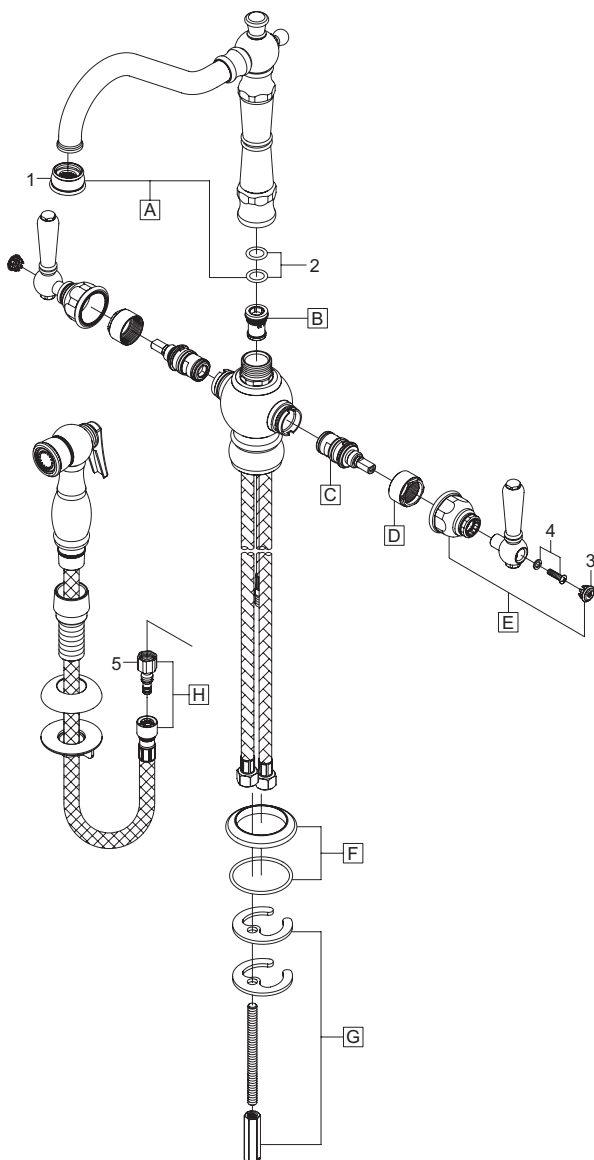


(5) Important: After installation is complete, remove the aerator. Turn on the water and allow both hot and cold water to run for at least one minute each. While water is running, check for leaks. Turn off the water and replace the aerator when finished.

## Exploded Drawing :

\* Note: Please specify finish/color when ordering.

	ITEM #	DESCRIPTION
A	X-2200012*	Americana Spout
B	X-4200016	Diverter Piston (For 2AM401)
C	X-3900004C, H	Ceramic Stem-Cold, Hot
D	X-4900022	Bonnet Nut
E	X-1200025C, H*	Lever Handle-Cold, Hot
F	X-4200062*	Escutcheon and O-ring
G	X-5900002	Mounting Kit
H	X-4200202*	Side Spray Assembly (For 2AM401)
1	X-4900091*	1.5 GPM Aerator
2	X-4900012	Spout O-Rings
3	X-4900042C, H*	Handle Button-Cold, Hot
4	X-4900043	Handle Screw
5	OP-420083	Quick Connect Adapter



For more care information or trouble shooting inquiries  
 about your Pioneer product, please call:  
**Pioneer Industries, Inc.** (800) 338-9468  
 Monday-Friday 8 AM to 8 PM EST (5 AM to 5 PM PST)  
[www.pioneerind.com](http://www.pioneerind.com)