

Highlights

16 Series

Hand-Held Shower

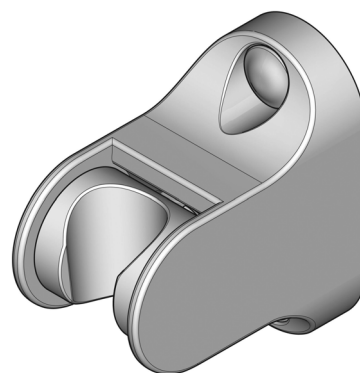
Code Compliance

Price Pfister products are designed and manufactured in compliance with the following standards and codes:

- IAPMO certified • ASME A112.18.1
- CSA B125 certified • ANSI A117.1 (Lever handles only)

| Finishes | 016-150C | 016-150E | 016-150K | 016-150U | 016-150Y |
|-----------------|----------|----------|----------|----------|----------|
| Rustic Bronze | | | | x | |
| Tuscan Bronze | | | | | x |
| Rustic Pewter | | x | | | |
| Polished Chrome | x | | | | |
| Satin Nickel | | | x | | |

| Features | 016-150C | 016-150E | 016-150K | 016-150U | 016-150Y |
|--|----------|----------|----------|----------|----------|
| Coordinates with Matching Handshower | x | x | x | x | x |
| Wallmount | x | x | x | x | x |
| Step-By-Step Installation Instructions | x | x | x | x | x |
| Pforever Warranty® | x | x | x | x | x |



- 016-150C
- 016-150E
- 016-150K
- 016-150U
- 016-150Y

For additional information, please contact your Price Pfister representative, or visit our website at www.pricepfister.com.

Project: _____

Contractor: _____

SS-016-06

1-800-PFAUCET www.pricepfister.com
 19701 DaVinci, Lake Forest, CA 92610
 05/21/08

Price Pfister®
 Pfreshest Ideas in Pfaucets.