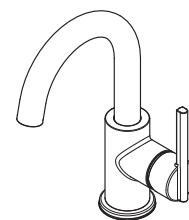


- LG42-BI3C Finish(C) ☐
- LG42-BI3K Finish(K) ☐
- LG42-BI3SDB Finish(SDB) ☐



Specifications

Features

- 1.0 GPM Flow Rate
- Deckplate Not Included, Order 961-299* Separately
- Fixed Spout
- Forward Handle Operation
- Push & Seal™ Pop-Up
- Nylon Flex-Line Supply Lines
- TiteSeal™ Technology
- UltraSeal™ Ceramic Disc Valve
- Limited Lifetime Warranty



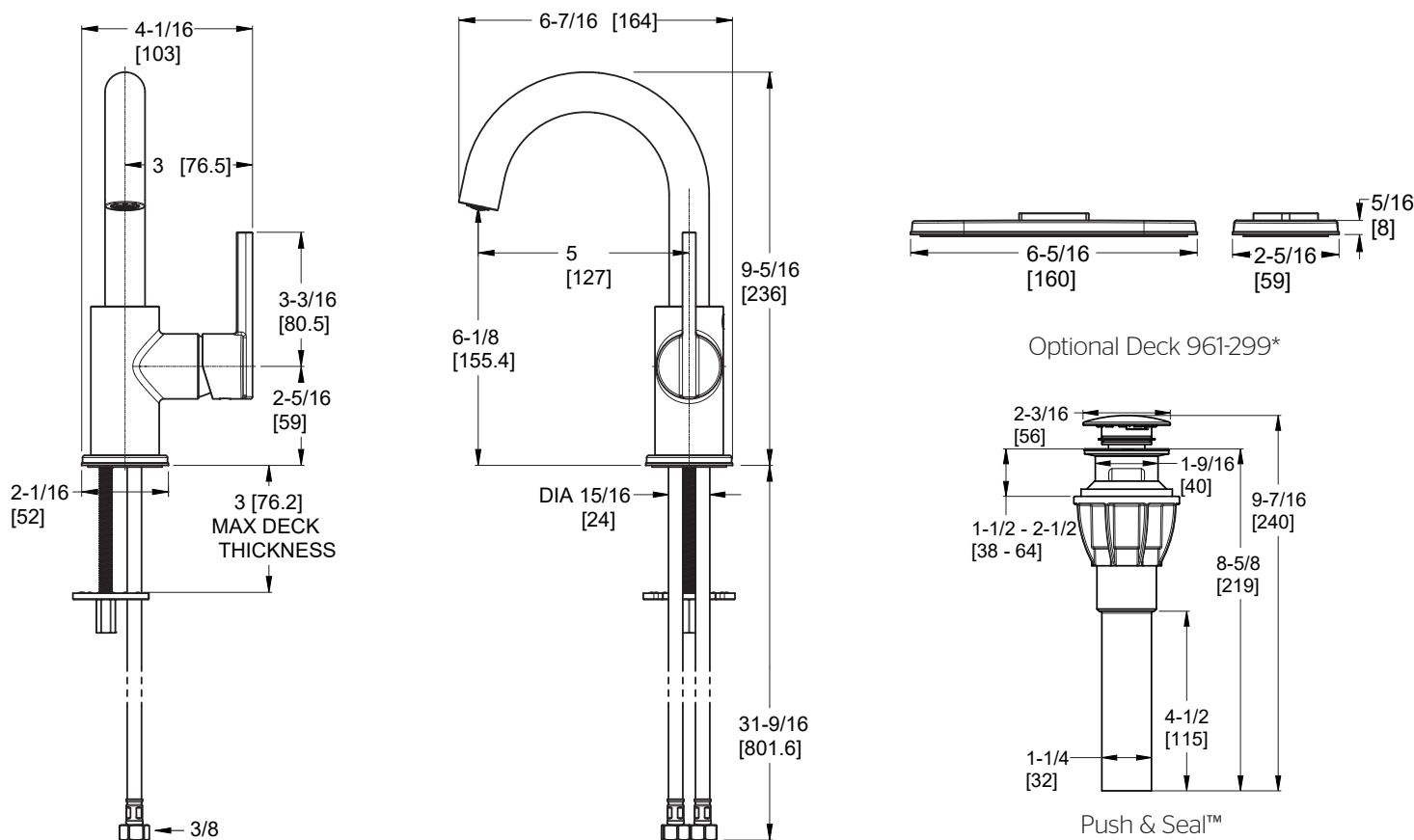
Code Compliance

Pfister products are designed and manufactured in compliance with the following standards and codes:

- IAPMO Certified to ASME A112.18.1/CSA B125.1
- EPA WaterSense Certified
- NSF/ANSI/CAN61:Q≤1
- CEC Certified/CALGreen compliant
- ADA Compliant - ANSI A117.1 (Lever Handles Only)



Dimensions



Ø1 Min to Ø1-1/2 Max. Deck Hole Openings