

Personal Assistance, Product Specs, & "How-to" Questions:

Asistencia personal, especificaciones del producto y preguntas sobre "cómo hacerlo":

Aide personnelle, spécifications du produit et questions "pratico-pratiques":

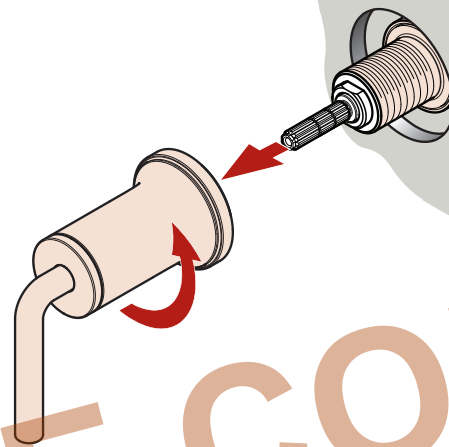
1-800-732-8238

pfisterfaucets.com

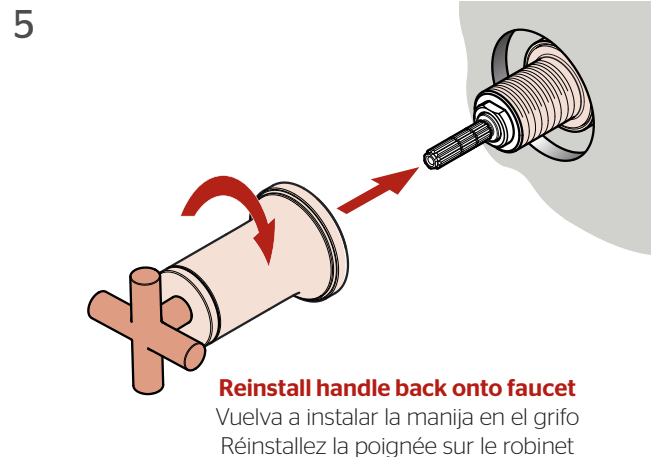
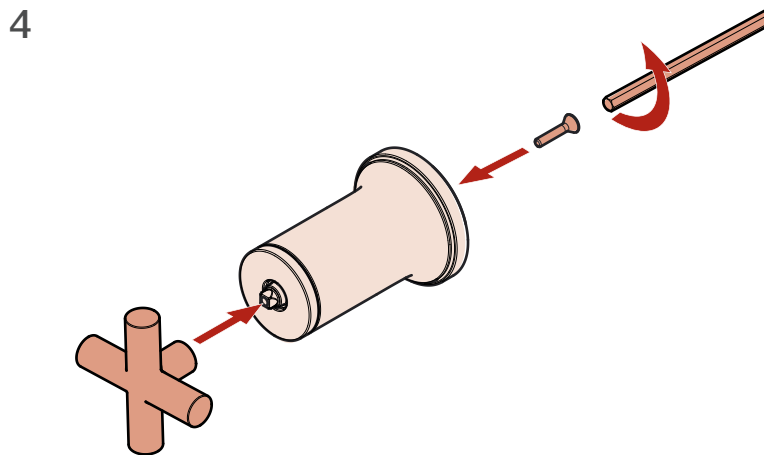
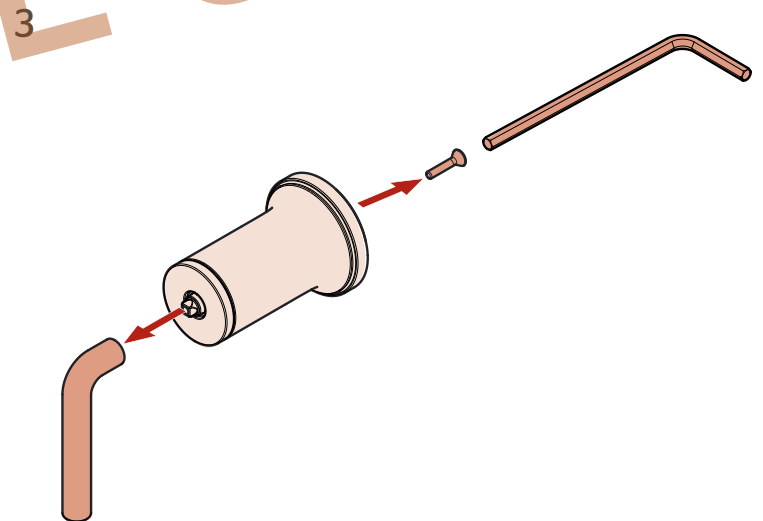
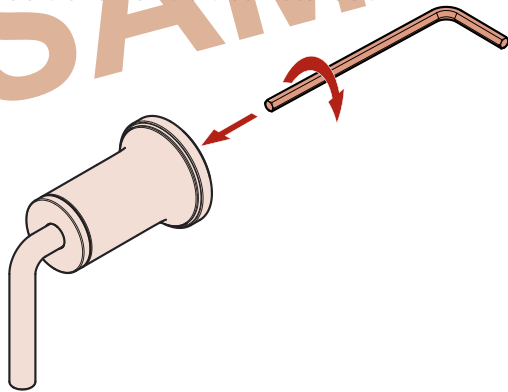
For • Por • Pour: 016-TNT1

LG16-3TNT/LG16-TNT on the reverse side • Gire al reverso para/ Tourner vers le verso pour: LG16-3TNT/LG16-TNT

- 1 **Uninstall handle**
Desinstale el mango
Désinstaller la poignée



- 2 **Uninstall lever handles**
Desinstalar el mango de la palanca
Poignée de levier de désinstallation



Personal Assistance, Product Specs, & "How-to" Questions:

Asistencia personal, especificaciones del producto y preguntas sobre "cómo hacerlo":

Aide personnelle, spécifications du produit et questions "pratico-pratiques":

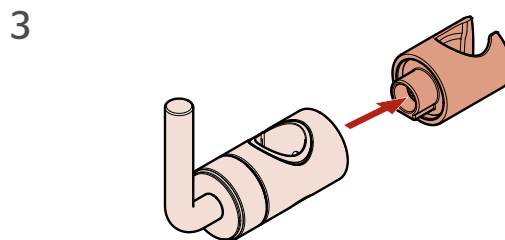
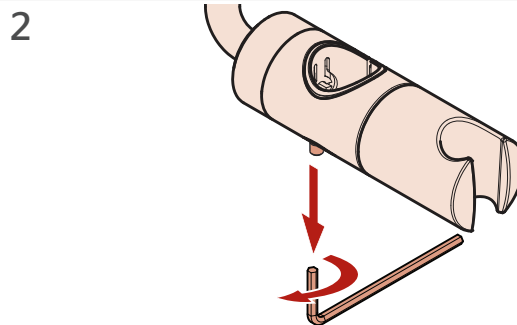
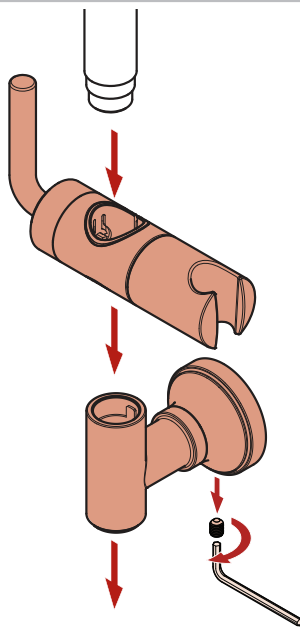
1-800-732-8238

pfisterfaucets.com

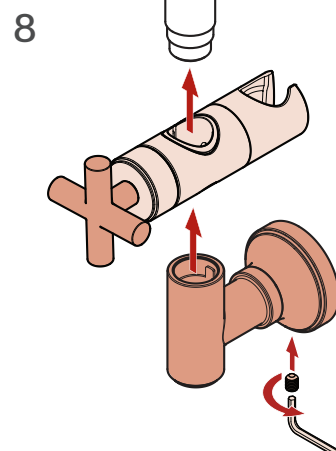
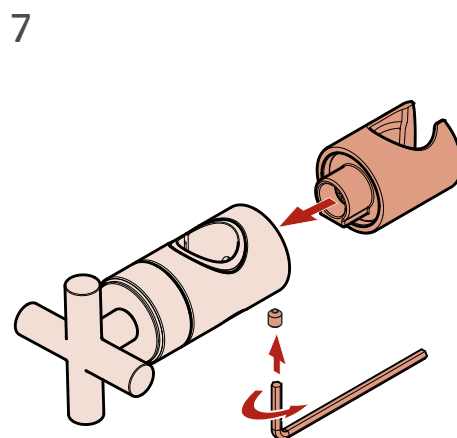
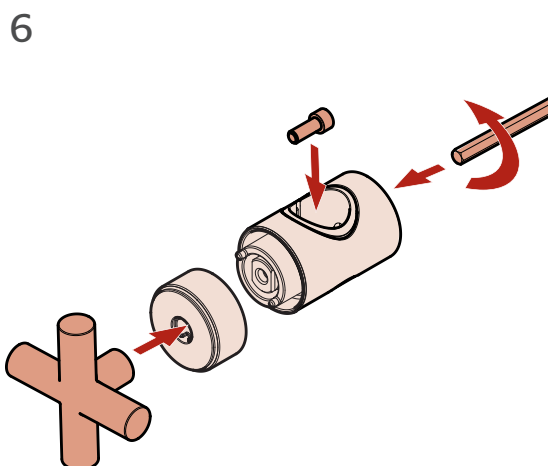
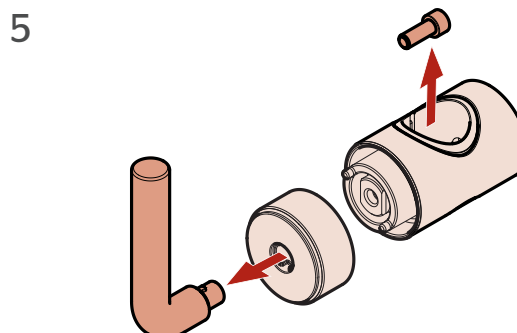
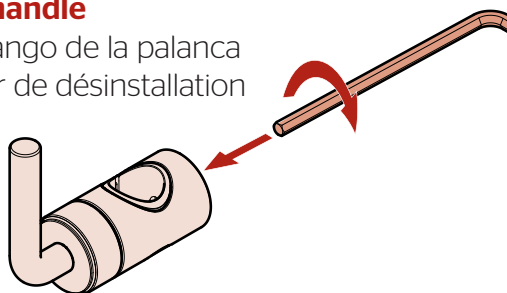
For • Por • Pour: LG16-3TNT/LG16-TNT

O16-TNT1 on the reverse side • Gire al reverso para O16-TNT1 • Tourner vers le verso pour O16-TNT1

- 1 **Uninstall cradle**
Desinstale la cuna
Désinstaller berceau



- 4 **Uninstall lever handle**
Desinstalar el mango de la palanca
Poignée de levier de désinstallation



Reinstall cradle back onto bar
Vuelva a instalar la base en la barra
Réinstallez le berceau sur la barre