

# 24" ADA-COMPLIANT SERIES BEVERAGE CENTER

HA24BB-3 | 24" INDOOR MODEL

**Perlick**<sup>®</sup>  
QUALITY & INNOVATION  
THAT **INSPIRES**



Solid Door Model



Glass Door Model



Intertek

## GENERAL 24" ADA-COMPLIANT SERIES FEATURES

- 32" height with leveling legs
- 525 Btu commercial-grade compressor
- Front-vented, RAPIDcool forced-air refrigeration system
- Commercial-grade stainless steel interior and black vinyl-clad exterior
- **Industry Exclusive** adjustable, full-extension pull-out shelves
- Stainless-steel ball-bearing glides provide smooth movement of shelves
- Low E, UV-coated glass provides industry leading insulation and protection.
- Electromechanical temperature control
- Interior light
- Optional door locks and Industry-Exclusive drawer locks (factory installed)
- Stacking kit available
- Also available - ADA Compliant Freezer, Refrigerator, Wine Reserve and 15" Clear Ice Maker
- 4.8 cubic feet of capacity
- Industry Best Three Year Warranty plus additional three years on sealed system

## HA24BB-3 FEATURES

- Available with solid stainless steel door, wood overlay door, stainless steel glass door or wood overlay glass door
- Includes two (2) full-extension pull-out wine shelves to accommodate eight (8) bottles each and one (1) full-extension pull-out shelf
- Beverage Center temperature 35° - 48°F

Form No. HA24BB-3  
Rev. 02.09.2017

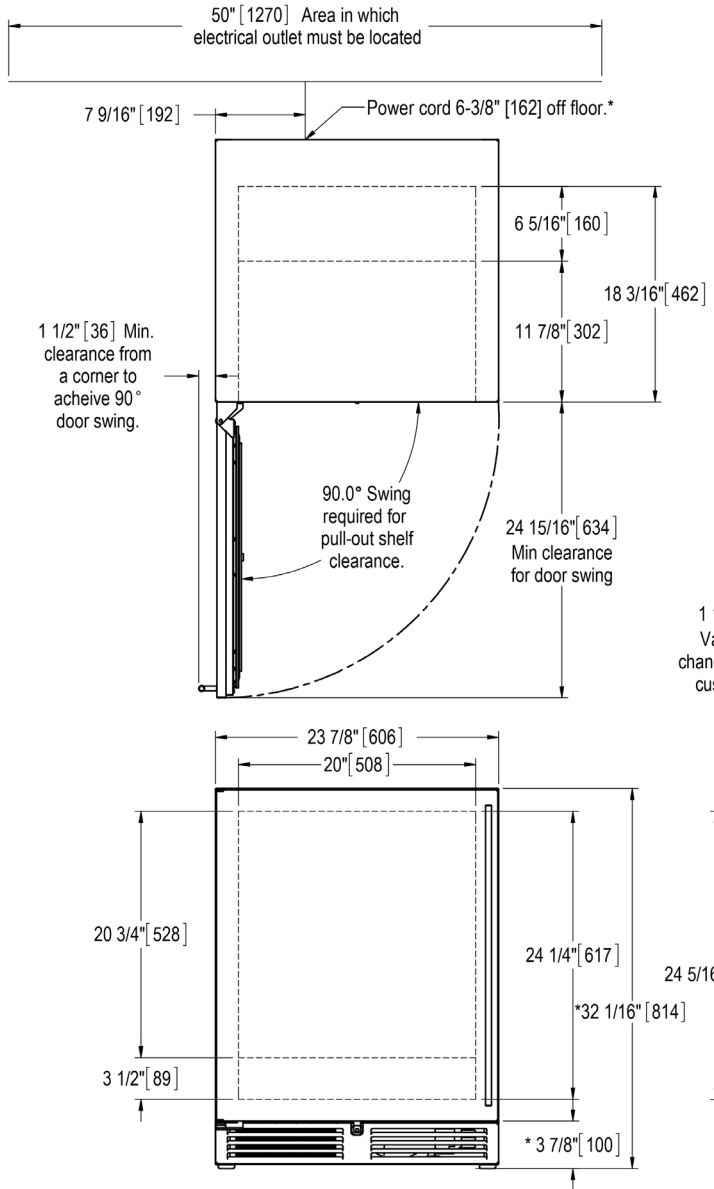
## PRODUCT SPECIFICATIONS

<b>Overall Width</b>	23-7/8" (606 mm)
<b>Overall Height</b>	32" (814 mm)
<b>Overall Depth</b>	24" (611 mm)
<b>Opening Width</b>	24" (611 mm)
<b>Opening Height</b>	32-1/8" (816 mm)
<b>Opening Depth</b>	24" (611 mm)
<b>Refrigerated Volume</b>	4.8 cu. ft total
<b>Door Swing Clearance</b>	25" (634 mm)
<b>Electrical</b>	115V, 60Hz., 1 Phase, 2.3 amps
<b>Plumbing</b>	None Required
<b>Shipping Weight</b>	181 lbs (82.27 kg)
<b>Annual Energy Consumption</b>	295 kWh

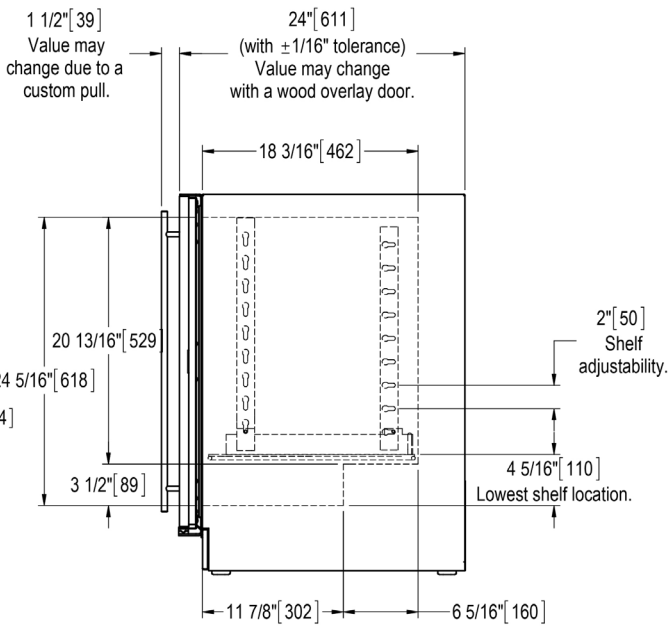
## INDOOR MODELS

<b>HA24BB-3-1L*</b>	Solid stainless steel door, hinged left
<b>HA24BB-3-2L*</b>	Solid wood overlay door, hinged left
<b>HA24BB-3-3L*</b>	Stainless steel glass door
<b>HA24BB-3-4L*</b>	Wood overlay glass door

\*Also available with right hinge



\* - Leg levelers can add 3/4" [19] to these dimensions when fully extended.



Form No. HA24BB-3  
Rev. 02.09.2017