



STEP 1 • REVIEW INSTALLATION CHECKLIST

- Do not push parts into track until ready to install in final position.
- Do not remove from track once installed.
- Use a new saw blade for best cutting results.
- Depending on molding type, all parts may NOT be used.
- Always install screws in end holes of track and then every other hole.
- For concrete floors, drill hole using $\frac{3}{16}$ " (5mm) diameter drill, insert plastic anchor, then use screw.
- Attach the track directly to the subfloor (remove any padding or underlayment).
- Laminate flooring installations require the use of T-Moldings in doorways 4 feet (1.22 meters) or less and in rooms 40 feet (12.2 meters) or larger in length or width.
- This product has been finished for you; do not sand or paint.

STEP 2 • CHOOSE YOUR TRANSITION TYPE

Kit allows assembly of four different molding options from one single product

A. T-Molding

Transitions between hard surface floors of equal height

B. Carpet Transition

Finishes a hard surface floor where it meets carpet

C. Hard Surface Reducer

Transitions between hard surface floors of different heights

D. End Molding

Finishes a hard surface floor at sliding doors, fireplaces and other fixed edges

STEP 3 • INSTALL YOUR MOLDINGS

Each individual package includes the following:



Part #1



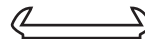
Part #2



Part #3



Track



Shim



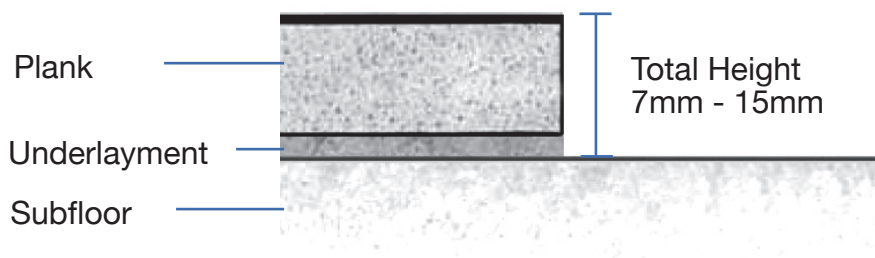
Screws



Plastic Anchors



Accommodates 7mm to 15mm Floor Thickness

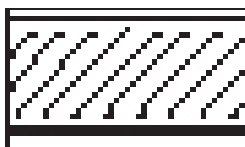


Total Height = Plank + Underlayment

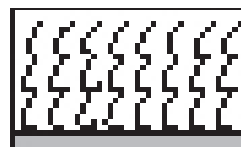
- $\frac{9}{32}$ " to $\frac{15}{32}$ " (7mm to 12mm) - Track only
- $\frac{15}{32}$ " to $\frac{9}{16}$ " (12mm to 14mm) - Track plus snap on plastic shim
- $\frac{9}{16}$ " to $\frac{19}{32}$ " (14mm to 15mm) - Track over reversed plastic shim

SYMBOL KEY

Laminate Flooring



Carpet



Hard Surface Flooring



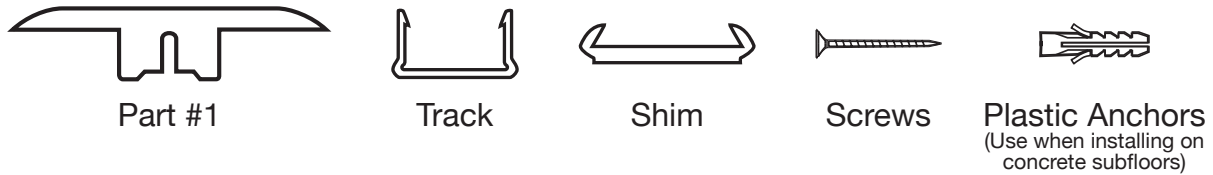
Subfloor



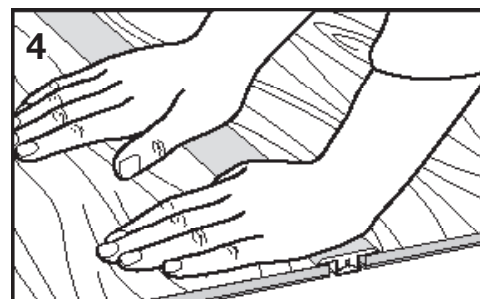
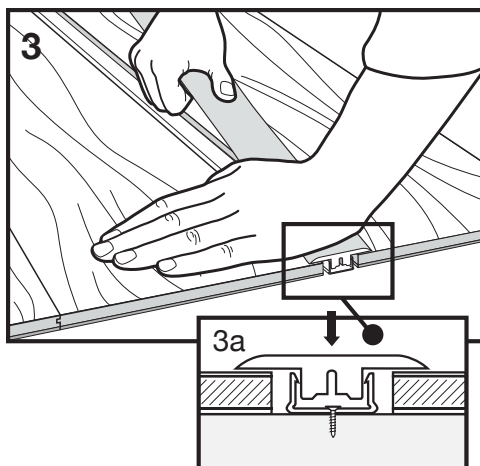
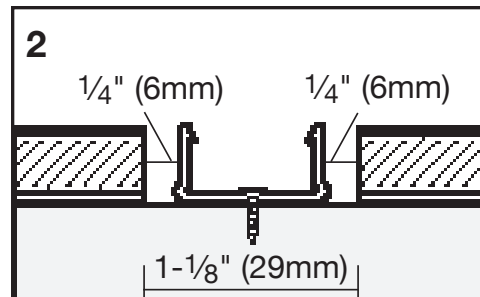
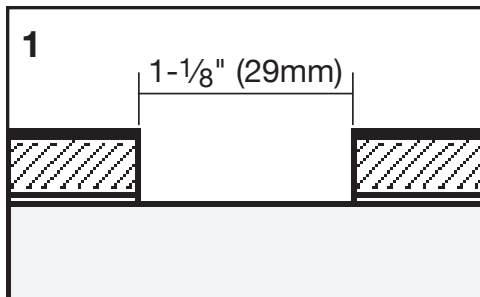


A T-MOLDING

Use Part #1



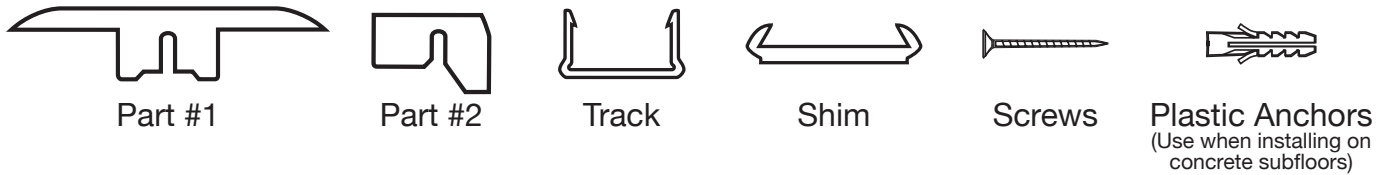
1. Leave a 1-1/8" (29mm) space between flooring as shown.
2. Install track in position with screws as shown. Leave 1/4" (6mm) expansion space on both sides of track.
3. Start at one end. Firmly push Part #1 down into track.
4. Continue to push down firmly into track, working from one end to the other.



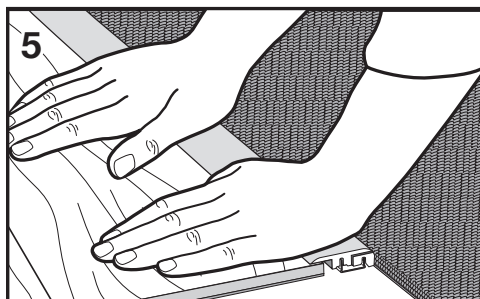
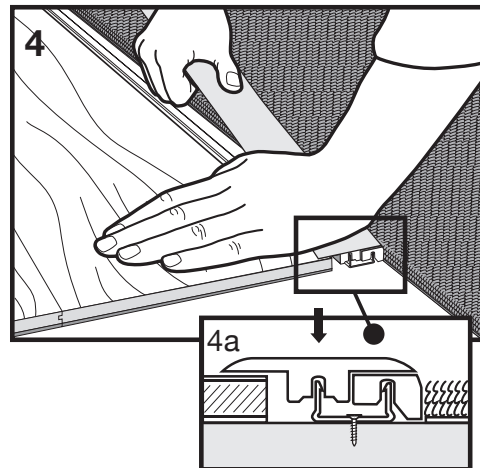
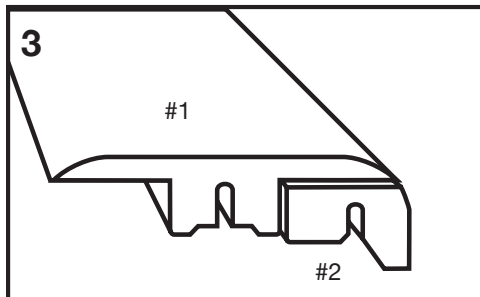
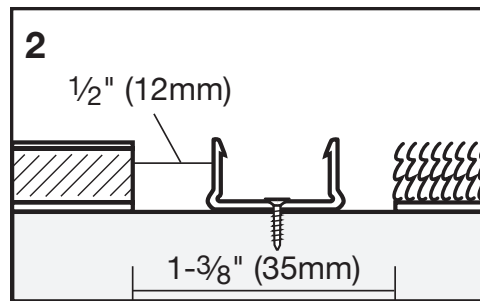
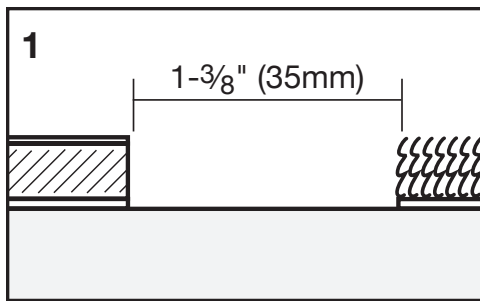


B CARPET TRANSITION

Use Part #1 and Part #2



1. Leave a 1-3/8" (35mm) space between laminate flooring and carpet as shown.
2. Install track in position with screws as shown. Leave 1/2" (12mm) expansion space between track and laminate flooring.
3. Hold part #1 and part #2 together as shown.
4. Start at one end and push down firmly into track while holding part #1 and part#2 together.
5. Continue to push down firmly into track, working from one end to the other.





C HARD SURFACE REDUCER

Use Part #1 and Part #2



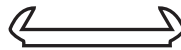
Part #1



Part #3



Track



Shim

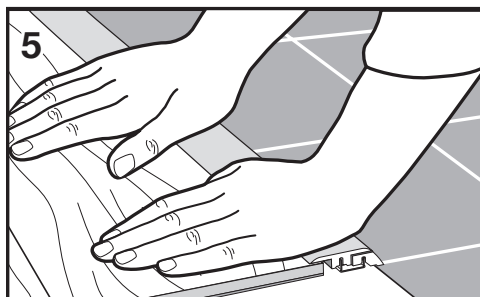
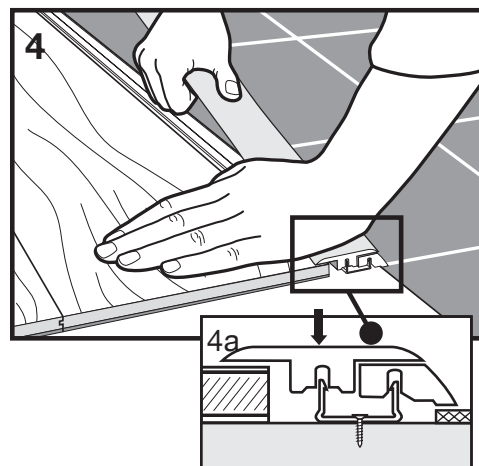
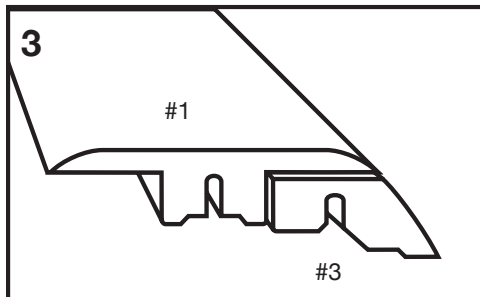
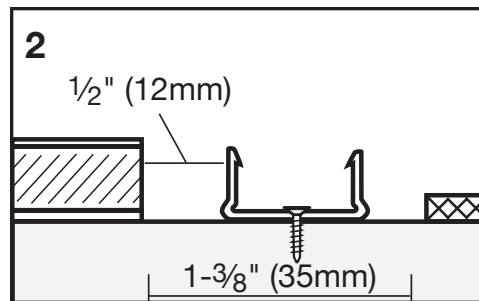
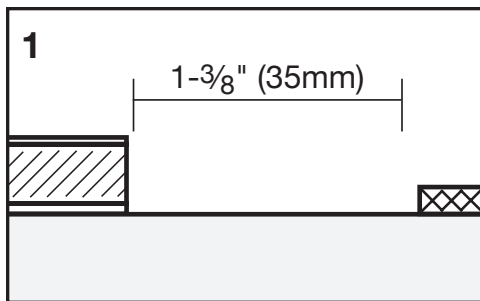


Screws



Plastic Anchors
(Use when installing on
concrete subfloors)

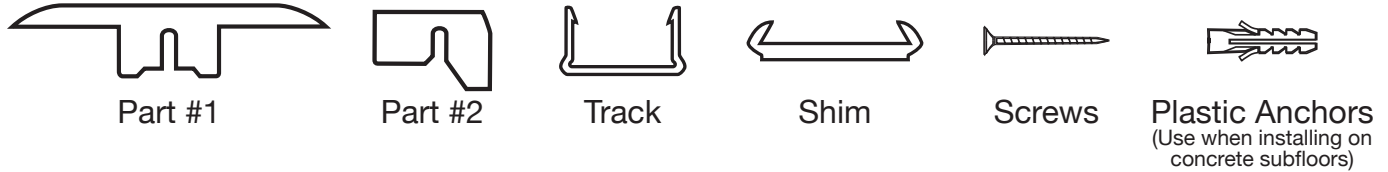
1. Leave a 1-3/8" (35mm) space between laminate flooring and hard surface as shown.
2. Install track in position with screws as shown. Leave 1/2" (12mm) expansion space between track and laminate flooring.
3. Hold part #1 and part #3 together as shown.
4. Start at one end and push down firmly into track while holding part #1 and part#3 together.
5. Continue to push down firmly into track, working from one end to the other.





D END MOLDING

Use Part #1 and Part #2



1. Leave a 1-3/8" (35mm) space between laminate flooring and vertical edge as shown.
2. Install track in position with screws as shown. Leave 1/2" (12mm) expansion space between track and laminate flooring.
3. Hold part #1 and part #2 together as shown.
4. Start at one end and push down firmly into track while holding part #1 and part#2 together.
5. Continue to push down firmly into track, working from one end to the other.
6. Fill any space between end molding and vertical surface with 100% silicone sealant.

