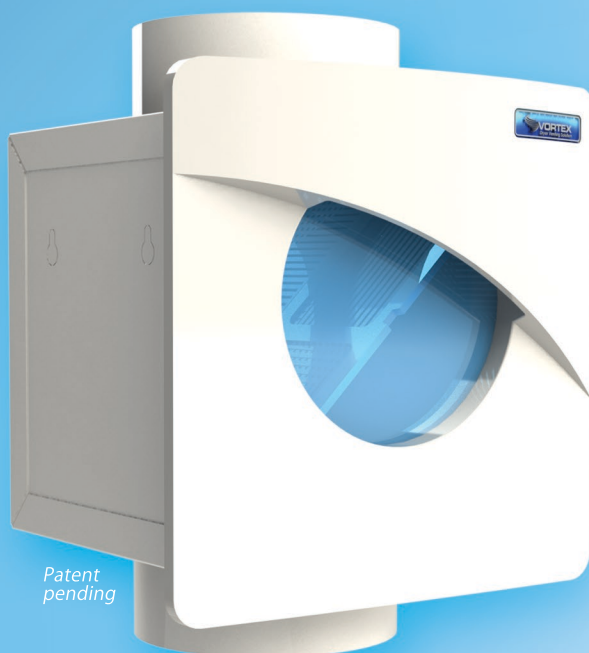


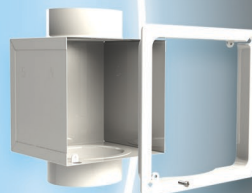


Lint Trap LT4

Empowered by Innovation



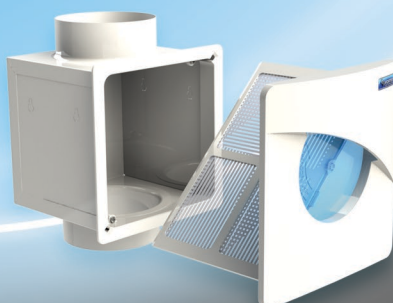
- Powder coated 24Ga galvanized steel box with 4" adapters.



- Fast and easy installation with finishing frame.



- 4" window to monitor lint accumulation.



- LT4 box is equipped with a screen that filters the air that feeds into the dryer exhaust fan. The screen catches any airborne lint in the ductwork that isn't caught by the dryer's lint screen.

The less lint accumulation, the better your dryer performs.

Airborne lint from your home's dryer may accumulate in the exhaust duct causing clogging issues. Lint in the ductwork can quickly become a serious fire hazard. The secondary Lint trap installed between the dryer and the dryer exhaust ventilator filters the air, catches the lint and protects the exhaust fan and ductwork.



2480 Boul. des Entreprises Terrebonne, Quebec J6X 4J8 CANADA
T: 450.477.1100 F: 514.313.5700 TF: 1.800.489.1301
WWW.ATMOSPHERE.COM

FEBRUARY 2020

Customer support : info@atmosphere.com
Sales inquiries : sales@atmosphere.com

Panasonic

**Panasonic is the exclusive distributor of
Atmosphere products in the US**

Panasonic IAQ Division
Two Riverfront Plaza
Newark, NJ 07102
na.panasonic.com/us/iaq

For Order Information
PHONE: 866-292-7299
FAX: 888-553-0723
ventfans@us.panasonic.com

Design and specifications subject to change without notice.