

Atmosphere Vortex® - Dryer Exhaust Duct Power Ventilator



Models:

DBF-DEDPV (4" duct dimension)



Exhaust Fan with Integrated Lint Trap

Solving the problem in locations with longer duct lengths, this smart, in-line venting solution improves venting for commercial and residential clothing dryers especially as dryer locations are more variable in today's construction landscape.

KEY FEATURES

Integrated Lint Trap - 50 square inches of nylon mesh.

Energy Efficient - Reduces drying time and power consumption with a pressure switch that senses dryer operation to energize the fan. Maintains 1,200 FPM air velocity by a backward curved impeller that boosts power up to 130'.

Overheating Warning - Temperature limit device shuts down the fan and triggers an alarm.

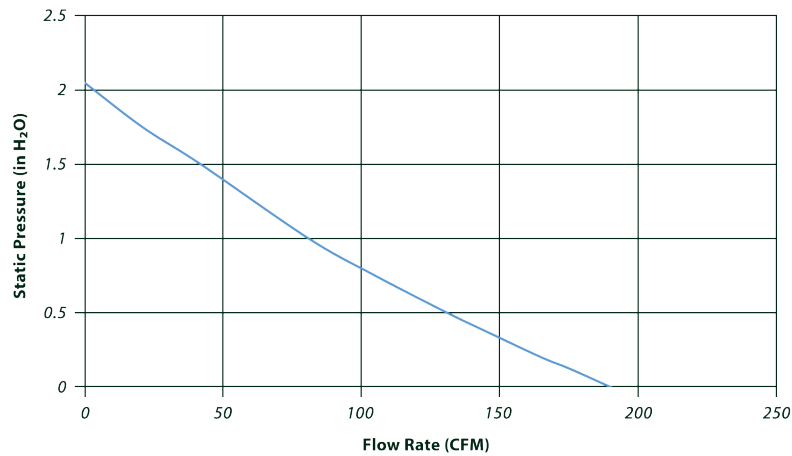
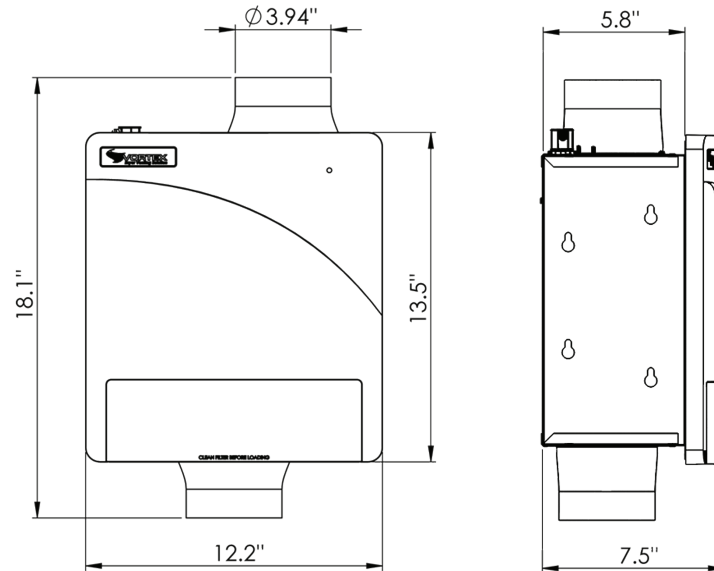
10-Year Warranty

Other Details

- LED Light on front panel indicates proper or problematic fan operation to the dryer operator.
- Quick and easy maintenance cleaning by removing the unit from the housing.
- Wall-mounted installation.



DBF-DEDPV View & Sizes



Performance Data

ALL VTX PRODUCTS INCORPORATE MOTORS SUITABLE FOR 120 Volts AC 60Hz ELECTRICAL SUPPLY ONLY
 Static Pressure in Inches W.G.

FAN MODEL	Duct Dia.	RPM	Volts	Rated Watts	Max Amos	0"	0.125"	0.2"	0.25"	0.375"	0.5"	0.75"	1"	1.25"	1.5"	2"	Max Ps
DBF-DEDPV	4"	2970	120	68	0,56	192	182	176	172	163	154	130	105	77	50	0	2.004

Performance certified is for installation type D - Ducted outlet. Speed (RPM) shown is nominal. Performance is based on actual speed of test.
 Performance ratings include the effects of appurtenances (accessories) Inlet Duct, Inlet Duct, Inlet Bell, Outlet Duct