

OMNIA Pocket Door Hardware

Product Data

Pocket Door Locksets

- **Backset:** 2 1/2"
- **For Door Thickness:** 1 3/4" thick as a standard, adjustable for 1 3/8" thick.
- **Case:** Stamped from heavy wrought steel with zinc dichromate finish for corrosion resistance.
- **Front:** Armored steel front adjustable for beveled doors, with an 8" x 1" solid brass faceplate. Finished to match trim.
- **Deadbolt:** 1/2" thick x 1 1/4" high x 1" throw, stainless steel, finished with US32D or PVD US4.
- **Pull:** 1/2" thick x 2" high x 1 1/4" throw, stainless steel, finished with US32D or PVD US4. Push button ejected with spring assistance.

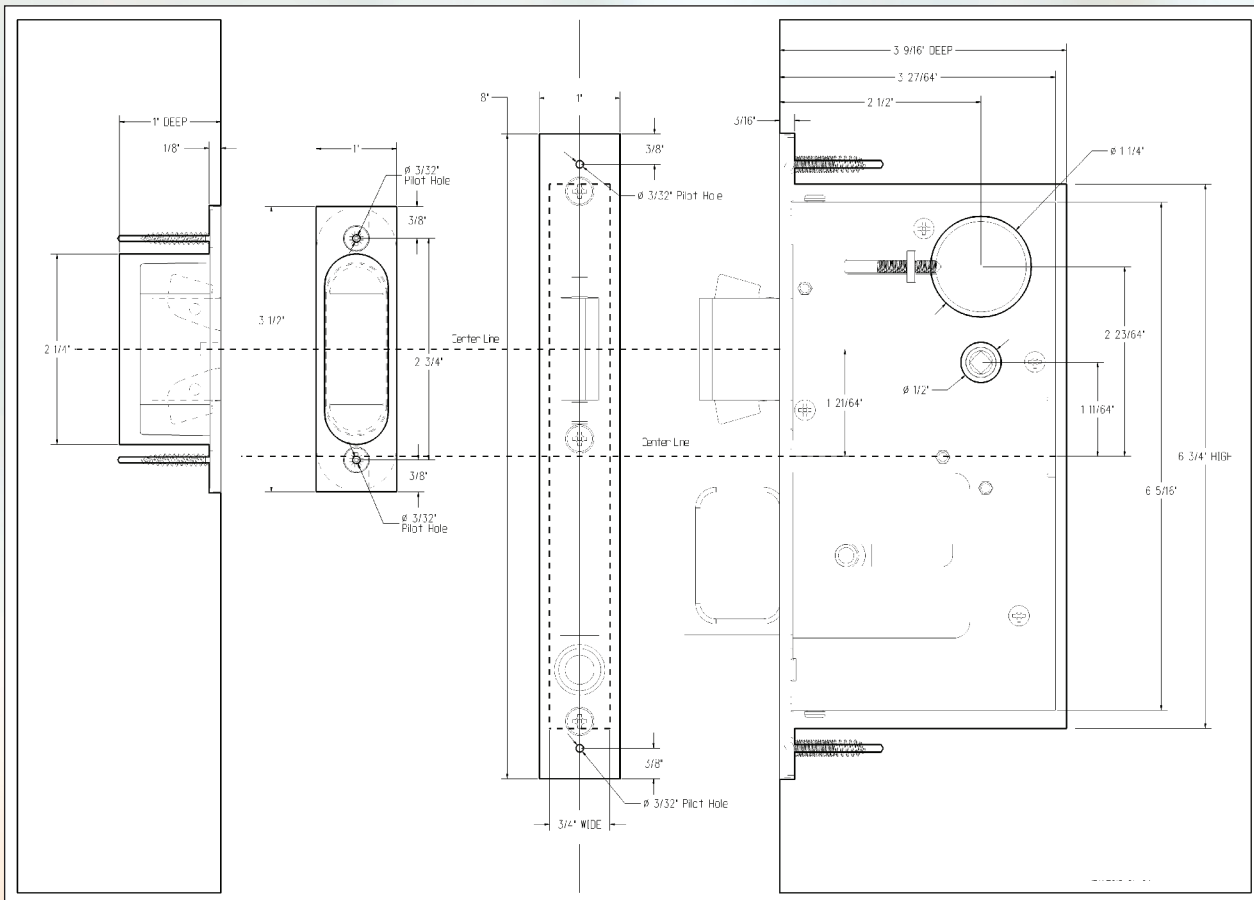
- **Strike:** Stainless steel for US32D or brass and plated finish to match trim. Black plastic dust box supplied as a standard.
- **Cylinder:** Solid brass from bar stock, Schlage "C" keyway with two OMNIA nickel silver keys.

ALL MOUNTING SCREWS ARE SUPPLIED WITH SETS.

Available Functions*

- **Privacy "L"** – Backplates (2) with emergency release outside x thumbturn inside, and includes lockbody
- **Entry "A"** – Backplates (2) with cylinder outside x thumbturn inside, and includes lockbody
- **Flushcup Only "O"** – Backplate (1) blank

Please Note:
Edge Pull 7653 is also available.



How to Order

EXAMPLE Design Function* Finish** Example product order number
7035 / L . 26 would be **7035/L.26**
*See Function Codes Above **See Finish Codes on Pages 2 & 3