



INSTALLATION

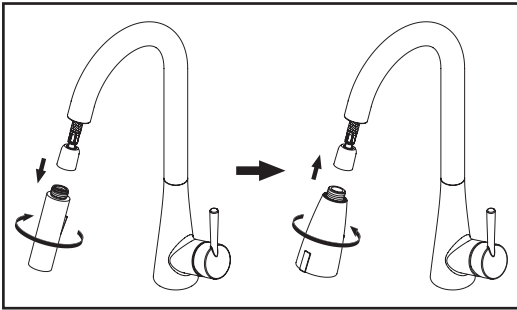
OLYMPIA FAUCETS, INC.
3325 S. Garfield Ave.
Commerce, CA 90040
(888) 772-7701
www.olympiafaucets.com



Model Number: OP-420092

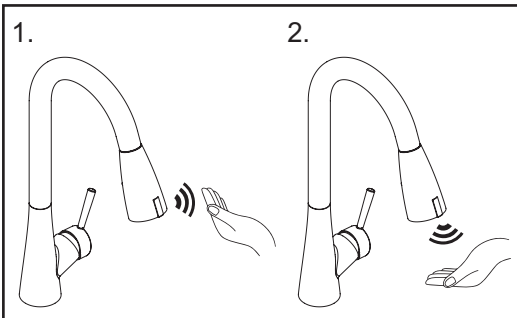
Installation Steps:

Sensor Spray Head



1. Remove the static film on the sensor window before using the faucet, then the sensor will work after 5-15 seconds.
 2. Close the faucet handle and angle valve, and disassemble the hot and cold supply hoses from angle valve, then install the metal adapters on the angle valve and tighten up, finally install the supply hoses.
 3. Demount the used spray head from the pull down hose, then connect the touchless spray head with pull down hose and screw them up, finally adjust the sensor position.
- Marks: Suggest keeping the used spray head so that to replace touchless spray head which power off and need to be dismounted to charge.
4. Open the angle valve and faucet handle to check the faucet's performance, If it doesn't work well, please check it based on the trouble shooting list.

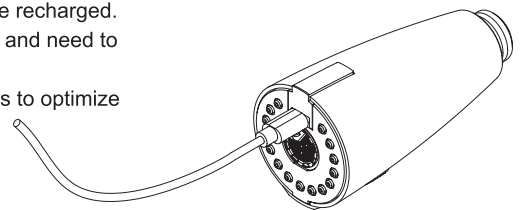
Function Features:



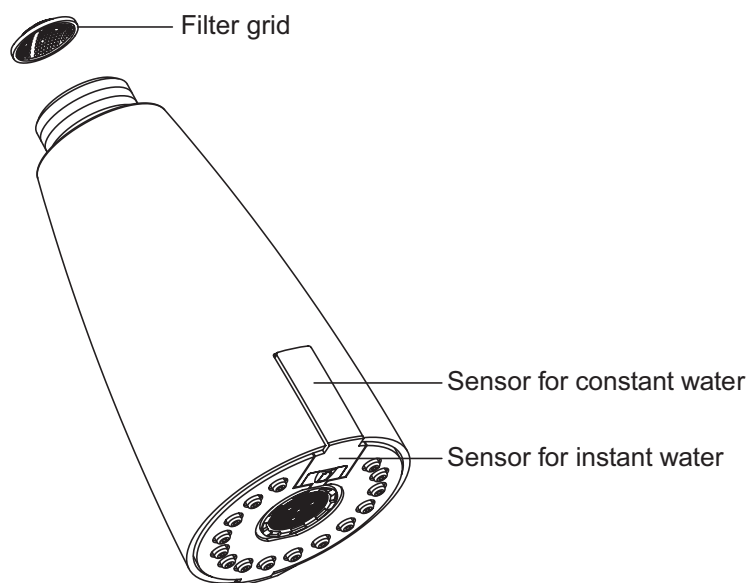
1. Constant water sensor: Wave your hand in front of the upper sensor area, the faucet will water on automatically, and wave again to water off.
2. Instant water sensor: Move your hand under the bottom sensor area, the faucet will water on automatically, and move your hand away the faucet will water off automatically.
3. Time-up protection: The spray head will stops automatically when continuous running water exceed 3 minutes to avoid users forget to turn off the faucet.

Cautions:

1. Charging: Before charging the spray head, please turn off the faucet handle and remove the spray head first, then dry with tissues and open the rubber USB cover on the spray head to charge.
(The indicator light will be lighted during charging and off after fully charged. Unplugged the cable power from spray head can be used after 5 seconds.)
 - a. The indicator light continuous flashing 5 times slowly means the power is low and need be recharged.
 - b. The indicator light continuous flashing fast and do not work mean that the power runs out and need to recharge immediately.
2. For long-term non-use of the spray, please store it in dry area and recharge every 6 months to optimize product lifetime.
3. To clean the filter grid, please turn off the faucet handle first and remove the spray head, then take out the filter grid to clean it up and assemble it back.
4. Please use the clean and soft cloth to wipe the spray head surface. (strong detergents are not allowed to use on product).



Parts Name:



Basic trouble shooting list:

Specific issue	Typical Cause	Possible Solutions
Water does not flow from the faucet when activated by infrared sensor	Faucet handle is closed or angle valve not open	Open the faucet handle fully, and turn on the angle valve
	There are dirt or water drops on the sensor window	Use soft cloth to wipe the sensor window gently
	Low battery power (indicator continuously flashing)	Charge the spray head
	The battery start low voltage cutoff mode.(no flashing from indicator)	When the battery switch into low voltage cutoff mode, please recharge the battery at least 15 minutes as soon as possible to wake up the battery within 30 days
Water flow is low during the faucet is activated by sensor	Filter grid clogging	Clean up the filter grid
	Low water pressure	Increase the household water pressure
Unable to turn off the water	There is obstacle or drip on the surface of sensor	Clean the obstacle and drip



For more care information or trouble shooting inquiries about your Olympia product, Please call:
OLYMPIA FAUCETS, INC. (888) 772-7701
 Monday-Friday 8 AM to 8 PM EST (5 AM to 5 PM PST)
www.olympiafaucets.com