



OLYMPIA FAUCETS, INC.
3325 S. Garfield Ave.
Commerce, CA 90040
(888) 772-7701
www.olympiafaucets.com

INSTALLATION

Tools:



Adjustable Wrench Phillips screwdriver Plumbers Putty Teflon Tape Rags

Model Number: K-5080

Warnings and Notes:

Check with local plumbing code requirements before installation.

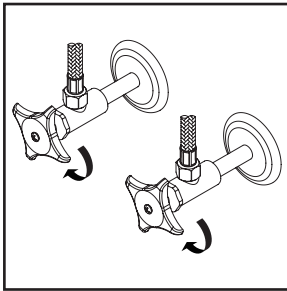
This product should be installed by a local listed plumber.

Do not use plumbers putty on threads.

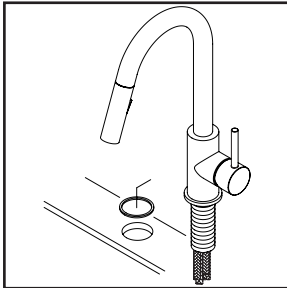


Installation Steps:

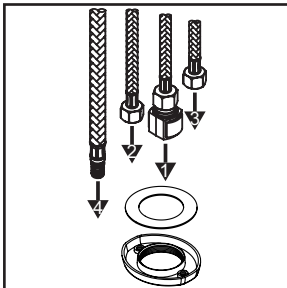
Single Handle Pull-Down Kitchen Faucet



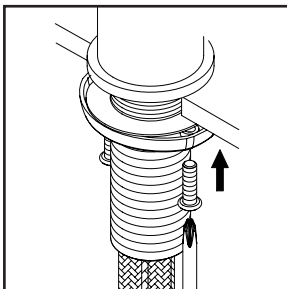
(1) Shut off the water supply. Remove old faucet. Clean mounting surface in preparation for new faucet.



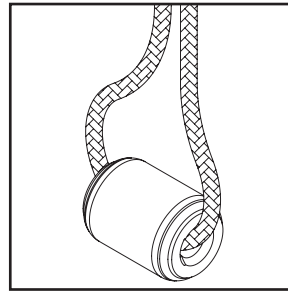
(2) Ensure there is a washer under the faucet. Place the faucet in position on the sink.



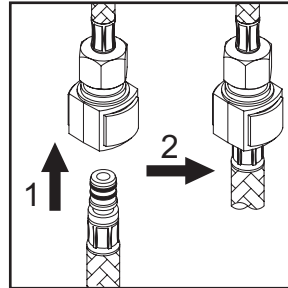
(3) With flat side of the locknut facing down and the steel washer inside the locknut please follow the order as the drawing shows to insert flex hoses through the center hole of the locknut from underneath the sink.



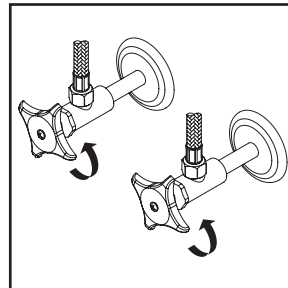
(4) Thread locknut onto the faucet shank from underneath the sink. Position faucet to desired location from the top and hand-tighten locknut till it won't go further. Thread both screws on locknut and tighten screws on locknut with the help of a Phillips head screwdriver to secure faucet. (Note: Do not overtighten.)



(5) Slide rolling weight through spray head hose.



(6) Insert spray head hose into end of quick connect adapter on the outlet hose, push until a "click" is heard. Pull down to test engagement.

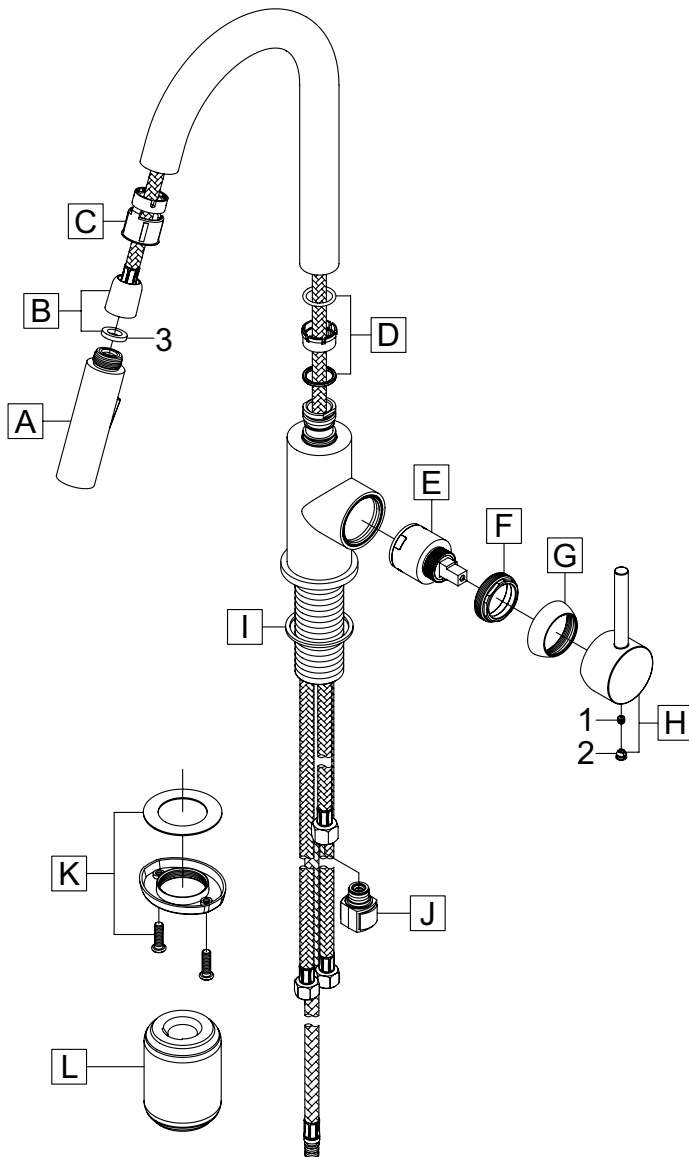


(7) Connect hot and cold inlet supply hoses to supply stops. For supply stop with 1/2" outlet connection, use 3/8" male to 1/2" female adapter for installation. Adapters are optional and are not provided with the faucet. Turn on both side supply stops to check any leaks.

Exploded Drawing:

* Note: Please specify finish/color when ordering.

	ITEM #	DESCRIPTION
A	X-4200194*	1.5 GPM Spray Head
B	OP-420096	Spray Head Hose
C	OP-420095	Magnetic Spray Head Support
D	X-4200190	Spout Repair Kit
E	X-3900008	Ceramic Disc Cartridge
F	X-4900018	Retainer Nut
G	X-4900017*	Cap
H	X-1900008*	Lever Handle
I	X-4200076	Gasket
J	X-4200199	Quick Connect
K	OP-520015	Locknut with Screws
L	OP-420094	Rolling Weight
1	X-4400024	Allen Screw
2	X-4900044*	Hole Cover
3	OP-420075	Washer



OLYMPIA

For more care information or trouble shooting inquiries about your Olympia product, Please call:
OLYMPIA FAUCETS, INC. (888) 772-7701
 Monday-Friday 8 AM to 8 PM EST (5 AM to 5 PM PST)
www.olympiafaucets.com