



**OLYMPIA FAUCETS, INC.**  
 3325 S. Garfield Ave.  
 Commerce, CA 90040  
 (888) 772-7701  
 www.olympiafaucets.com

# INSTALLATION

**Tools:**



**Model Number: P-1230, P-1232, P-1250, P-3230, P-3250**

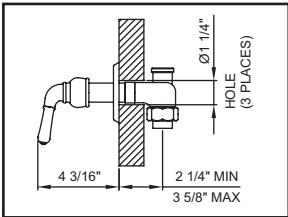
**Warnings and Notes:**

Check with local plumbing code requirements before installation.  
 This product should be installed by a local listed plumber.  
**Do not use plumbers putty on threads.**

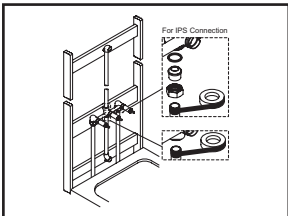


**Installation Steps:**

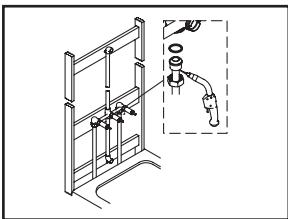
Two & Three Handle Tub / Shower Set



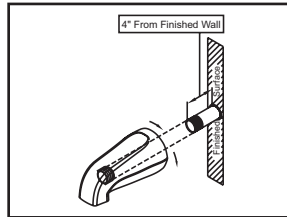
(1) Determine the location of the valve to be installed for new installation. For existing installation look at the installation drawing and ensure there is enough room to install the valve.



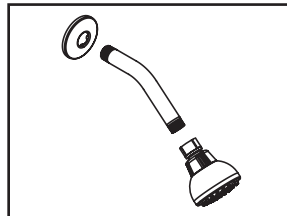
(2) Install the outlet connections. Apply Teflon tape at threaded connections. Install inlet connections. Hot water supply should be on the left hand side and cold water supply should be on the right hand side.



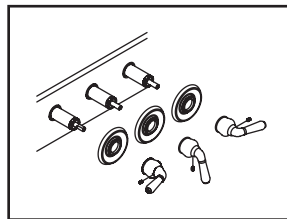
(3) For CXC installation: Remove washer from bottom of tailpiece union, slide tailpiece locknut on inlet copper pipe, solder inlet copper pipe into tailpiece union, replace washer back after tailpiece union cooled down. Tighten tailpiece locknut to rough-in valve with help of pipe wrench.



(4) The 1/2" pipe thread nipple must be kept with the length of 4" from finished wall. Apply Teflon tape at thread end, screw tub spout onto pipe thread nipple and tighten by strap wrench.



(5) Use silicon to caulk the back of shower arm flange. Slide shower arm flange on shower arm. Apply Teflon tape on both thread ends of shower arm, install shower arm to elbow and tighten with help of strap wrench. Press shower arm flange against finished wall. Turn on water to flush the system. Turn off water and attach showerhead to shower arm.

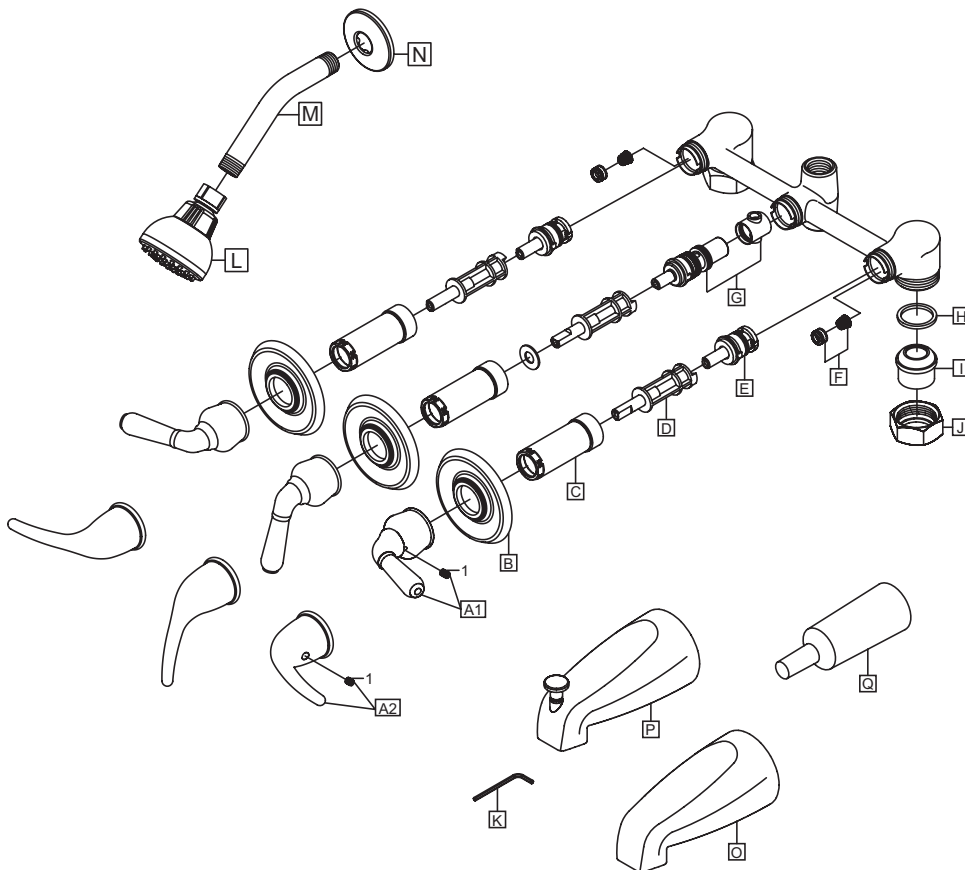


(6) Install valve escutcheon. Install handles to the valve with the help of 3/32" Allen wrench.

## Exploded Drawing:

\* Note: Please specify finish/color when ordering.

	ITEM #	DESCRIPTION
A1	OP-140009*	Lever Handle (For P-123X, P-3230)
A2	OP-190015C*	Lever Handle (For P-1250, P-3250)
B	OP-440037*	Escutcheon
C	OP-440036*	Sleeve
D	OP-440035	Stem Extension
E	OP-340006C, H	Cartridge-Cold,Hot
F	OP-490041	Springs & Seats
G	OP-340007	Diverter Stem Unit (For P-32X0)
H	OP-440050	Washer
I	OP-440015	Tailpiece Union
J	OP-440016	Tailpiece Locknut
K	OP-490011	3/32" Allen Wrench
L	OP-640053*	1.5 GPM Showerhead
M	OP-640002*	Shower Arm
N	OP-640001*	Shower Arm Flange
O	OP-640014*	1/2" IPS Tub Spout (For P-32X0)
P	OP-640015*	1/2" IPS Diverter Tub Spout (For P-12X0)
Q	OP-440017	Protective Cover
1	OP-490029	Allen Screw



**OLYMPIA**

For more care information or trouble shooting inquiries  
about your Olympia product, Please call:  
**OLYMPIA FAUCETS, INC.** (888) 772-7701  
Monday-Friday 8 AM to 8 PM EST (5 AM to 5 PM PST)  
[www.olympiafaucets.com](http://www.olympiafaucets.com)