



OLYMPIA FAUCETS, INC.
 3325 S. Garfield Ave.
 Commerce, CA 90040
 (888) 772-7701
 www.olympiafaucets.com

INSTALLATION

Tools:



Basin Wrench Adjustable Wrench Plumbers Putty Teflon Tape Rags

Model Number: L-6160H, L-6161H, L-6162H

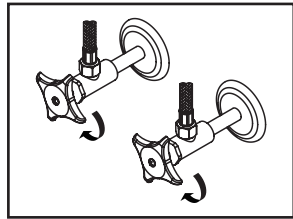


Warnings and Notes:

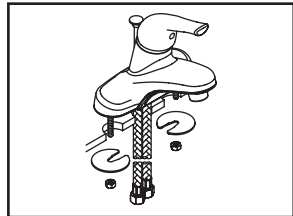
Check with local plumbing code requirements before installation.
 This product should be installed by a local listed plumber.
Do not use plumbers putty on threads.

Installation Steps:

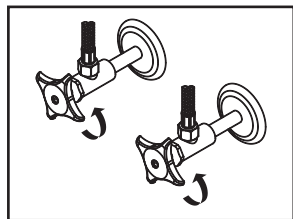
Single Handle Lavatory Faucet



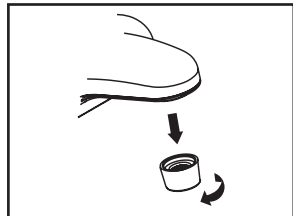
(1) Shut off water supplies. Remove old faucet. Clean mounting surface in preparation for new faucet.



(2) Thread mounting bolts to the bottom of faucet. Carefully lead both stainless steel flex inlet lines through center mounting holes, align faucet on the mounting surface. Slide mounting plate to the mounting bolts from underneath of the sink and thread mounting nut onto mounting bolts. Tighten mounting nut with help of basin wrench or adjustable wrench.

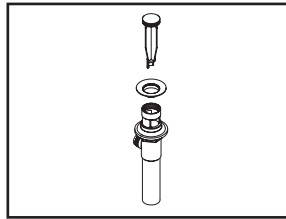


(3) Connect hot and cold inlet supply hoses to supply stops. For 1/2" connection; use 3/8" male to 1/2" female adapter for installation. Adapters are optional and not provided with faucet. Turn on both side supply stops.

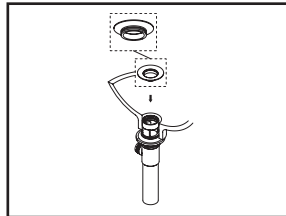


(4) Important: After installation is complete, turn on both supply stops, remove aerator and turn on handle, allow both hot and cold water to run at least one minute each. While water is running, check for leaks. Turn off handle and replace aerator.

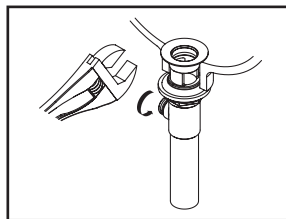
Pop-up Drain Installation:



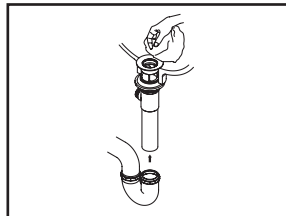
(1) Remove pop-up flange from body



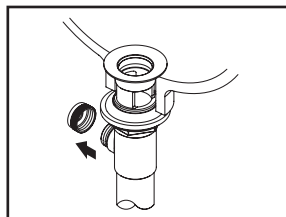
(2) Place a ring of plumbers putty on the bottom of flange.



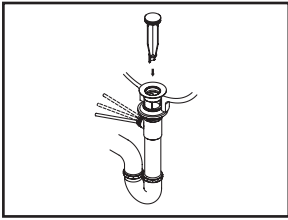
(3) Insert pop-up flange through drain hole and attach flange to body. Use Teflon tape to thread tail piece to Pop-up drain body. Ensure the pop-up outlet faces towards the back of the sink. Tighten the locknut securely with a wrench. Do not overtighten.



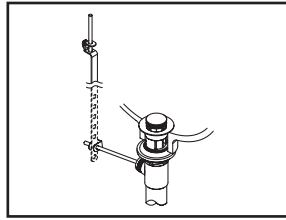
(4) Remove the excess plumbers putty. Connect the trap (check manufacturer's instructions for installation).



(5) Remove pivot rod nut from pop-up body, ensure the washers is in place, insert pivot rod, tighten pivot rod nut back to pop-up body.



(6) Push pivot rod down, insert drain plug carefully. Test to ensure drain plug works properly.

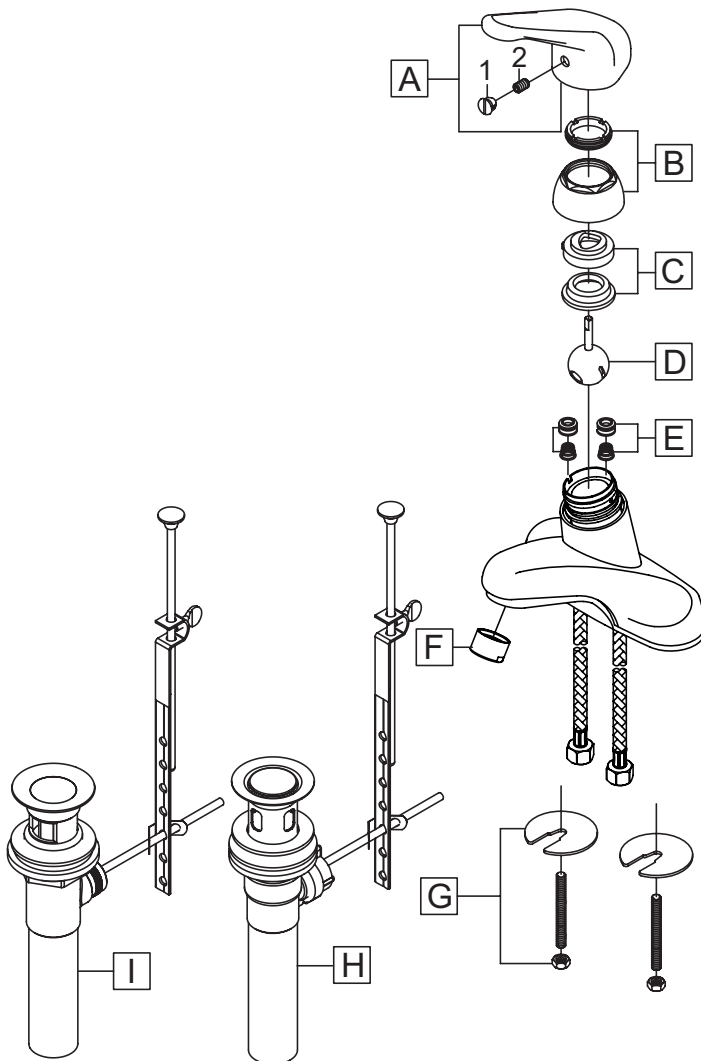


(7) Connect lift rod strap to pivot rod by using clip. Tighten the thumbscrew to connect lift rod strap to pop-up lift rod.

Exploded Drawing:

* Note: Please specify finish/color when ordering.

| | ITEM # | DESCRIPTION |
|---|------------|---|
| A | OP-190001* | Metal Lever Handle |
| B | OP-490003* | Cap & Adjusting Ring |
| C | OP-490004 | Cam & Washer |
| D | OP-390001 | Stainless Steel Ball |
| E | OP-490041 | Springs and Seats |
| F | OP-490064* | 1.2 GPM Aerator |
| G | OP-530001 | Mounting Kit |
| H | OP-630004* | 50/50 Pop-Up Drain Assembly (For L-6160H) |
| I | OP-630002* | Brass Pop-Up Drain Assembly (For L-6162H) |
| 1 | OP-490002 | Hot & Cold Indicator |
| 2 | OP-490043 | Allen Screw |



OLYMPIA

For more care information or trouble shooting inquiries about your Olympia product, Please call:
OLYMPIA FAUCETS, INC. (888) 772-7701
 Monday-Friday 8 AM to 8 PM EST (5 AM to 5 PM PST)
www.olympiafaucets.com