



**OLYMPIA FAUCETS, INC.**

Interchange City Distribution Center #20  
1277 Heil Quaker Boulevard  
La Vergne, TN 37086  
(888) 772-7701  
www.olympiafaucets.com

**Model Number: K-5120, K-5121, K-5130, K-5131  
K-5150, K-5160, K-5161, K-5170, K-5171**

**Tools:**



Adjustable Wrench



Plumbers Putty

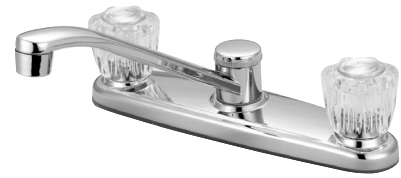


Teflon Tape



Rags

# INSTALLATION



**Warnings and Notes:**

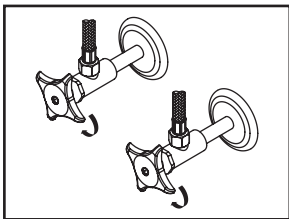
Check with local plumbing code requirements before installation.

This product should be installed by a local listed plumber.

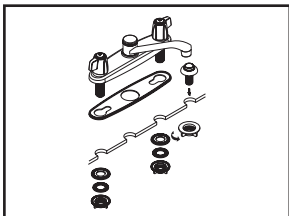
**Do not use plumbers putty on threads.**

## Installation Steps:

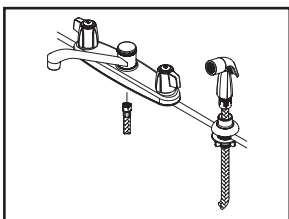
### Two Handle Kitchen Faucet



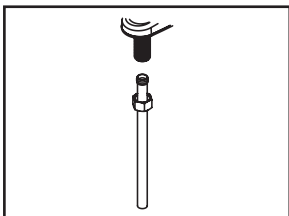
(1) Shut off water supplies. Remove old faucet. Clean mounting surface in preparation for new faucet.



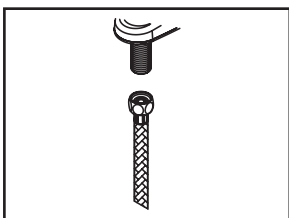
(2) Apply plumbers putty under the base gasket, with base gasket on the bottom of deck plate, place faucet in position on the sink. Slide washers on shanks and secure the locknut to the shanks from underneath of the sink. Place side spray holder in position on the sink, tighten locknut from underneath of the sink to secure side spray holder.



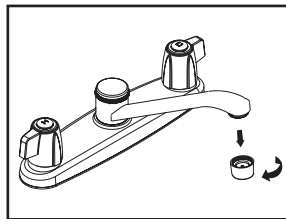
(3) Lead side spray hose through side spray holder. Tighten side spray hose to faucet body from underneath of the sink.



(4a) when using ball-nose flexible supplies to connect faucet to water supply valves, slip coupling nut onto flexible supply. Ball-nose coupling will go partially into shank. Tighten coupling nut (DO NOT OVERTIGHTEN). Install opposite end according to manufacturer's instruction for both tubes.



(4b) when using stainless steel braided faucet supply hose; this faucet requires one end of the supply hose to have a 1/2" female IPS connection. The other end of this supply hose must match the thread on the water supply valve under your sink. Once you've identified the required size, carefully follow the manufacturer's installation instructions for each hose.

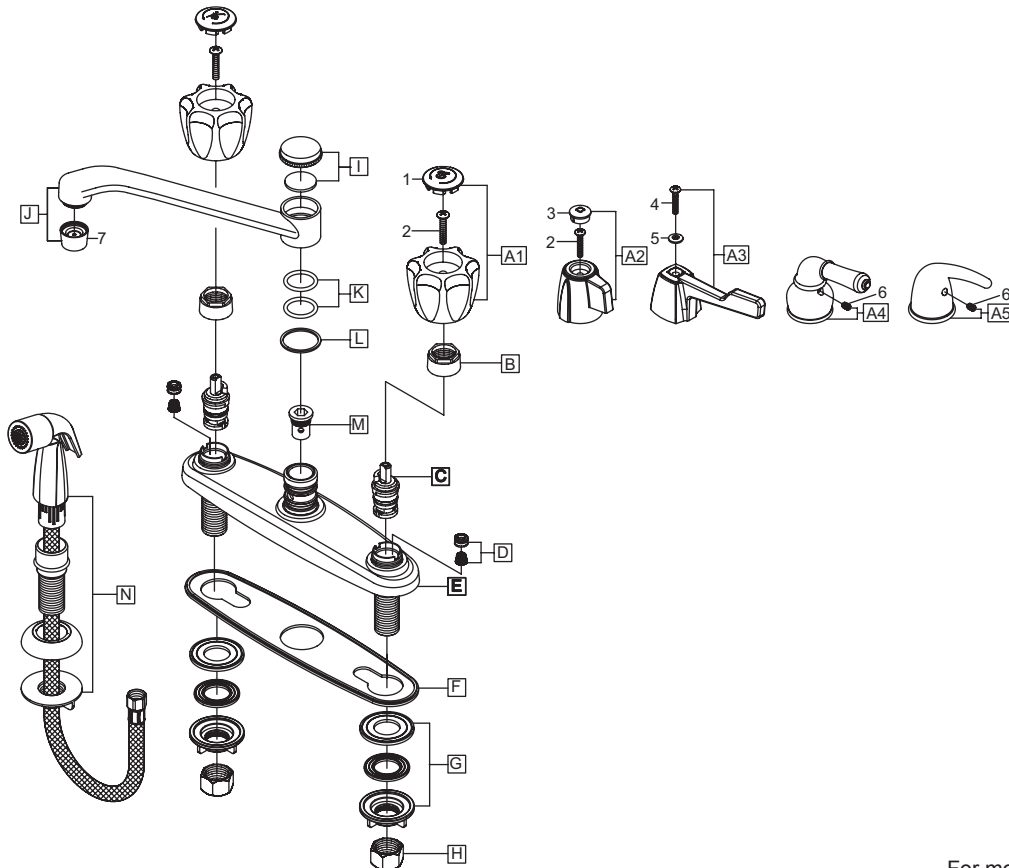


(5) Important: After installation is complete, remove aerator. Turn water supplies on and allow both hot and cold water to run at least one minute each. While water is running, check for leaks. Turn off water and replace aerator.

## Exploded Drawing:

	ITEM #	DESCRIPTION
1	OP-490012C,H	Acrylic Handle Button Cold, Hot
2	OP-490014	Screw
3	OP-490013C,H	Mini Blade Handle Button Cold, Hot
4	OP-490015	Handle Screw
5	OP-490016C,H	Wrist Blade Handle Button Cold, Hot
6	OP-490029	Allen Screw
7	OP-490035	1.5 GPM Aerator

	ITEM #	DESCRIPTION
A1	OP-190003C,H	Acrylic Handle Cold,Hot
A2	OP-190004C,H	Mini Blade Handle Cold, Hot
A3	OP-190005C,H	Wrist Blade Handle Cold, Hot
A4	OP-190010C,H	Lever Handle Cold, Hot
A5	OP-190015C,H	Lever Handle Cold, Hot
B	OP-490040	Bonnet Nut
C	OP-390004 OP-390005	Cartridges-Brass Post Cartridges-Plastic Post
D	OP-490041	Springs and Seats
E	OP-420025	Deck Plate
F	OP-420026	Base Gasket
G	OP-520009	Mounting Locknuts & Washers
H	OP-590001	Supply Nuts
I	OP-420018	Spout Cap & Washer
J	OP-220002	Spout
K	OP-420019	O-rings
L	OP-420020	Gasket
M	OP-420024	Diverter Piston
N	OP-420051	Side Spray Assembly



**OLYMPIA**

For more care information or trouble shooting inquiries about your Olympia product, Please call:

**OLYMPIA FAUCETS, INC.** (888) 772-7701

8AM - 8PM EST (5AM to 5PM PST)

[www.olympiafaucets.com](http://www.olympiafaucets.com)