

# TWIST AND LOCK LED SURFACE MOUNT FIXTURE



Thank you for purchasing our product. The device has been manufactured from components with advanced optoelectronics to ensure high reliability and long performance. Before assembling please read carefully this Operation Manual and save in a safe place for future reference. Please note that all electrical connections must be in accordance with local and National Electrical Code standards as well as local building code. In case you are not familiar with proper wiring connections and building codes consult a qualified electrician.

**SAFETY RECOMMENDATIONS**

1. RISK OF ELECTRIC SHOCK – THIS PRODUCT MUST BE INSTALLED IN ACCORDANCE WITH APPLICABLE INSTALLATION CODES BY A PERSON FAMILIAR WITH MENTIONED ABOVE CODES AND HAZARDS INVOLVED. DISCONNECT POWER AT CIRCUIT BREAKER OR FUSE BEFORE INSTALLING OR SERVICING.
2. Before use of the product read carefully the whole Operation Manual.
3. THE PRODUCT IS PURPOSED FOR INTERIOR USE ONLY, SUITABLE FOR DAMP LOCATIONS
4. Protect the product against direct contact with water.
5. Assemble the product only with the use of parts provided and the housing; improper assembly may result in device falling which could damage the product, personal property or cause injury.
6. Assembly shall follow with accessories delivered with the set only.
7. KEEP OUT OF REACH OF CHILDREN.

**DIMMING**

This product is compatible with most residential type dimmers available on the market. The dimming performance will depend on kind of dimmer and dimmer settings. Visit Satco.com for an up to date list of compatible dimmers.

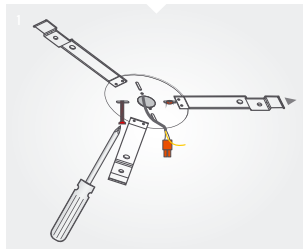
**CLEANING AND STORAGE**

- Clean with a soft or damp cloth. While cleaning with the damp cloth make sure the power is off.
- Do not clean with liquids or abrasives.
- Store at ambient temperature.

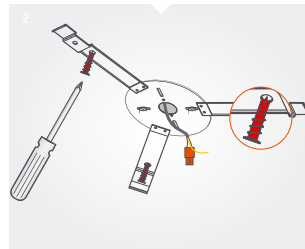
**FIVE YEAR LIMITED WARRANTY**

The purchased product is covered with Five year (60months) warranty in respect of any defect in material or workmanship after purchase date. SATCO shall bear no responsibility on account of warranty, as well as shall bear no liability for any faults, in case of improper operation, use, negligence, accident or exposure to natural hazard, or excessive use over the limits specified for the unit, or if any unauthorized alteration or repair followed.

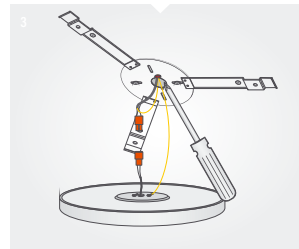
**INSTALLATION** ( Six simple steps. )



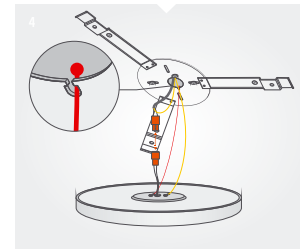
**Step 1**  
Attach the bracket to junction box using the 2 screws (provided). Pull the AC cables through the bracket center hole.



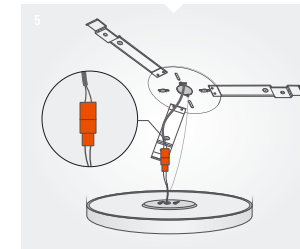
**Step 2**  
Mount 3 drywall plugs (provided) in ceiling through the bracket. (For installation on wooden surfaces use the smaller hole and the wood screw).



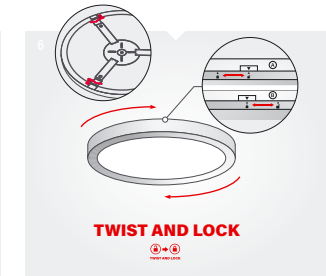
**Step 3**  
Use M4 screw to install ground from the grid (AC) and from fixture to the bracket.








**Step 4**  
Slide convenience wire into slot of bracket. Rest product on convenience wire while doing electrical installation. Do not disconnect convenience wire after installation.



**Step 5**  
Make wire connections between fixture and junction box connect wires to AC cables from junction box with wire nuts ( provided ): L side to Black AC wire, W side to White AC wire. Push and feed all wires up into junction box. Lift fixture up against bracket.



**Step 6**  
Place all 3 legs of bracket within walls on the back of fixture. ⓐ Align the arrow sign ▼ from bracket to unlock-sign 🔓 from fixture. ⓑ Turn clockwise to locked-sign 🔒 to lock fixture in place. Remove label.

Tools Required	Package Contents
 Philips Screwdriver	 8/32 US screw x2
	 Drywall plug x3
	 Self tnb screw x3 (wood screw)
	 M4 short screws x1

For installation on the wooden surfaces use the smaller hole and the wood screw.