



CONDENSING TANKLESS GAS WATER HEATER

ecoTOUGH™
Super Efficient. Reliable.



Part List

Models

NRCP1112-DV / NRCP982-DV (Eco TOUGH)

• Natural Gas(NG) / Liquid Propane Gas (LP)

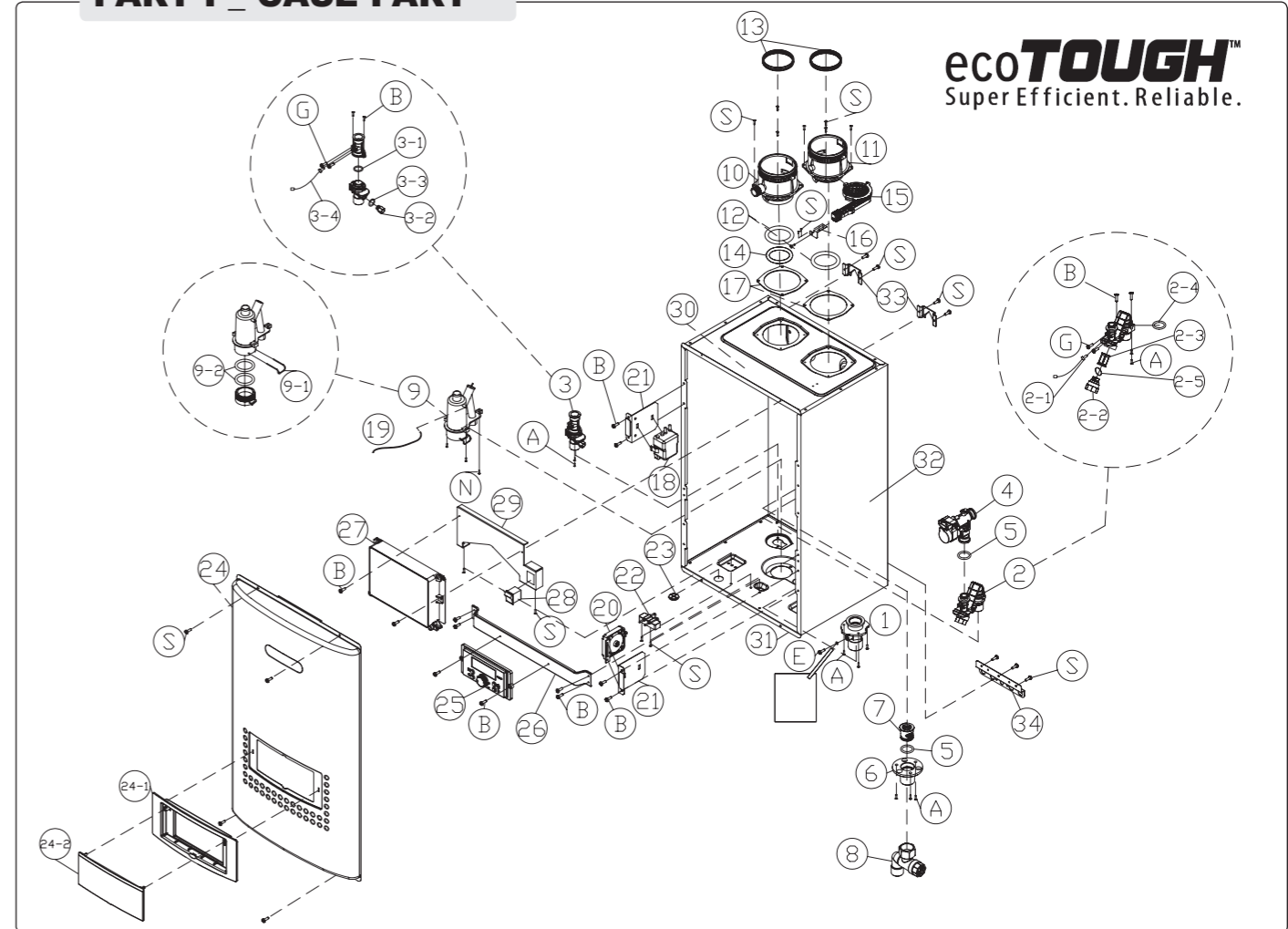


Low NOx Approved
by SCAQMD
14ng/J or 20ppm
(Natural Gas Only)



Part List

PART I _ CASE PART



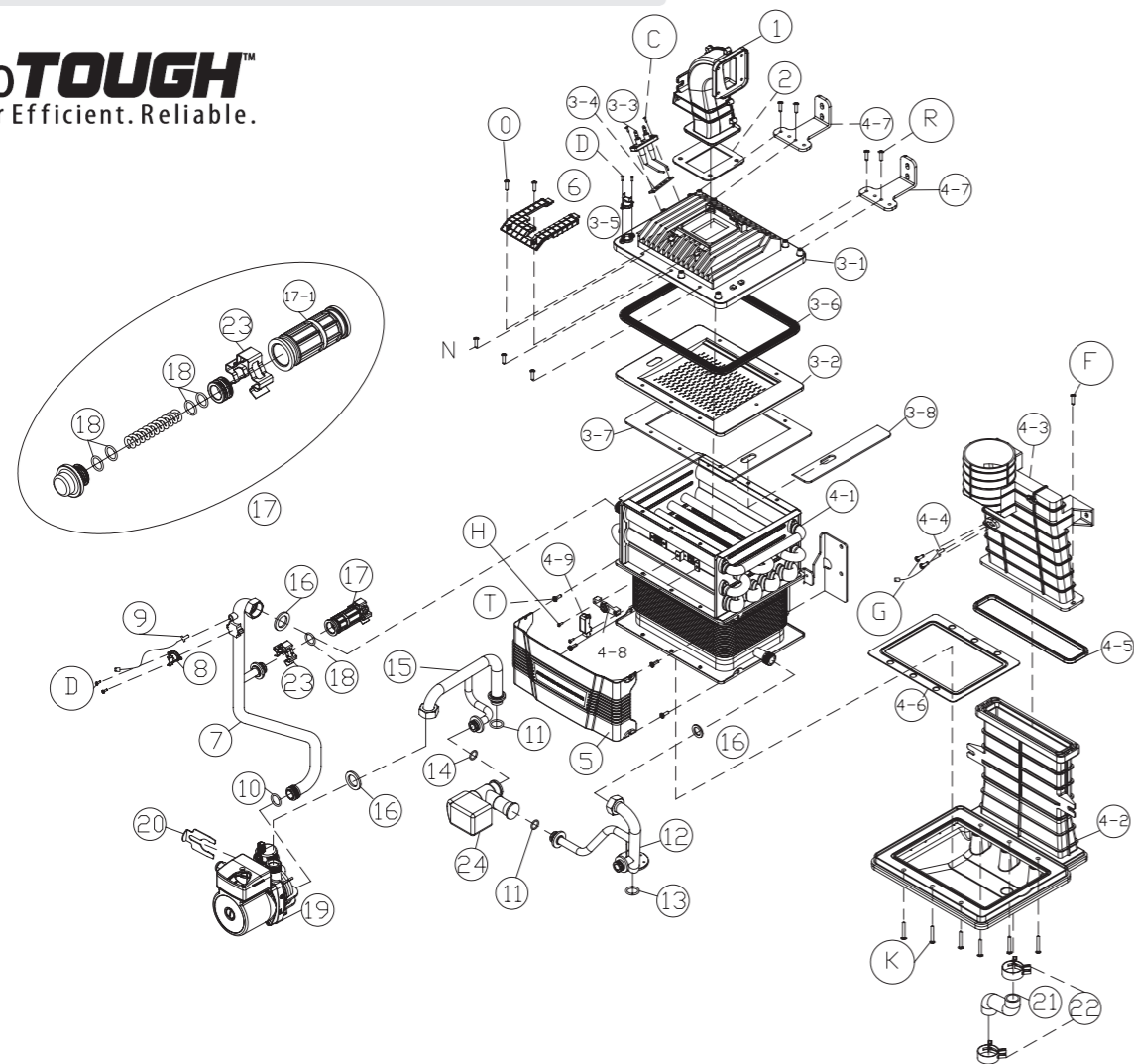
ecoTOUGH™
Super Efficient. Reliable.

Item	Description	Part Number	Qty	Item	Description	Part Number	Qty
1	Gas Inlet Connection	H870060043	1	14	O-ring (P75)	S552200069	1
2	Cold Water Valve Assembly	H160400003	1	15	Air Intake Filter	S549100159	1
2-1	Cold Water Temperature Sensor	S311300013	1	16	Air Intake Filter Bracket	H140030005	1
2-2	Cold Water Filter Cap	S549100122	1	17	Gasket	S555100029	2
2-3	Cold Water Filter	S549100123	1	18	Igniter	S223100028	1
2-4	O-ring (P20)	S551200031	1	19	Siphon Air Pressure Hose	S423100022	1
2-5	O-ring (P18)	S551200029	1	20	Air Pressure Switch	S264100022	1
3	Hot Water Pipe Assembly	H160420004	1	21	Bracket (Igniter, Air Pressure Switch)	H140200033	2
3-1	O-ring (P20)	S551200031	1	22	Water Leak Detector	S319300016	1
3-2	Hot water Connection	S492100053	1	23	Wiring Through Way Packing	S551100053	1
3-3	O-ring (P10)	S551200038	1	24	Front Cover Assembly	H110130113	1
3-4	Hot Water Temperature Sensor	S311300015	1	24-1	Control Panel Bracket	H850150051	1
4	Flow Control Valve	S323100091	1	24-2	Control Panel	H850150050	1
5	O-ring (P16)	S551200028	2	25	Control Panel Window	S121100144	1
6	Recirculation Return Connection	S492100052	1	26	Control Panel Bracket	H140350003	1
7	Check Valve	S515100022	1	27	PCB -(Control Board)	S114100160	1
8	Recirculation Return Filter Assembly	H120380003	1	28	Rocker Switch	S264100048	1
9	Condensate Trap	H160520003	1	29	Control Board Bracket	H140210024	1
9-1	Condensate Clip	S491100089	1	30	Case (Top)	H110180222	1
9-2	O-ring (P44)	S552200068	2	31	Case (Bottom)	H110140150	1
10	Exhaust Assembly	H120490008	1	32	Case	H110240320	1
11	Air Intake Assembly	H110010006	1	33	Case Bracket	H140120020	2
12	O-ring (P85)	S552200070	2	34	Case Bracket (Bottom)	H140120014	1
13	Exhaust and Intake Packing	S552100064	2	35	Connector Assembly	H160550012	1
				36	Power Cord	S261110005	1

Part List

PART II _ HEAT EXCHANGER PART

ecoTOUGH™
Super Efficient. Reliable.



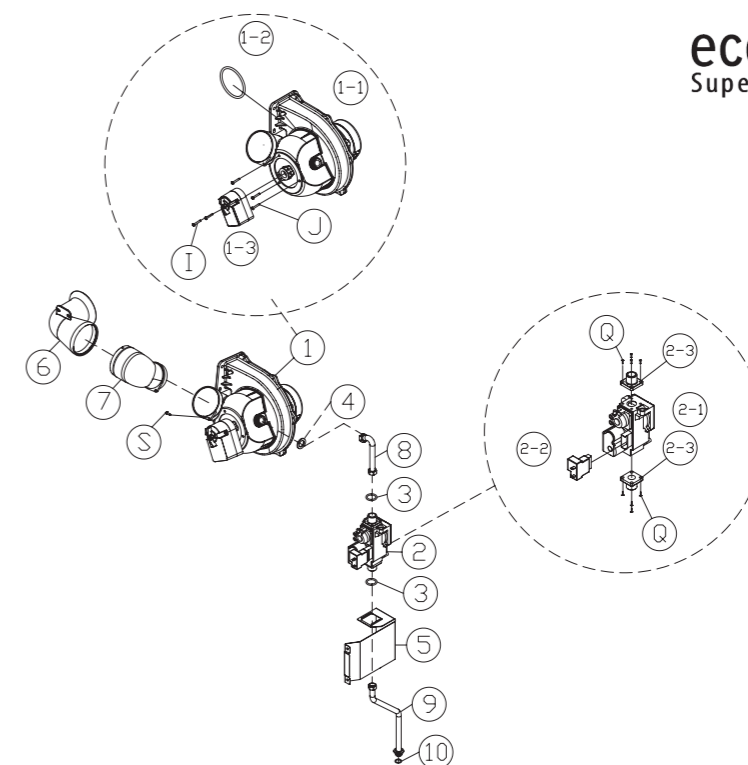
Item	Description	Part Number	Qty
1	Blower Connector	H870060060	1
2	Blower Connector Packing	S551100033	1
3	Burner Assembly	H130120185	1
3-1	Burner Head	S349100022	1
3-2	Burner Flange	H130120197	1
3-3	Ignition Rod	S333100032	1
3-4	Ignition Rod Bracket	S554100043	1
3-5	Overheat Switch (Burner)	S311400012	1
3-6	Burner Head Packing	S551100034	1
3-7	Burner Head Gasket 1	S554100042	1
3-8	Burner Head Gasket 2	S554100063	1
4	Heat Exchanger Assembly	H120240464	1
4-1	Heat Exchanger Semi Assembly	H120260061	1
4-2	Exhaust Pipe Assembly (Lower)	S549100152	1
4-3	Exhaust Pipe Assembly (Upper)	S549100151	1
4-4	Exhaust Temperature Sensor	S319300012	1
4-5	Exhaust Duct Packing	S552100062	1
4-6	Secondary Heat Exchanger Packing	S551100051	1
4-7	Heat Exchanger Brackets (Left & Right)	H140320015	2
4-8	Flame Detector Sensor Bracket	H850130001	1
4-9	Flame Detector Sensor	S314200007	1

Item	Description	Part Number	Qty
5	Secondary Heat Exchanger Cover	H850030013	1
6	Burner Fixing Bracket	H870060044	1
7	Hot Water Outlet Pipe	S412160032	1
8	Overheat Switch	S311400002	1
9	Water Temperature Sensor	S311300014	1
10	O-ring (P18)	S551200029	1
11	O-ring (P16)	S551200028	2
12	Hot Water Supply and Return Pipe	S412150049	1
13	O-ring (P20)	S551200031	1
14	O-ring (P15)	S551200027	1
15	Pump Outlet Pipe	S519100041	1
16	Packing (20A)	S551100004	3
17	Water Chamber Assembly	H160290005	1
17-1	Water Chamber Body	S549100154	1
18	O-ring (P16)	S551200028	5
19	Circulation Pump	S132100066	1
20	Pump Clip	S491100100	1
21	Condensate Hose	S421200031	1
22	Condensate Hose Clip	S455100005	2
23	Water Hammer Clip	S491100099	2
24	Mixing Valve	S323100092	1

Part List

PART III _ FAN MOTOR PART

ecoTOUGH™
Super Efficient. Reliable.



Item	Description	Part Number	Qty
1	Fan & AGM Assembly	H160510021	1
1-1	Fan	S242100043	1
1-2	O-ring	S551200026	1
1-3	AGM (Actuator)	S329100019	1
2	Gas Valve Assembly	H160310018	1
2-1	Gas Valve	S171100013	1
2-2	Gas Valve Plug	S171200001	1
2-3	Gas Valve Adapter (Straight)	S345100008	2
3	15A Packing	S551100003	2
4	Gas Mixer Packing	S551100040	1

Item	Description	Part Number	Qty
5	Gas Valve Bracket	H140010009	1
6	Silencer Body	H850150064	1
7	Silencer Elbow	H850150044	1
8	Gas Pipe (Upper)	S412190043	1
9	Gas Pipe (Lower)	S412190044	1
10	O-ring (p18)	S551200029	1

Screw

Item	Description	Length
A	Machine Screw	M4 x 8
B	Tapping Screw	M4 x 10
C	Round head self Tapping Screw	M4 x 6
D	Round head self Tapping Screw	M3 x 8
E	Machine Screw	M4 x 8
F	Tapping Screw	M4 x 16
G	Tapping Screw	M4 x 6
H	Round Head Self Tapping Screw	M4 x 16
I	Round Head Self Tapping Screw	M4 x 30
J	Machine Screw	M4 x 25

Item	Description	Length
K	Machine Screw	M5 x 30
L	Tapping Screw	M4 x 6
M	Machine Screw	M5 x 20
N	Machine Screw	M5 x 16
O	Machine Screw	M5 x 12
P	Round Head Machine Screw	M3 x 6
Q	Round Head Machine Screw	M4 x 12
R	Machine screw	M4 x 8
S	Round Head Self Tapping Screw	M4 x 10
T	Round Washer Head Self Tapping Screw	M6 x 6



NORITZ AMERICA CO. 11160 Grace Avenue Fountain Valley, CA 92708
Phone : 866 - 766 - 7489