

NM4-RDC

4" M4 Round LED Recessed Downlight

Source: 15W LED
1100lm

PRODUCT DESCRIPTION

4" M4 Round LED downlight are ideal for remodel or new constructions in residential and light commercial applications. IC Air-Tight rated luminaires require no housing, making installation easy.

FEATURES

- No housing required - IC Air-Tight rated
- Easy installation for remodel or new construction applications
- Square trim available for an alternative appearance
- Quick disconnect allows for extended lengths
- 2700K or 3000K @ 90+ CRI
- Triac or ELV dimming
- 5-year limited warranty
- ENERGY STAR certified
- cETLus Listed for Wet Locations

SPECIFICATION

Construction: Die-cast aluminum trims available in matte black or matte powder white finish. Optional field changeable square trim is available.

Air Flow Restriction: Luminaire has factory installed gasket to restrict airflow from room into ceiling plenum to <2CFM (cubic feet per minute) in accordance with ASTM-283 Air-Tight requirements.

Clearance: IC rated luminaires are rated for direct contact with insulation (not spray foam insulation), no minimum clearance is required.

Junction Box: Prewired junction box includes quick connect to LED fixtures for ease of installation. Junction box includes four 1/2" trade size knockouts and snap on cover with 7" quick connect wire. Luminaire includes 6 1/2" quick connect wire.

Mounting: No housing is required, two tensions steel spring clips secure luminaire to ceiling. Accommodates ceiling thickness up to 3/4". New construction frame-in available, see mounting accessories.

ELECTRICAL

Input Voltage: 120V
Lumens / Wattage: 1100lm / 15W
Color Temperature: 2700K or 3000K
Color Rendering Index: 90+ CRI
Beam Spread: 37° Narrow Flood
Operating Temp.: 0°C to 25°C ambient temperature
Lifetime: 60,000 hours @ L70
Dimming: Dimmable down to 10% with Triac or ELV
[Click Here](#) or check complete dimmer list at www.NoraLighting.com in the "Compatibility" page under "Resources" tab

OPTIONAL TRIM ACCESSORIES

NM4-SDT: Square Baffle Trim for NM4-RDC, Black or White

OPTIONAL MOUNTING ACCESSORIES

NF-R375: New Construction Frame-In
NM2-EW-4: 4' Quick Connect Linkable Extension Cable
NM2-EW-10: 10' Quick Connect Linkable Extension Cable

LABELS AND LISTINGS

- cETLus Listed for Wet Locations
- ENERGY STAR certified
- [5-Year Limited Warranty](#)
- FCC compliant
- Certified to the high efficacy requirements of California Title 24 JA8-2019



Type _____

Project _____

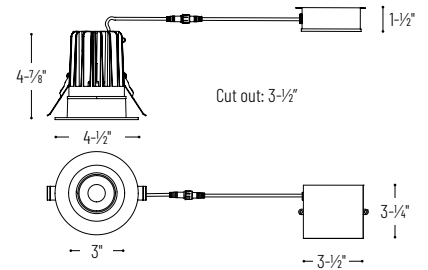
Catalog No. _____

Notes _____

Performance Data

Part Number	Lumens	CCT
NM4-RDC27BB	1027lm	2700K
NM4-RDC27MPW	1086lm	2700K
NM4-RDC30BB	1086lm	3000K
NM4-RDC30MPW	1177lm	3000K

PRODUCT IMAGES AND DIMENSIONS



NM4-SDT
Square Baffle Trim

4" M4 Round LED Recessed Downlight

Trim Type	Color Temperature / CRI	Finish
NM4-RDC = 4" Round Downlight	27 = 2700K / 90 CRI	BB = Matte Black
	30 = 3000K / 90 CRI	MPW = Matte Powder White

NM4-RDC Trim Accessories

Accessory Type	Finish
NM4-SDT = Square Baffle Trim	B = Matte Black
	MPW = Matte Powder White

Optional Mounting Accessories

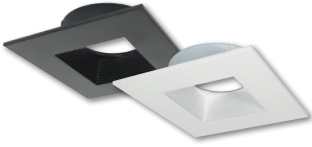
Accessory Type
NF-R375 = New Construction Frame-In Plate
NM2-EW-4 = 4' Quick Connect Extension Cable
NM2-EW-10 = 10' Quick Connect Extension Cable

Example: **NM4-RDC30MPW** = 4" M4 Round LED Recessed Downlight, 1100lm / 15W, 3000K / 90 CRI, Matte Powder White

NM4-RDC

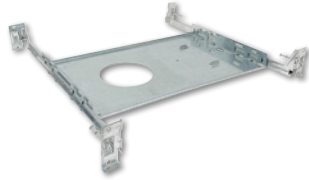
4" M4 Round LED Recessed Downlight Accessories

Type	_____
Project	_____
Catalog No.	_____
Notes	_____



Square Trim for NM4-RDC

NM4-SDTB Matte Black
NM4-SDTMPW Matte Powder White
Converts the round trim included with NM4-RDC downlight into a square trim



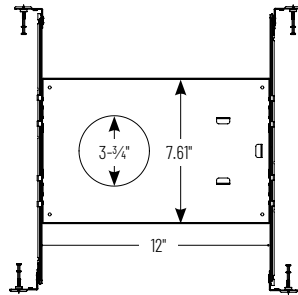
New Construction Frame-In

NF-R375
For new construction pre-wiring and easier layout planning.



Quick Connect Extension Linkable Cables

NM2-EW-4 4' Cable
NM2-EW-10 10' Cable
Use to extend the length between luminaire and driver enclosure. Can be connected together to create custom lengths. Maximum length between luminaire and driver is 40'.



PHOTOMETRICS

NM4-RDC

4" M4 Round LED Recessed Downlight

Type

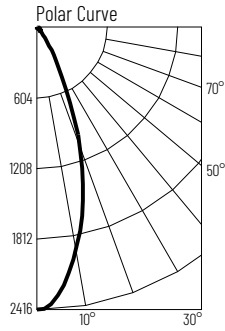
Project

Catalog No.

Notes

Test Information

Test Number: NTR1853R1
 Part Number: NM4-RDC27MPW
 Beam Spread: 36° Narrow Flood
 Lumens: 1086lm
 Wattage: 14.33W
 Efficacy: 76lpw
 CCT / CRI: 2700K / 90 CRI
 Spacing Criteria (0°-180°): 0.60
 Spacing Criteria (90°-270°): 0.58



Illuminance at a Distance

Distance from Luminaire	FC at Nadir	Beam Diameter
4'	151fc	2'-7"
6'	67.1fc	3'-11"
8'	37.8fc	5'-2"
10'	24.2fc	6'-6"
12'	16.8fc	7'-10"

Zonal Lumen Summary

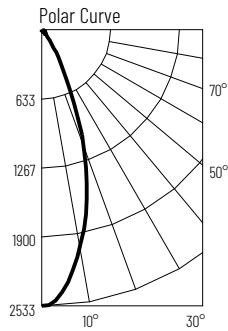
Zone	Lumens	% Luminaire
0-30	884	81.4
0-40	988	90.9
0-60	1061	97.7
0-90	1086	100
90-180	0	0
0-180	1086	100

Candela Table

Vertical Angles	Candela
0	2416
5	2227
15	1481
25	596
35	163
45	48

Test Information

Test Number: NTR1855R1
 Part Number: NM4-RDC30MPW
 Beam Spread: 37° Narrow Flood
 Lumens: 1177lm
 Wattage: 14.41W
 Efficacy: 82lpw
 CCT / CRI: 3000K / 90 CRI
 Spacing Criteria (0°-180°): 0.62
 Spacing Criteria (90°-270°): 0.6



Illuminance at a Distance

Distance from Luminaire	FC at Nadir	Beam Diameter
4'	158fc	2'-8"
6'	70.4fc	4'
8'	39.6fc	5'-5"
10'	25.3fc	6'-8"
12'	17.6fc	8'-1"

Zonal Lumen Summary

Zone	Lumens	% Luminaire
0-30	954	81
0-40	1068	90.8
0-60	1149	97.6
0-90	1177	100
90-180	0	0
0-180	1177	100

Candela Table

Vertical Angles	Candela
0	2533
5	2386
15	1610
25	660
35	187
45	52

Finish Multiplier

Finish: Black (x0.93), Matte Powder White (x1.0)