

NM2-2SDC

2" M2 Square LED Recessed Downlight

Source: 8W or 10W LED
600lm or 850lm

Type

Project

Catalog No.

Notes

PRODUCT DESCRIPTION

M2 downlight series features quality and convenience with easy installation for insulated or non-insulated applications.

FEATURES

- No housing required - IC Air-Tight rated
- Easy installation for remodel or new construction applications
- Quick disconnect allows for extended lengths
- 600lm or 850lm LED packages
- 2700K or 3000K @ 90+ CRI
- Triac or ELV dimming
- 5-year limited warranty
- ENERGY STAR certified
- cETLus Listed for Wet Locations

SPECIFICATION

Construction: Die-cast aluminum trims available in matte black or matte powder white finish.

Air Flow Restriction: Luminaire has factory installed gasket to restrict airflow from room into ceiling plenum to <2CFM (cubic feet per minute) in accordance with ASTM-283 Air-Tight requirements.

Clearance: IC rated luminaires are rated for direct contact with insulation (not spray foam insulation), no minimum clearance is required.

Junction Box: Prewired junction box includes quick connect to LED fixtures for ease of installation. Junction box includes two (600lm) or four (850lm) 1/2" trade size knockouts and snap on cover with 7" quick connect wire. Luminaire includes 5" (600lm) or 4" (850lm) quick connect wire.

Mounting: No housing is required, two tensions steel spring clips secure luminaire to ceiling. Accommodates ceiling thickness up to 3/4". New construction frame-in kit is available, see accessories.

ELECTRICAL

Input Voltage: 120V

Lumens / Wattage: 60 = 600lm / 8W; 85 = 850lm / 10W

Color Temperature: 2700K or 3000K

CRI: 90+CRI

Beam Spread: 36° Flood

Operating Temp.: 60 = 0°C to 40°C ambient temperature; 85 = 0°C to 25°C ambient temperature

Lifetime: 60,000 hours @ L70

Dimming: Dimmable down to 10% with Triac or ELV

[Click Here](#) or check complete dimmer list at www.NoraLighting.com in the "Compatibility" page under "Resources" tab

OPTIONAL MOUNTING ACCESSORIES

NM2-2R-F: New Construction Frame-In Plate

NM2-EW-4: 4' Quick Connect Linkable Extension Cable

NM2-EW-10: 10' Quick Connect Linkable Extension Cable

LABELS AND LISTINGS

- cETLus Listed for Wet Locations
- ENERGY STAR certified
- [5-Year Limited Warranty](#)
- FCC compliant
- Certified to the high efficacy requirements of California Title 24 JA8-2019

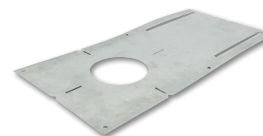
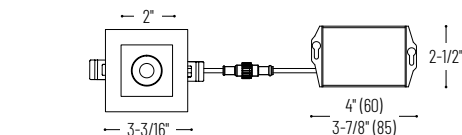
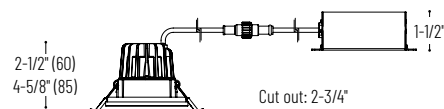


PRODUCT IMAGES AND DIMENSIONS



NM2-2SDC60XXMPW
600lm
Matte Powder White

NM2-2SDC85XXBB
850lm
Matte Black



NM2-2R-F
New Construction Frame-In Plate



NM2-EW-4 / NM2-EW-10
Quick Connect Extension Cable

2" M2 Square LED Recessed Downlight

Trim Type	Lumens / Wattage	Color Temperature / CRI	Finish
NM2-2SDC = 2" Square Downlight	60 = 600lm / 8W	27 = 2700K / 90 CRI	BB = Matte Black
	85 = 850lm / 10W	30 = 3000K / 90 CRI	MPW = Matte Powder White

Optional Mounting Accessories

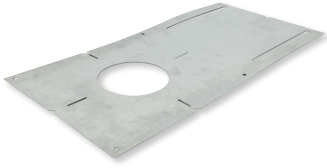
Description
NM2-2R-F = New Construction Frame-In Plate
NM2-EW-4 = 4' Quick Connect Extension Cable
NM2-EW-10 = 10' Quick Connect Extension Cable

Example: **NM2-2SDC6030MPW** = 2" M2 Square LED Recessed Downlight, 600lm / 8W, 3000K / 90 CRI, Matte Powder White

NM2-2SDC

2" M2 Square LED Recessed Downlight Accessories

Type	_____
Project	_____
Catalog No.	_____
Notes	_____



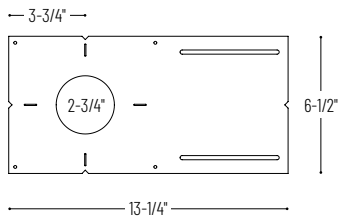
New Construction Frame-In Plate



Quick Connect Extension Linkable Cables

NM2-2R-F

For new construction pre-wiring and easier layout planning.



NM2-EW-4

4' Cable

NM2-EW-10

10' Cable

Use to extend the length between luminaire and driver enclosure. Can be connected together to create custom lengths. Maximum length between luminaire and driver is 40'.

PHOTOMETRICS

2" M2 Square LED Recessed Downlight

Type

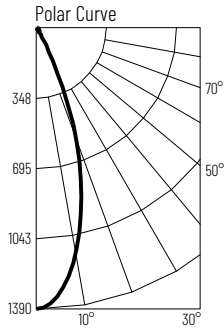
Project

Catalog No.

Notes

Test Information

Test Number: NTR1198
 Part Number: NM2-2SDC6027MPW
 Beam Spread: 36° Flood
 Lumens: 612lm
 Wattage: 8.26W
 Efficacy: 74lpw
 CCT / CRI: 2700K / 90 CRI
 Spacing Criteria (0°-180): 0.6
 Spacing Criteria (90°-270): 0.6



Illuminance at a Distance

Distance from Luminaire	FC at Nadir	Beam Diameter
2'	346fc	1'-4"
4'	86.4fc	2'-7"
6'	38.4fc	3'-11"
8'	21.6fc	5'-2"
10'	13.8fc	6'-7"

Zonal Lumen Summary

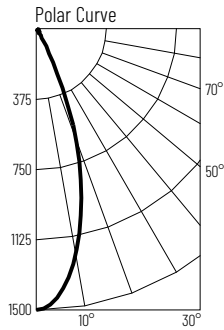
Zone	Lumens	% Luminaire
0-30	513	83.8
0-40	556	90.9
0-60	592	96.9
0-90	610	99.8
90-180	1	0.2
0-180	612	100

Candela Table

Vertical Angles	Candela
0	1383
5	1319
15	868
25	316
35	52
45	24

Test Information

Test Number: NTR1202
 Part Number: NM2-2SDC6030MPW
 Beam Spread: 36° Flood
 Lumens: 629lm
 Wattage: 8.08W
 Efficacy: 78lpw
 CCT / CRI: 3000K / 90 CRI
 Spacing Criteria (0°-180): 0.6
 Spacing Criteria (90°-270): 0.6



Illuminance at a Distance

Distance from Luminaire	FC at Nadir	Beam Diameter
2'	375fc	1'-4"
4'	93.7fc	2'-7"
6'	41.7fc	3'-11"
8'	23.4fc	5'-2"
10'	15fc	6'-6"

Zonal Lumen Summary

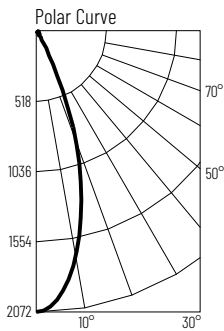
Zone	Lumens	% Luminaire
0-30	537	85.4
0-40	575	91.4
0-60	609	96.9
0-90	626	99.5
90-180	3	0.5
0-180	629	100

Candela Table

Vertical Angles	Candela
0	1500
5	1423
15	934
25	293
35	42
45	22

Test Information

Test Number: NTR1500
 Part Number: NM2-2SDC8530MPW
 Beam Spread: 36° Flood
 Lumens: 869lm
 Wattage: 10.18W
 Efficacy: 85lpw
 CCT / CRI: 3000K / 90 CRI
 Spacing Criteria (0°-180): 0.6
 Spacing Criteria (90°-270): 0.6



Illuminance at a Distance

Distance from Luminaire	FC at Nadir	Beam Diameter
2'	518fc	1'-4"
4'	130fc	2'-7"
6'	57.6fc	3'-11"
8'	32.4fc	5'-2"
10'	20.7fc	6'-6"

Zonal Lumen Summary

Zone	Lumens	% Luminaire
0-30	748	86.1
0-40	799	92
0-60	844	97.2
0-90	867	99.8
90-180	2	0.2
0-180	869	100

Candela Table

Vertical Angles	Candela
0	2072
5	1968
15	1286
25	429
35	56
45	29